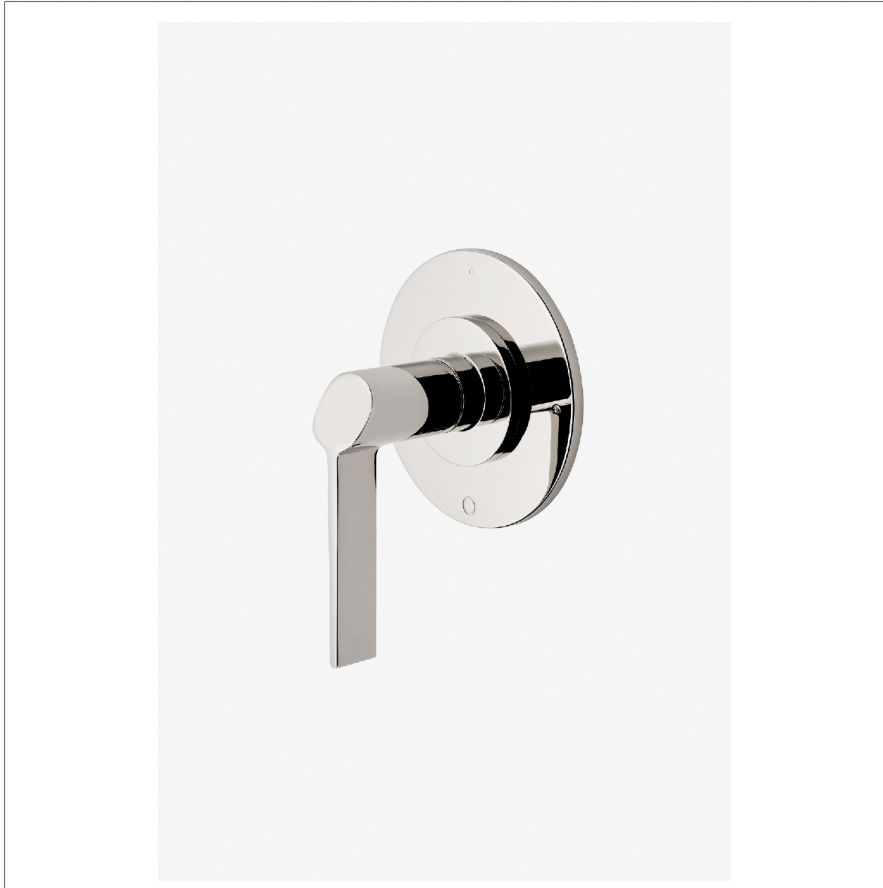


FINOT

NO3T60

Finot Three Way Diverter Valve Trim for Thermostatic with Modern Dots and Slope Lever Handle



SHOWN IN FINOT THREE WAY DIVERTER VALVE TRIM FOR THERMOSTATIC WITH MODERN DOTS AND SLOPE LEVER HANDLE | NO3T60

INSPIRATION

Finot seamlessly blends meticulous details with contemporary sensibility. A true integration of design and engineering expertise, this collection is comprised of parts that are decisively cast and forged to achieve painstaking precision and refinement.

PRODUCT FEATURES

Slope Lever Handle

For Use With a Thermostatic Shower System and Three Waterway Outlets

Features Modern Dots Representing Outlet Position

Stocked in Chrome, Nickel, Brass and Dark Nickel

Requires valve rough sold separately

TECHNICAL DETAILS

ADA Compliance: Yes
Fittings Hole Diameter: 2"
Handle Turn Angle: Quarter Turn
Integrated Diverter: N
Number Of Holes: One Hole
Primary Material: Brass

CODES & STANDARDS

NO3T60X, ASME A112.18.1/CSA B125.1

CERTIFICATIONS

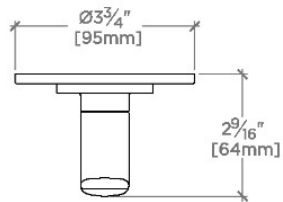


PRODUCT (NOTES)

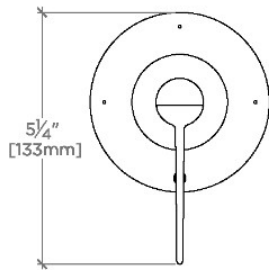
FINOT

NO3T60

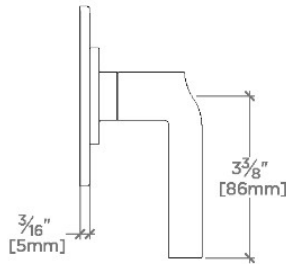
Finot Three Way Diverter Valve Trim for Thermostatic with Modern Dots and Slope Lever Handle



TOP VIEW SCALE: 3"=1'-0"



FRONT VIEW SCALE: 3"=1'-0"



SIDE VIEW SCALE: 3"=1'-0"