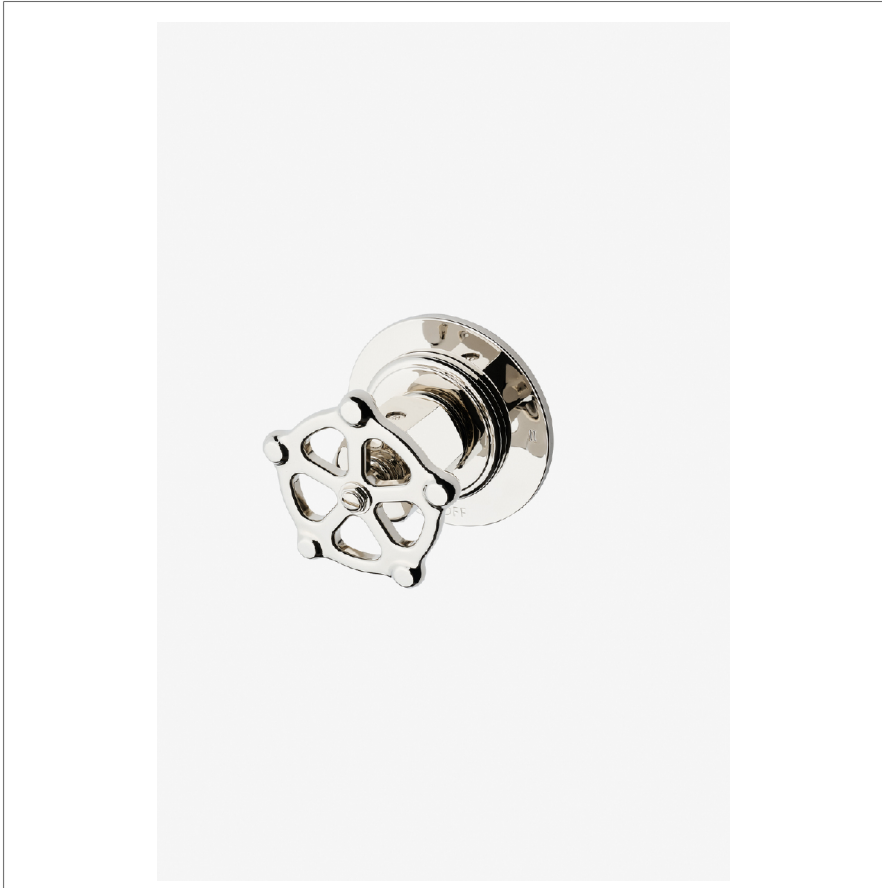


REGULATOR

RG2T02

Regulator Two Way Diverter Valve Trim for Thermostatic with Roman Numerals and Wheel Handle



SHOWN IN REGULATOR TWO WAY DIVERTER VALVE TRIM FOR THERMOSTATIC WITH ROMAN NUMERALS AND WHEEL HANDLE | RG2T02

TECHNICAL DETAILS

ADA Compliance: No
Depth/Width: 3 3/16"
Escutcheon Primary Material: Brass
Fittings Hole Diameter: 2 1/2"
Handle Turn Angle: Quarter Turn Each Way
Height: 3 3/4"
Length: 3 3/4"
Primary Material: Brass
Suggested Application: Bath
Water Pressure Maximum: 85.0 psi
Water Pressure Minimum: 20.0 psi
Water Pressure Recommended: 45.0 psi

INSPIRATION

A play on industrial controls from the early 1900s, when pride was lavished on parts. Translated to handcrafted, fittings project rugged beauty through powerful, detailed shapes.

CODES & STANDARDS

ASME A112.18.1/CSA B125.1, State of MA

PRODUCT FEATURES

Wheel Handle

For Use With a Thermostatic Shower System and Two Waterway Outlets

Features Roman Numerals Representing Outlet Position

Stocked in Nickel and Brass

Requires Rough Valve, Sold Separately: GUDV2T (US), GU2TDV (UK)

CERTIFICATIONS

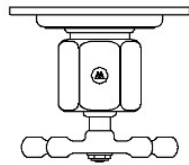


PRODUCT (NOTES)

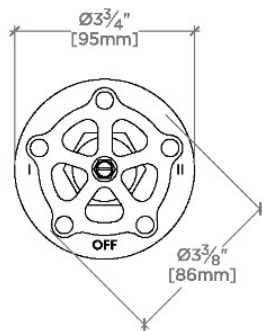
REGULATOR

RG2T02

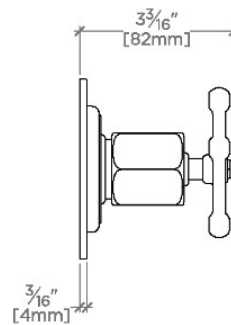
Regulator Two Way Diverter Valve Trim for Thermostatic with Roman Numerals and Wheel Handle



TOP VIEW SCALE: 3"=1'-0"



FRONT VIEW SCALE: 3"=1'-0"



SIDE VIEW SCALE: 3"=1'-0"