

## FINOT

## NO3T20

Finot Three Way Diverter Valve Trim for Thermostatic with Modern Dots and Lever Handle



SHOWN IN FINOT THREE WAY DIVERTER VALVE TRIM FOR THERMOSTATIC WITH MODERN DOTS AND LEVER HANDLE | NO3T20

### TECHNICAL DETAILS

ADA Compliance: Yes  
Fittings Hole Diameter: 2"  
Handle Turn Angle: Quarter Turn  
Integrated Diverter: N  
Number Of Holes: One Hole  
Primary Material: Brass

### INSPIRATION

Finot seamlessly blends meticulous details with contemporary sensibility. A true integration of design and engineering expertise, this collection is comprised of parts that are decisively cast and forged to achieve painstaking precision and refinement.

### CODES & STANDARDS

NO3T20X, ASME A112.18.1/CSA B125.1

### PRODUCT FEATURES

Lever Handle

For Use With a Thermostatic Shower System and Three Waterway Outlets

Features Modern Dots Representing Outlet Position

Stocked in Chrome, Nickel, Brass and Dark Nickel

Requires valve rough sold separately

### CERTIFICATIONS

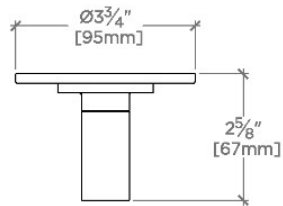


### PRODUCT (NOTES)

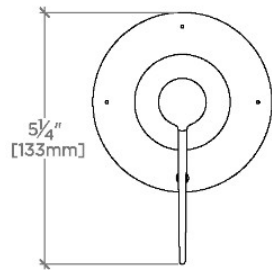
## FINOT

NO3T20

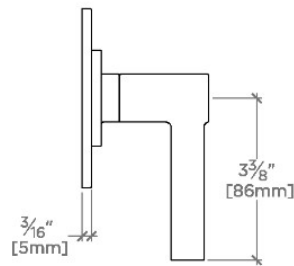
Finot Three Way Diverter Valve Trim for Thermostatic with Modern Dots and Lever Handle



TOP VIEW SCALE: 3"=1'-0"



FRONT VIEW SCALE: 3"=1'-0"



SIDE VIEW SCALE: 3"=1'-0"