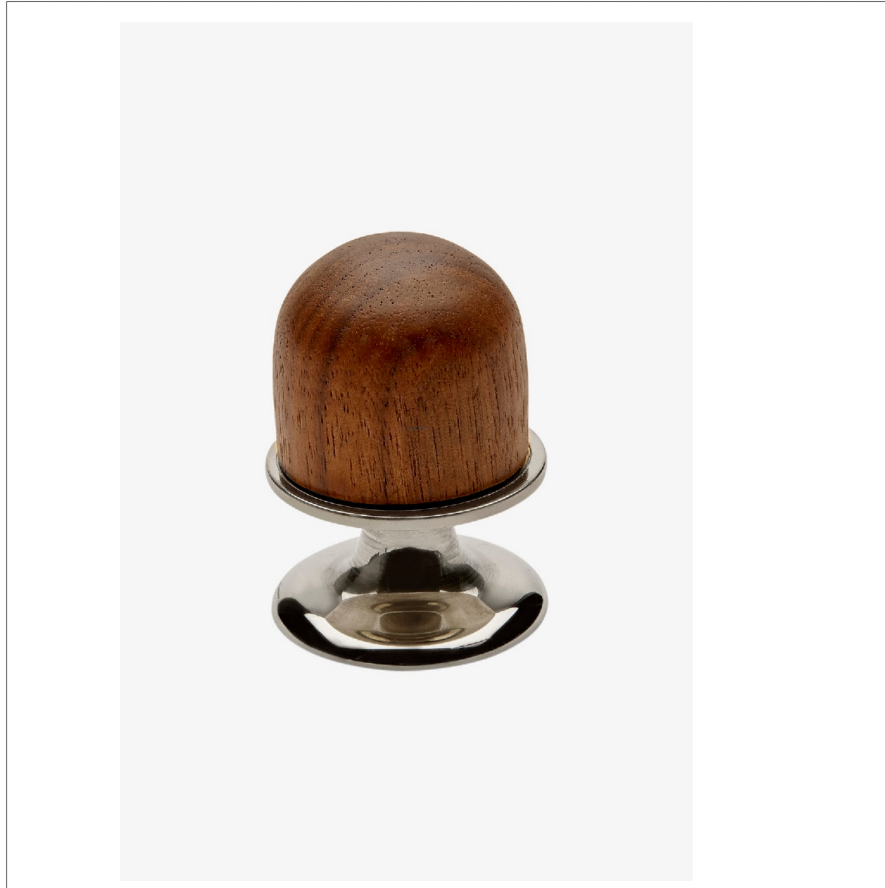


Stockton

SKHW01

Stockton 1 1/4" Walnut Knob



SHOWN IN STOCKTON 1 1/4" WALNUT KNOB | SKHW01

TECHNICAL DETAILS

INSPIRATION

The Stockton family combines hand-finished solid brass and solid walnut for distinctive midcentury-modern character. Streamlined forms with transitional appeal make these pulls equally at home in contemporary and classic settings.

CODES & STANDARDS

PRODUCT FEATURES

American Walnut paired with Brass

Walnut is protected with primer and wood lacquer

Solid Brass

Machined and hand-polished

Includes 1 x M4 Pan Head Slot 1" Machine Screw and 1 x M4 Pan Head Slot 1 1/2" Machine Screw

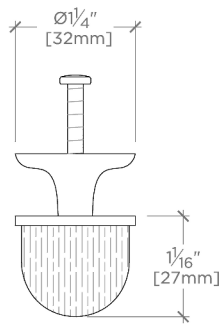
CERTIFICATIONS

PRODUCT (NOTES)

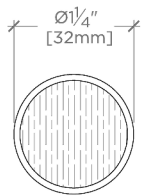
Stockton

SKHW01

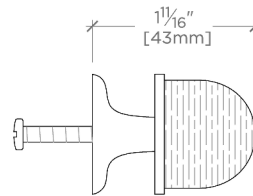
Stockton 1 1/4" Walnut Knob



TOP VIEW SCALE: 6"=1'-0"



FRONT VIEW SCALE: 6"=1'-0"



SIDE VIEW SCALE: 6"=1'-0"