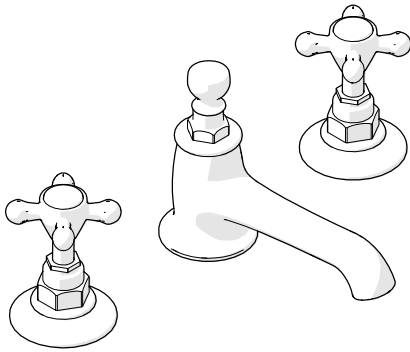


HIGHGATE

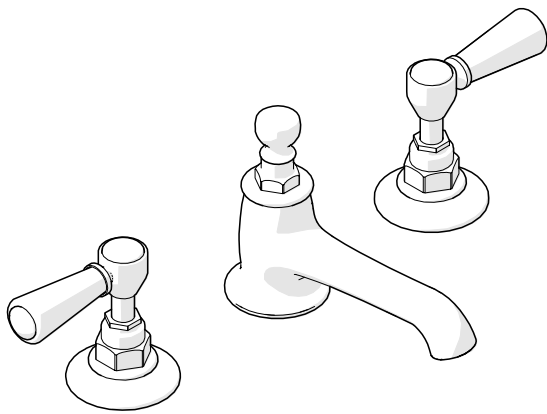
Low Profile Three Hole Deck Mounted Lavatory Faucet

INSTALLATION GUIDELINES

Metal Cross Handles
Style No. HGLS01



White Porcelain Lever Handles
Style No. HGLS10



SPECIFICATIONS:

Drain Hole Diameter: 1-1/2"
Drain Style: Pop-Up (Drain Included)
Fitting Hole Diameter: 1-3/8"
Handle Spread Maximum: 12"
Handle Spread Minimum: 8"
Inlet Connection Size: 1/2"
Inlet Connection Type: Male with supply nut
Maximum Deck Thickness: 1 -7/8"
Minimum Deck Thickness: 3/8"
Maximum Water Pressure: 80psi
Minimum Water Pressure: 20psi
Recommended Water Pressure: 45psi
Restricted Maximum Flow Rate: 1.2gpm

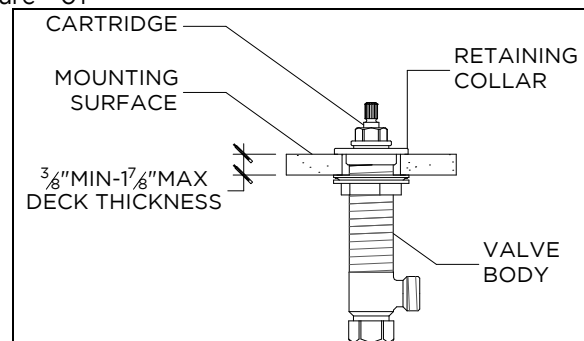
- To ensure this product is installed properly, you must read and follow these guidelines.
- The owner/user of this product must keep this information for future reference.
- Be sure your installation conforms to federal state, and local codes. In the State of Massachusetts, all installations must comply with the rules and regulations set forth within 248 CMR.

- This product must be installed by a professional licensed contractor.
- Refer to the specifications and assembly drawings attached. Product is sold partially assembled but shown fully disassembled for illustrative and service purposes only.
- Inspect this product to ensure you have all the parts required for proper installation.
- Use only a strap wrench or protected/smooth-jaw wrench on any finished surface.
- DO NOT use putty on deck fittings. Upper and lower washers are provided.

HANDLE INSTALLATION:

- Refer to Figure - 01 for Steps 1-4
 - Note: For the HGLS01 with cross handles, the valve bodies for hot and cold handles are the same Valve Body (10); for the HGLS10 with Lever handles, use the Valve Body (10) for Hot & Valve Body (24) for cold.
1. Thread the nut (9) onto the valve body (10), then place the metal washer (8) and rubber washer (7) over the valve body.
 2. Thread the nut (9) all the way down the valve body (10), then insert the valve into the hole on the mounting surface from below.
 3. Thread the retaining collar (5) onto the valve body (10) until it stops. Make sure the o-ring (6) is under the collar.
 4. Allow the collar to rest on the mounting surface and tighten the nut (9) against the underside of the mounting surface to secure the valve body. NOTE: There is a 3/8" MINIMUM deck thickness requirement.

Figure - 01



5. Place the escutcheon (3) with washer (4) over the protruding valve body (10). In the correct orientation thread the handle assembly (1 or 2) onto cartridge until fully seated.

These guidelines have been prepared for the professional contractor to aid in the installation of: HIGHGATE LOW PROFILE THREE HOLE LAVATORY FAUCET WITH METAL CROSS HANDLES (STYLE# HGLS01) & WHITE PORCELAIN LEVER HANDLES (STYLE # HGLS10). All dimensions are based on original specification and are subject to change and variation. Please consult your Design Associate for current specifications.

WATERWORKS
STUDIO

HIGHGATE

Low Profile Three Hole Deck Mounted Lavatory Faucet

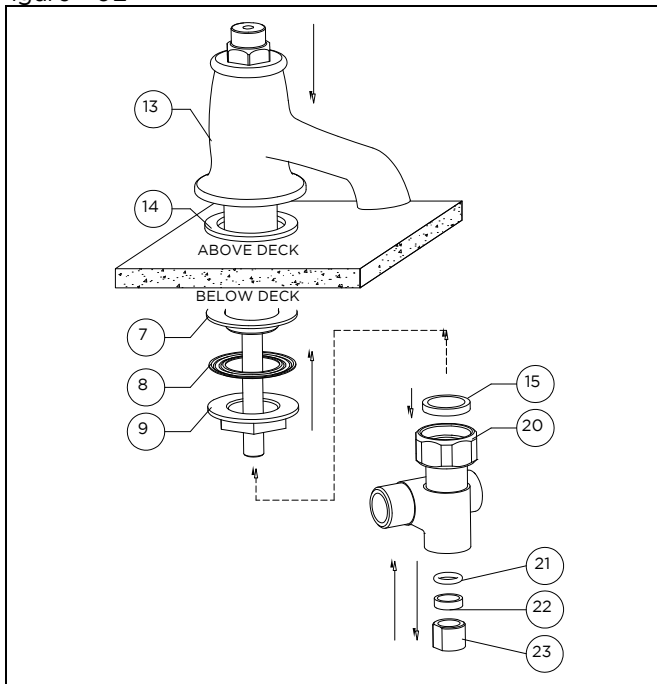
INSTALLATION GUIDELINES

- Repeat steps 1-5 to install the second valve body and handle assembly.

SPOUT INSTALLATION:

- Refer to Figure - 02 for Steps 7-10
- Loosen the packing nut (23) to prevent damage to the o-ring (21) then remove the Inlet Tee (20), rubber washer (7), metal washer (8) and nut (9) from the spout assembly (13).
 - With the washer (14), place the spout assembly (13) with threaded shank through the hole on the deck.
 - From under the deck, place the rubber washer (7) and metal washer (8) back onto the threaded shank, then thread the nut (9) and tighten to secure the spout. Ensure the spout sits properly on the mounting surface.
 - Thread on the Inlet Tee to the end of the spout assembly (13) with the rubber gasket (15) ensuring that the spout's inner tube passes through the Inlet Tee. Make sure to tighten the packing nut (23) to ensure a watertight seal and prevent leaks.

Figure - 02



- Insert the vertical lift rod (12) into the top of the spout.

DRAIN INSTALLATION:

- Remove the tailpiece (38), lower drain body (37), washer (36), and mounting hardware (33 - 35) from the drain flange (32).

- Set the drain flange (32) in the lavatory drain opening using putty or a clear adhesive silicone depending on the mounting surface material*.
- Re-install the mounting hardware (34 & 35) until fully secured. You can discard the upper drain gasket (33). Putty or clear adhesive silicone may be used to ensure a water-tight seal between the lower drain gasket (34) and lavatory*.
- Thread the lower drain body (37) back onto the drain flange using the washer (36) provided.
- Make sure the pivot socket is in place, then insert the horizontal lift rod (29) into the lower drain body (37) and secure the rod using the knurled nut (28). Ensure that the rod passes through the hole in the drain stopper bolt (31).
- Connect the horizontal and vertical lift rods using the connecting rod (26). Pass the horizontal rod through one of the holes on the connecting rod. Make sure to use the v-clip (27). Pass the vertical rod through the holes on the top of the connecting rod and tighten the screw (25). Adjust as needed.
- Thread the tailpiece (38) back into the lower drain body.

FINISH THE INSTALLATION:

- Thread the supply hoses (18) with the Strainer Washers (19) to the Inlet Tee (20).
- Connect the valve bodies to the water supply valve (SOLD SEPARATELY).
- Carefully open the hot and cold valves to flush out any debris in the supply lines. Let the water run for a few minutes, then shut the supply valves off and remove supply hoses from Inlet Tee (20) to access the Strainer Washers (19). Clean the filters washers of any debris and repeat Step 19.

INSPECT THE INSTALLATION:

- The flow restrictor (17) is located in the Inlet Tee (20) and is accessible by removing the flow restrictor cap (16).
- Inspect all connections for leaks.
- Close the drain and fill the sink with water to make sure the drain stopper assembly (31) operates and seals properly.

➤ **If further assistance is required, please contact Product Support at 1-800-927-2120 (9am-6pm EST).**

* Putty contains oils and can cause permanent discoloration on certain materials such as marble, granite and any porous surface.

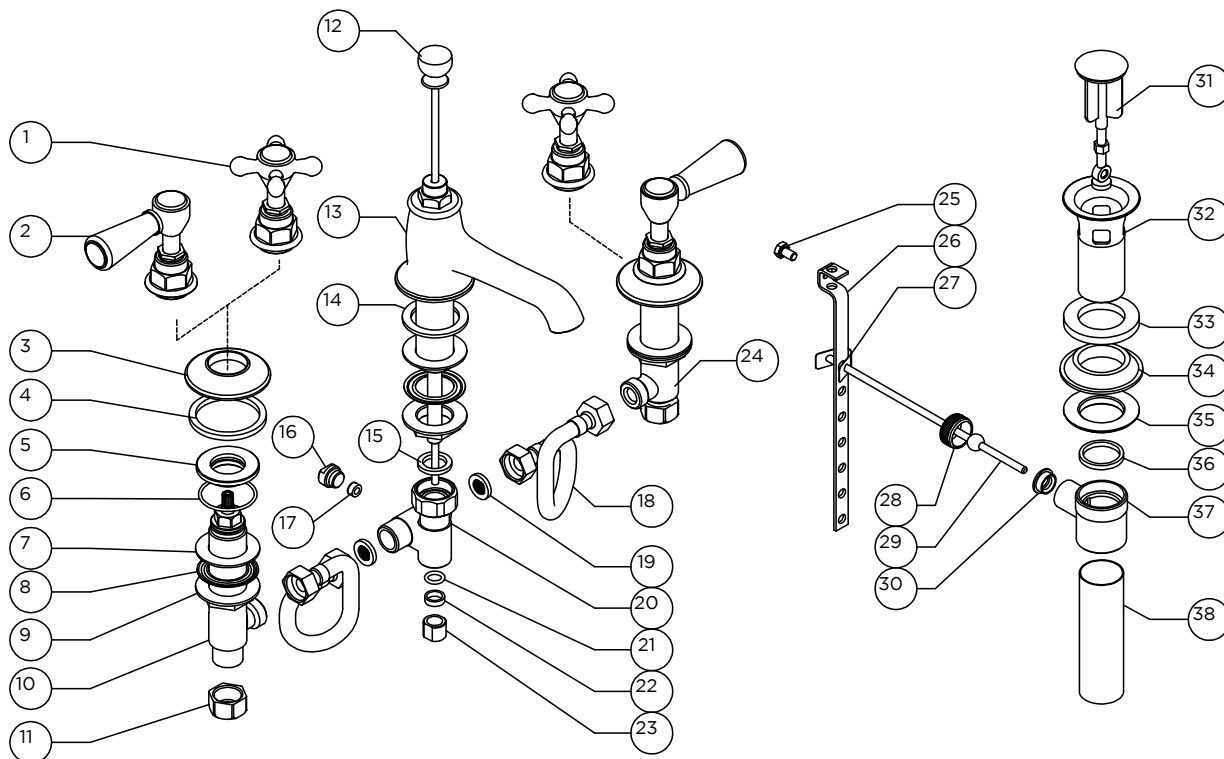
These guidelines have been prepared for the professional contractor to aid in the installation of: **HIGHGATE LOW PROFILE THREE HOLE LAVATORY FAUCET WITH METAL CROSS HANDLES (STYLE# HGLS01) & WHITE PORCELAIN LEVER HANDLES (STYLE # HGLS10)**
All dimensions are based on original specification and are subject to change and variation.
Please consult your Design Associate for current specifications.

WATERWORKS
STUDIO

HIGHGATE

Low Profile Three Hole Deck Mounted Lavatory Faucet

INSTALLATION GUIDELINES



		Description	QTY
HGLS01 (CROSS HANDLE)	1	Cross Handle	2
	10	Valve Body, Clockwise Close	2
HGLS10 (LEVER HANDLE)	2	Lever Handle	2
	10	Valve Body, Clockwise Close	1
COMMON PARTS	24	Valve Body, Counter-clockwise Close	1
	3	Escutcheon	2
	4	Foam Gasket	2
	5	Retaining Collar	2
	6	Retaining Collar O-Ring	2
	7	Rubber Washer	3
	8	Metal Washer	3
	9	Nut	3
	11	Inlet Supply Nut	2
	12	Lift Knob & Rod	1
	13	Spout Assembly	1
	14	Rubber Gasket	1
	15	Rubber Washer	1
	16	Flow Restrictor Cap	1
	17	Flow Restrictor	1
	18	Flexible Supply Hose	2
	19	Strainer Washer	1
	20	Inlet Tee	1
	21	O-Ring	1
	22	Spacer	1
	23	Packing Nut	1
	25	Screw	1
	26	Rod Connecting Link	1
	27	Retaining V-Clip	1
	28	Nut	1
	29	Horizontal Pivot Rod	1

COMMON PARTS (CONT.)	30	Plastic Sleeve	1
	31	Pop-Up Drain	1
	32	Upper Drain Flange	1
	33	Washer	1
	34	Formed Gasket	1
	35	Drain Nut	1
	36	Washer	1
	37	Lower Drain Body	1
	38	Tailpiece	1

These guidelines have been prepared for the professional contractor to aid in the installation of: **HIGHGATE LOW PROFILE THREE HOLE LAVATORY FAUCET WITH METAL CROSS HANDLES (STYLE# HGLS01) & WHITE PORCELAIN LEVER HANDLES (STYLE # HGLS10)**
All dimensions are based on original specification and are subject to change and variation.
Please consult your Design Associate for current specifications.

WATERWORKS
STUDIO