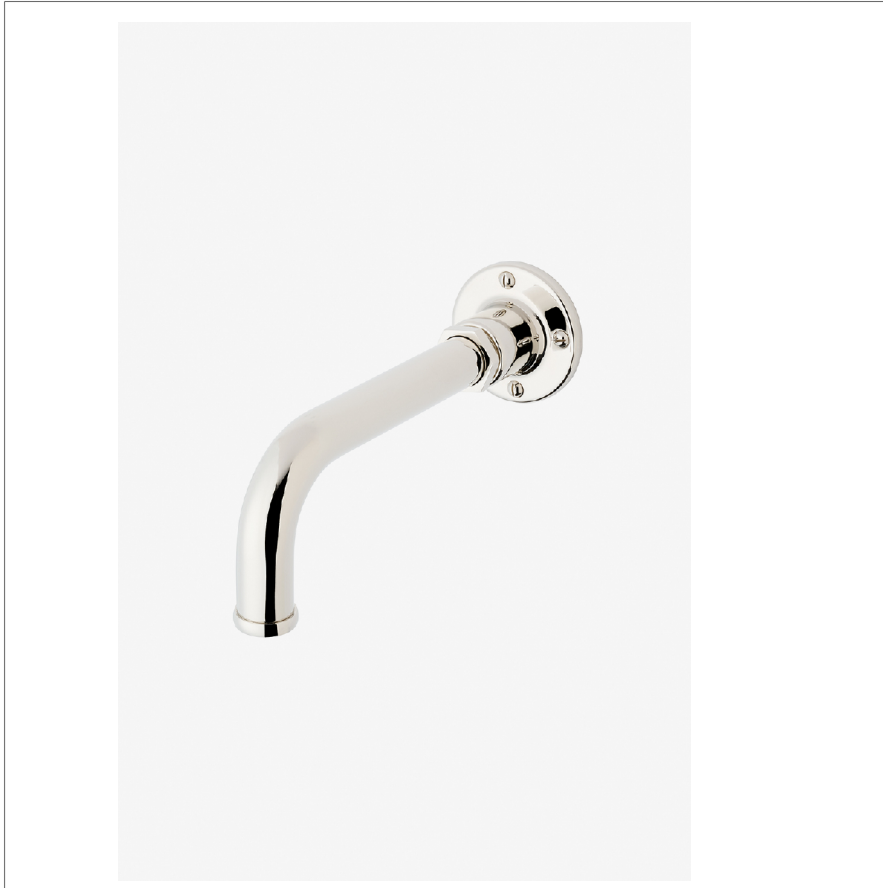


Regulator

RGTS01

Regulator Wall Mounted Tub Spout



SHOWN IN REGULATOR WALL MOUNTED TUB SPOUT | RGTS01

TECHNICAL DETAILS

ADA Compliance: No
Depth/Width: 217 mm
Fittings Hole Diameter: 32 mm
Height: 76 mm
Inlet Connection Size: 1/2"
Inlet Connection Type: Female NPT
Length: 76 mm
Primary Material: Brass
Suggested Application: Bath
Water Pressure Maximum: 6.0 bar
Water Pressure Minimum: 1.5 bar
Water Pressure Recommended: 3.0 bar

INSPIRATION

A play on industrial controls from the early 1900s, when pride was lavished on parts. Translated to handcrafted, fittings project rugged beauty through powerful, detailed shapes.

CODES & STANDARDS

ASME A112.18.1/CSA B125.1, State of MA

PRODUCT FEATURES

Wall Mounted

Stocked in Nickel and Brass

Unrestricted Flow

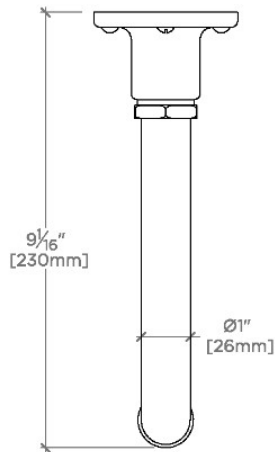
CERTIFICATIONS

PRODUCT (NOTES)

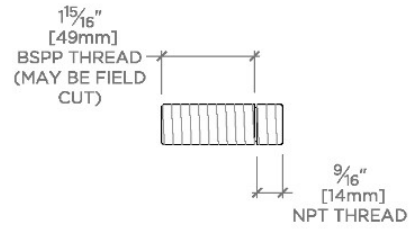
Regulator

RGTS01

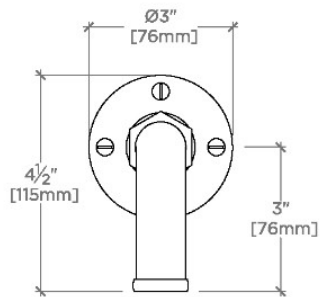
Regulator Wall Mounted Tub Spout



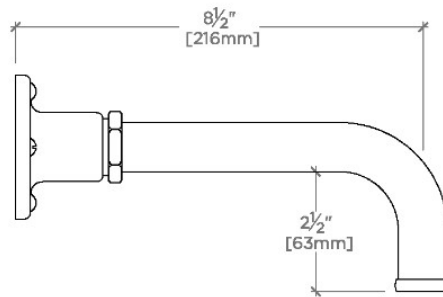
TOP VIEW SCALE: 3"=1'-0"



ADAPTER INCLUDED-INTERNATIONAL USE ONLY



FRONT VIEW SCALE: 3"=1'-0"



SIDE VIEW SCALE: 3"=1'-0"