



ESTB. 1978

WATERWORKS

Grove Twenty



Rugged refinement. Handcrafted from California clay, Grove Twenty brings organic warmth and character throughout the home. Laced with tiny pinholes, these brown bricks are individually hand-glazed to highlight their slightly rustic texture, infusing each tile with unique movement and color variation. Choose from 4 field sizes and 16 colors in both glossy and matte, including elegant neutrals and rich, vibrant tones.



ESTB. 1978

WATERWORKS

Grove Twenty

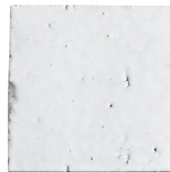
FIELD TILE



2 1/4" X 3 5/8" *
GTF024



2 1/4" X 7 5/8" * †
GTF028



3 5/8" X 3 5/8" *
GTF044



3 5/8" X 7 5/8" *
GTF048

ARCHITECTURAL ELEMENTS



STANDARD RAIL
2 3/8" X 7 5/8"
GTRL01



BOLECTION RAIL
2" X 7 5/8"
GTRL02



COVE BASE
3" X 7 5/8"
GTBS01



COVE BASE
6" X 7 5/8"
GTBS02

* Coordinating single and corner glazed edges available

† Available as part of the instock program including coordinating glazed edges.

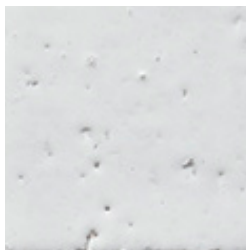


ESTB. 1978

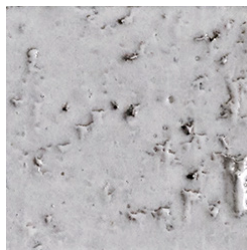
WATERWORKS

Grove Twenty

PALETTE



Bliss Glossy V3



Bliss Matte V3



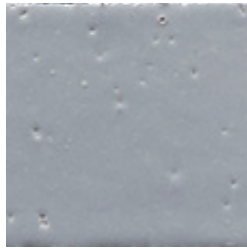
Alpine Gray Glossy V3



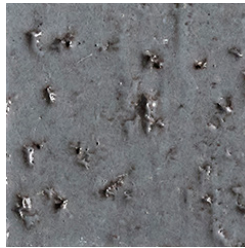
Alpine Gray Matte V3



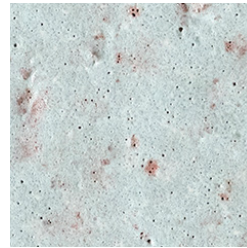
Morel Glossy V5



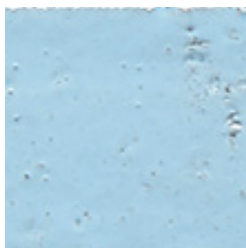
Argent Glossy V3



Argent Matte V3



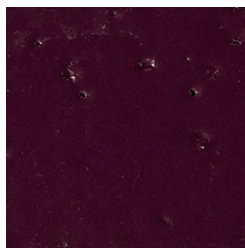
Icicle Matte V5



Mariana Glossy V3



Crimson Glossy V4



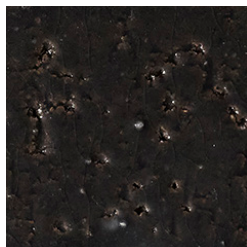
Plum Glossy V4



Fern Matte V5



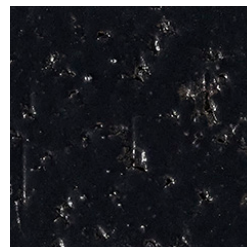
Navy Glossy V3



Portobello Glossy V4



Jet Glossy V3



Jet Black Matte V3

* See variation chart on page 4

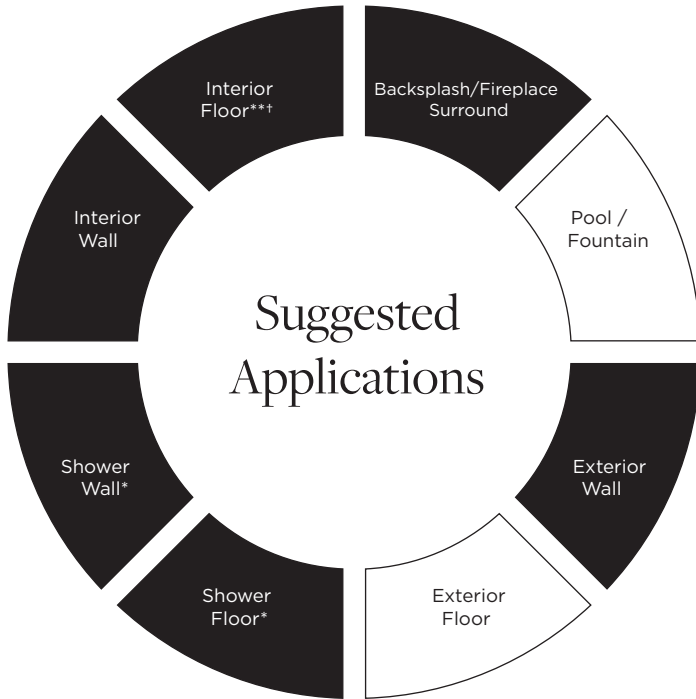
** Surface texture is inherent in the material; glazes may crackle



ESTB. 1978

WATERWORKS

Grove Twenty



Variation Level

V1	V2	V3	V4	V5

1. MINIMAL, IF ANY COLOR VARIATION
2. SLIGHT COLOR VARIATION CAN BE EXPECTED
3. A MEDIUM RANGE OF COLOR VARIATION IS TYPICAL; DARKER AND LIGHTER TONES ARE EVIDENT
4. CONSIDERABLE COLOR VARIATION IS TYPICAL; FROM DARKS TO LIGHTS AND SOME TONE CHANGES
5. EXTREME COLOR VARIATION CAN BE EXPECTED - THE RANGE IS OFTEN DIFFERING BUT COMPLEMENTARY

PLEASE REFER TO COLLECTION TEARSHEET FOR VARIATION LEVEL BY COLOR.

SAMPLING IS RECOMMENDED TO UNDERSTAND VARIATION OF MATERIAL

Product Variation

Color, size and surface variation is an inherent characteristic of our handmade tile and should be expected. Refer to our color variation ranking for further details. Please inquire for additional information.

Custom Opportunities Available

Minimums and extended lead-times may apply.

Please contact your local Waterworks showroom or our direct sales team at 800.899.6757.

Application Notes

* Suitable for use in wet environments, including steam showers, if properly installed, sealed, and maintained

** Suitable for light traffic floor ONLY

† Suitable for radiant heat floors

Installation / Maintenance

- WATERWORKS ASSUMES NO RESPONSIBILITY FOR INSTALLATION
- Installation constitutes acceptance.
- Tile should be installed by a licensed and experienced tile setter.
- Refer to TCNA (Tile Council of North America) or ANSI standards for installation guidelines.
- All tile must be inspected PRIOR to installation.
- Dry lay tile prior to installation to allow for blending of color variation.
- Tile should be sealed PRIOR to grouting. Dark grout can stain crackle tile.
- Waterworks recommends a grouted test panel prior to installation to understand final appearance of grouted materials
- Re-seal tile and grout after installation and maintain regularly.

Thickness

5/8"*

*Nominal: +/- 1/8"

Suggested Grout Lines

1/8" - 1/4"