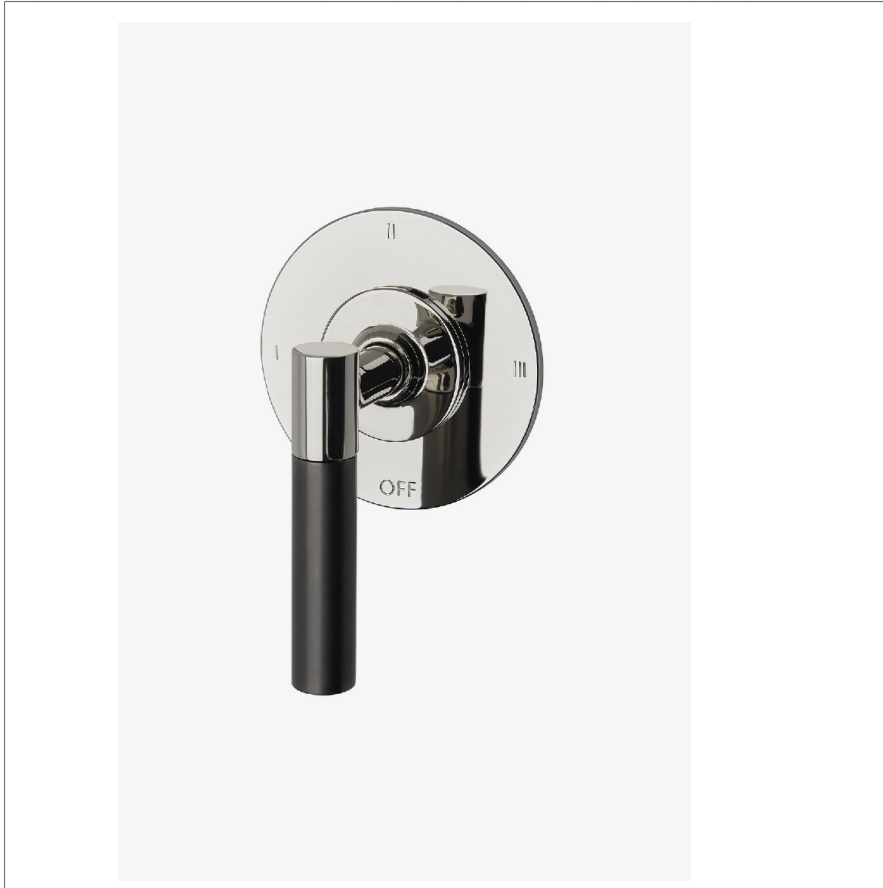


Bond

B3T12B

Bond Tandem Series Three Way Thermostatic Diverter Trim with Roman Numerals and Two-Tone Lever Handle



SHOWN IN BOND TANDEM SERIES THREE WAY THERMOSTATIC DIVERTER TRIM WITH ROMAN NUMERALS AND TWO-TONE LEVER HANDLE | B3T12B

TECHNICAL DETAILS

ADA Compliance: Yes
 Integrated Diverter: N
 Number Of Holes: One Hole
 Primary Material: Brass

INSPIRATION

Bond draws inspiration from the Aesthetic Movement, rare vintage lighters, and modern industrial design. The result is a contemporary collection with a soulful quality that inhabits the full range of modern style, from austere minimalism to warm contemporary.

CODES & STANDARDS

ASME A112.18.1/CSA B125.1, State of MA

PRODUCT FEATURES

Lever Handle

For use with a Thermostatic shower system and three waterway outlets such as a handshower, shower head, and tub spout

Features Two-Tone Lever Handle

Stocked in Nickel and Brass

Requires rough valve, sold separately: GUDV66

CERTIFICATIONS

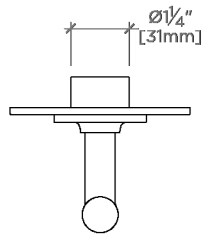


PRODUCT (NOTES)

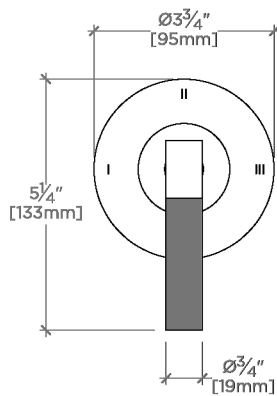
Bond

B3T12B

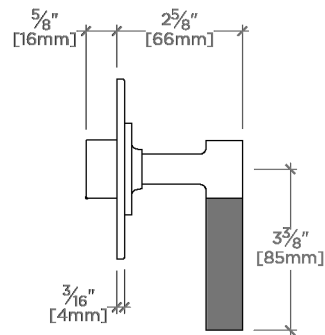
Bond Tandem Series Three Way Thermostatic Diverter Trim
with Roman Numerals and Two-Tone Lever Handle



TOP VIEW SCALE: 3"=1'-0"



FRONT VIEW SCALE: 3"=1'-0"



SIDE VIEW SCALE: 3"=1'-0"