

## Finot

NO2T20

Finot Two Way Thermostatic Diverter Trim with Modern Dots and Lever Handle



SHOWN IN FINOT TWO WAY THERMOSTATIC DIVERTER TRIM WITH MODERN DOTS AND LEVER HANDLE | NO2T20

### TECHNICAL DETAILS

ADA Compliance: Yes  
 Fittings Hole Diameter: 51 mm  
 Handle Turn Angle: Quarter Turn  
 Integrated Diverter: N  
 Number Of Holes: One Hole  
 Primary Material: Brass

### INSPIRATION

Finot seamlessly blends meticulous details with contemporary sensibility. A true integration of design and engineering expertise, this collection is comprised of parts that are decisively cast and forged to achieve painstaking precision and refinement.

### CODES & STANDARDS

NO2T20X, ASME A112.18.1/CSA B125.1

### PRODUCT FEATURES

Lever Handle

For Use With a Thermostatic Shower System and Two Waterway Outlets

Features Modern Dots Representing Outlet Position

Stocked in Chrome, Nickel, Brass and Dark Nickel

Requires Rough Valve, Sold Separately: GUDV2T

### CERTIFICATIONS

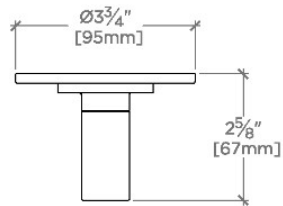


### PRODUCT (NOTES)

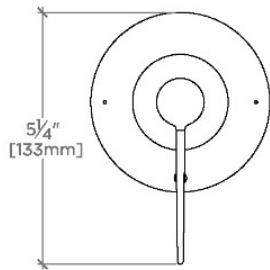
## Finot

NO2T20

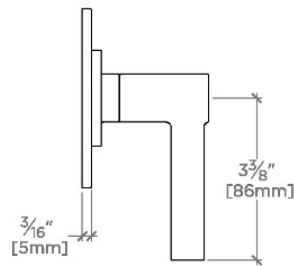
Finot Two Way Thermostatic Diverter Trim with Modern Dots  
and Lever Handle



TOP VIEW SCALE: 3"=1'-0"



FRONT VIEW SCALE: 3"=1'-0"



SIDE VIEW SCALE: 3"=1'-0"