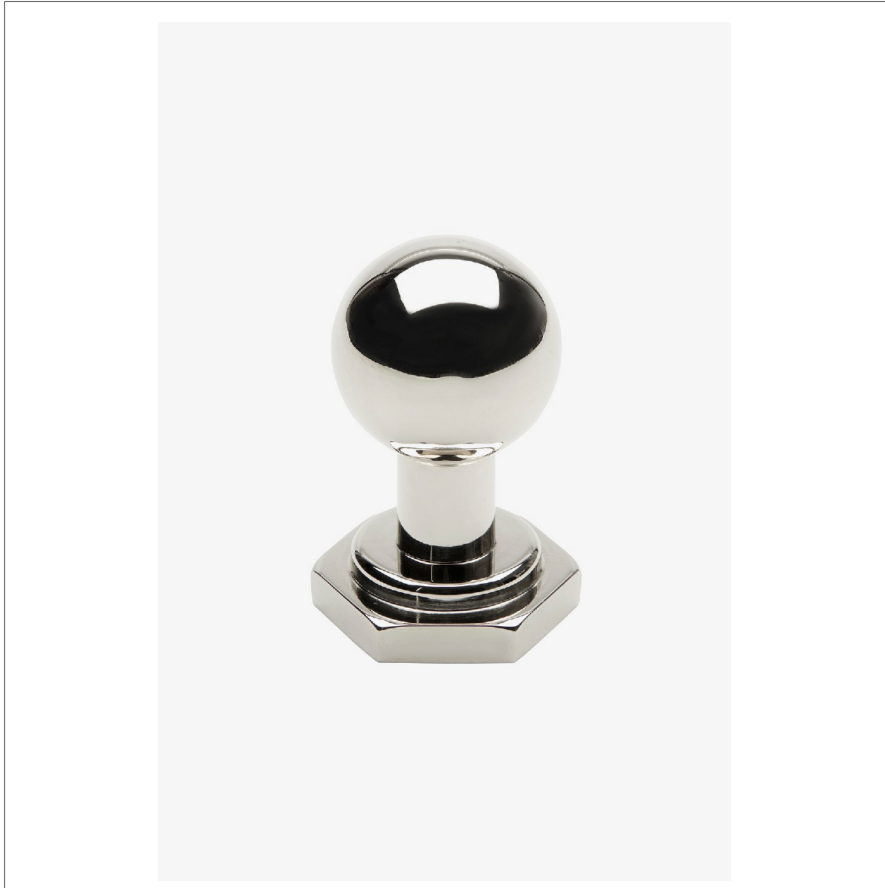


REGULATOR

RGHW21

Regulator 1" Round Knob



SHOWN IN REGULATOR 1" ROUND KNOB | RGHW21

TECHNICAL DETAILS

Depth/Width: 1 1/4"
Hardware Primary Material: Solid Brass
Hardware Shape: Knob
Primary Material: Brass

INSPIRATION

With striking scale and unique design, Regulator commands attention through its tribute to early 20th-century boiler room controls, when pride was lavished on hard-built parts. Each handcrafted fitting brings dramatic beauty through powerful proportions and honest details.

CODES & STANDARDS

PRODUCT FEATURES

Solid Brass

Made in Portugal

Includes 1 x M4 Pan Head Slot 1" Machine Screw and 1 x M4 Pan Head Slot 1 1/2" Machine Screw

CERTIFICATIONS

PRODUCT (NOTES)

REGULATOR

RGHW21

Regulator 1" Round Knob

