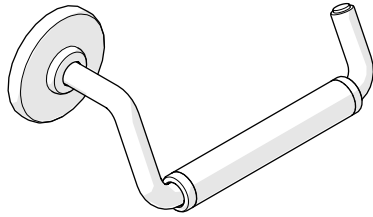


# INSTALLATION GUIDELINES

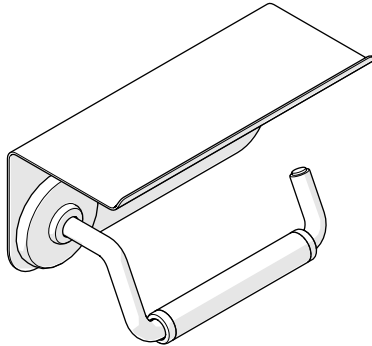
## PAPER HOLDER

### LUDLOW VOLTA EDITION ONE ARM PAPER HOLDER WITH ROUND ESCUTCHEON



STYLE
LDPH25

### LUDLOW VOLTA EDITION ONE ARM PAPER HOLDER WITH ROUND ESCUTCHEON AND SHELF

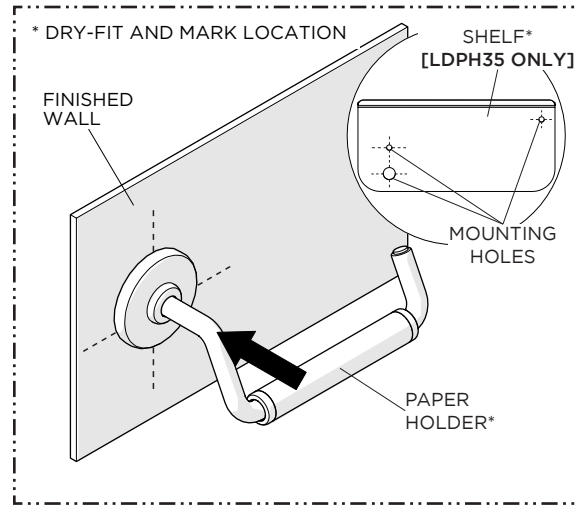


STYLE
LDPH35

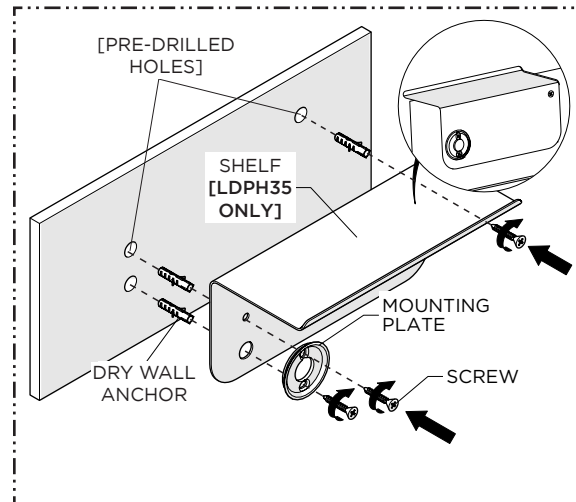
#### IMPORTANT:

- To ensure this product is installed properly, you must read and follow these guidelines.
- The owner/user of this product must keep this information for further reference.
- This product must be installed by a professional licensed contractor.
- Inspect this product to ensure you have all the parts required for proper installation.
- If further assistance is required, please contact Product Support at 1-800-927-2120 Monday through Friday, 8am - 6pm EST.
- Refer to the separate Service Parts Documents for available replacement parts.

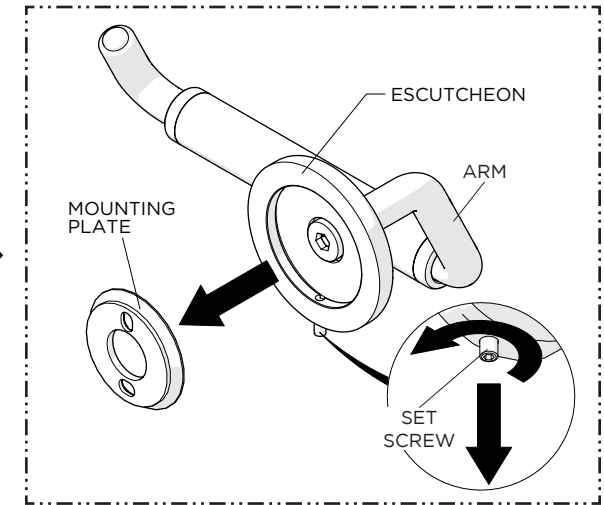
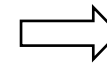
# WATERWORKS



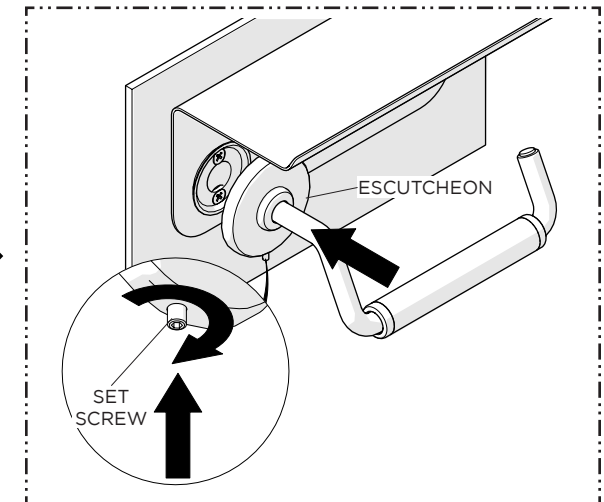
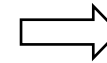
1. Dry-fit the PAPER HOLDER or SHELF to the finished wall and mark the ideal location making sure to hold the product level.



3. Using the previous marks as a reference, install the MOUNTING PLATE using the SCREWS and ANCHORS provided.



2. Loosen, but do **NOT** remove, the SET SCREW on the bottom of ESCUTCHEON.



4. With proper orientation, place the ARM onto the MOUNTING PLATE, securely tighten the SET SCREW using 1/16" [1.5 mm] HEX key.