

Alta

ALVN09

Alta Integrated Double Vanity with Square Legs and Hardware with SALV26 Sinks and Slab 67" x 22 1/2" x 34 1/2" with 4" x 3/4" Backsplash



SHOWN IN ALTA INTEGRATED DOUBLE VANITY WITH SQUARE LEGS AND HARDWARE WITH SALV26 SINKS AND SLAB 67" X 22 1/2" X 34 1/2" WITH 4" X 3/4" BACKSPLASH | ALVN09

TECHNICAL DETAILS

ADA Compliance: No
Adjustable Levelers Feet: N
Bowl Shape: Oval
Depth To Overflow: 114 mm
Drain Hole Depth: 44 mm
Drain Hole Diameter: 44 mm
Fittings Hole Depth: 32 mm
Fittings Hole Diameter: 35 mm
Overflow Opening: Yes
Primary Material: Wood
Sink Visibility: N

INSPIRATION

Modern & minimalist. Alta incorporates mid-century elements with notable architectural & industrial influences.

CODES & STANDARDS

PRODUCT FEATURES

- Designed by and exclusive to Waterworks
- Vanity with three drawers and Integrated Hardware; specify Brass or Nickel when ordering
- Stocked in Clear Oak Finish
- Includes Saxby sinks and choice of stocked stone tops in Carrara or Arabescato
- Install with or without backsplash (included)

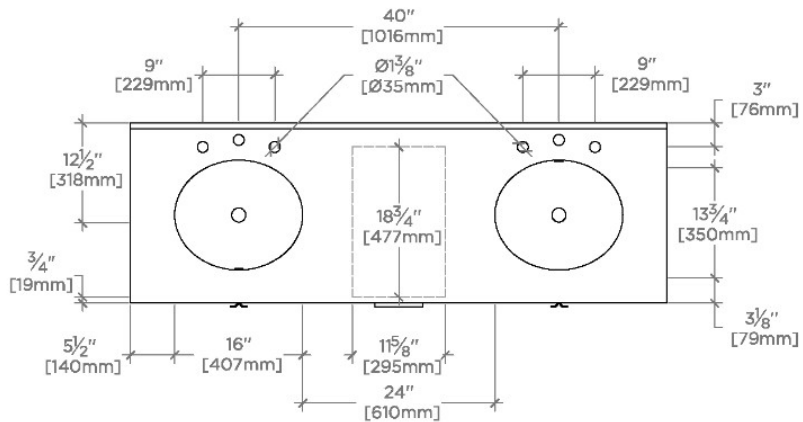
CERTIFICATIONS

PRODUCT (NOTES)

Alta

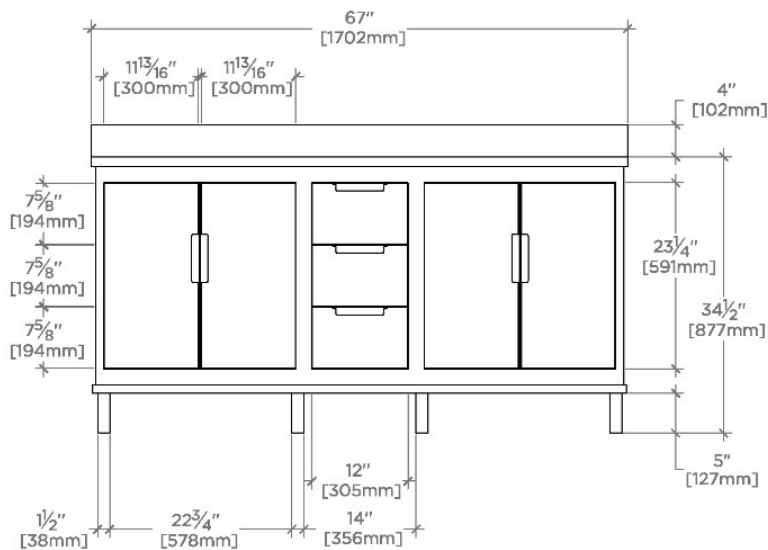
ALVN09

Alta Integrated Double Vanity with Square Legs and Hardware with SALV26 Sinks and Slab 67" x 22 1/2" x 34 1/2" with 4" x 3/4" Backsplash



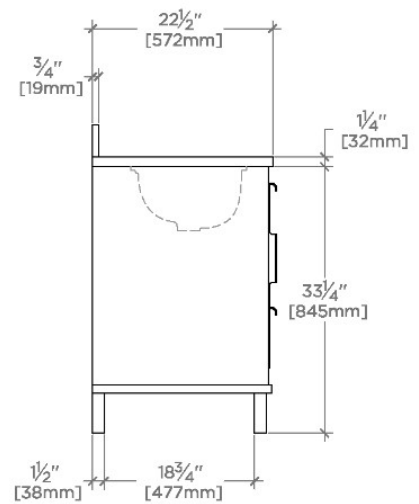
TOP VIEW

SCALE: 1/2"=1'-0"



FRONT VIEW

SCALE: 1/2"=1'-0"



SIDE VIEW

SCALE: 1/2"=1'-0"