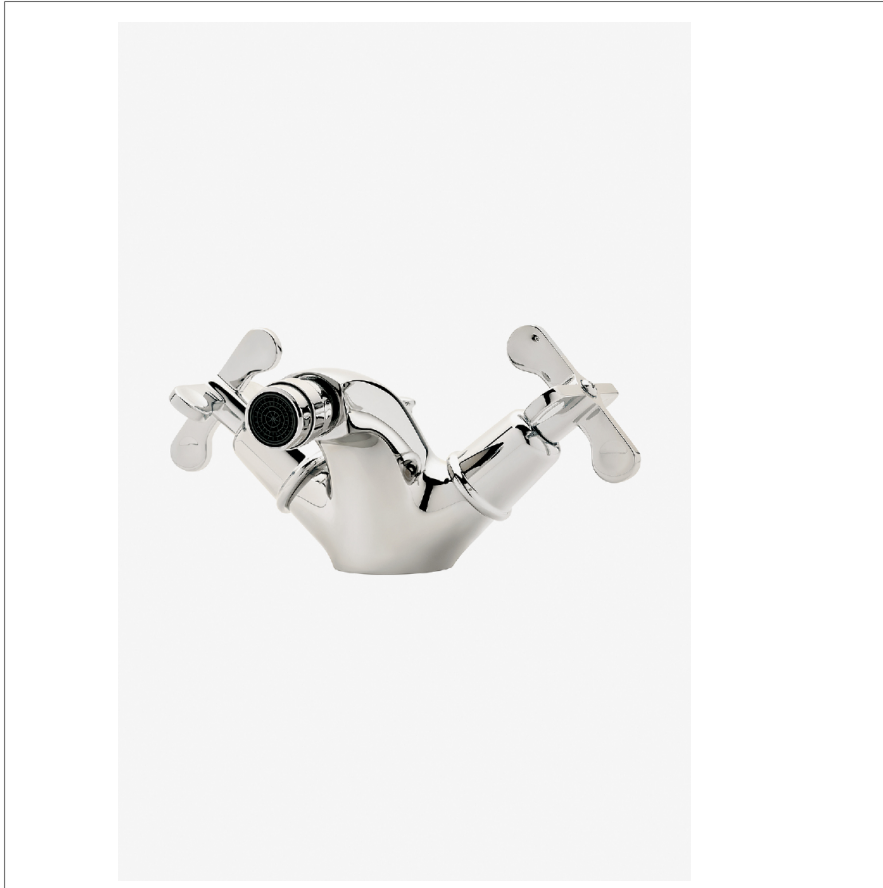


## Henry

HNBF20

Henry One Hole Bidet Fitting with Cross Handles



SHOWN IN HENRY ONE HOLE BIDET FITTING WITH CROSS HANDLES | HNBF20

### TECHNICAL DETAILS

Deck Thickness Maximum: 40 mm  
Drain Depth Maximum: 57 mm  
Drain Depth Minimum: 38 mm  
Drain Hole Diameter: 38 mm  
Drain Style: Pop-Up  
Fittings Hole Diameter: 35 mm  
Inlet Connection Size: 3/8"  
Inlet Connection Type: O.D. SUPPLY TUBING  
Pivot: Y  
Water Pressure Maximum: 6.0 bar  
Water Pressure Minimum: 1.5 bar  
Water Pressure Recommended: 3.0 bar

### INSPIRATION

Influenced by the connection of industry and art Henry easily transitions between modern, traditional, utilitarian and classic settings.

### CODES & STANDARDS

### PRODUCT FEATURES

Cross Handles

Lift Rod controls Universal Push-Touch Pop up Drain (UNLD40)

Includes 3/8mm Supply Tubes and can be field cut for 10mm installations

Solid Brass Construction

Stocked in Nickel and Brass

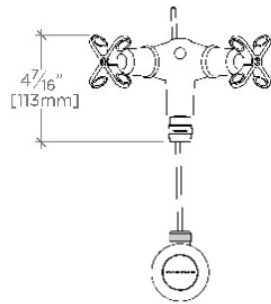
### CERTIFICATIONS

### PRODUCT (NOTES)

## Henry

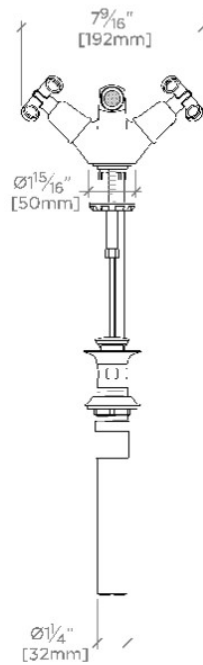
HNBF20

Henry One Hole Bidet Fitting with Cross Handles



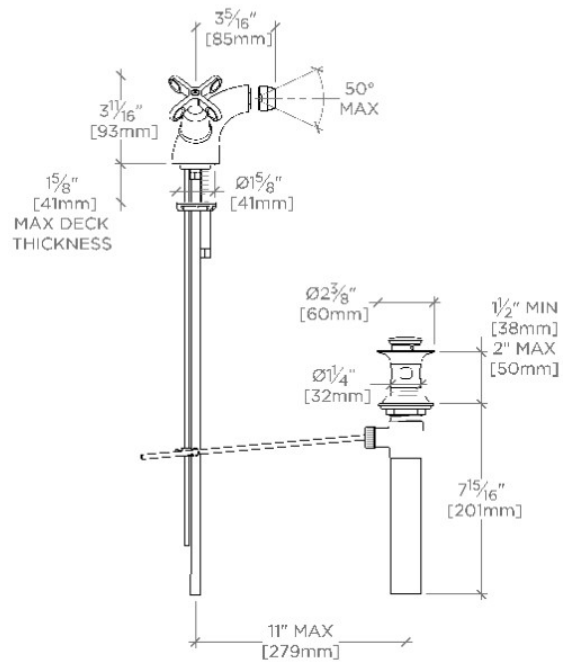
TOP VIEW

SCALE: 1/2"=1'-0"



FRONT VIEW

SCALE: 1/2"=1'-0"



SIDE VIEW

SCALE: 1/2"=1'-0"