

ALTA

100698

Alta Integrated Double Vanity with Square Legs and Hardware 66" x 22" x 33 1/4" - BASE ONLY



SHOWN IN ALTA INTEGRATED DOUBLE VANITY WITH SQUARE LEGS AND HARDWARE 66" X 22" X 33 1/4" - BASE ONLY | 100698

TECHNICAL DETAILS

ADA Compliance: No
Adjustable Levelers Feet: N
Bowl Shape: Oval
Depth To Overflow: 4 1/2"
Drain Hole Depth: 1 3/4"
Drain Hole Diameter: 1 3/4"
Fittings Hole Depth: 1 1/4"
Fittings Hole Diameter: 1 3/8"
Overflow Opening: Yes
Primary Material: Wood
Sink Visibility: N

INSPIRATION

Modern & minimalist. Alta incorporates mid-century elements with notable architectural & industrial influences.

CODES & STANDARDS

PRODUCT FEATURES

Designed by and exclusive to Waterworks

Vanity with three drawers and Integrated Hardware; specify Brass or Nickel when ordering

Stocked in Clear Oak Finish

Available with sink and slab top: use ALVN09

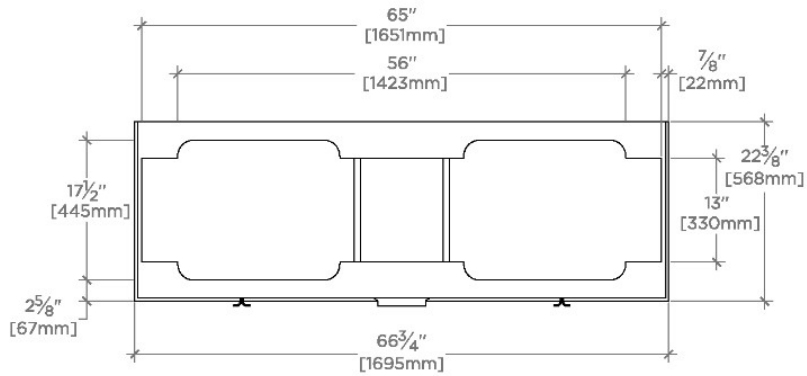
CERTIFICATIONS

PRODUCT (NOTES)

ALTA

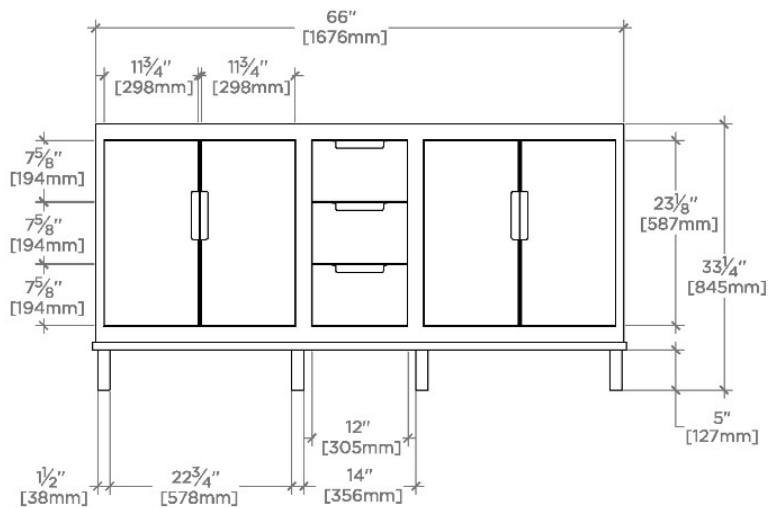
100698

Alta Integrated Double Vanity with Square Legs and Hardware 66" x 22" x 33 1/4" - BASE ONLY



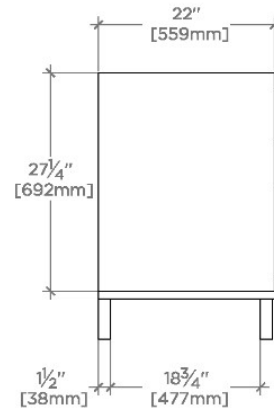
TOP VIEW

SCALE: 1/2"=1'-0"



FRONT VIEW

SCALE: 1/2"=1'-0"



SIDE VIEW

SCALE: 1/2"=1'-0"