

## Normandy

NOLV33

Normandy Drop In or Undermount Oval Hammered Copper Lavatory Sink 21 5/8" x 14 9/16" x 6 7/8"



SHOWN IN NORMANDY DROP IN OR UNDERMOUNT OVAL HAMMERED COPPER LAVATORY SINK 21 5/8" X 14 9/16" X 6 7/8" | NOLV33

### TECHNICAL DETAILS

ADA Compliance: When installed per ADA guidelines  
 Bowl Shape: Oval  
 Depth To Overflow: 102 mm  
 Depth/Width: 370 mm  
 Drain Hole Depth: 41 mm  
 Drain Hole Diameter: 45 mm  
 Drain Style: Center Drain  
 Height: 175 mm  
 Installation Type: Drop In or Undermount  
 Length: 549 mm  
 Number Of Holes: Two Hole  
 Outer Rim Shape: Oval  
 Overflow Opening: Yes  
 Primary Material: Hammered Copper  
 Suggested Application: Bath

### INSPIRATION

Modeled after antique French copper cookware, each Normandy sink is hammered and polished by hand according to old French tradition. The process involves over 40 steps and countless hours of craftsmanship, creating strikingly authentic, one-of-a-kind designs.

### CODES & STANDARDS

### PRODUCT FEATURES

- Handcrafted in France from sheets of copper and formed in individual molds.
- The Normandy sinks are finished with a burnishing hammer and polished by hand.
- Suitable for master baths and powder rooms.

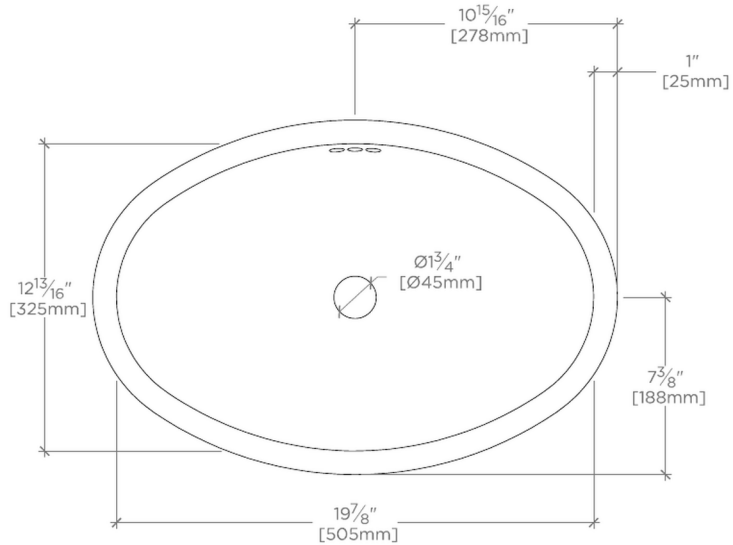
### CERTIFICATIONS

Dimensions of sinks are nominal and are subject to slight variations.  
**PRODUCT (NOTES)**

## Normandy

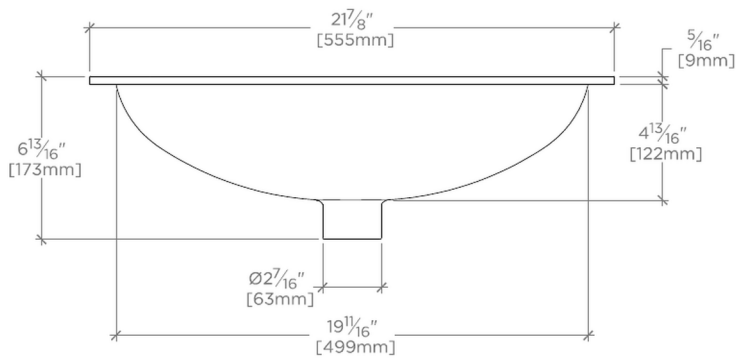
NOLV33

Normandy Drop In or Undermount Oval Hammered Copper  
Lavatory Sink 21 5/8" x 14 9/16" x 6 7/8"



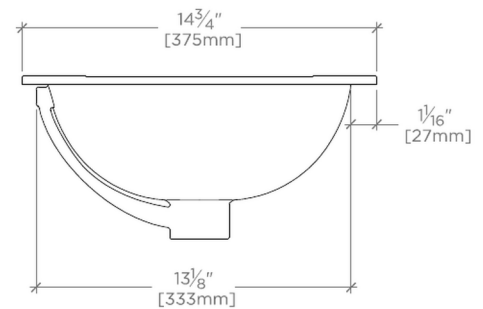
TOP VIEW

SCALE:  $1\frac{1}{2}"=1'-0"$



FRONT VIEW

SCALE:  $1\frac{1}{2}"=1'-0"$



SIDE VIEW

SCALE:  $1\frac{1}{2}"=1'-0"$