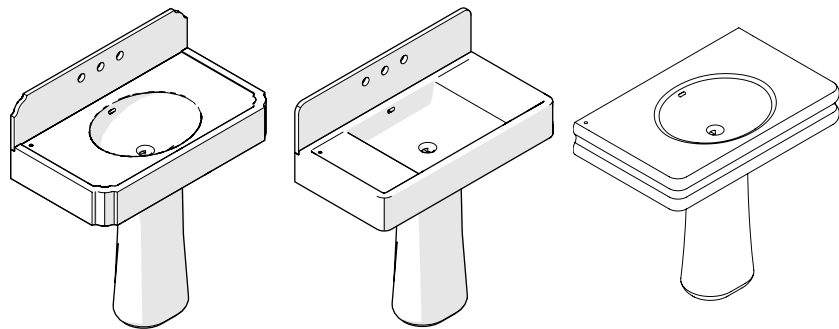


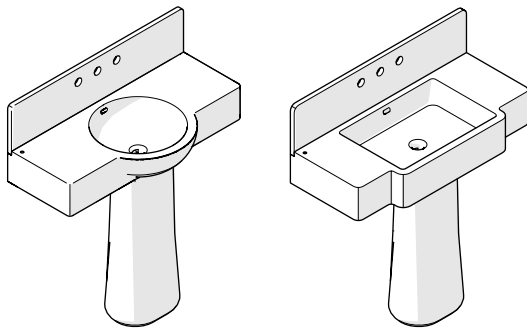
# INSTALLATION GUIDELINES

## LAVATORY SINK

### WALL MOUNTED MARBLE LAVATORY SINK WITH PEDESTAL



STYLES			
AUCP07 [SHOWN]	AUCP19	CACP10 [SHOWN]	CACP22
CNCPO8 [SHOWN]		CNCP20	



STYLES			
DOCP12 [SHOWN]	DOCP24	MBCP09 [SHOWN]	MBCP21

#### WARNING:

- This product is extremely heavy. It is STRONGLY recommended that 2 or more persons install this product.
- If no blocking has been installed STOP this installation until structural blocking is available.
- This installation and hardware is for wood stud installation ONLY.
- Ensure the blocking is able to hold up to 300 lbs.
- For metal studs, additional wood blocking must be installed.

#### IMPORTANT:

- To ensure this product is installed properly, you must read and follow these guidelines.
- The owner/user of this product must keep this information for future reference.
- This product must be installed by a professional licensed contractor.
- Be sure your installation conforms to federal, state, and local codes. In the State of Massachusetts, all installations must comply with the rules and regulations set forth within 248 CMR.
- Inspect this product to ensure you have all the parts required for proper installation.
- Product is **sold partially** assembled but shown fully disassembled for illustrative and service purposes only.
- **CAUTION:** Use only a strap wrench or protected/smooth-jaw wrench on ANY finished surface.
- The use of certain plumber putty and silicone may stain stone or tile surfaces.
- **CAUTION:** Take caution when applying the silicone and only use the necessary amount to ensure it won't cause staining.
- Use painter's tape to ensure a clean application.
- If further assistance is required, please contact Product Support at 1-800-927-2120 Monday through Friday, 8am - 6pm EST.

#### SUGGESTED HARDWARE:

STYLE	SIZE	DESCRIPTION
106801	18" [456mm] [AUCP07, AUCP19, CACP10, CACP22, CNCPO8, CNCP20]	Universal Pair (L/R) Stainless Steel ADJUSTABLE Concealed Support Brackets, Wall Support Brackets and Hardware for Wall Mounted Stone Sink.
106802	14" [356mm] [DOCP12, DOCP24, MBCP09, MBCP21]	

#### TECHNICAL DETAILS:

DETAIL	SPECIFICATION		
DRAIN HOLE DEPTH	1-7/16" [49mm]		
DRAIN HOLE DIAMETER	Ø1-3/4" [44mm]		
FITTING HOLE DIAMETER	Ø1-3/8" [35mm]		
OVERFLOW OPENING	YES		
ROUGH-IN WASTE HEIGHT	18" [457mm] RECOMMENDED		
WEIGHT	AUCP07 290lbs [132kg]	AUCP19 260lbs [118kg]	CACP10 350lbs [159kg]
	CACP22 305lbs [138kg]	CNCPO8 270lbs [122kg]	CNCP20 245lbs [111kg]
	DOCP12 250lbs [113kg]	DOCP24 230lbs [104kg]	MBCP09 325lbs [147kg]
	MBCP21 - 285lbs [129kg]		

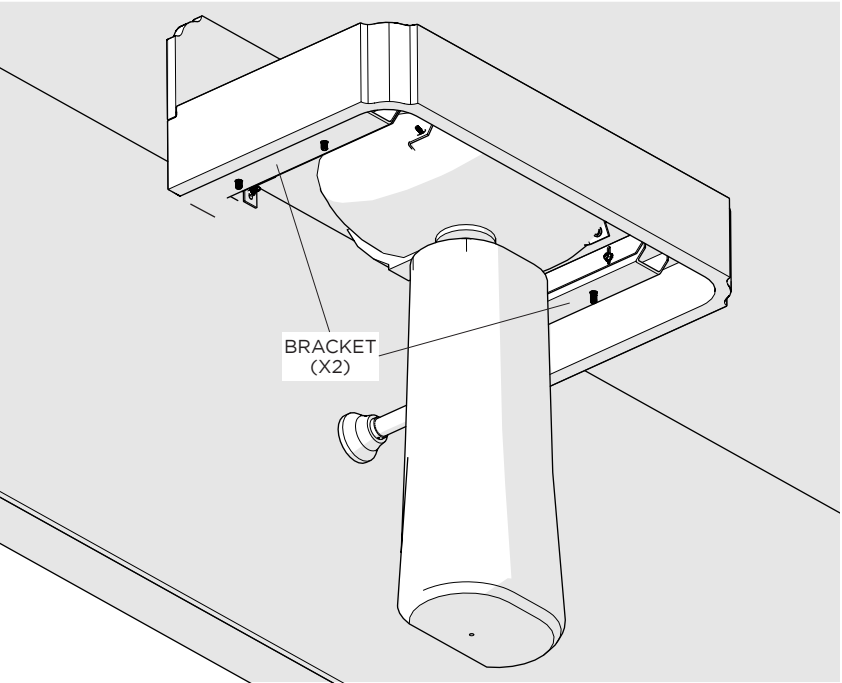
# INSTALLATION GUIDELINES

## LAVATORY SINK

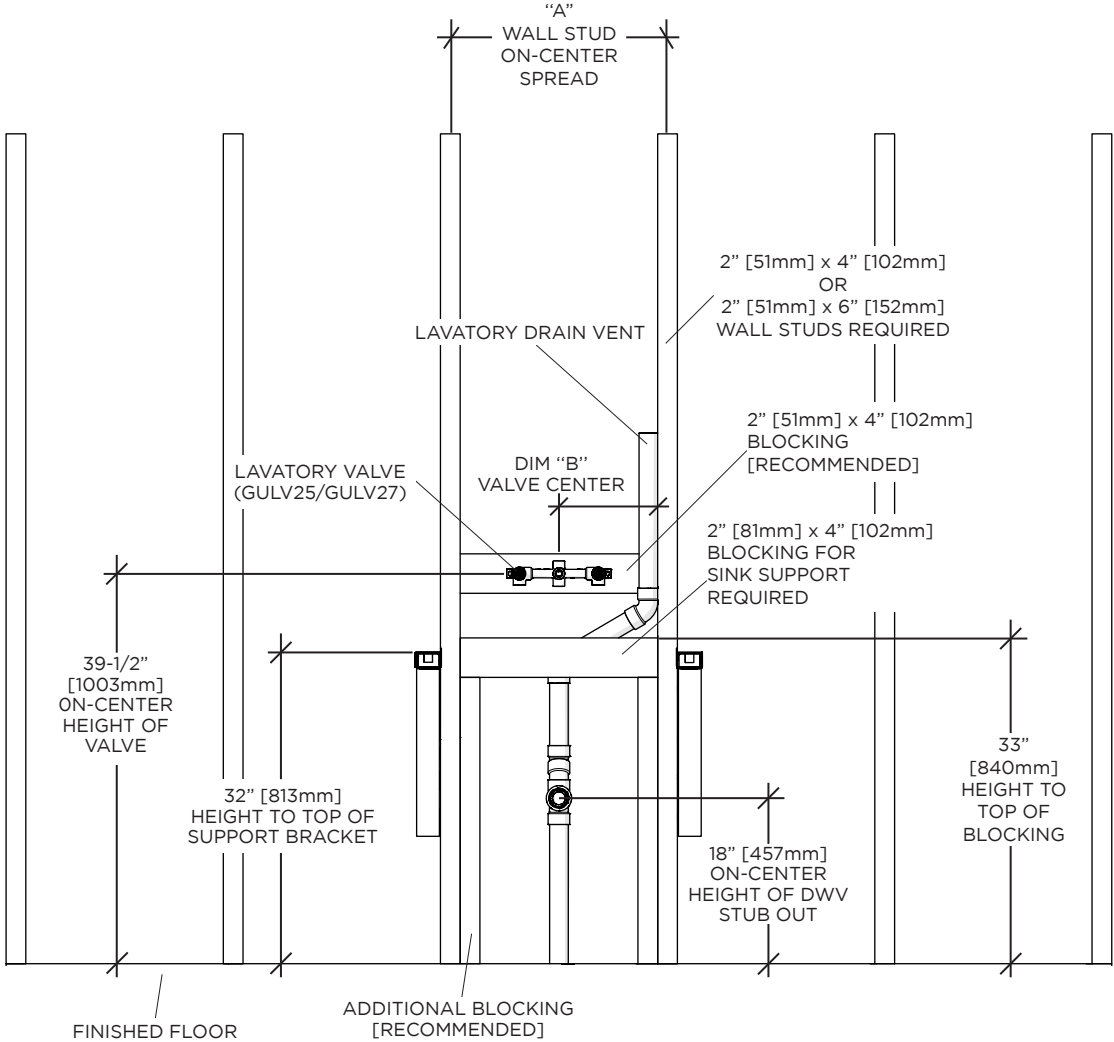
### ROUGH IN:

- 2" [50mm] x 4" [107mm] blocking to secure the SINK to the wall is required.
- Jack or Trimmer Studs are required to properly install the SUPPORT and ANGLE BRACKETS and to secure the SINK to the wall.
- Ensure that the lavatory drain vent piping is properly installed according to applicable building codes and does not interfere with the stud or blocking materials.
- SUPPORT BRACKETS must be installed directly onto wall studs and prior to the installation of the finished wall.
- The dimensions shown detail a 34" [864mm] SINK height installation.
- LAVATORY VALVE and associated TRIM **sold separately**.

### BRACKET LOCATION:



**NOTE:** The SINK will be supported by the brackets and not the PEDESTAL. Ensure the SINK is not resting on the PEDESTAL to avoid damage.



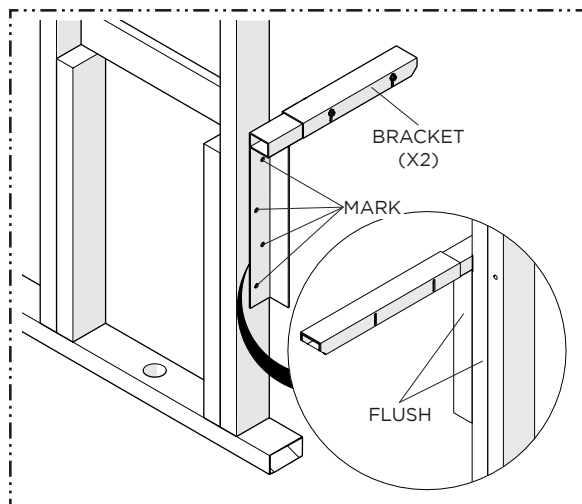
**NOTE:** This blocking scheme installs the sink top 34" [864mm] from the floor.

STYLE	DIM "A"	DIM "B"
AUCP07, CACP10, CNCP08, DOCP12, MBCP09	24" [610mm]	11" [279mm]
AUCP19, CACP22, DOCP24, MBCP21	20" [508mm]	9" [229mm]
CNCP20	18" [457mm]	8" [203mm]

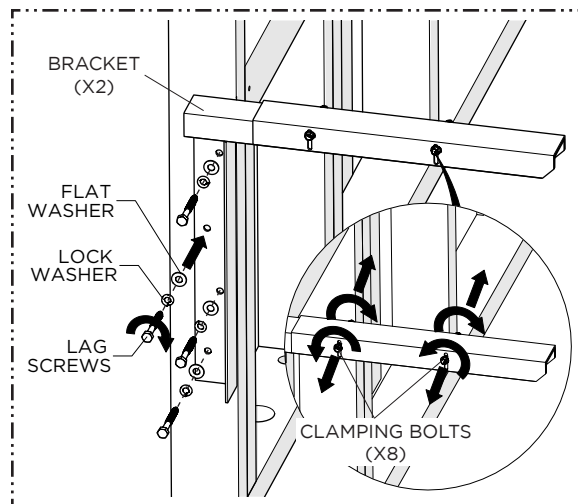
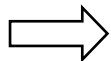
# INSTALLATION GUIDELINES

## LAVATORY SINK

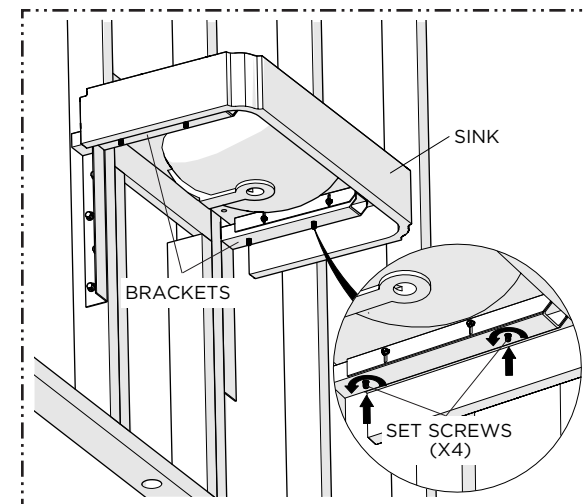
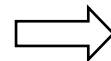
# WATERWORKS



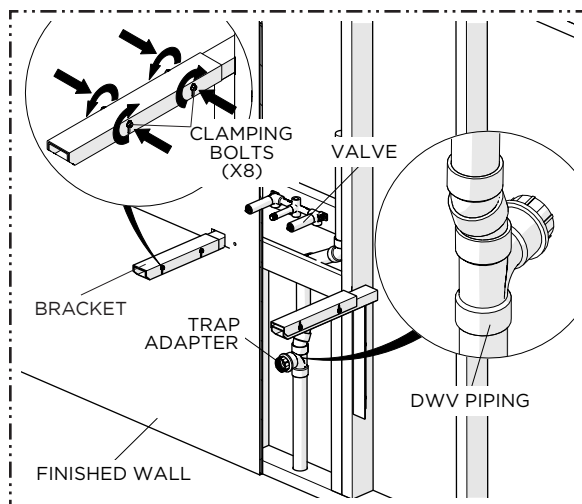
1. Dry fit the BRACKETS to the WALL STUD and mark the location of the mounting holes. Make sure to hold the BRACKETS level and flush with the front face of the STUD. Drill pilot holes for the 3/8" [10mm] LAG SCREWS provided.



2. Install both BRACKETS with the provided LAG SCREWS and WASHERS, ensuring they are securely attached. Once installed, loosen the CLAMPING BOLTS on each bracket, but do **not** remove them.

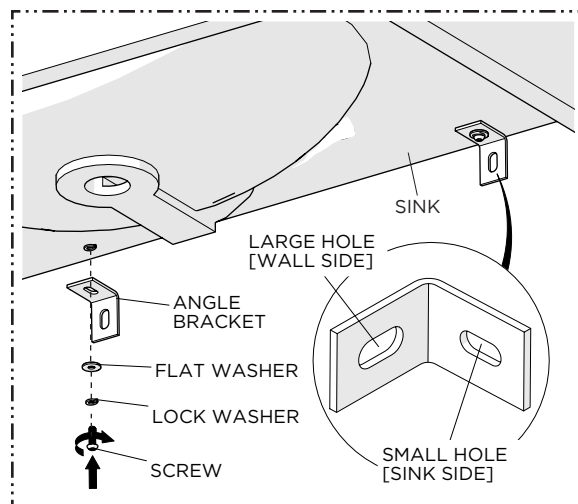
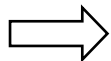


3. Dry-fit the SINK onto the BRACKETS and level it by adjusting the SET SCREWS at the bottom of each BRACKET. Ensure the SINK'S weight is properly supported on the BRACKETS. Once aligned, remove the SINK and store it safely until the final installation.



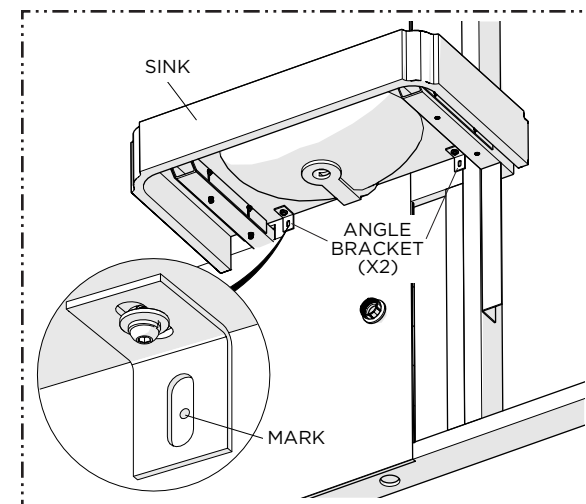
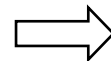
4. Once the level is set, tighten the CLAMPING BOLTS on both BRACKETS to secure the level. Ensure the PLUMBING SUPPLY and TRAP ADAPTER are properly installed before completing the FINISHED WALL installation.

**NOTE:** The thickness of the FINISHED WALL should not exceed 1" [25mm].



5. Install the ANGLE BRACKET to the underside of the SINK using the SCREWS and WASHERS PROVIDED. Do **NOT** tighten the SCREWS.

**NOTE:** Make sure to use the sink side of the BRACKET.

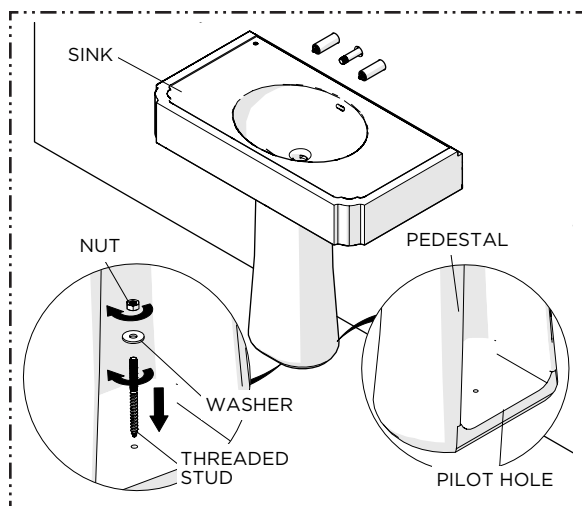


6. Dry fit the SINK with SUPPORT BRACKETS ensuring it is level. Mark the hole locations for the ANGLE BRACKETS then remove the SINK and drill pilot holes for M8 THREADED STUDS.

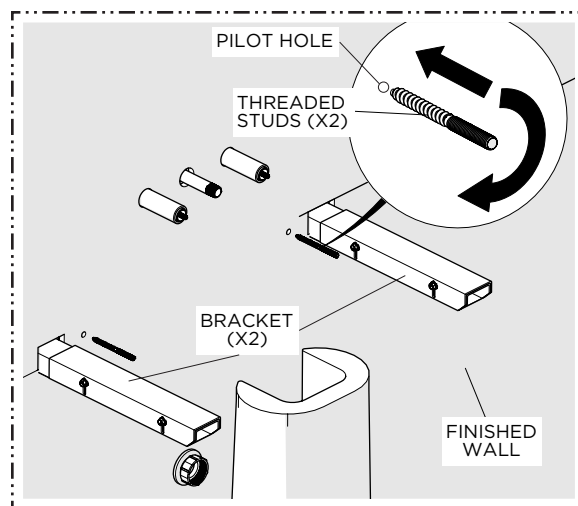
# INSTALLATION GUIDELINES

## LAVATORY SINK

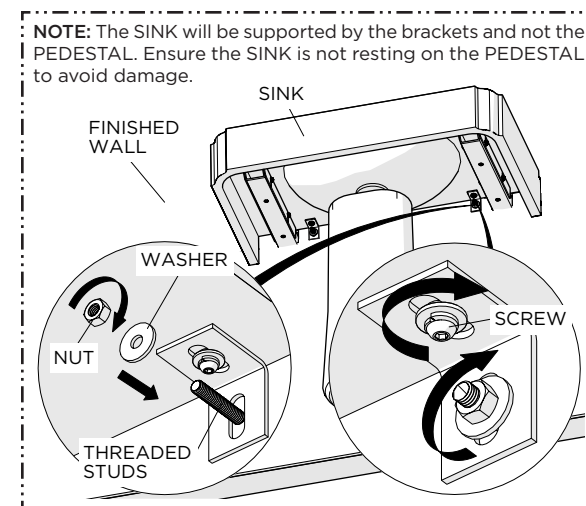
# WATERWORKS



7. Dry fit the PEDESTAL to fit in front of the drain hole of the SINK. Mark where the hole is, drill, and secure the position using THREADED STUD, WASHER, and NUT.

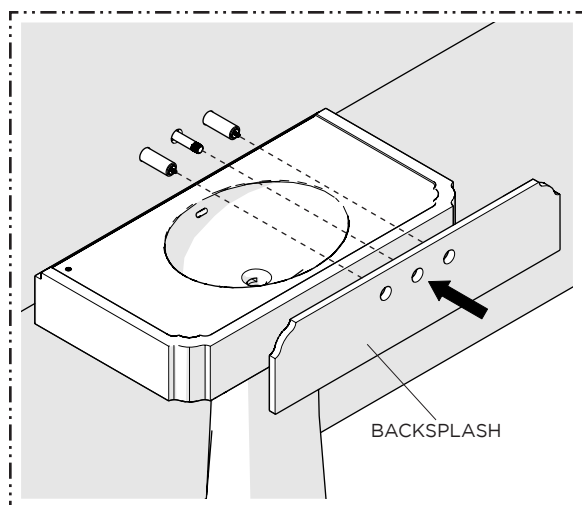


8. Install the M8 THREADED STUDS making sure the wood end is fully inserted into the FINISHED WALL, then apply adhesive silicone to the top surfaces of the SUPPORT BRACKETS.



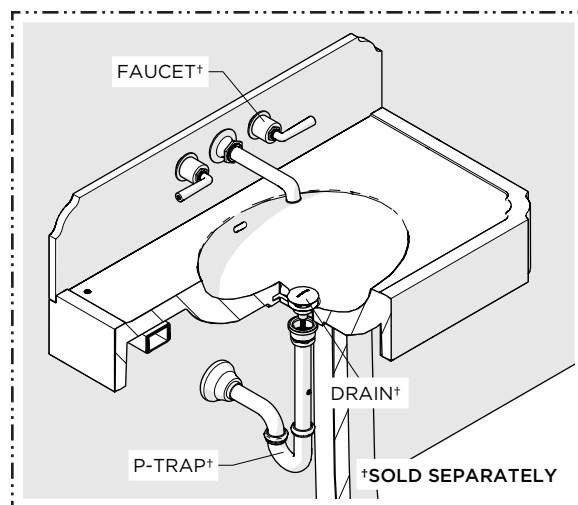
**NOTE:** The SINK will be supported by the brackets and not the PEDESTAL. Ensure the SINK is not resting on the PEDESTAL to avoid damage.

9. Place the SINK on BRACKETS against the FINISHED WALL. Install WASHERS and NUTS on THREADED STUDS and hand-tighten. Cut excess from STUDS, then securely tighten NUTS and SCREWS on ANGLE BRACKETS.



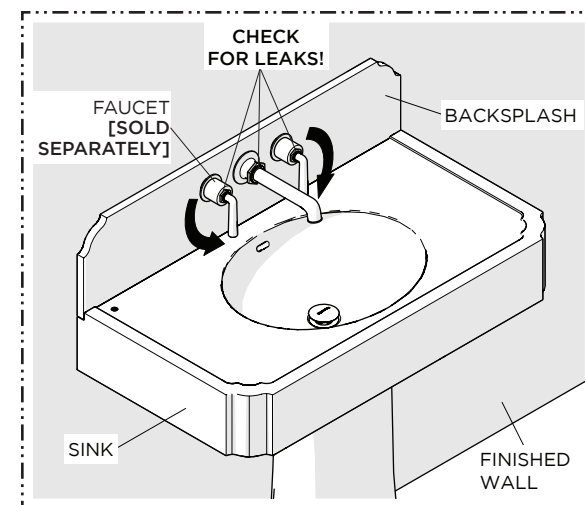
10. Install the BACKSPLASH provided using an adhesive silicone.

**NOTE:** STYLE No. CNCPO8 and CNCPO20 do **not** have a BACKSPLASH. Remove all thread and pipe nipple before BACKSPLASH installation.



11. Install the FAUCET, DRAIN and P-TRAP [sold separately].

**NOTE:** The use of certain plumber's putty may stain stone or tile surfaces.



12. Turn on the water and operate the drain and FAUCET [sold separately] to ensure proper operation. Check all connections for **leaks**. If desired, a bead of caulk or clear silicone may be applied where the SINK contacts the FINISHED WALL.