

WATT

WLLT01

Watt Wall Mounted Single Arm Sconce with Plain Glass Shade



SHOWN IN WATT WALL MOUNTED SINGLE ARM SCONCE WITH PLAIN GLASS SHADE | WLLT01

INSPIRATION

Inspired by the countless shapes and colors of telephone pole insulator covers, the Watt collection features two styles of large scale boron molded glass shades in clear, amber or blue. The Watt II collection features a smaller scale molded glass shade available in clear. They are an original interpretation of a vintage form and available in sconces or pendants.

PRODUCT FEATURES

Solid brass and boron molded glass

Proprietary design

Uses (1) 75W Max Edison Filament Style, E26 Base Bulb (not included)

TECHNICAL DETAILS

Ambient Task: Ambient
Bulb Base Size: E26
Bulb Type: Edison
Depth/Width: 6 7/16"
Escutcheon Primary Material: Brass
Height: 13 3/8"
Installation Type: Wall Mounted
Interior Exterior Application: Interior Only
Junction Box Orientation: Any
Length: 5 5/8"
Number Of Bulbs: One
Primary Material: Made of Brass
Safety Warnings: Do not exceed max wattage (75).
Shade Material: Glass
Suggested Application: All Applications
Voltage: 120V
Wet/Dry: Damp or Dry

CODES & STANDARDS

UL and CUL

CERTIFICATIONS



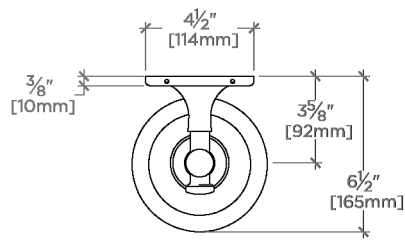
PRODUCT (NOTES)

Replacement Plain Glass Shade Style #999156.
Replacement Ribbed Glass Shade Style #999157.
Replacement Knob for Wall Plate (Nickel, Unlacquered Brass, Old Bronze) Style #998703.

WATT

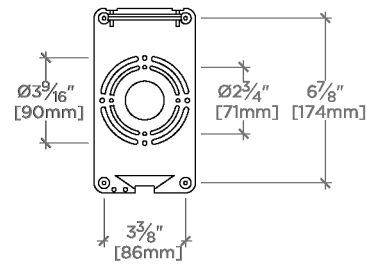
WLLT01

Watt Wall Mounted Single Arm Sconce with Plain Glass Shade



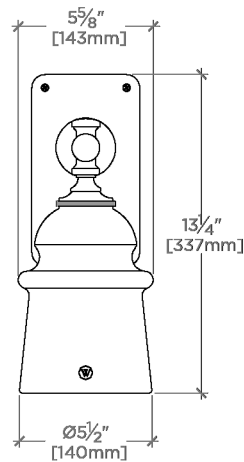
TOP VIEW

SCALE: 1 1/2" = 1'-0"



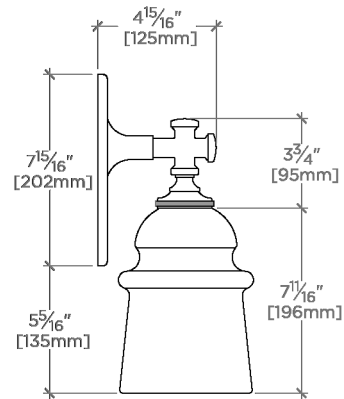
MOUNTING PLATE

SCALE: 1 1/2" = 1'-0"



FRONT VIEW

SCALE: 1 1/2" = 1'-0"



SIDE VIEW

SCALE: 1 1/2" = 1'-0"