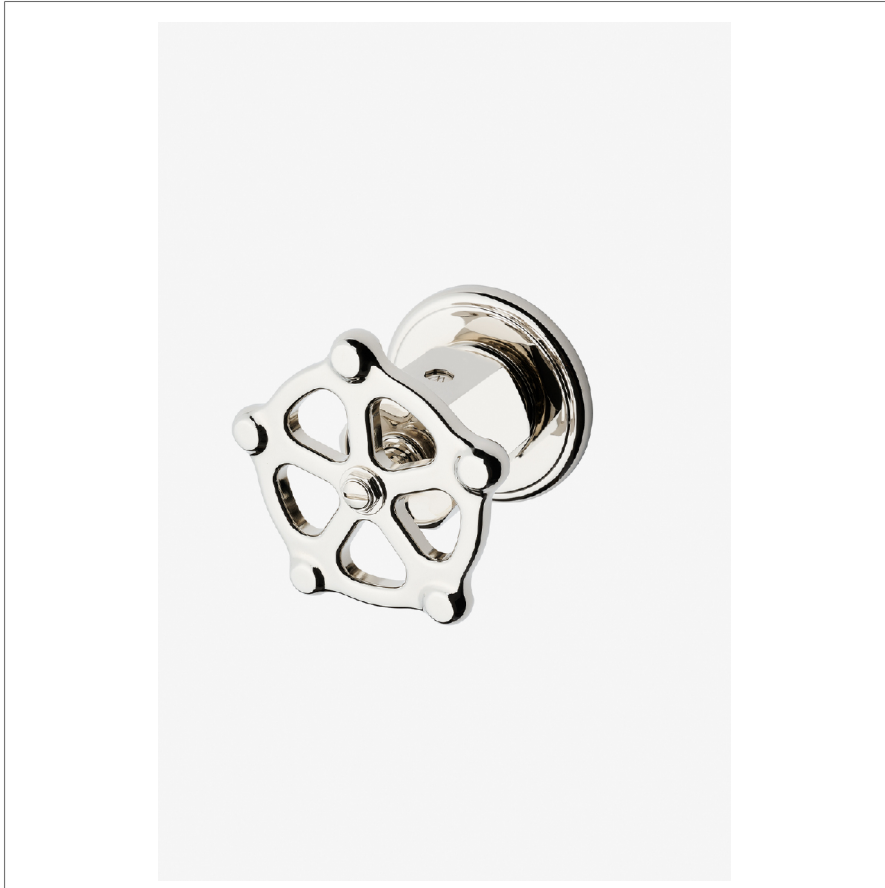


REGULATOR

RGVC02

Regulator Volume Control with Wheel Handle



SHOWN IN REGULATOR VOLUME CONTROL WITH WHEEL HANDLE | RGVC02

TECHNICAL DETAILS

ADA Compliance: No
Depth/Width: 3 1/16"
Escutcheon Primary Material: Brass
Fittings Hole Diameter: 1 3/8"
Handle Turn Angle: Quarter Turn
Height: 3 1/8"
Integrated Diverter: N
Integrated Spray: N
Length: 3 1/8"
Primary Material: Brass
Suggested Application: Bath
Water Pressure Maximum: 85.0 psi
Water Pressure Minimum: 20.0 psi
Water Pressure Recommended: 45.0 psi

INSPIRATION

A play on industrial controls from the early 1900s, when pride was lavished on parts. Translated to handcrafted, fittings project rugged beauty through powerful, detailed shapes.

CODES & STANDARDS

ASME A112.18.1/CSA B125.1, State of MA

PRODUCT FEATURES

Wheel Handle

Used to control water flow to a single waterway outlet

Stocked in Nickel and Brass

Requires Rough Valve, Sold Separately: GUV18/GUV19 or GUV16 /GUV17

CERTIFICATIONS

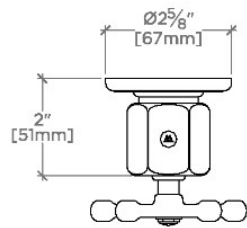


PRODUCT (NOTES)

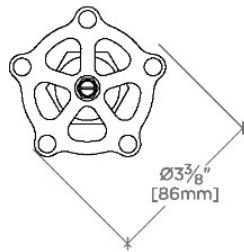
REGULATOR

RGVC02

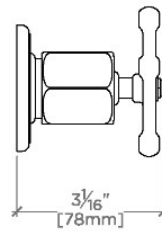
Regulator Volume Control with Wheel Handle



TOP VIEW SCALE: 3"=1'-0"



FRONT VIEW SCALE: 3"=1'-0"



SIDE VIEW SCALE: 3"=1'-0"