

Cushing

Cushing 3" Pull

CHHW03



SHOWN IN CUSHING 3" PULL | CHHW03

TECHNICAL DETAILS

Height: 35 mm
Length: 76 mm
Primary Material: Brass

INSPIRATION

Modern interpretations of early 20th-century machinery handles, these t-pulls and knobs combine industrial strength with sculptural presence. Available in an extensive range of sizes to suit any application.

CODES & STANDARDS

PRODUCT FEATURES

Solid Brass

Machined and hand-polished

Made in Portugal

Includes 1 x M4 Pan Head Slot 1" Machine Screw and 1 x M4 Pan Head Slot 1 1/2" Machine Screw

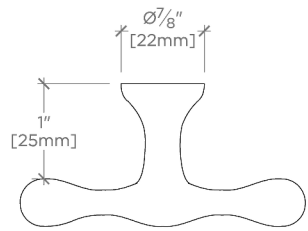
CERTIFICATIONS

Replacement Screws available
PRODUCT (NOTES)

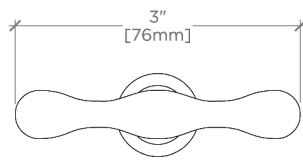
Cushing

CHHW03

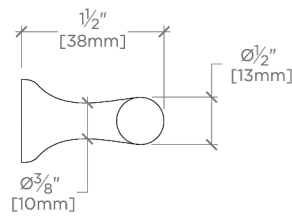
Cushing 3" Pull



TOP VIEW SCALE: 6"=1'-0"



FRONT VIEW SCALE: 6"=1'-0"



SIDE VIEW SCALE: 6"=1'-0"