

ViaWorks

GU27LV

ViaWorks 1/2" Lavatory Wall Mounted Valve (used with Cross or Wheel Handle Lavatory Faucets)



SHOWN IN VIAWORKS 1/2" LAVATORY WALL MOUNTED VALVE (USED WITH CROSS OR WHEEL HANDLE LAVATORY FAUCETS) | GU27LV

TECHNICAL DETAILS

ADA Compliance: When installed per ADA guidelines
 Depth/Width: 152 mm
 Fittings Hole Diameter: 35 mm
 Handle Spread Maximum: 203 mm
 Handle Spread Minimum: 203 mm
 Handle Turn Angle: Quarter Turn
 Height: 70 mm
 Inlet Connection Size: 1/2"
 Inlet Connection Type: Female G/BSPP
 Installation Type: Wall Mounted
 Length: 254 mm
 Outlet Connection Size: 1/2"
 Outlet Connection Type: Female G/BSPP
 Primary Material: Brass
 Suggested Application: Bath
 Valve Material: Ceramic
 Water Pressure Maximum: 6.0 bar
 Water Pressure Minimum: 1.5 bar
 Water Pressure Recommended: 3.0 bar

INSPIRATION

The ViaWorks collection encompasses all Waterworks valves, which are just as impeccably engineered as our legendary fittings and the finest the industry has to offer in terms of performance, features and functionality. ViaWorks valves are engineered with more than three generations of bath and kitchen expertise, each with installers and lifelong service in mind.

CODES & STANDARDS

Code # : ASME A112.18.1 / CSA B125.1, State of MA, UL

PRODUCT FEATURES

This counter-clockwise open and clockwise open cartridge rough is for use with Waterworks cross or wheel wall mounted faucets

1/2" NPT male inlet and 1/2" NPT female outlet, with quarter turn functionality

6 gpm (gallons per minute) unrestricted maximum flow at 60 psi

Provides convenience of a Wall Mount lavatory installation

Made in Europe of Brass Construction

CERTIFICATIONS

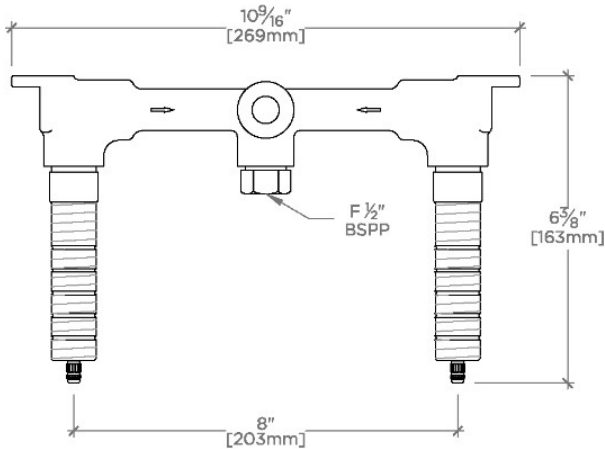
PRODUCT (NOTES)

ViaWorks

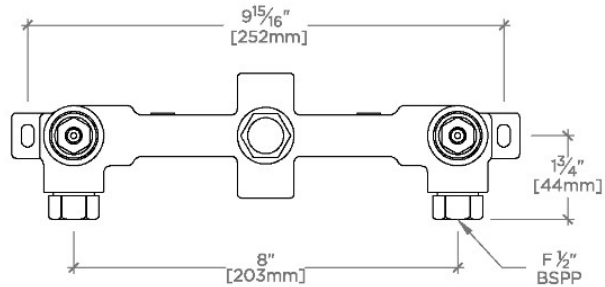
GU27LV

ViaWorks 1/2" Lavatory Wall Mounted Valve (used with Cross or Wheel Handle Lavatory Faucets)

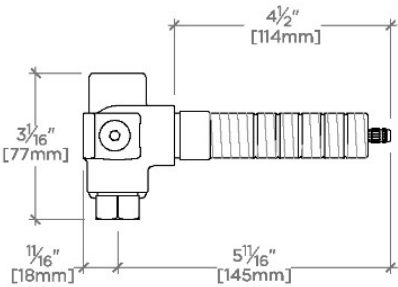
ADAPTER(S) PACKAGED SEPARATELY		
ADAPTER	DESCRIPTION	QTY
UNUK02	½" MALE NPT x ½" FEMALE BSPP ADAPTER	3



TOP VIEW SCALE: 3"=1'-0"



FRONT VIEW SCALE: 3"=1'-0"



SIDE VIEW SCALE: 3"=1'-0"