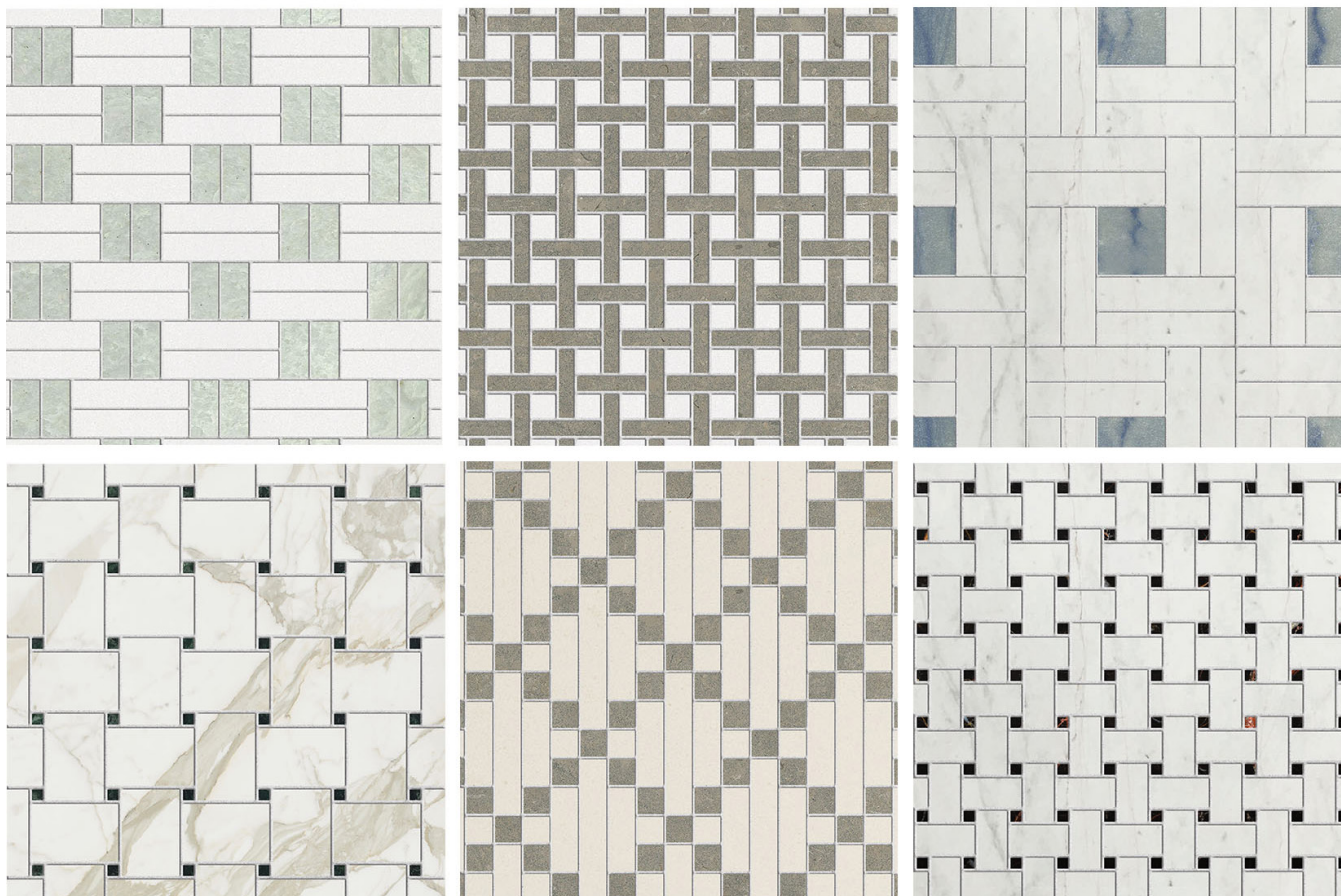




ESTB. 1978

WATERWORKS

Luminaire



Meticulously cut, these hand-assembled mosaics come in a range of styles and color blends, bringing graphic shapes and consistent, mesmerizing patterns to walls and floors. Flexible options within the Luminaire program invite confident design decisions, making it easy for professionals and homeowners to add value and artistry to any space.

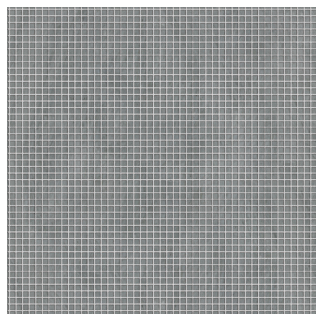


ESTB. 1978

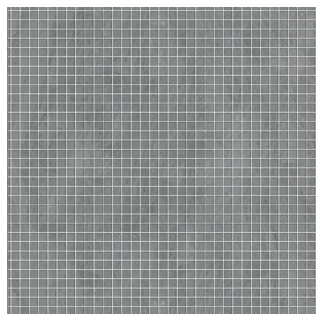
WATERWORKS

Luminaire

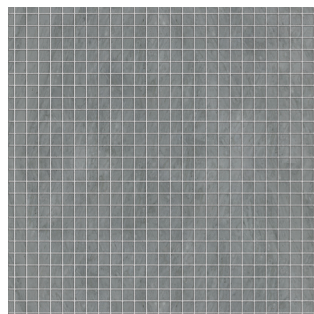
STANDARD MOSAIC



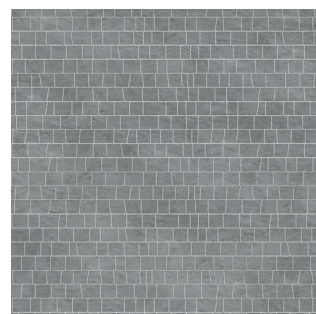
1cm Stacked



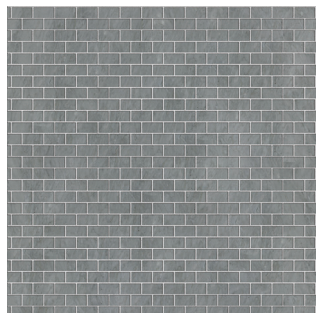
1.5cm Stacked*



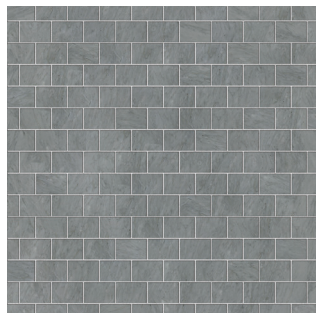
2cm Stacked*



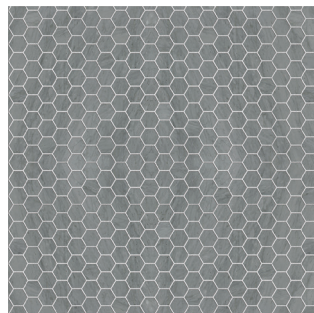
2cm Hand Clipped



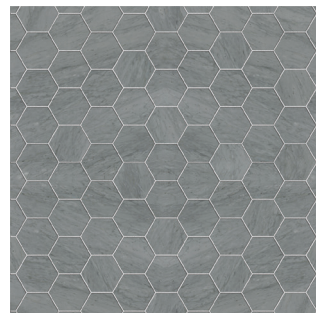
2cm x 4cm
Staggered Brick**



4cm x 6cm
Staggered Brick**



3cm Hexagon



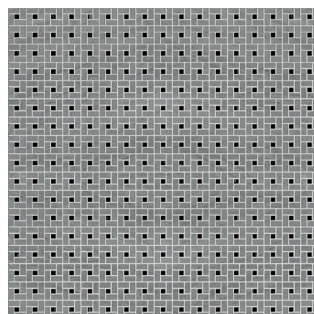
7cm Hexagon



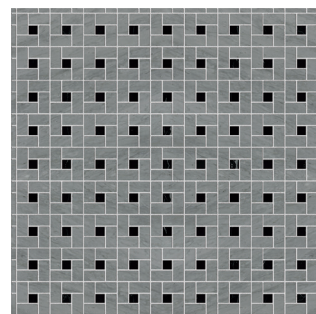
2cm x 4cm
Herringbone



4cm x 6cm
Herringbone



1cm x 2cm
Arc D' Midi



2cm x 4cm
Arc D' Midi

Photos are representative of color and shown as a 24" x 24" area. Please request samples, natural variation can occur.

* Available in Staggered

**Available in Stacked

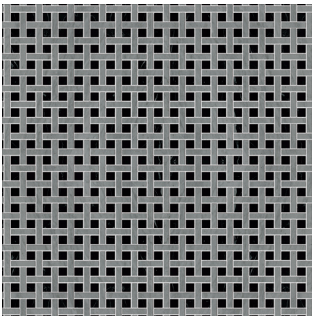


ESTB. 1978

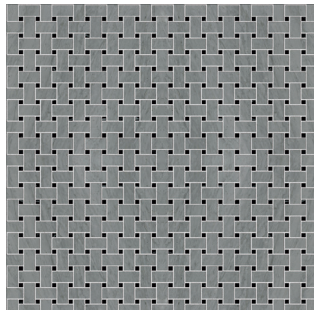
W A T E R W O R K S

Luminaire

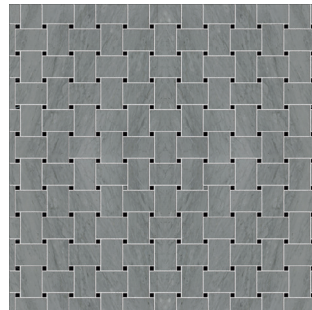
STANDARD MOSAIC



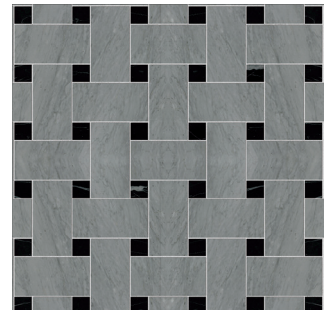
1cm x 5cm
Basketweave



2cm x 4cm
Basketweave



4cm x 6cm
Basketweave



7.5cm x 15cm
Basketweave

Photos are representative of color and shown as a 24" x 24" area. Please request samples, natural variation can occur.



ESTB. 1978

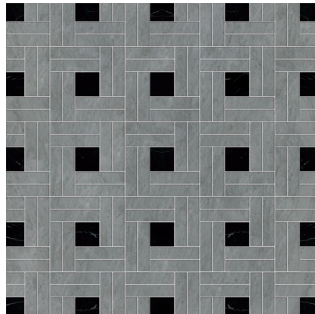
WATERWORKS

Luminaire

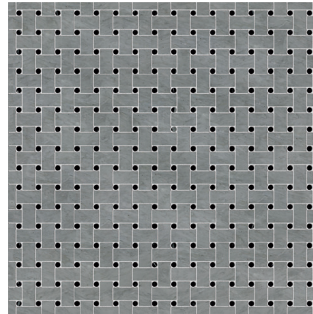
DECORATIVE MOSAIC



Arrow



Barweave



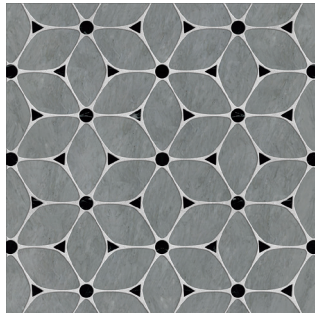
Basketdot



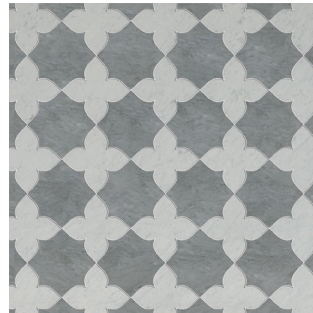
Bolton



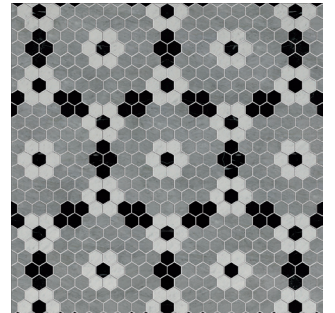
Buckle



Cellular



Clover



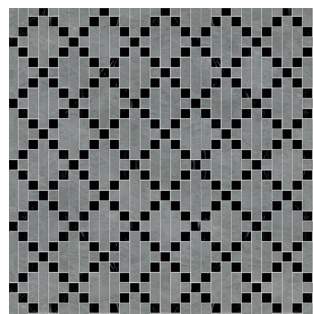
Cosmo



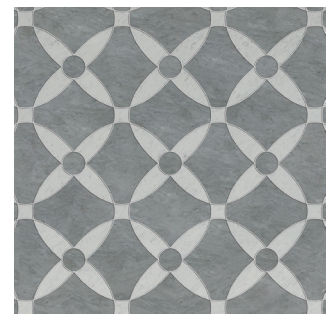
Crawley



Crosshatch



Crossweave



Daisy

Photos are representative of color and shown as a 24" x 24" area. Please request samples, natural variation can occur.

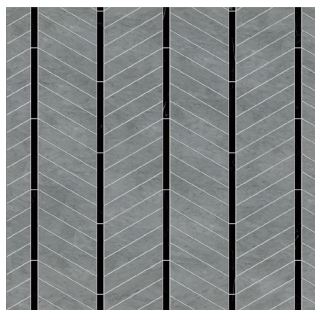


ESTB. 1978

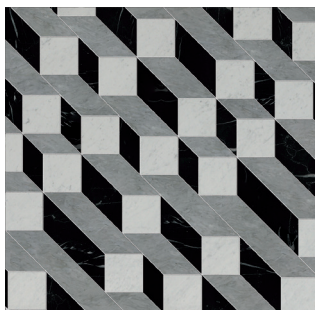
WATERWORKS

Luminaire

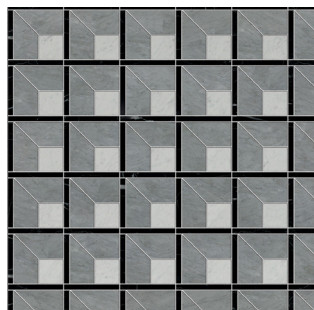
DECORATIVE MOSAIC



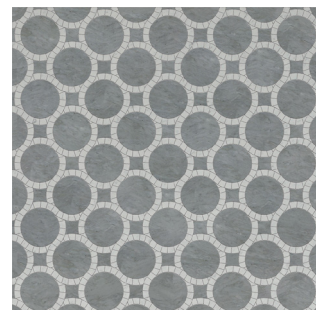
Dart



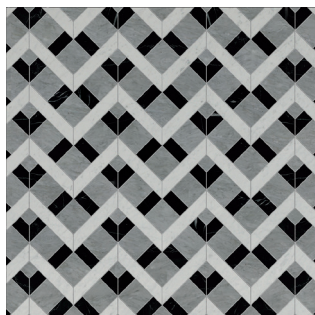
Derby



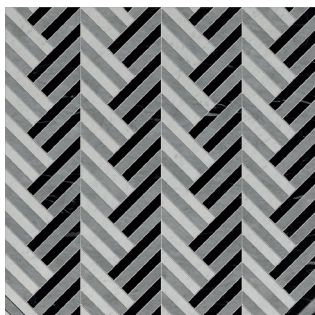
Dobby



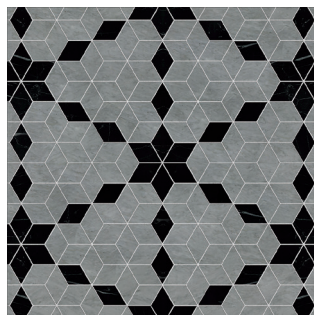
Flow



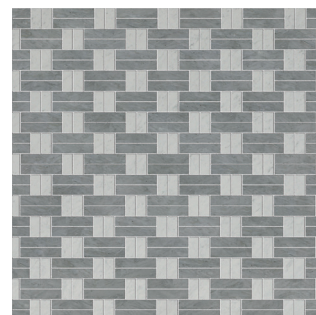
Leno



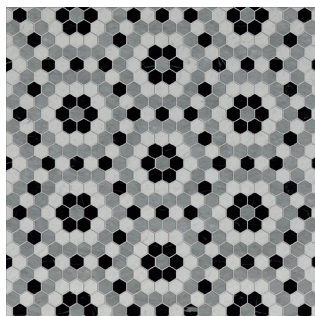
Marker



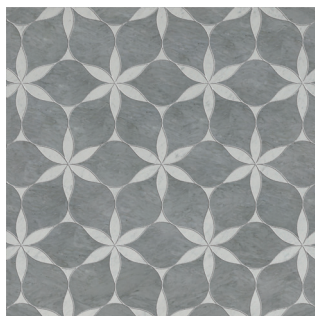
Morning Star



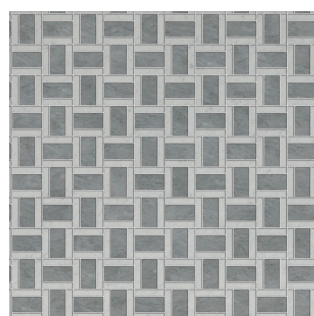
Oxford



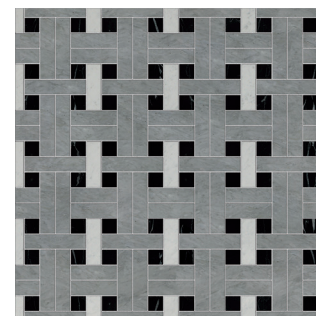
Penny Quilt



Petals



Pinpoint



Plainweave

Photos are representative of color and shown as a 24" x 24" area. Please request samples, natural variation can occur.

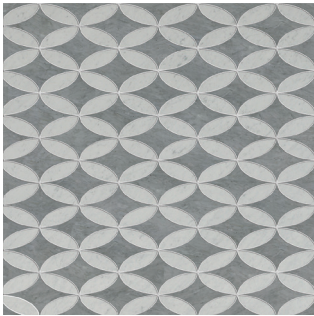


ESTB. 1978

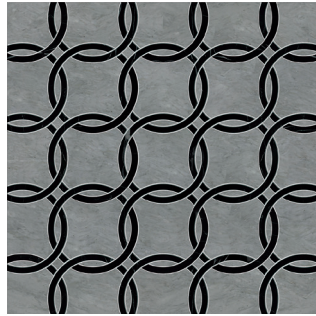
WATERWORKS

Luminaire

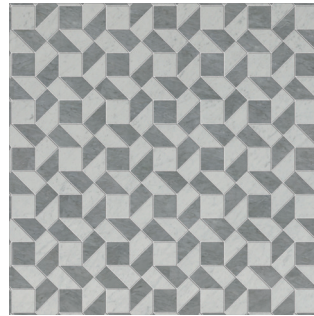
DECORATIVE MOSAIC



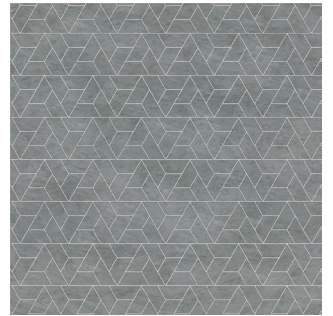
Retro



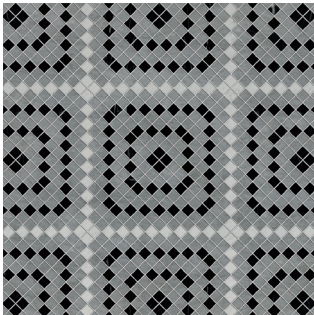
Rings



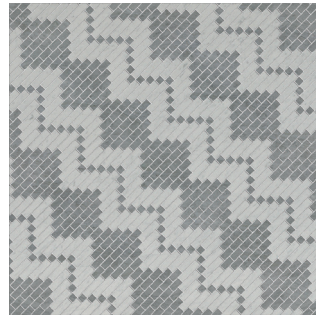
Royal



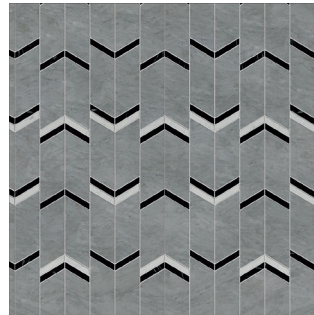
Rubric



Sawtooth



Twill



V-Groove



Windmill

Photos are representative of color and shown as a 24" x 24" area. Please request samples, natural variation can occur.



ESTB. 1978

WATERWORKS

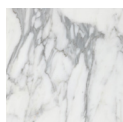
Luminaire

STONE GROUPS

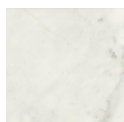
GROUP 1



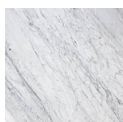
Thassos V1



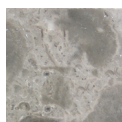
Statuary V4



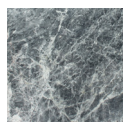
Calacatta V4



Carrara V3



Goleta
Gray V5



Silver V5



St.
Laurent V2



Obsidian V3

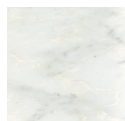


Cream
Travertine V3

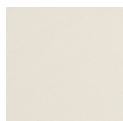


Noce V3

GROUP 2



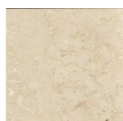
Arabescato V4
Carrara



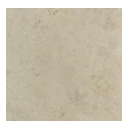
Champagne V2



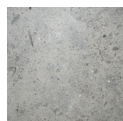
Crema
Marfil V4



Botticino V3



Jura
Gray V3



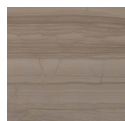
Gascogne
Blue V2



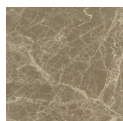
Honey
Onyx V3



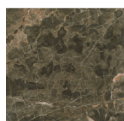
Seagrass V3



Athens
Gray V3



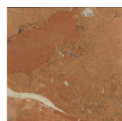
Light
Emperador V3



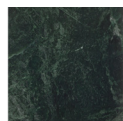
Dark
Emperador V4



Lagos
Azul V2



Rojo
Alicante V3

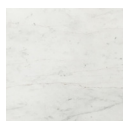


Empress
Green V3

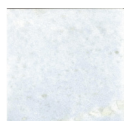
GROUP 3



Afyon
Sugar V2



Aurora V2



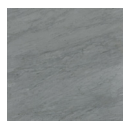
Celeste V3



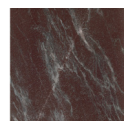
Ming
Green V3



Verde
Luna V3

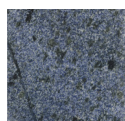


Bardiglio V3

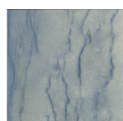


Rosso
Laguna V3

PREMIUM



Blue
Bahia V4



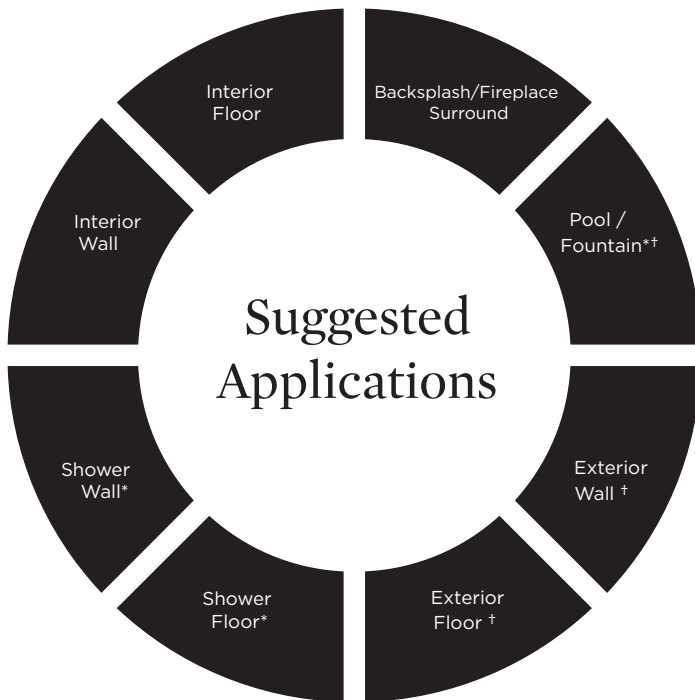
Blue
Macauba V4



ESTB. 1978

WATERWORKS

Luminaire



● Recommended Use ○ Not Recommended Use

Application Notes

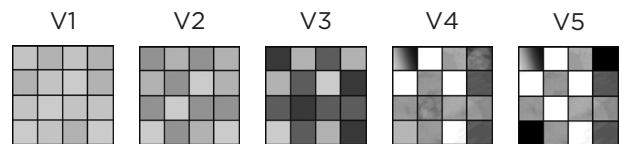
* Various stones are suitable for use in wet environments, including steam showers, if properly installed, sealed, and maintained. Please inquire.

† Some stones are suitable in tropical/subtropical climates. Testing may be required. Please inquire.

Installation / Maintenance

- WATERWORKS ASSUMES NO RESPONSIBILITY FOR INSTALLATION
- Installation constitutes acceptance.
- Mosaic should be installed by a licensed and experienced tile setter.
- Refer to TCNA (Tile Council of North America) or ANSI standards for installation guidelines.
- All mosaics must be inspected PRIOR to installation.
- Dry lay mosaics prior to installation to allow for blending of color variation.
- Stone must be sealed before grout installation to allow grout to release and prevent staining.
- Stone and grout should be sealed after installation and maintained regularly.

Variation Level



1. MINIMAL, IF ANY COLOR VARIATION
2. SLIGHT COLOR VARIATION CAN BE EXPECTED
3. A MEDIUM RANGE OF COLOR VARIATION IS TYPICAL; DARKER AND LIGHTER TONES ARE EVIDENT
4. CONSIDERABLE COLOR VARIATION IS TYPICAL; FROM DARKS TO LIGHTS AND SOME TONE CHANGES
5. EXTREME COLOR VARIATION CAN BE EXPECTED - THE RANGE IS OFTEN DIFFERING BUT COMPLEMENTARY

Thickness



*Nominal: +/- 1/8"

Suggested Grout Lines

Varies-
Please follow
mosaic sheet