

## CUSHING

CHHW03

Cushing 3" Pull



SHOWN IN CUSHING 3" PULL | CHHW03

### TECHNICAL DETAILS

Height: 1 3/8"  
Length: 3"  
Primary Material: Brass

### INSPIRATION

Modern interpretations of early 20th-century machinery handles, these t-pulls and knobs combine industrial strength with sculptural presence. Available in an extensive range of sizes to suit any application.

### CODES & STANDARDS

### PRODUCT FEATURES

Solid Brass

Machined and hand-polished

Made in Portugal

Includes 1 x M4 Pan Head Slot 1" Machine Screw and 1 x M4 Pan Head Slot 1 1/2" Machine Screw

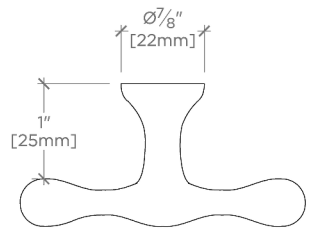
### CERTIFICATIONS

Replacement Screws available  
**PRODUCT (NOTES)**

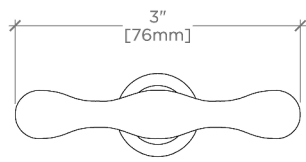
CUSHING

CHHW03

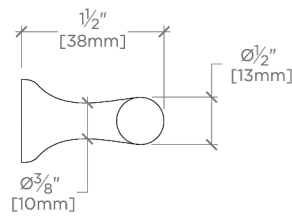
Cushing 3" Pull



TOP VIEW SCALE: 6"=1'-0"



FRONT VIEW SCALE: 6"=1'-0"



SIDE VIEW SCALE: 6"=1'-0"