

NORMANDY

NOLV33

Normandy Drop In or Undermount Oval Hammered Copper Lavatory Sink 21 5/8" x 14 9/16" x 6 7/8"



SHOWN IN NORMANDY DROP IN OR UNDERMOUNT OVAL HAMMERED COPPER LAVATORY SINK 21 5/8" X 14 9/16" X 6 7/8" | NOLV33

INSPIRATION

Like the antique French copper cookware that inspired them, our Normandy sinks lend a special warmth and richness to any environment. Each pure red copper design is hammered and polished by hand according to the old French tradition.

PRODUCT FEATURES

- Handcrafted in France from sheets of copper and formed in individual molds.
- The Normandy sinks are finished with a burnishing hammer and polished by hand.
- Suitable for master baths and powder rooms.

TECHNICAL DETAILS

ADA Compliance: When installed per ADA guidelines
 Bowl Shape: Oval
 Depth To Overflow: 4"
 Depth/Width: 14 9/16"
 Drain Hole Depth: 1.62"
 Drain Hole Diameter: 1.77"
 Drain Style: Center Drain
 Height: 6 7/8"
 Installation Type: Drop In or Undermount
 Length: 21 5/8"
 Number Of Holes: Two Hole
 Outer Rim Shape: Oval
 Overflow Opening: Yes
 Primary Material: Hammered Copper
 Suggested Application: Bath

CODES & STANDARDS

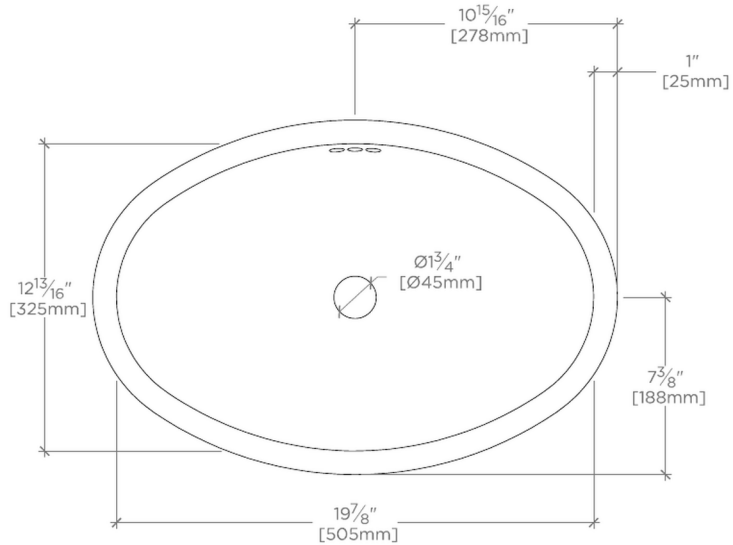
CERTIFICATIONS

Dimensions of sinks are nominal and are subject to slight variations.
PRODUCT (NOTES)

NORMANDY

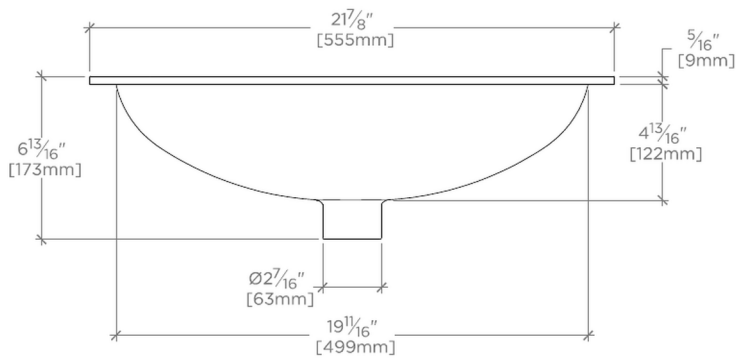
NOLV33

Normandy Drop In or Undermount Oval Hammered Copper
Lavatory Sink 21 5/8" x 14 9/16" x 6 7/8"



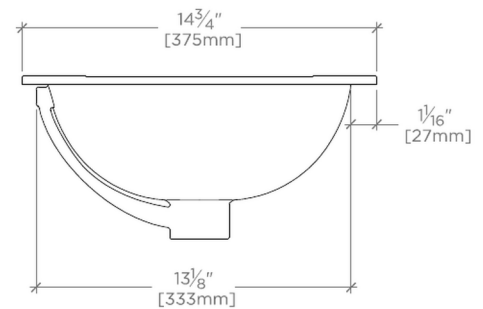
TOP VIEW

SCALE: $1\frac{1}{2}"=1'-0"$



FRONT VIEW

SCALE: $1\frac{1}{2}"=1'-0"$



SIDE VIEW

SCALE: $1\frac{1}{2}"=1'-0"$