



ESTB. 1978

WATERWORKS

Luminaire



Meticulously cut, these hand-assembled mosaics come in a range of styles and color blends, bringing graphic shapes and consistent, mesmerizing patterns to walls and floors. Flexible options within the Luminaire program invite confident design decisions, making it easy for professionals and homeowners to add value and artistry to any space.

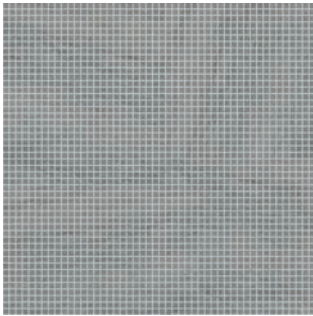


ESTB. 1978

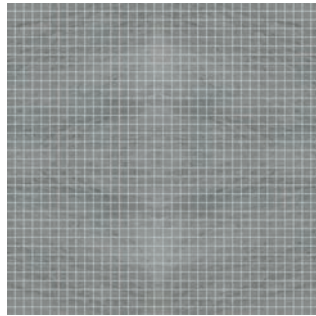
WATERWORKS

Luminaire

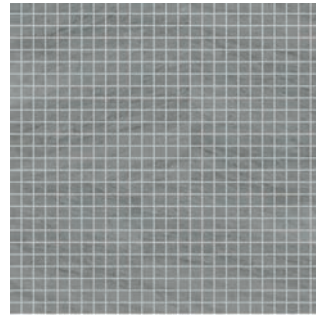
STANDARD MOSAIC



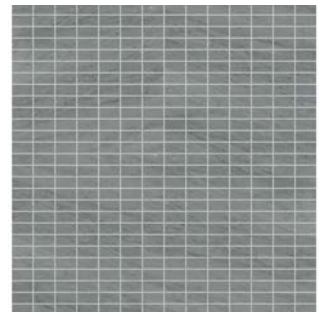
1cm STACKED
LMMS01



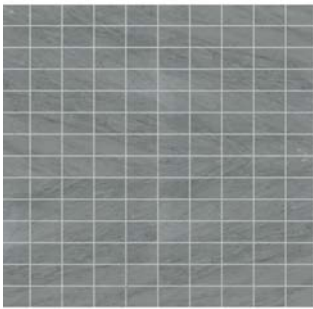
1.5cm STACKED
LMMS15



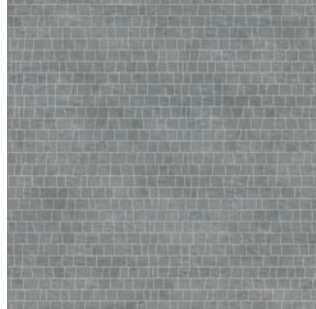
2cm STACKED
LMMS02



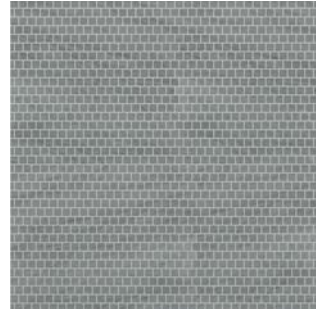
2cm X 4cm STACKED
LMMS24



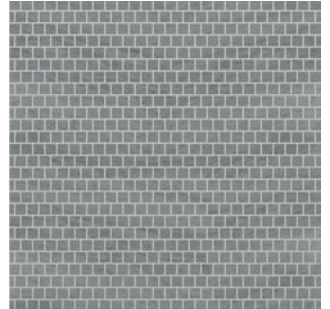
4cm X 6cm STACKED
LMMS46



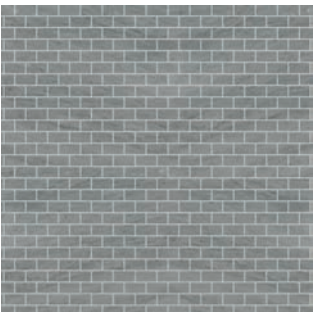
2cm HAND CLIPPED
LMMOHC



1.5cm STAGGERED
LMSM15



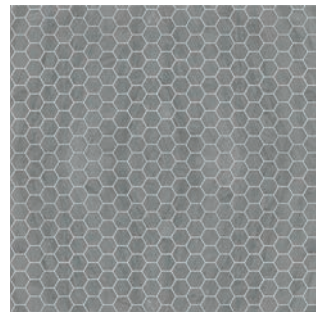
2cm STAGGERED
LMSM02



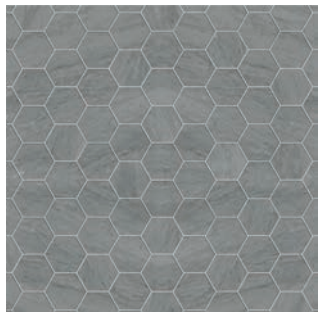
2cm X 4cm STAGGERED BRICK
LMMS24



4cm X 6cm STAGGERED BRICK
LMMS46



3cm HEXAGON
LMMOH3



7cm HEXAGON
LMMOH7

Photos are representative of color and shown as a 24" x 24" area. Please request samples, natural variation can occur.



ESTB. 1978

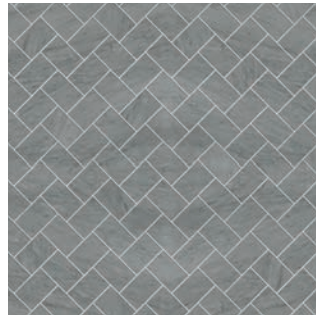
WATERWORKS

Luminaire

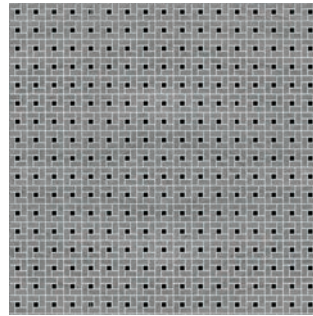
STANDARD MOSAIC



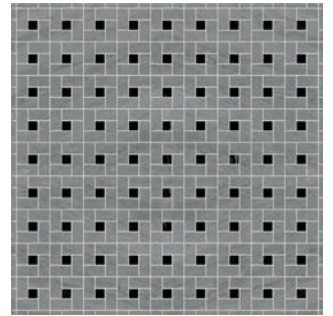
2cm X 4cm HERRINGBONE
LMMOH2



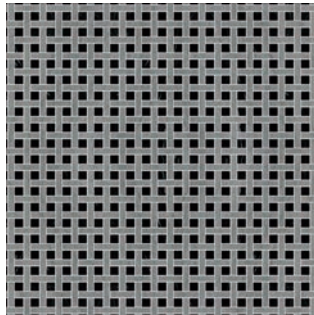
4cm X 6cm HERRINGBONE
LMMOH4



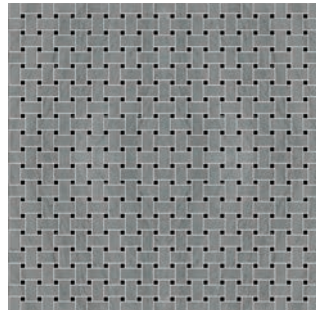
1cm X 2cm ARC D'MIDI
LMMOA2



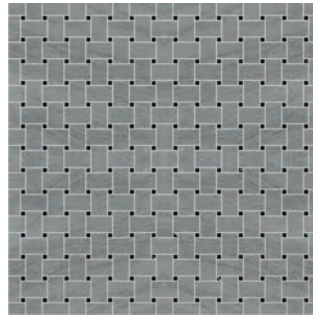
2cm X 4cm ARC D'MIDI
LMMOA1



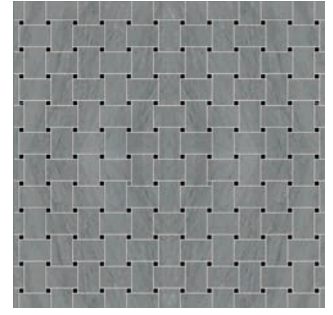
1cm X 5cm BASKETWEAVE
LMMOB1



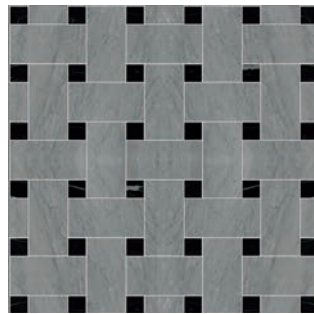
2cm X 4cm BASKETWEAVE
LMMOB2



3cm X 5cm BASKETWEAVE
LMMOB3



4cm X 6cm BASKETWEAVE
LMMOB4



7.5cm X 15cm BASKETWEAVE
LMMOB7

Photos are representative of color and shown as a 24" x 24" area. Please request samples, natural variation can occur.



ESTB. 1978

WATERWORKS

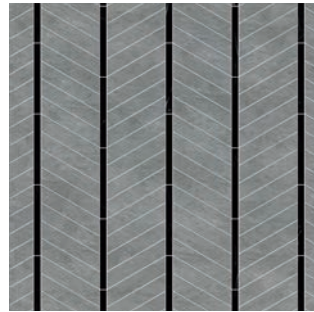
Luminaire

DECORATIVE MOSAIC

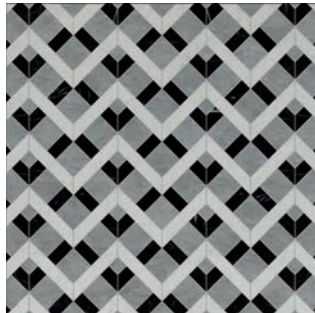
HERRINGBONE



ARROW
LMMOAR



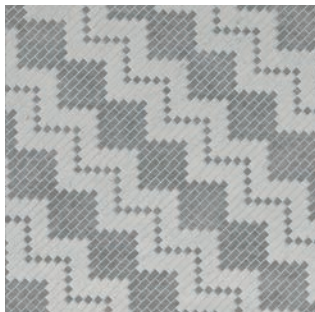
DART
LMMODA



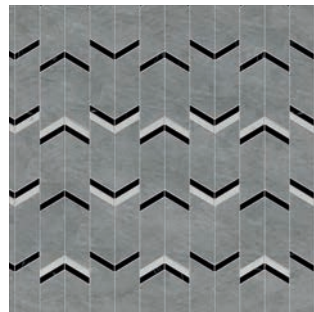
LENO
LMMOLE



MARKER
LMMOMA



TWILL
LMMOTW



V-GROOVE
LMMOVB

Photos are representative of color and shown as a 24" x 24" area. Please request samples, natural variation can occur.



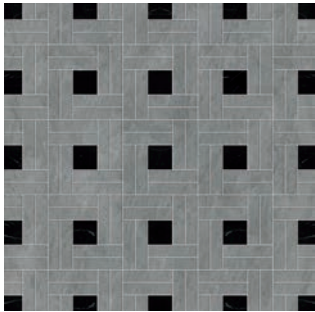
ESTB. 1978

WATERWORKS

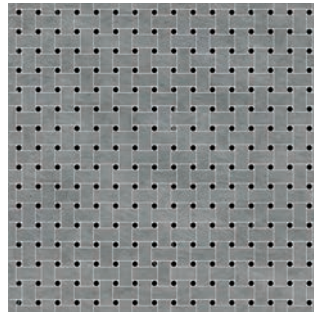
Luminaire

DECORATIVE MOSAIC

WEAVES



BARWEAVE
LMMOBW



BASKETDOT
LMMOBD



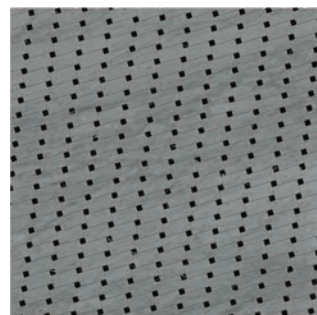
BOLTON
LMMOBO



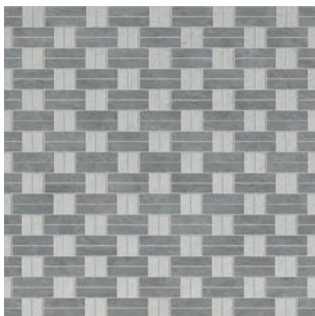
CROSSHATCH
LMMOCH



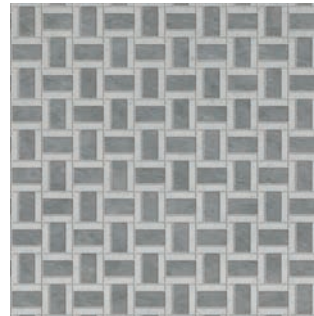
MESH
LMMOME



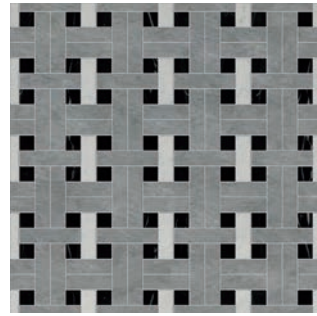
OFFSET
LMMOOS



OXFORD
LMMOOX



PINPOINT
LMMOPP



PLAINWEAVE
LMMOPW

Photos are representative of color and shown as a 24" x 24" area. Please request samples, natural variation can occur.



ESTB. 1978

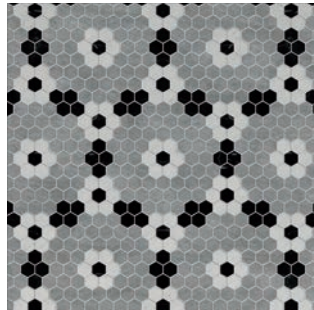
WATERWORKS

Luminaire

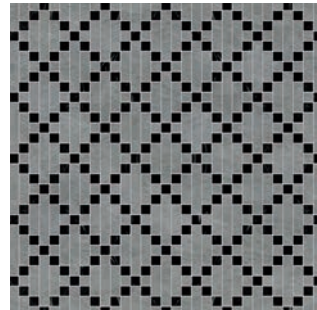
DECORATIVE MOSAIC CENTURY



CLOVER
LMMOCL



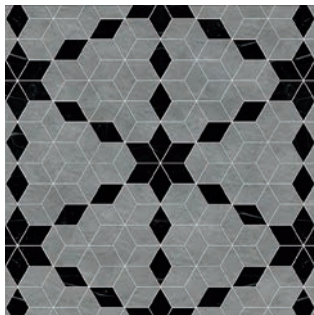
COSMO
LMMOCO



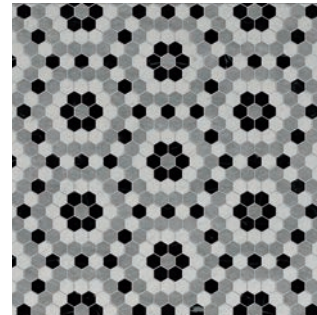
CROSSWEAVE
LMMOCW



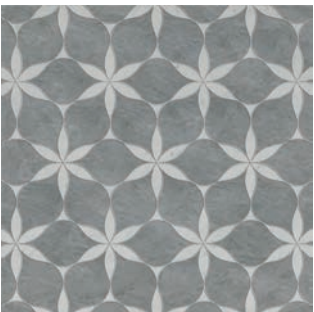
DAISY
LMMODI



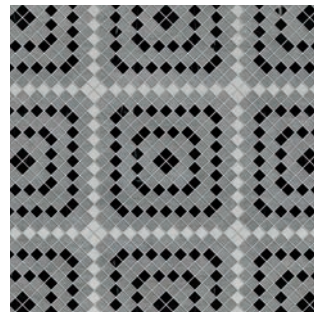
MORNING STAR
LMMOMS



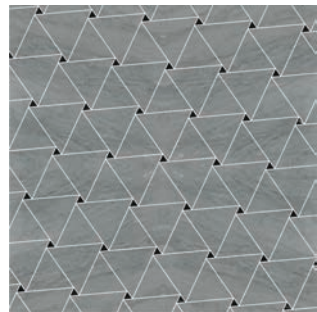
PENNY QUILT
LMMOPQ



PETALS
LMMOPE



SAWTOOTH
LMMOST



TRIANGLE QUILT
LMMOTQ

Photos are representative of color and shown as a 24" x 24" area. Please request samples, natural variation can occur.



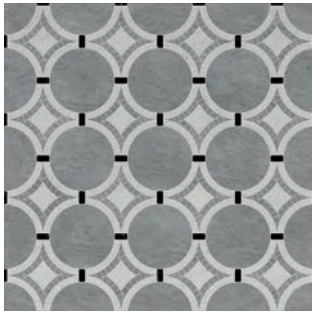
ESTB. 1978

WATERWORKS

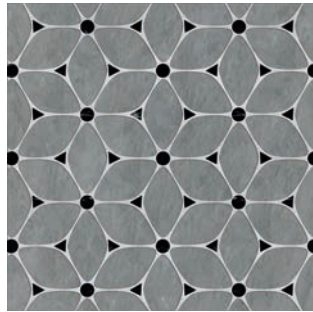
Luminaire

DECORATIVE MOSAIC

RINGLETS



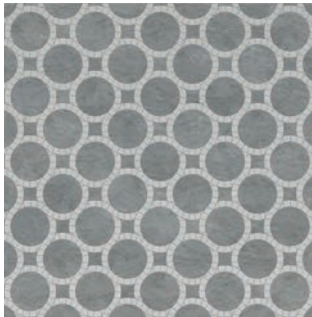
BUCKLE
LMMOBU



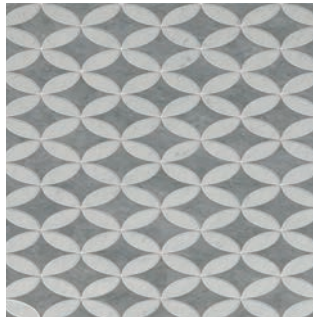
CELLULAR
LMMOCE



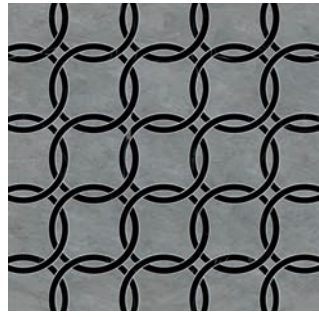
CHAINLINK
LMMOCK



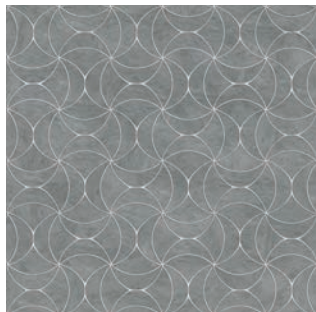
FLOW
LMMOFL



RETRO
LMMORE



RINGS
LMMORI



WINDMILL
LMMOWM

Photos are representative of color and shown as a 24" x 24" area. Please request samples, natural variation can occur.

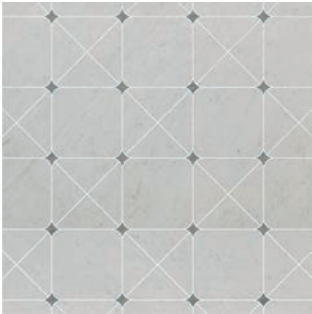


ESTB. 1978

WATERWORKS

Luminaire

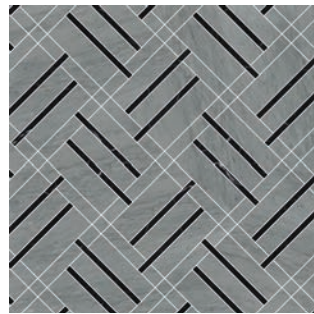
DECORATIVE MOSAIC
BLOCKS & DIAMONDS



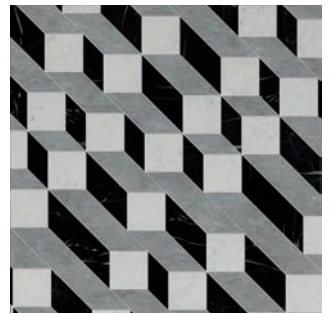
CONSTELLATION
LMMOCN



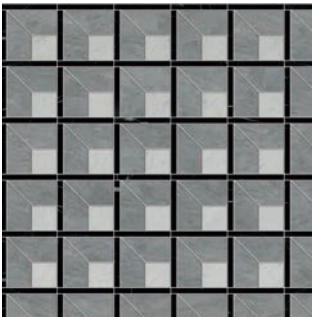
CRAWLEY
LMMOCR



DASH
LMMODS



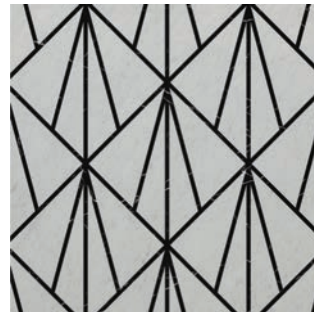
DERBY
LMMODE



DOBBY
LMMODB



PRISM
LMMOPR



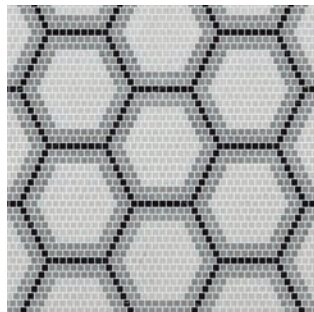
PYRAMID
LMMOPY



ROYAL
LMMORO



RUBRIC
LMMORU



SQUARE
LMMOSQ



WINDOWPANE
LMMOWP

Photos are representative of color and shown as a 24" x 24" area. Please request samples, natural variation can occur.

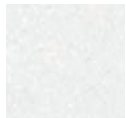


ESTB. 1978

WATERWORKS

Luminaire STONE GROUPS

GROUP 1



Thassos V1



Statuary V4



Calacatta V4



Arctic White V2



Carrara V3



Goleta Gray V5



Silver V5



St. Laurent V2



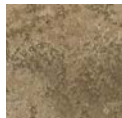
Obsidian V3



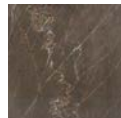
Cream Travertine V3



San Pablo Travertine V3



Noce V3



Stone Dream V3



Ojinaga V3



Salmon Pink V4

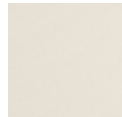
GROUP 2



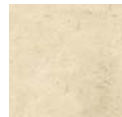
Arabescato Carrara V4



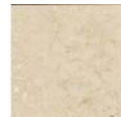
Skyline V3



Champagne V2



Crema Marfil V4



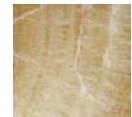
Botticino V3



Jura Gray V3



Gascogne Blue V2



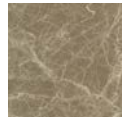
Honey Onyx V3



Seagrass V3



Athens Gray V3



Light Emperador V3



Dark Emperador V4



Lagos Azul* V2



Rojo Alicante V3



Empress Green* V3

GROUP 3



Afyon Sugar V2



Aurora V2



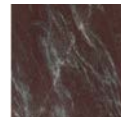
Celeste V3



Ming Green V3



Bardiglio V3



Rosso Laguna V3

PREMIUM



Blue Bahia V4



Blue Macauba V4

*not suitable for wet applications

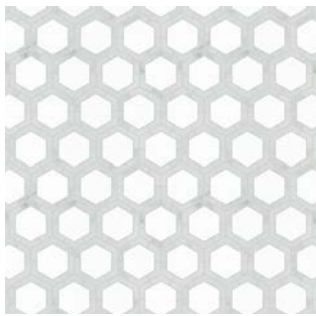


ESTB. 1978

WATERWORKS

Luminaire

INSTOCK MOSAICS



AXEL MOSAIC* V3
WHITE/GRAY POLISHED



TRACERY MOSAIC* V3
WHITE/GRAY POLISHED



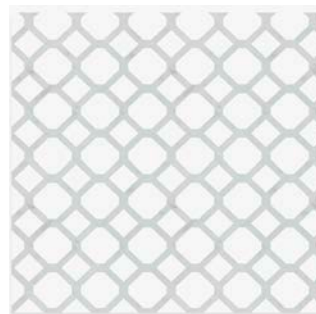
HIGHLAND MOSAIC* V3
WHITE/GRAY POLISHED



INTRIGUE MOSAIC* V3
WHITE/GRAY POLISHED



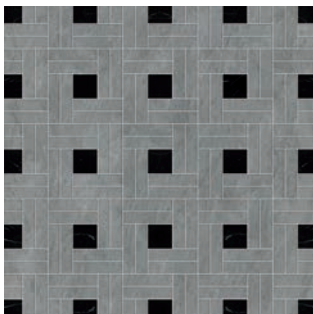
DOMINO MOSAIC* V3
WHITE/GRAY POLISHED



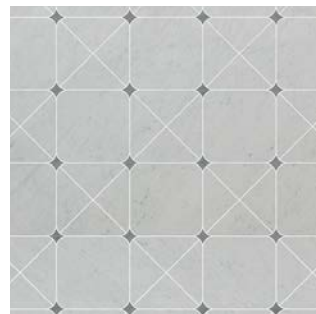
TWIST 'EM MOSAIC* V3
WHITE/GRAY POLISHED



WICKER MOSAIC* V3
WHITE/GRAY POLISHED



BARWEAVE
STATUARY (H), OBSIDIAN (P),
STATUARY (H), THASSOS (P)



CONSTELLATION
CALACATTA (H), THASSOS (P),
CARRARA (H), THASSOS (P)



CROSSHATCH
CALACATTA (H)

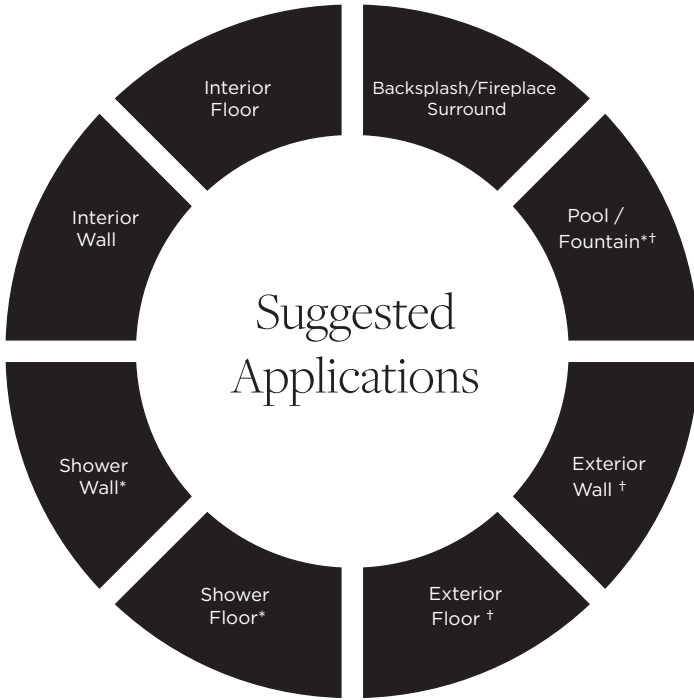
*Available only in colorway shown. Polished finish only.



ESTB. 1978

WATERWORKS

Luminaire



● Recommended Use ○ Not Recommended Use

Application Notes

* Various stones are suitable for use in wet environments, including steam showers, if properly installed, sealed, and maintained. Please inquire.

† Some stones are suitable in tropical/subtropical climates. Testing may be required. Please inquire.

Installation / Maintenance

- WATERWORKS ASSUMES NO RESPONSIBILITY FOR INSTALLATION
- Installation constitutes acceptance.
- Mosaic should be installed by a licensed and experienced tile setter.
- Refer to TCNA (Tile Council of North America) or ANSI standards for installation guidelines.
- All mosaics must be inspected PRIOR to installation.
- Dry lay mosaics prior to installation to allow for blending of color variation.
- Stone must be sealed before grout installation to allow grout to release and prevent staining.
- Stone and grout should be sealed after installation and maintained regularly.

Variation Level

| V1 | V2 | V3 | V4 | V5 |
|----|----|----|----|----|
| | | | | |

1. MINIMAL, IF ANY COLOR VARIATION
2. SLIGHT COLOR VARIATION CAN BE EXPECTED
3. A MEDIUM RANGE OF COLOR VARIATION IS TYPICAL; DARKER AND LIGHTER TONES ARE EVIDENT
4. CONSIDERABLE COLOR VARIATION IS TYPICAL; FROM DARKS TO LIGHTS AND SOME TONE CHANGES
5. EXTREME COLOR VARIATION CAN BE EXPECTED - THE RANGE IS OFTEN DIFFERING BUT COMPLEMENTARY

PLEASE REFER TO COLLECTION TEARSHEET FOR VARIATION LEVEL BY COLOR.

SAMPLING IS RECOMMENDED TO UNDERSTAND VARIATION OF MATERIAL

Product Variation

Color and surface variation is an inherent characteristic of natural materials and should be expected. Thickness and grout width will also vary and should be expected. Refer to our color variation ranking for further details. Please inquire for additional information.

Custom Opportunities Available

Minimums and extended lead-times may apply.

Please contact your local Waterworks showroom or our direct sales team at 800.899.6757.

Thickness

3/8"*

*Nominal: +/- 1/6"

Suggested Grout Lines

Varies- Please follow mosaic sheet