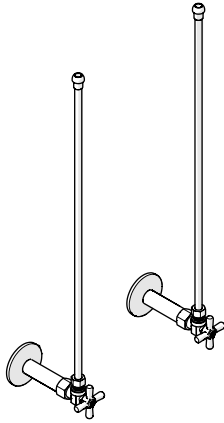


INSTALLATION GUIDELINES

SUPPLY KIT

UNIVERSAL TRANSITIONAL ANGLE LAVATORY SUPPLY KIT 1/2" IPS X 3/8" O.D. COMPRESSION



STYLES	
ULK2AP	ULK3AP [SHOWN]
UWK2AP	UWK3AP

IMPORTANT:

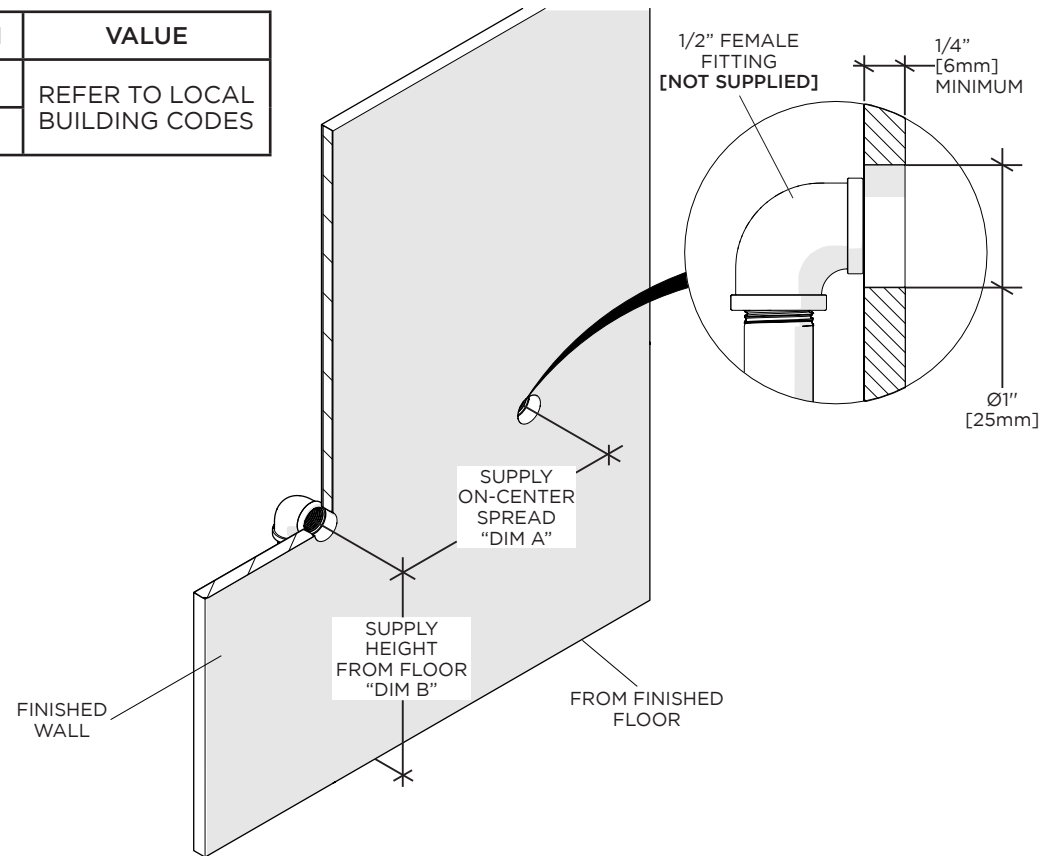
- To ensure this product is installed properly, you must read and follow these guidelines.
- The owner/user of this VALVE must keep this information for future reference.
- This VALVE must be installed by a professional licensed contractor and must be on-site prior to rough-in, this allows the installer to visualize the installation.
- This VALVE is **sold partially** assembled but shown fully disassembled for illustrative and service purposes only. Inspect the VALVE to ensure you have all the parts required for proper installation.
- Check the dimensions of the FIXTURE being used and refer to local building codes, if applicable.
- Be sure your installation conforms to all federal, state, and local codes. In the State of Massachusetts, all installations must comply with the rules and regulations set forth within 248 CMR.
- If further assistance is required, please contact Product Support at 1-800-927-2120 Monday through Friday, 8am - 6pm EST.
- Refer to the separate Service Parts Documents for available replacement parts.

TECHNICAL DETAILS:

DETAIL	SPECIFICATION
HANDLE TURN ANGLE	QUARTER TURN EACH WAY
FITTING HOLE DIAMETER	Ø1" [25mm]
INLET CONNECTION	1/2" MALE IPS
OUTLET CONNECTION	3/8" O.D. COMPRESSION
WATER PRESSURE RANGE	20psi [1.5 bar] MINIMUM
	85psi [6.0 bar] MAXIMUM
WATER PRESSURE RECOMMENDED	45psi [3.0 bar]

ROUGH-IN:

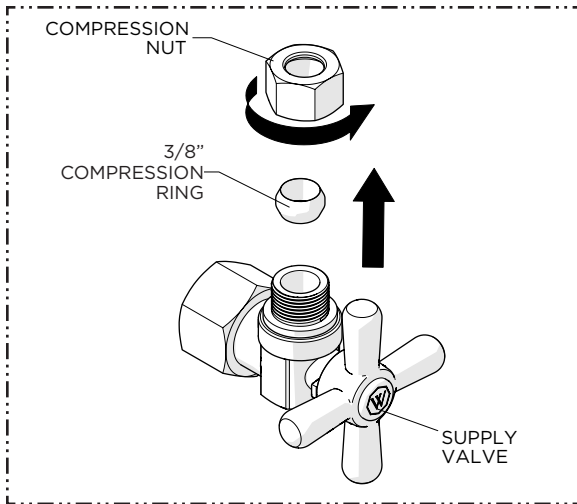
DIM	VALUE
A	REFER TO LOCAL BUILDING CODES
B	REFER TO LOCAL BUILDING CODES



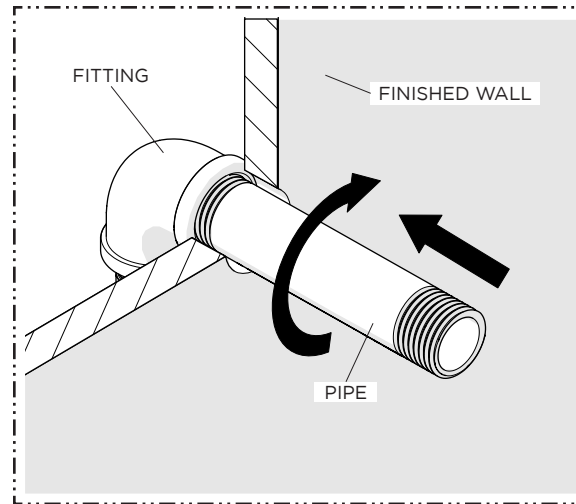
INSTALLATION GUIDELINES

SUPPLY KIT

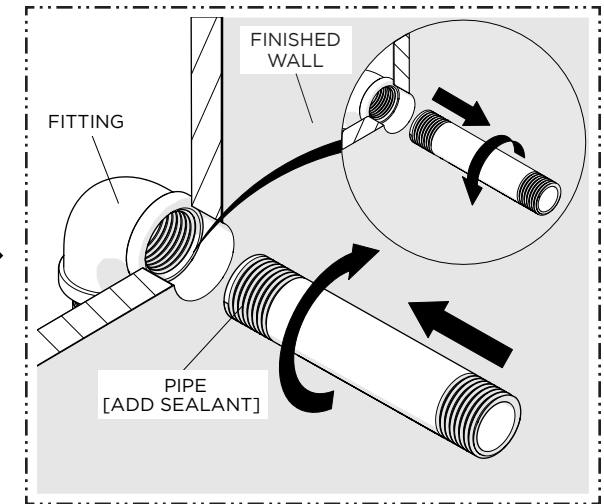
WATERWORKS



1. Remove the COMPRESSION NUT and COMPRESSION RING from each SUPPLY VALVES.

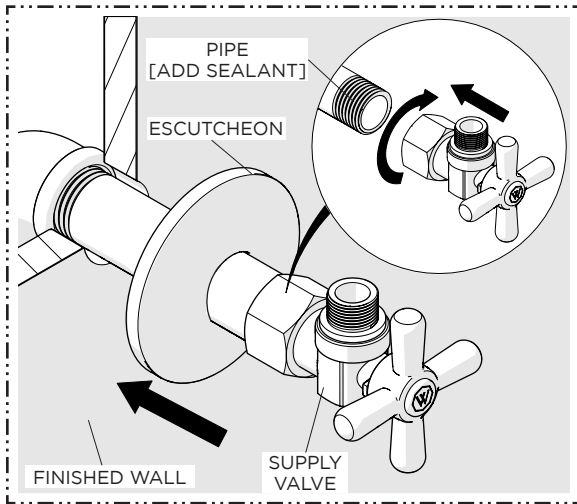


2. Dry-fit the 4" [102mm] PIPE into the FITTING inside the wall and ensure the PIPE projects far enough past the FINISHED WALL to connect the SUPPLY VALVE.



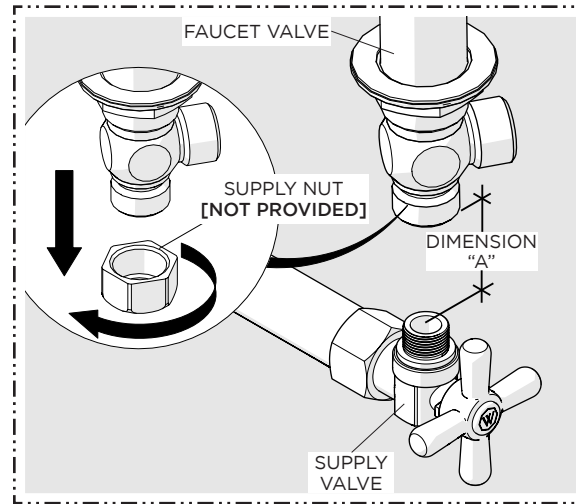
3. Remove the PIPE and apply a thread sealant then thread and securely tighten the PIPE into the FITTING inside the FINISHED WALL.

NOTE: Do NOT use any putty on the threads.

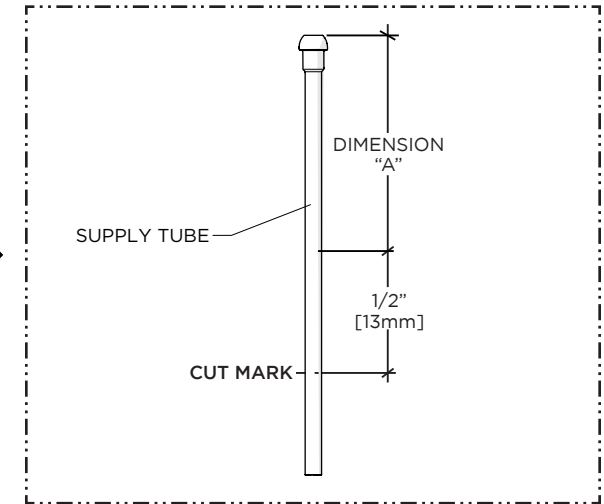


4. Slide the ESCUTCHEON onto the PIPE, apply a thread sealant, then thread and securely tighten the SUPPLY VALVE onto the PIPE. Ensure the outlet of the VALVE is properly aligned.

NOTE: Do NOT use any putty on the threads.



5. Measure the distance between the SUPPLY VALVE and the FAUCET VALVE (**sold separately**). Make sure to remove the SUPPLY NUT from the FAUCET VALVE before measuring.

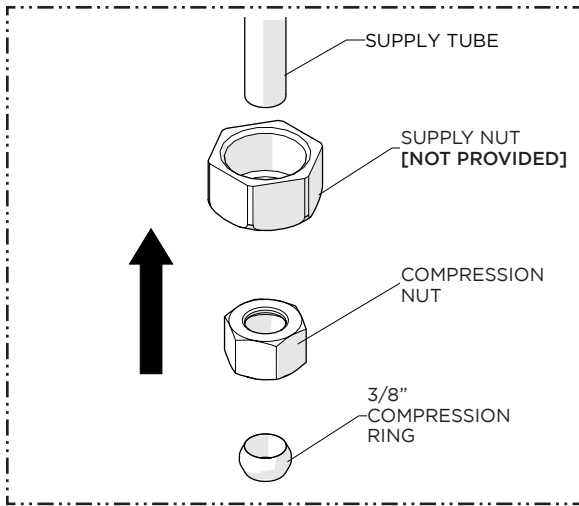


6. Using the previous measurement, add 1/2" [13mm] and cut the SUPPLY TUBE. Make sure to remove any burrs and sharp edges to avoid damaging the COMPRESSION RING.

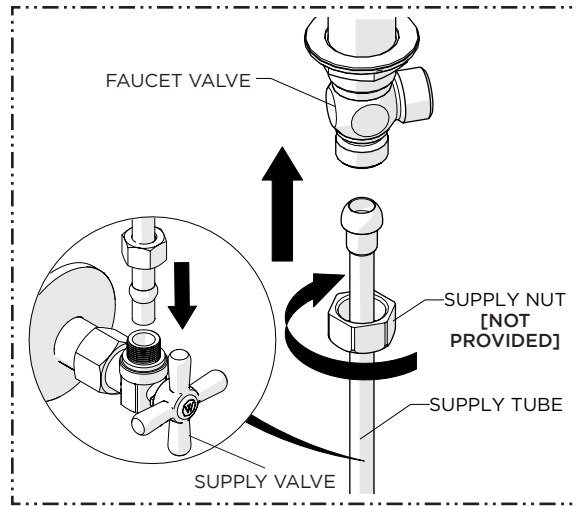
INSTALLATION GUIDELINES

SUPPLY KIT

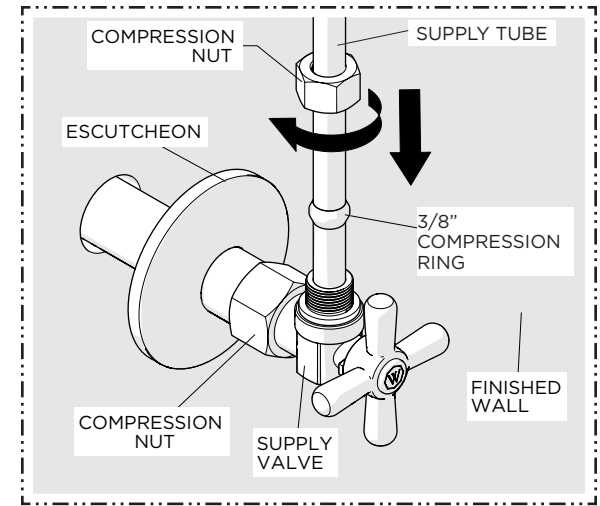
WATERWORKS



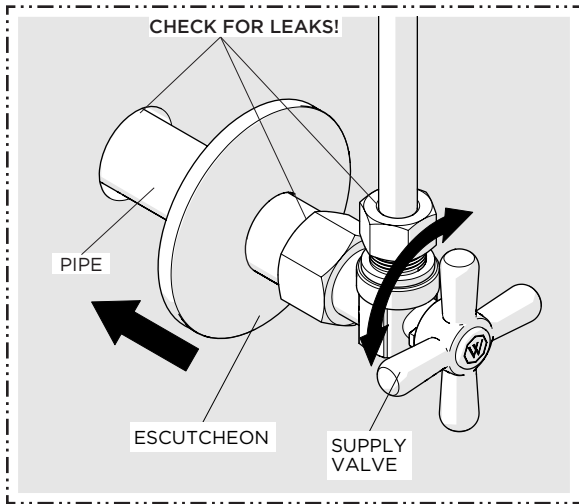
7. Slide the SUPPLY NUT (not provided), COMPRESSION NUT and COMPRESSION RING onto the SUPPLY TUBE.



8. Insert the SUPPLY TUBE into the FAUCET VALVE and SUPPLY VALVE then thread the SUPPLY NUT (not provided) onto the VALVE.

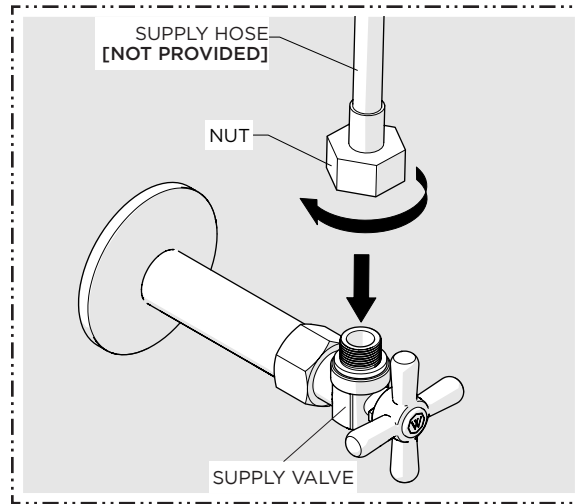


9. Slide the COMPRESSION NUT and RING down the SUPPLY TUBE and thread onto the SUPPLY VALVE until snug.



10. Turn on water supply and check for leaks then slide the ESCUTCHEON down the PIPE.

NOTE: Repeat Steps 1 to 10 for installing the second SUPPLY VALVE.



OPTIONAL:

11. If the FAUCET does **not** use a SUPPLY TUBE connection, a 3/8" compression (9/16-24 UNEF) SUPPLY HOSE (not provided) can be connected to the SUPPLY VALVE.