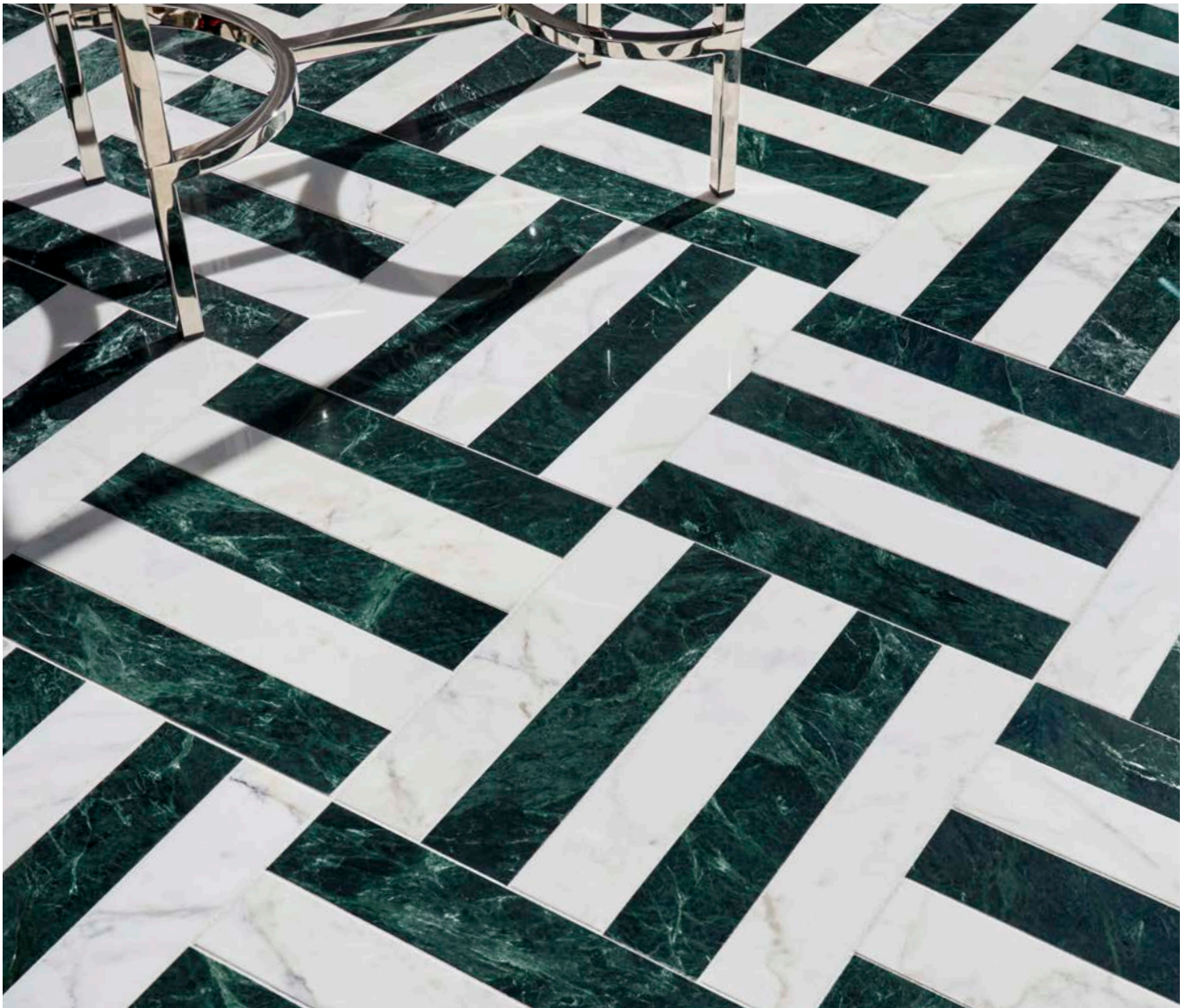




ESTB. 1978

WATERWORKS

MasterPiece



Striking. Stylish. And equally transformative on walls and floors. Referencing classic wood designs, our MasterPiece styles are precisely engineered to capture the beauty of stone with an unexpected interplay of its veining and shadings. Natural variations in the stone lend the patterns an artful quality. Designs can be scaled up or down, letting you personalize a space of any size.

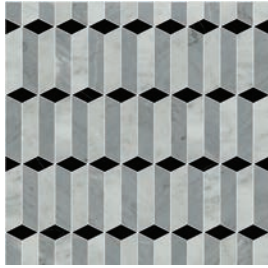


ESTB. 1978

WATERWORKS

MasterPiece

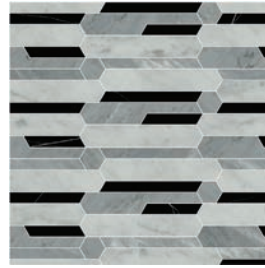
MOSAIC



ASCEND PETITE
MPMOAP



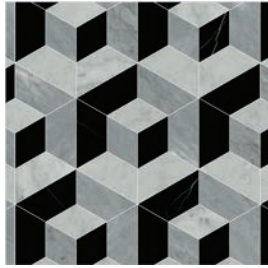
ASCEND GRANDE
MPMOAG



BAR GRAPHIC PETITE
MPMOBP



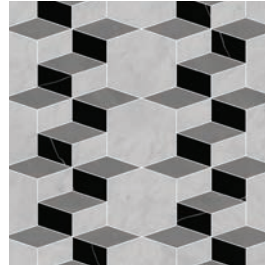
BAR GRAPHIC GRANDE
MPMOBG



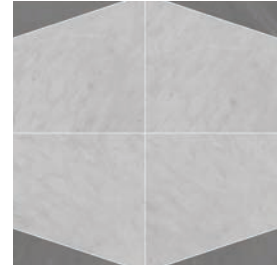
CORNERED BLOCK PETITE
MPMOCP



CORNERED BLOCK GRANDE
MPMOCG



DIAMOND BLOCK PETITE
MPMODP



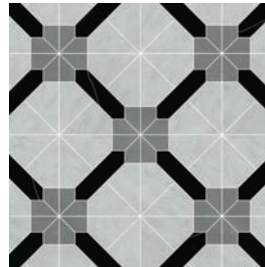
DIAMOND BLOCK GRANDE
MPMODG



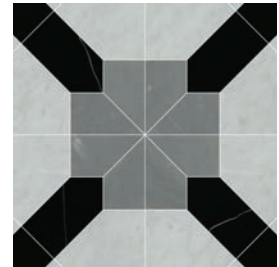
FRETWORK PETITE
MPMOFP



FRETWORK GRANDE
MPMOFG



INLAY PETITE
MPMONP



INLAY GRANDE
MPMONG



KERF BLOCK PETITE
MPMOKP



KERF BLOCK GRANDE
MPMOKG



LATTICE HEX PETITE
MPMOHP



LATTICE HEX GRANDE
MPMOHG



ESTB. 1978

WATERWORKS

MasterPiece

MOSAIC



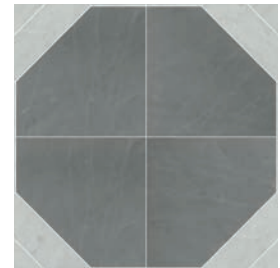
LATTICE WEAVE PETITE
MPMOLP



LATTICE WEAVE GRANDE
MPMOLG



OCTAGON PETITE
MPMOOP



OCTAGON GRANDE
MPMOOG



PAPYRUS PETITE
MPMOPP



PAPYRUS GRANDE
MPMOPG



PARQUET PETITE
MPMOUP



PARQUET GRANDE
MPMOUG



RIBBON WEAVE PETITE
MPMORP



RIBBON WEAVE GRANDE
MPMORG



SHAKER WEAVE PETITE
MPMOSP



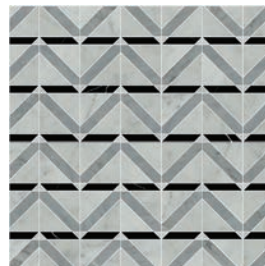
SHAKER WEAVE GRANDE
MPMOSG



SQUARE CUT PETITE
MPMOQP



SQUARE CUT GRANDE
MPMOQG



TRIANGLE STREET PETITE
MPMOIP



TWILL STRIPE PETITE
MPMOTP



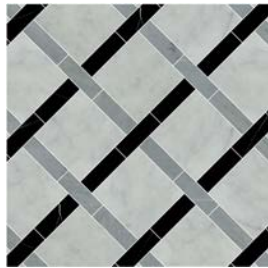
ESTB. 1978

WATERWORKS

MasterPiece



TWILL STRIPE GRANDE
MPMOTG



WOVEN BANDS PETITE
MPMOWP



WOVEN BANDS GRANDE
MPMOWG



ESTB. 1978

WATERWORKS

MasterPiece STONE GROUPS

GROUP 1



Arancio Di Selva V3



Breccia Oniciata V3



Black Granite V1



Carrara V3



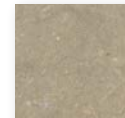
Cremonesia Honed** V2



Pompeii Gold V2



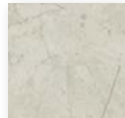
Provenza V3



Seagrass V3



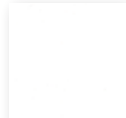
Siberian White V3



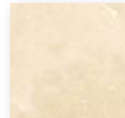
Smoke Honed** V3



Tea Rose V2



Thassos Standard V1



Tavertine Navona V3



Travertine Noce V3

GROUP 2



Alba Chiara V3



Aurora V2



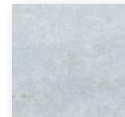
Athens Grey Honed** V3



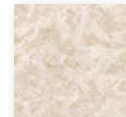
Bardiglio V3



Bianco Antico V3



Blue Celeste V3



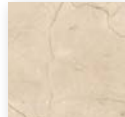
Botticino V2



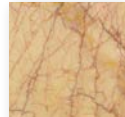
Calacatta V4



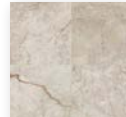
Cippolino V3



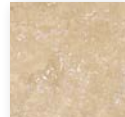
Crema Marfil V2



Crema Valencia V3



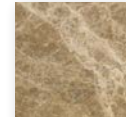
Dove Pink V3



Durango Honed** V2



Emperador Dark V3



Emperador Light V3



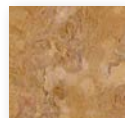
Empress Green† V2



French Vanilla V3



Gascogne Blue Honed** V2



Giallo Reale V3



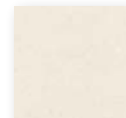
Graphite V2



Honey Onyx V3



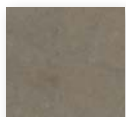
Imperial Danby V3



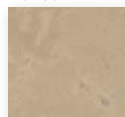
Ivory Cream V1



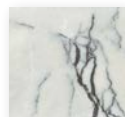
Jerusalem Gold V2



Lagos Azul Honed** V2



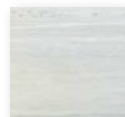
Lagos Gold Honed** V2



Lilac V4



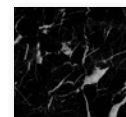
Ming Green V3



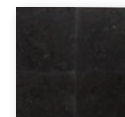
Monterey Grey V2



Mystique V4



Nero Marquina V3



Piedmont Honed** V2

* See variation chart on page 8

**Honed Finish Only

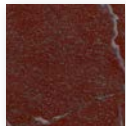
† Not suitable for wet applications



ESTB. 1978

WATERWORKS

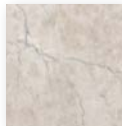
MasterPiece STONE GROUPS



Red Lake V3



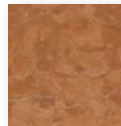
Rojo Alicante V2



Roman Blue*** V3



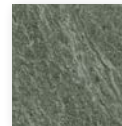
Rosa Portogallo V4



Rosa Verona V2



Shamrock V3



Spring Green V2



Statuary V4



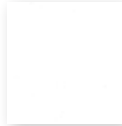
St. Laurent V2



Statuary Mist V3



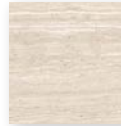
Teos Green V3



Thassos Select V1



Verde Luna V3



Whitewood V3 Honed**

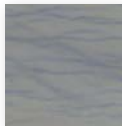


Zephyr V3

GROUP 2



Blue Bahia V3



Blue Macauba V4

PREMIUM

* See variation chart on page 8

** Honed Finish Only

***12x12/Tesserae Only



ESTB. 1978

WATERWORKS

MasterPiece

IN-STOCK PROGRAM

MOSAICS



MONO GRAPHIC
MPMIMG

CALACATTA (H)



QUARTER SQUARE BLOCK
MPMIQS

THASSOS (H)
CARRARA (H)
BARDIGLIO (H)



RUMBLE
MPMITU

THASSOS (TUMBLER)



STACKED STRIPE
MPMISS

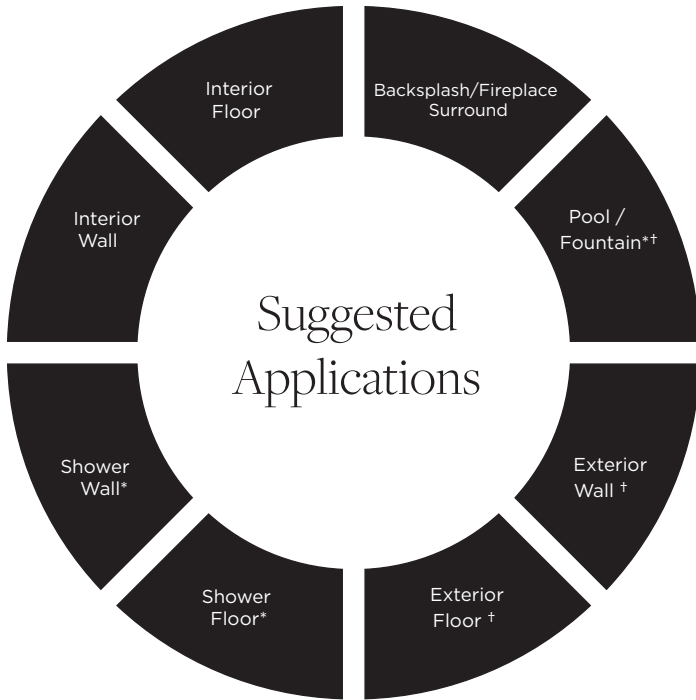
THASSOS (H & P)



ESTB. 1978

WATERWORKS

MasterPiece



● Recommended Use ○ Not Recommended Use

Application Notes

* Various stones are suitable for use in wet environments, including steam showers, if properly installed, sealed, and maintained. Please inquire.

† Some stones are suitable in tropical/subtropical climates. Testing may be required. Please inquire.

Installation / Maintenance

- WATERWORKS ASSUMES NO RESPONSIBILITY FOR INSTALLATION
- Installation constitutes acceptance.
- Mosaic should be installed by a licensed and experienced tile setter.
- Refer to TCNA (Tile Council of North America) or ANSI standards for installation guidelines.
- All mosaics must be inspected PRIOR to installation.
- Dry lay mosaics prior to installation to allow for blending of color variation.
- Waterworks recommends a grouted test panel prior to installation to understand final appearance of grouted materials.
- Stone must be sealed before grout installation to allow grout to release and prevent staining.
- Stone and grout should be sealed after installation and maintained regularly.

Variation Level

V1	V2	V3	V4	V5

1. MINIMAL, IF ANY COLOR VARIATION
2. SLIGHT COLOR VARIATION CAN BE EXPECTED
3. A MEDIUM RANGE OF COLOR VARIATION IS TYPICAL; DARKER AND LIGHTER TONES ARE EVIDENT
4. CONSIDERABLE COLOR VARIATION IS TYPICAL; FROM DARKS TO LIGHTS AND SOME TONE CHANGES
5. EXTREME COLOR VARIATION CAN BE EXPECTED - THE RANGE IS OFTEN DIFFERING BUT COMPLEMENTARY

PLEASE REFER TO COLLECTION TEARSHEET FOR VARIATION LEVEL BY COLOR.

SAMPLING IS RECOMMENDED TO UNDERSTAND VARIATION OF MATERIAL

Product Variation

Color and surface variation is an inherent characteristic of natural materials and should be expected. Thickness and grout width will also vary and should be expected. Refer to our color variation ranking for further details. Please inquire for additional information.

Custom Opportunities Available

Minimums and extended lead-times may apply.

Please contact your local Waterworks showroom or our direct sales team at 800.899.6757.

Thickness

3/8"*

*Nominal: +/- 1/6"

Suggested Grout Lines

Varies- Please follow mosaic sheet