



ESTB. 1978

WATERWORKS

## Luminaire



Meticulously cut, these hand-assembled mosaics come in a range of styles and color blends, bringing graphic shapes and consistent, mesmerizing patterns to walls and floors. Flexible options within the Luminaire program invite confident design decisions, making it easy for professionals and homeowners to add value and artistry to any space.

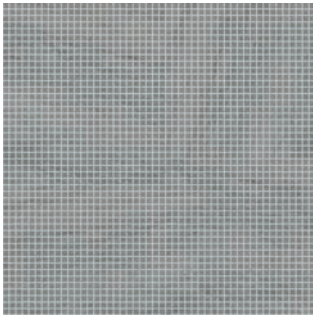


ESTB. 1978

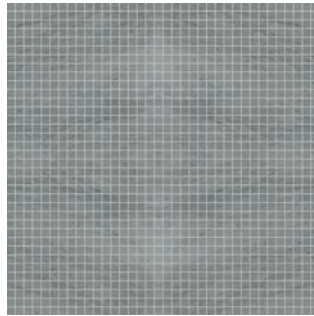
# WATERWORKS

## Luminaire

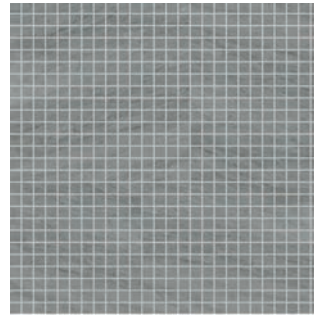
### STANDARD MOSAIC



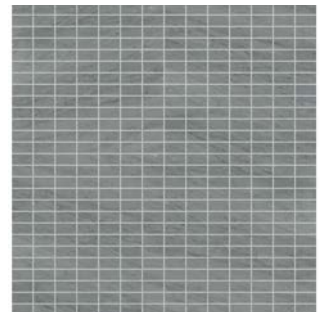
1cm STACKED  
LMMS01



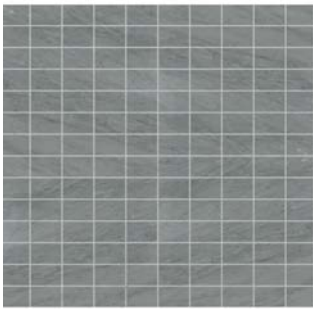
1.5cm STACKED  
LMMS15



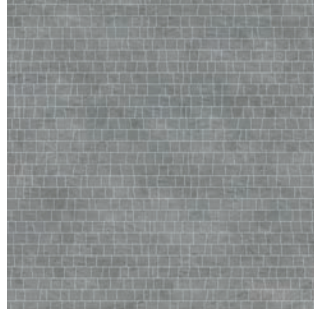
2cm STACKED  
LMMS02



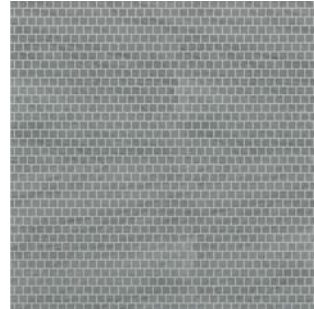
2cm X 4cm STACKED  
LMMS24



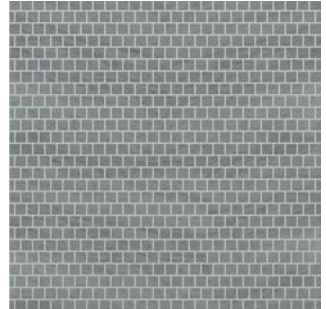
4cm X 6cm STACKED  
LMMS46



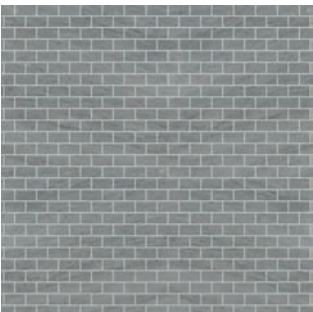
2cm HAND CLIPPED  
LMMOHC



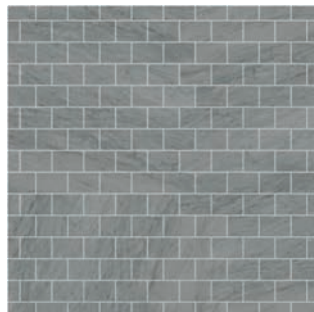
1.5cm STAGGERED  
LMSM15



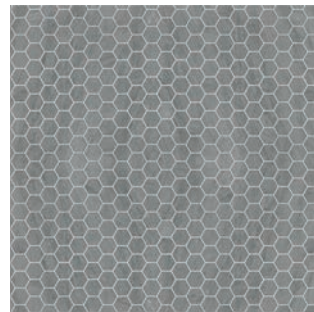
2cm STAGGERED  
LMSM02



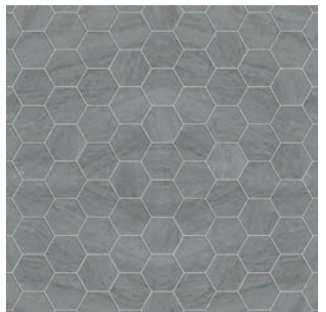
2cm X 4cm STAGGERED BRICK  
LMMS24



4cm X 6cm STAGGERED BRICK  
LMMS46



3cm HEXAGON  
LMMOH3



7cm HEXAGON  
LMMOH7

Photos are representative of color and shown as a 24" x 24" area. Please request samples, natural variation can occur.



ESTB. 1978

# WATERWORKS

## Luminaire

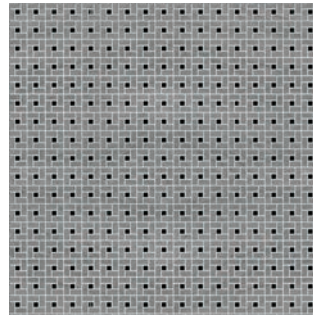
### STANDARD MOSAIC



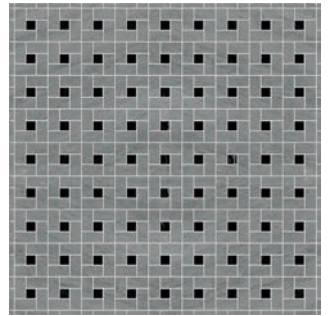
2cm X 4cm HERRINGBONE  
LMMOH2



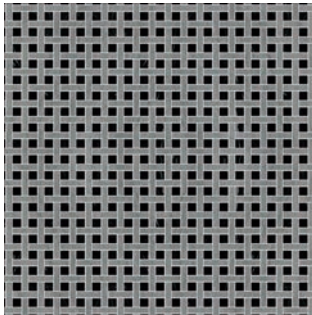
4cm X 6cm HERRINGBONE  
LMMOH4



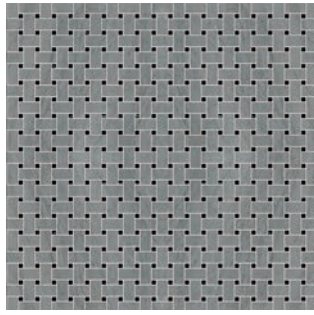
1cm X 2cm ARC D'MIDI  
LMMOA2



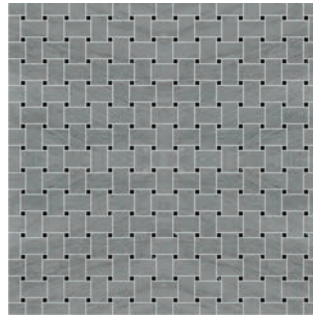
2cm X 4cm ARC D'MIDI  
LMMOA1



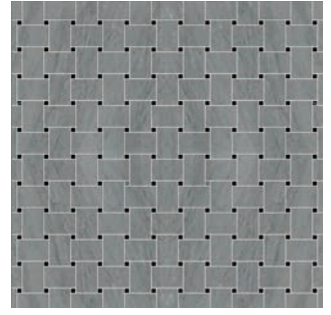
1cm X 5cm BASKETWEAVE  
LMMOB1



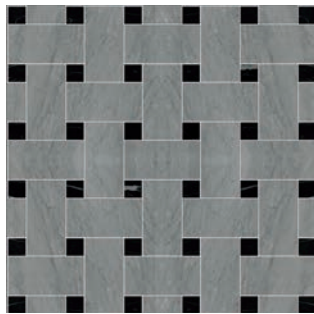
2cm X 4cm BASKETWEAVE  
LMMOB2



3cm X 5cm BASKETWEAVE  
LMMOB3



4cm X 6cm BASKETWEAVE  
LMMOB4



7.5cm X 15cm BASKETWEAVE  
LMMOB7

Photos are representative of color and shown as a 24" x 24" area. Please request samples, natural variation can occur.



ESTB. 1978

# WATERWORKS

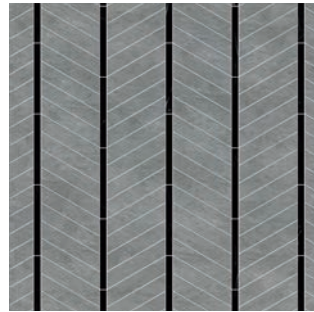
## Luminaire

DECORATIVE MOSAIC

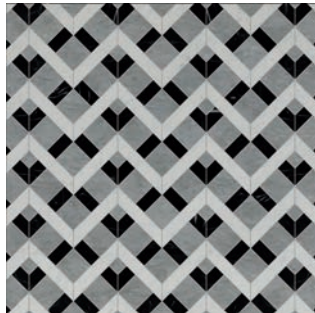
HERRINGBONE



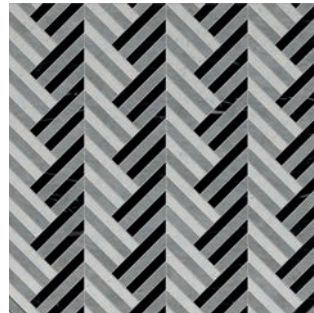
ARROW  
LMMOAR



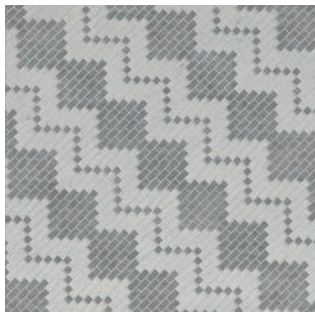
DART  
LMMODA



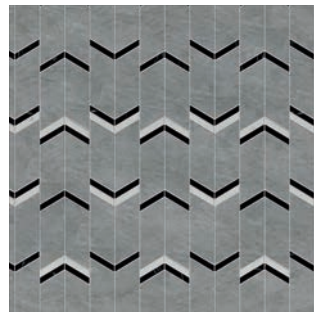
LENO  
LMMOLE



MARKER  
LMMOMA



TWILL  
LMMOTW



V-GROOVE  
LMMOVG

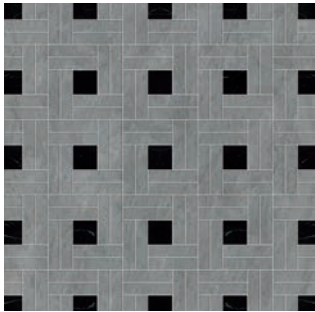
Photos are representative of color and shown as a 24" x 24" area. Please request samples, natural variation can occur.



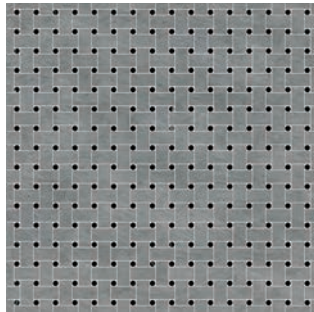
ESTB. 1978

# WATERWORKS

## Luminaire DECORATIVE MOSAIC WEAVES



BARWEAVE  
LMMOBW



BASKETDOT  
LMMOBD



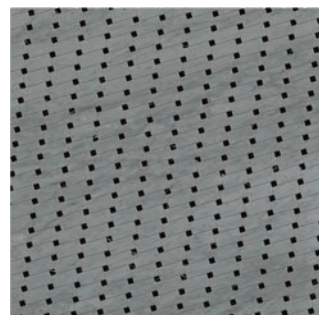
BOLTON  
LMMOBO



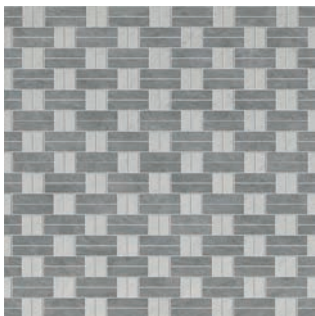
CROSSHATCH  
LMMOCH



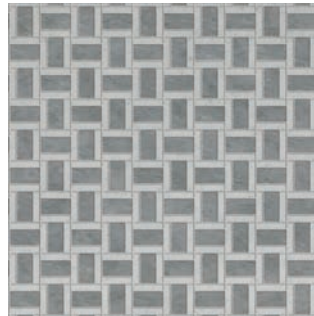
MESH  
LMMOME



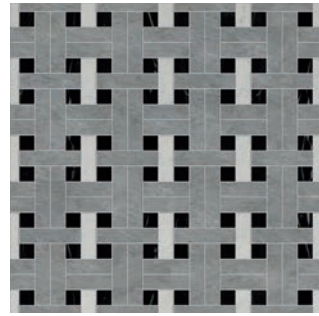
OFFSET  
LMMOOS



OXFORD  
LMMOOX



PINPOINT  
LMMOPP



PLAINWEAVE  
LMMOPW

Photos are representative of color and shown as a 24" x 24" area. Please request samples, natural variation can occur.



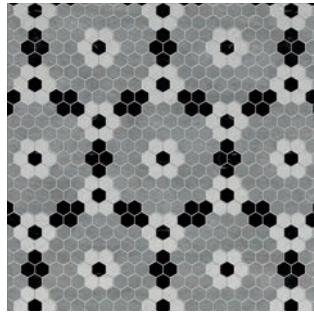
ESTB. 1978

# WATERWORKS

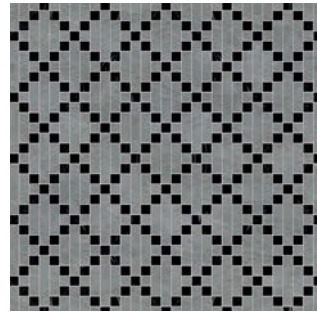
## Luminaire DECORATIVE MOSAIC CENTURY



CLOVER  
LMMOCL



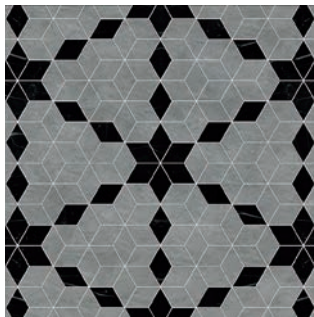
COSMO  
LMMOCO



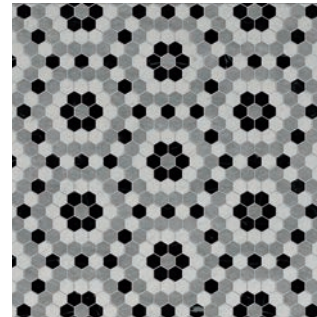
CROSSWEAVE  
LMMOCW



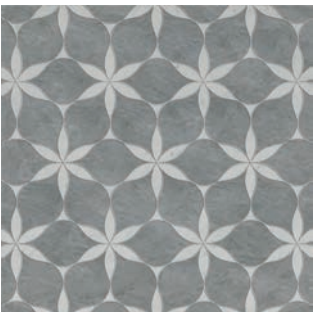
DAISY  
LMMODI



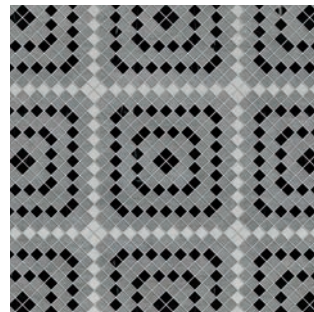
MORNING STAR  
LMMOMS



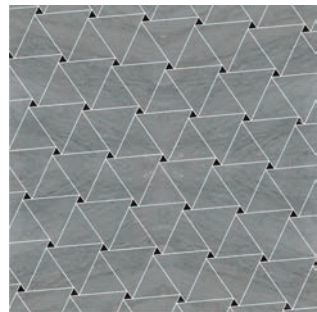
PENNY QUILT  
LMMOPQ



PETALS  
LMMOPE



SAWTOOTH  
LMMOST



TRIANGLE QUILT  
LMMOTQ

Photos are representative of color and shown as a 24" x 24" area. Please request samples, natural variation can occur.



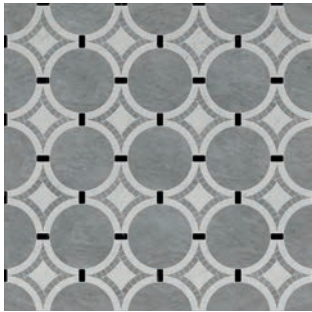
ESTB. 1978

# WATERWORKS

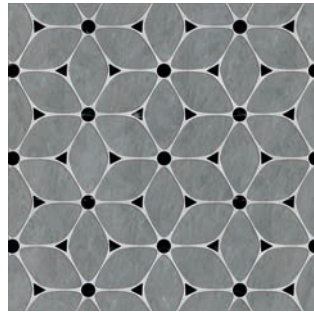
## Luminaire

DECORATIVE MOSAIC

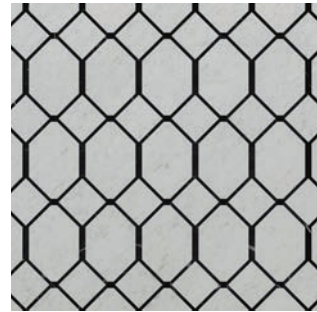
RINGLETS



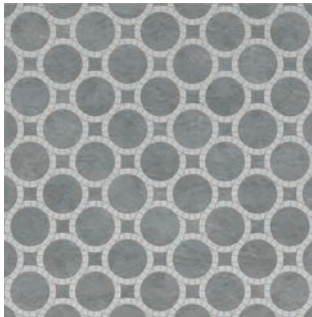
BUCKLE  
LMMOBU



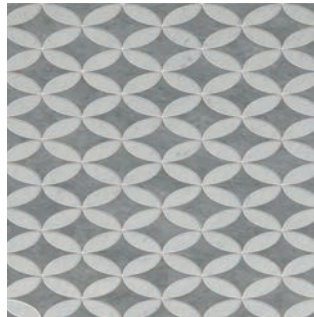
CELLULAR  
LMMOCE



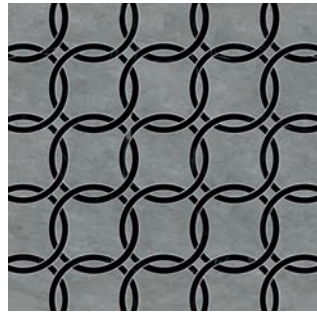
CHAINLINK  
LMMOCK



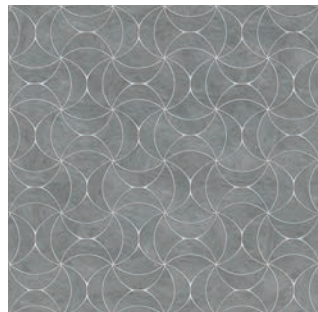
FLOW  
LMMOFL



RETRO  
LMMORE



RINGS  
LMMORI



WINDMILL  
LMMOWM

Photos are representative of color and shown as a 24" x 24" area. Please request samples, natural variation can occur.

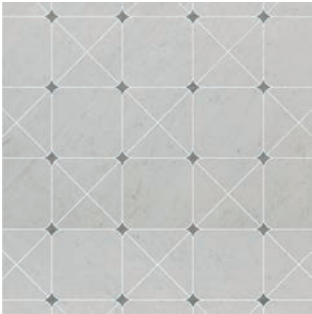


ESTB. 1978

# WATERWORKS

## Luminaire

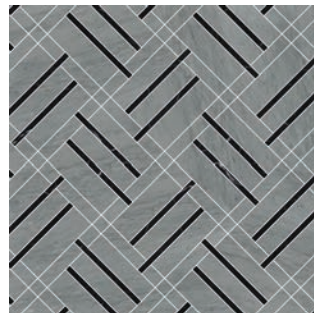
DECORATIVE MOSAIC  
BLOCKS & DIAMONDS



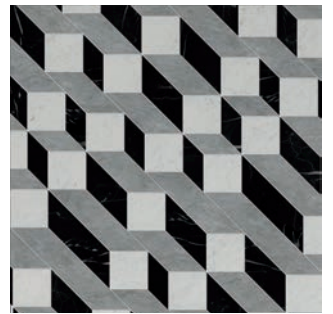
CONSTELLATION  
LMMOCN



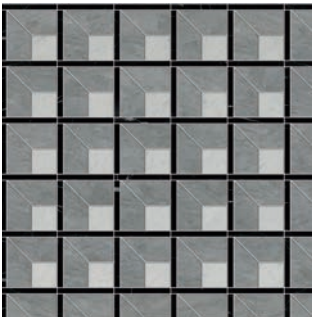
CRAWLEY  
LMMOCR



DASH  
LMMODS



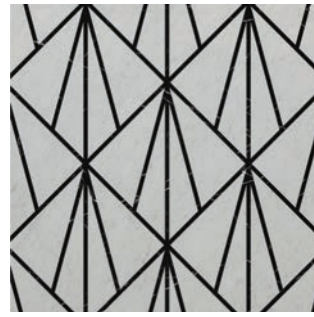
DERBY  
LMMODE



DOBBY  
LMMODB



PRISM  
LMMOPR



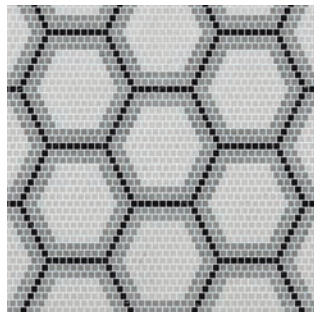
PYRAMID  
LMMOPY



ROYAL  
LMMORO



RUBRIC  
LMMORU



SQUARE  
LMMOSQ



WINDOWPANE  
LMMOWP

Photos are representative of color and shown as a 24" x 24" area. Please request samples, natural variation can occur.



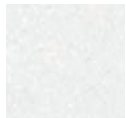


ESTB. 1978

# WATERWORKS

## Luminaire STONE GROUPS

GROUP 1



Thassos VI



Statuary V4



Calacatta V4



Carrara V3



Goleta Gray V5



Silver V5



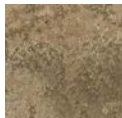
St. Laurent V2



Obsidian V3



Cream Travertine V3

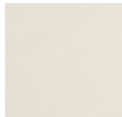


Noce V3

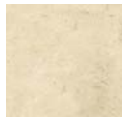
GROUP 2



Arabescato Carrara V4



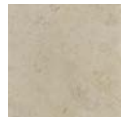
Champagne V2



Crema Marfil V4



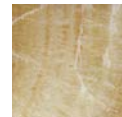
Botticino V3



Jura Gray V3



Gascogne Blue V2



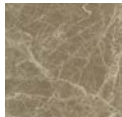
Honey Onyx V3



Seagrass V3



Athens Gray V3



Light Emperador V3



Dark Emperador V4



Lagos Azul\* V2



Rojo Alicante V3



Empress Green\* V3

GROUP 3



Afyon Sugar V2



Aurora V2



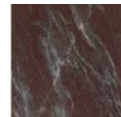
Celeste V3



Ming Green V3



Bardiglio V3



Rosso Laguna V3

PREMIUM



Blue Bahia V4



Blue Macauba V4

\*not suitable for wet applications

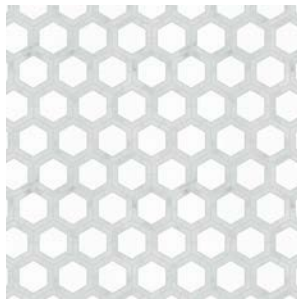


ESTB. 1978

# WATERWORKS

## Luminaire

### INSTOCK MOSAIC



**Axel Mosaic** V3  
*White / Gray Polished*



**Disco Mosaic** V3  
*White / Gray Polished*



**Domino Mosaic** V3  
*White / Gray Polished*



**Highland Mosaic** V3  
*White / Gray Polished*



**Intrigue Mosaic** V3  
*White / Gray Polished*



**Tracery Mosaic** V3  
*White / Gray Polished*



**Twist 'em Mosaic** V3  
*White / Gray Polished*



**Wicker Mosaic** V3  
*White / Gray Polished*

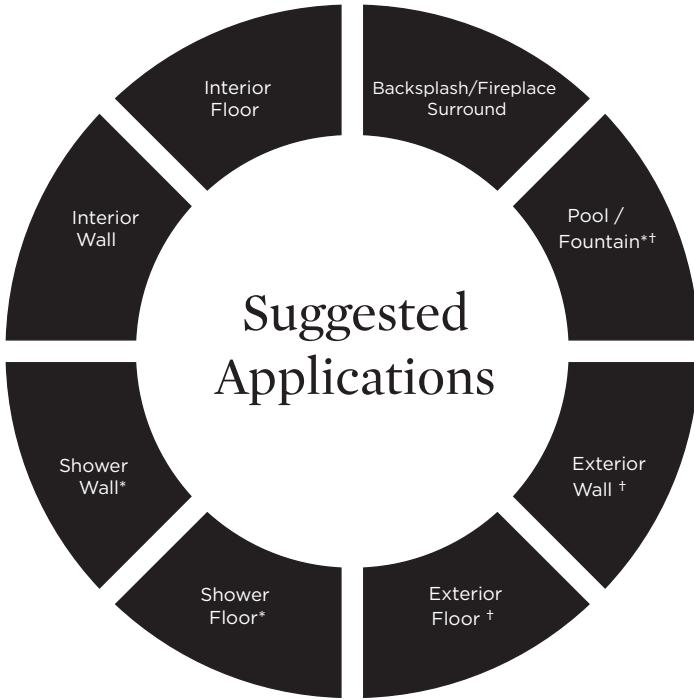
\*Available only in colorway shown. Polished finish only.



ESTB. 1978

# WATERWORKS

## Luminaire



● Recommended Use      ○ Not Recommended Use

### Application Notes

\* Various stones are suitable for use in wet environments, including steam showers, if properly installed, sealed, and maintained. Please inquire.

† Some stones are suitable in tropical/subtropical climates. Testing may be required. Please inquire.

### Installation / Maintenance

- WATERWORKS ASSUMES NO RESPONSIBILITY FOR INSTALLATION
- Installation constitutes acceptance.
- Mosaic should be installed by a licensed and experienced tile setter.
- Refer to TCNA (Tile Council of North America) or ANSI standards for installation guidelines.
- All mosaics must be inspected PRIOR to installation.
- Dry lay mosaics prior to installation to allow for blending of color variation.
- Stone must be sealed before grout installation to allow grout to release and prevent staining.
- Stone and grout should be sealed after installation and maintained regularly.

**Variation Level**

V1	V2	V3	V4	V5

1. MINIMAL, IF ANY COLOR VARIATION
2. SLIGHT COLOR VARIATION CAN BE EXPECTED
3. A MEDIUM RANGE OF COLOR VARIATION IS TYPICAL; DARKER AND LIGHTER TONES ARE EVIDENT
4. CONSIDERABLE COLOR VARIATION IS TYPICAL; FROM DARKS TO LIGHTS AND SOME TONE CHANGES
5. EXTREME COLOR VARIATION CAN BE EXPECTED - THE RANGE IS OFTEN DIFFERING BUT COMPLEMENTARY

**PLEASE REFER TO COLLECTION TEARSHEET FOR VARIATION LEVEL BY COLOR.**

**SAMPLING IS RECOMMENDED TO UNDERSTAND VARIATION OF MATERIAL**

### Product Variation

Color and surface variation is an inherent characteristic of natural materials and should be expected. Thickness and grout width will also vary and should be expected. Refer to our color variation ranking for further details. Please inquire for additional information.

### Custom Opportunities Available

Minimums and extended lead-times may apply.

Please contact your local Waterworks showroom or our direct sales team at 800.899.6757.

**Thickness**

$\frac{3}{8}$ "\*

\*Nominal: +/- 1/8"

**Suggested Grout Lines**

Varies- Please follow mosaic sheet