

Alta

100696

Alta Integrated Single Vanity with Square Legs and Hardware
24" x 21" x 33 1/4"



SHOWN IN ALTA INTEGRATED SINGLE VANITY WITH SQUARE LEGS AND HARDWARE 24" X 21" X 33 1/4" | 100696

TECHNICAL DETAILS

ADA Compliance: No
Adjustable Levelers Feet: N
Bowl Shape: Oval
Depth To Overflow: 114 mm
Drain Hole Depth: 44 mm
Drain Hole Diameter: 44 mm
Fittings Hole Depth: 32 mm
Fittings Hole Diameter: 35 mm
Overflow Opening: Yes
Primary Material: Wood
Sink Visibility: N

INSPIRATION

Modern & minimalist. Alta incorporates mid-century elements with notable architectural & industrial influences.

CODES & STANDARDS

PRODUCT FEATURES

Designed by and exclusive to Waterworks

Vanity with Integrated Hardware; specify Brass or Nickel when ordering

Stocked in Clear Oak Finish

Available with sink and slab top: use ALVN07

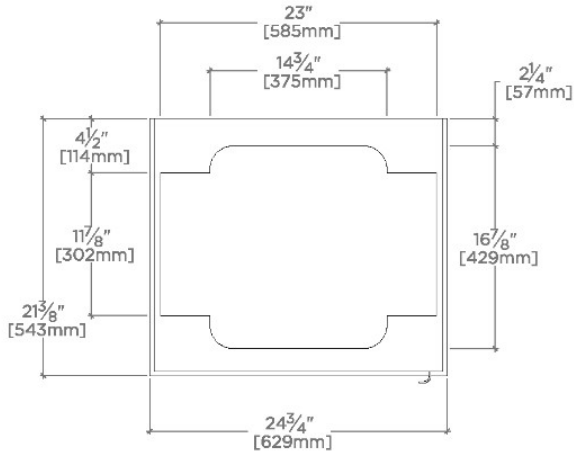
CERTIFICATIONS

PRODUCT (NOTES)

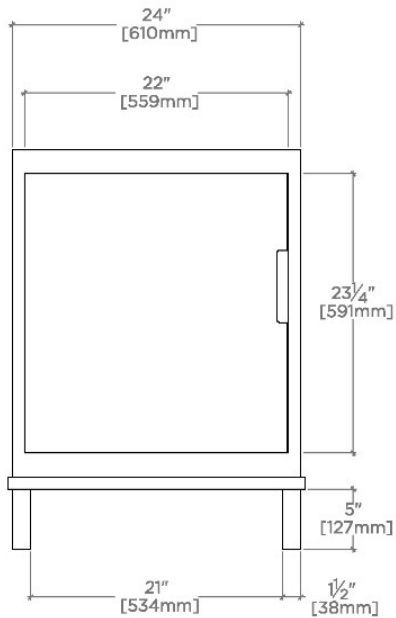
Alta

100696

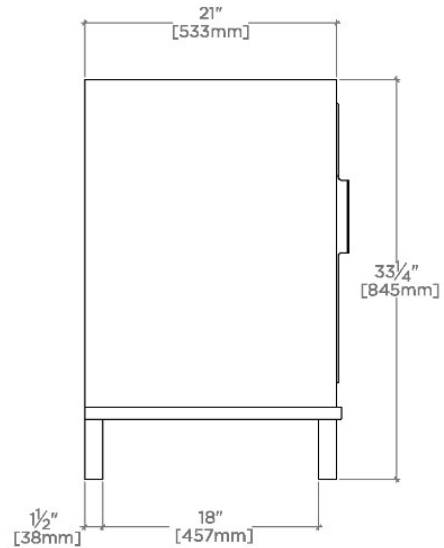
Alta Integrated Single Vanity with Square Legs and Hardware
24" x 21" x 33 1/4"



TOP VIEW SCALE: 3/4"=1'-0"



FRONT VIEW SCALE: 3/4"=1'-0"



SIDE VIEW SCALE: 3/4"=1'-0"