

BOND

B2P120

Bond Solo Series Two Way Pressure Balance Diverter Trim
with Roman Numerals and Straight Lever Handle



SHOWN IN BOND SOLO SERIES TWO WAY PRESSURE BALANCE DIVERTER TRIM WITH ROMAN NUMERALS AND STRAIGHT LEVER HANDLE | B2P120

TECHNICAL DETAILS

ADA Compliance: Yes
Fittings Hole Diameter: 2"
Number Of Holes: One Hole
Primary Material: Brass

INSPIRATION

Bond draws inspiration from the Aesthetic Movement, rare vintage lighters, and modern industrial design. The result is a contemporary collection with a soulful quality that inhabits the full range of modern style, from austere minimalism to warm contemporary.

CODES & STANDARDS

ASME A112.18.1/CSA B125.1, State of MA

PRODUCT FEATURES

Lever Handle

For use with a Pressure Balance shower system and two waterway outlets such as a handshower, shower head, or tub spout

Stocked in Chrome, Nickel, Brass and Dark Nickel

Requires rough valve, sold separately: GUDV2P (USA) or GU2PDV (UK/International)

CERTIFICATIONS

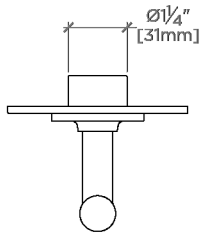


PRODUCT (NOTES)

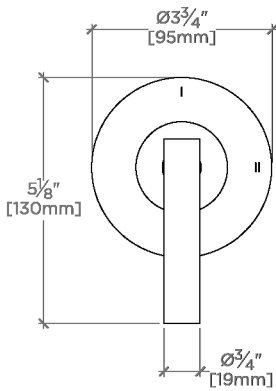
BOND

B2P120

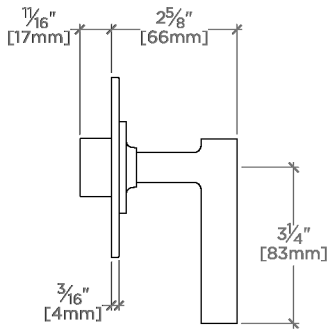
Bond Solo Series Two Way Pressure Balance Diverter Trim
with Roman Numerals and Straight Lever Handle



TOP VIEW SCALE: 3"=1'-0"



FRONT VIEW SCALE: 3"=1'-0"



SIDE VIEW SCALE: 3"=1'-0"