

## NORMANDY

NOLV24

Normandy Drop In or Undermount Oval Hammered Copper  
Lavatory Sink 13 3/16" x 10 7/16" x 5 11/16"



SHOWN IN NORMANDY DROP IN OR UNDERMOUNT OVAL HAMMERED COPPER LAVATORY SINK 13 3/16" X 10 7/16" X 5 11/16" |  
NOLV24

## INSPIRATION

Like the antique French copper cookware that inspired them, our Normandy sinks lend a special warmth and richness to any environment. Each pure red copper design is hammered and polished by hand according to the old French tradition.

## PRODUCT FEATURES

Handcrafted in France from sheets of copper and formed in individual molds.

The Normandy sinks are finished with a burnishing hammer and polished by hand.

Suitable for master baths and powder rooms.

## TECHNICAL DETAILS

ADA Compliance: When installed per ADA guidelines  
Bowl Shape: Oval  
Depth To Overflow: 2 1/2"  
Depth/Width: 10 7/16"  
Drain Hole Depth: 1.42"  
Drain Hole Diameter: 1.77"  
Drain Style: Center Drain  
Height: 5 11/16"  
Installation Type: Drop In or Undermount  
Length: 13 3/16"  
Number Of Holes: Two Hole  
Outer Rim Shape: Oval  
Overflow Opening: Yes  
Primary Material: Hammered Copper  
Suggested Application: Bath

## CODES &amp; STANDARDS

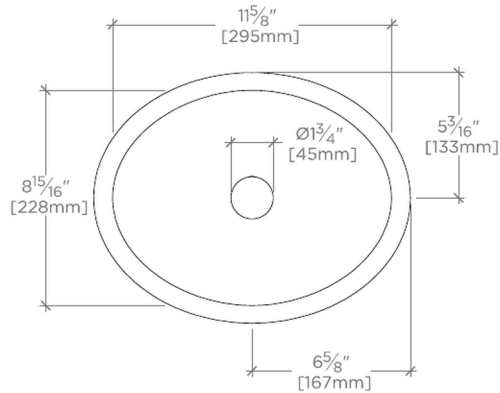
## CERTIFICATIONS

Dimensions of sinks are nominal and are subject to slight  
variations.  
**PRODUCT (NOTES)**

## NORMANDY

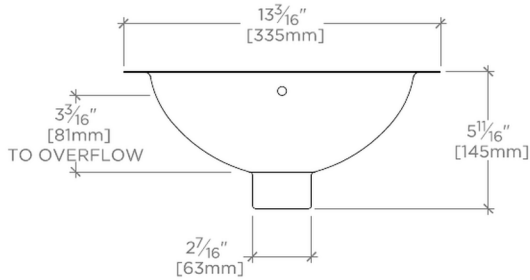
NOLV24

Normandy Drop In or Undermount Oval Hammered Copper  
Lavatory Sink 13 3/16" x 10 7/16" x 5 11/16"



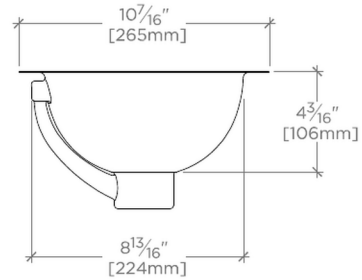
TOP VIEW

SCALE: 1 1/2"=1'-0"



FRONT VIEW

SCALE: 1 1/2"=1'-0"



SIDE VIEW

SCALE: 1 1/2"=1'-0"