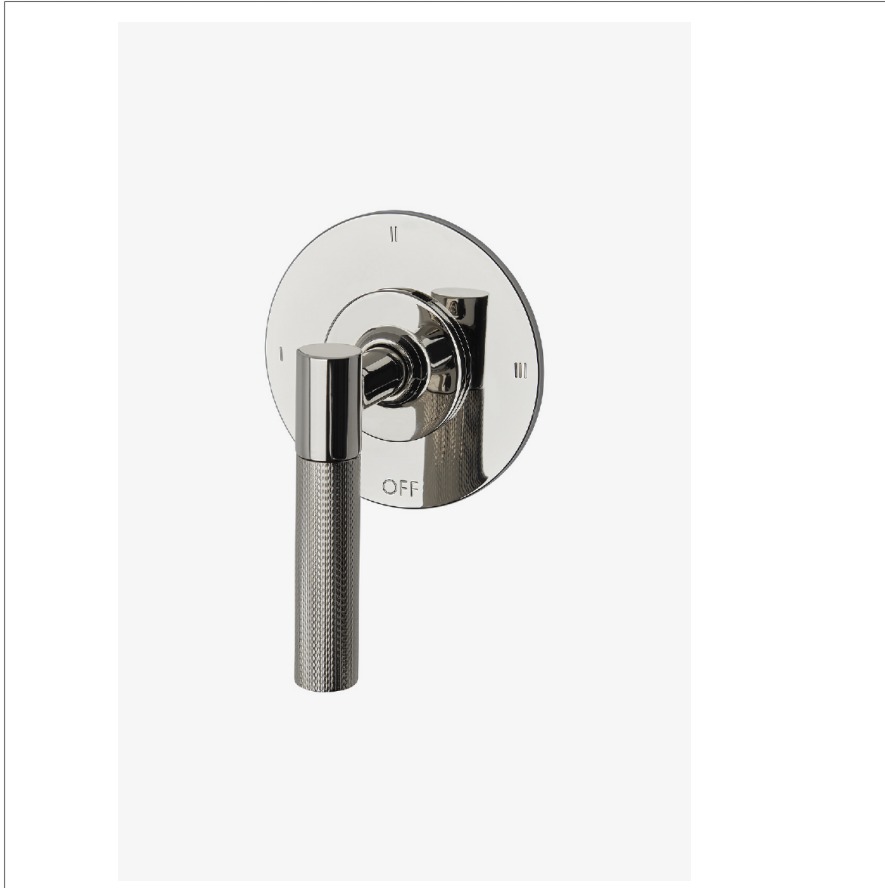


Bond

B3T12C

Bond Union Series Three Way Thermostatic Diverter Trim
with Roman Numerals and Guilloche Link Lever Handle



SHOWN IN BOND UNION SERIES THREE WAY THERMOSTATIC DIVERTER TRIM WITH ROMAN NUMERALS AND GUILLOCHE LINK
LEVER HANDLE | B3T12C

INSPIRATION

Bond draws inspiration from the Aesthetic Movement, rare vintage lighters, and modern industrial design. The result is a contemporary collection with a soulful quality that inhabits the full range of modern style, from austere minimalism to warm contemporary.

PRODUCT FEATURES

Lever Handle

For use with a Thermostatic shower system and three waterway outlets such as a handshower, shower head, and tub spout

Features Guilloche Link Pattern Lever Handle

Stocked in Nickel and Brass

Requires rough valve, sold separately: GUDV66

TECHNICAL DETAILS

ADA Compliance: Yes
Integrated Diverter: N
Number Of Holes: One Hole
Primary Material: Brass

CODES & STANDARDS

ASME A112.18.1/CSA B125.1, State of MA

CERTIFICATIONS

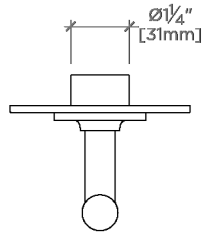


PRODUCT (NOTES)

Bond

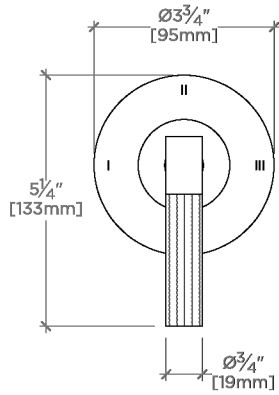
B3T12C

Bond Union Series Three Way Thermostatic Diverter Trim
with Roman Numerals and Guilloche Link Lever Handle



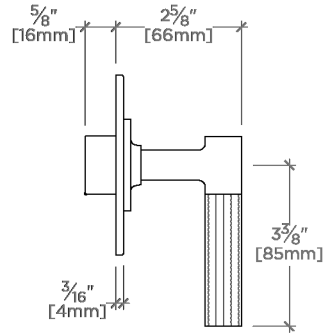
TOP VIEW

SCALE: 3"=1'-0"



FRONT VIEW

SCALE: 3"=1'-0"



SIDE VIEW

SCALE: 3"=1'-0"