

Normandy

NOLV57

Normandy Drop In or Undermount Rectangular Hammered Copper Lavatory Sink 15 3/8" x 11 7/16" x 5 1/8"



SHOWN IN NORMANDY DROP IN OR UNDERMOUNT RECTANGULAR HAMMERED COPPER LAVATORY SINK 15 3/8" X 11 7/16" X 5 1/8" | NOLV57

TECHNICAL DETAILS

ADA Compliance: When installed per ADA guidelines
Bowl Shape: Rectangular
Depth/Width: 291 mm
Drain Style: Center Drain
Height: 130 mm
Installation Type: Drop In or Undermount
Length: 391 mm
Number Of Holes: Two Hole
Outer Rim Shape: Rectangular
Primary Material: Hammered Copper
Suggested Application: Bath

INSPIRATION

Modeled after antique French copper cookware, each Normandy sink is hammered and polished by hand according to old French tradition. The process involves over 40 steps and countless hours of craftsmanship, creating strikingly authentic, one-of-a-kind designs.

CODES & STANDARDS

PRODUCT FEATURES

Handcrafted in France from sheets of copper and formed in individual molds.

The Normandy sinks are finished with a burnishing hammer and polished by hand.

Suitable for master baths and powder rooms.

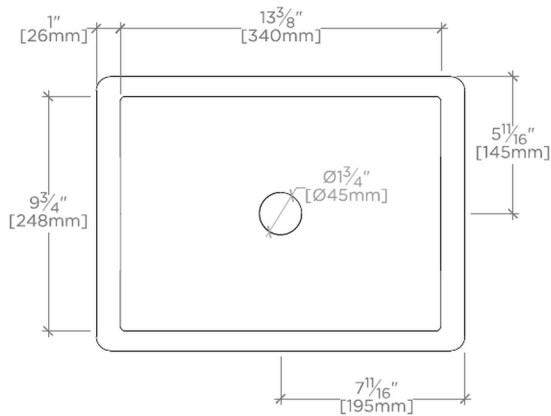
CERTIFICATIONS

Dimensions of sinks are nominal and are subject to slight variation.
PRODUCT (NOTES)

Normandy

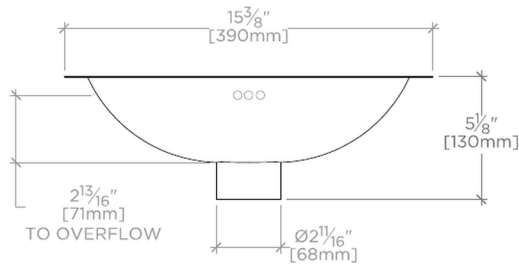
NOLV57

Normandy Drop In or Undermount Rectangular Hammered Copper Lavatory Sink 15 3/8" x 11 7/16" x 5 1/8"



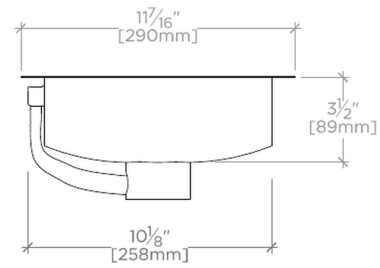
TOP VIEW

SCALE: 1/2"=1'-0"



FRONT VIEW

SCALE: 1/2"=1'-0"



SIDE VIEW

SCALE: 1/2"=1'-0"