



ESTB. 1978

WATERWORKS

Cottage



Traditional elegance

Handmade with rounded edges, this ceramic tile collection includes cracked glazes, textured patterns and architectural moldings that bring depth and dimension to the bath.



ESTB. 1978

WATERWORKS

Cottage

FIELD TILE



3" X 6"
CTF036



3" X 12"
CTF312



6" X 6"
CTF066



6" X 9" *
CTF069



6" X 18" **
CTF618

* Available in Dover White, Canvas and Shale

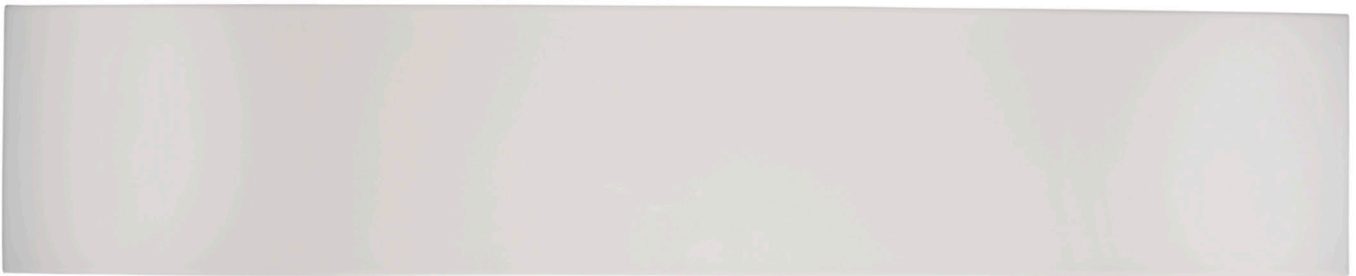
** 6x18" Available in Dover White, Canvas, Shale and with glazed edge options



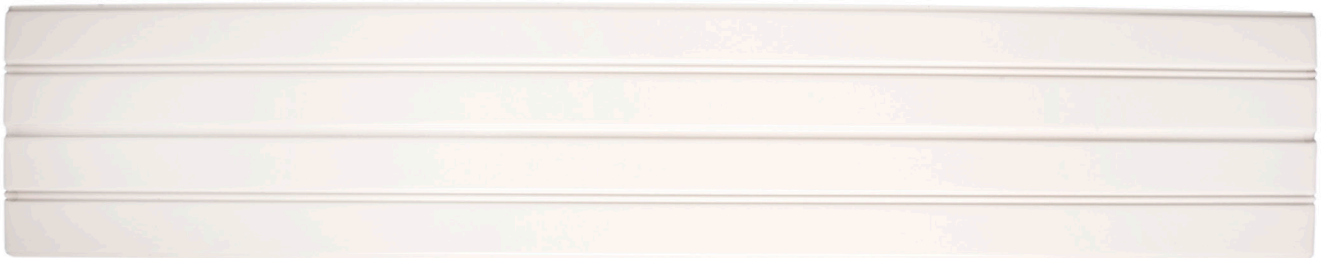
ESTB. 1978

WATERWORKS

Cottage



6" X 30" BATTEN PLANK†
CTBP63



6" X 30" WAINSCOT PLANK†
CTDFOW



1" X 2" STAGGERED MOSAIC†
CTSM12

- * Available in Dover White, Canvas and Shale
- ** 6x18" Available in Dover White, Canvas, Shale and with glazed edge options
- † Available in Dover White only



ESTB. 1978

WATERWORKS

Cottage



- * Available in Dover White, Canvas and Shale
- ** 6x18" Available in Dover White, Canvas, Shale and with glazed edge options
- † Available in Dover White only



ESTB. 1978

WATERWORKS

Cottage

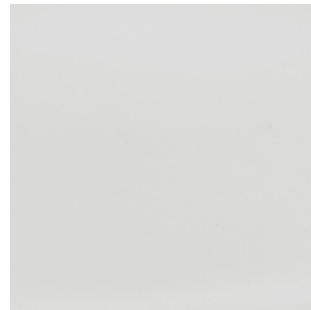
PALETTE



Dover White Glossy V2



Canvas Glossy Crackle V3



Blanca Glossy V2



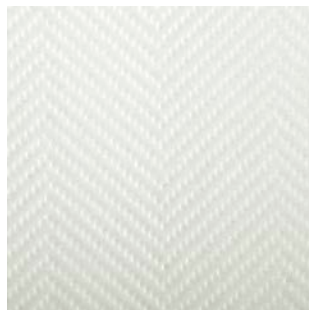
Overcast Glossy V3



Shale Glossy V3



Smog Glossy Crackle V3



Coutil in Shale Glossy V3

3" x 12" only CTDFCI

^A See variation chart



ESTB. 1978

WATERWORKS

Item Index

Cottage	Blanca	Canvas	Dover	Overcast	Shale	Smog	Coutil (Shale)	Sample Available
Variation *	2	3	2	3	2	3	2	
Field								
3x6	X	X	X	X	X	X		X
3x12	X	X	X	X	X	X	X	X
6x6		X	X		X			X
6x9		X	X		X			X
6x18		X	X		X			X
6x30 Batten Plank			X					
6x30 Wainscot Plank			X					X
Trim								
Bullnose 3" x 6" Single (Long)	X	X	X	X	X	X		
Bullnose 3" x 6" Single (Short)	X	X	X	X	X	X		
Bullnose 3" x 6" Corner (Left)	X	X	X	X	X	X		
Bullnose 3" x 6" Corner (Right)	X	X	X	X	X	X		
Bullnose 3" x 12" Single (Long)	X	X	X	X	X	X	X	
Bullnose 3" x 12" Single (Short)	X	X	X	X	X	X	X	
Bullnose 3" x 12" Corner (Left)	X	X	X	X	X	X	X	
Bullnose 3" x 12" Corner (Right)	X	X	X	X	X	X	X	
Bullnose 6" x 6" Single		X	X		X			
Bullnose 6" x 6" Corner		X	X		X			
Bullnose 6" x 9" Single (Long)		X	X		X			
Bullnose 6" x 9" Single (Short)		X	X		X			
Bullnose 6" x 9" Corner (Left)		X	X		X			
Bullnose 6" x 9" Corner (Right)		X	X		X			
6" x 18" Corner (Left) Edge Glazed		X	X		X			
6" x 18" Corner (Right) Edge Glazed		X	X		X			
Quarter Round 1" x 6"	X	X	X	X	X	X		X
Rails								
Batten Rail 2 3/4" x 12" *			X					X
Normandy Rail 2" x 6"		X	X		X			X
Universal Rail 1 1/2" x 6"	X	X	X	X	X	X		X
Wainscot Rail 3" x 12" *			X					X
Windsor Rail 2 1/4" x 6"			X					X
Bases								
Batten Base 6" x 12" *			X					X
Universal Base 6" x 6"	X	X	X	X	X	X		X
Wainscot Base 6" x 12" *			X					X
Liners								
Cove Liner 3/4" x 6"			X					X
Westminster Liner 1/2" x 6"			X					X
Mosaic								
1" x 2" Staggered Mosaic			X					X

*SEE COLOR VARIATION CHART

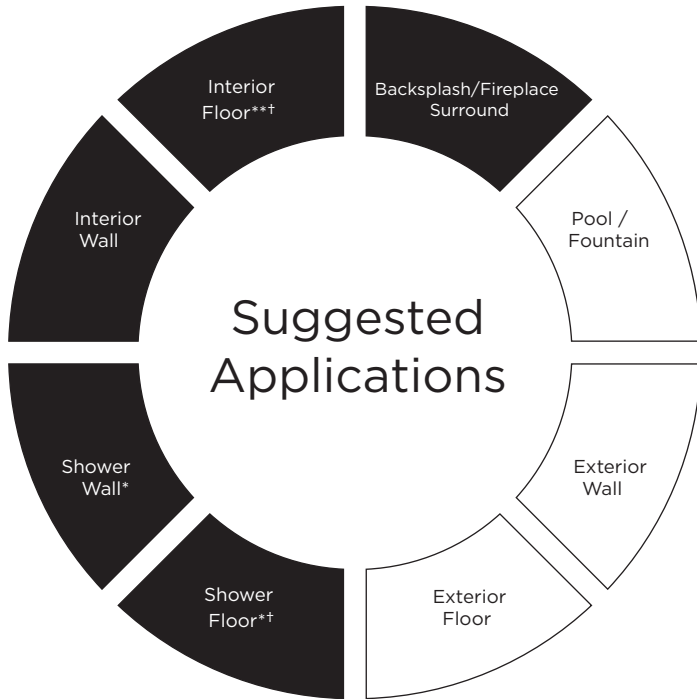
* 4" SAMPLES AVAILABLE; FULL SIZE CHARGEABLE SAMPLES AVAILABLE FOR ORDER ON SALES ORDER



ESTB. 1978

WATERWORKS

Cottage



● Recommended Use ○ Not Recommended Use

Variation Level

V1	V2	V3	V4	V5

1. MINIMAL, IF ANY COLOR VARIATION
2. SLIGHT COLOR VARIATION CAN BE EXPECTED
3. A MEDIUM RANGE OF COLOR VARIATION IS TYPICAL; DARKER AND LIGHTER TONES ARE EVIDENT
4. CONSIDERABLE COLOR VARIATION IS TYPICAL; FROM DARKS TO LIGHTS AND SOME TONE CHANGES
5. EXTREME COLOR VARIATION CAN BE EXPECTED - THE RANGE IS OFTEN DIFFERING BUT COMPLEMENTARY

PLEASE REFER TO COLLECTION TEARSHEET FOR VARIATION LEVEL BY COLOR.

SAMPLING IS RECOMMENDED TO UNDERSTAND VARIATION OF MATERIAL

Product Variation

Color, size and surface variation is an inherent characteristic of our handmade tile and should be expected. Refer to our color variation ranking for further details. Please inquire for additional information.

Custom Opportunities Available

Minimums and extended lead-times may apply.

Please contact your local Waterworks showroom or our direct sales team at 800.899.6757.

Application Notes

* Suitable for use in wet environments, including steam showers, if properly installed, sealed, and maintained

** Suitable for light traffic interior floors ONLY

† Small format ONLY (Mosaics only)

Installation / Maintenance

- WATERWORKS ASSUMES NO RESPONSIBILITY FOR INSTALLATION
- Installation constitutes acceptance.
- Tile should be installed by a licensed and experienced tile setter.
- Refer to TCNA (Tile Council of North America) or ANSI standards for installation guidelines.
- All tile must be inspected PRIOR to installation.
- Dry lay tile prior to installation to allow for blending of color variation.
- Tile should be sealed PRIOR to grouting. Dark grout can stain crackle tiles.
- Waterworks recommends a grouted test panel prior to installation to understand final appearance of grouted material.
- Seal grout joints after installation and maintain regularly.

Thickness

*Nominal: +/- 1/6"

Suggested Grout Lines

1/8"