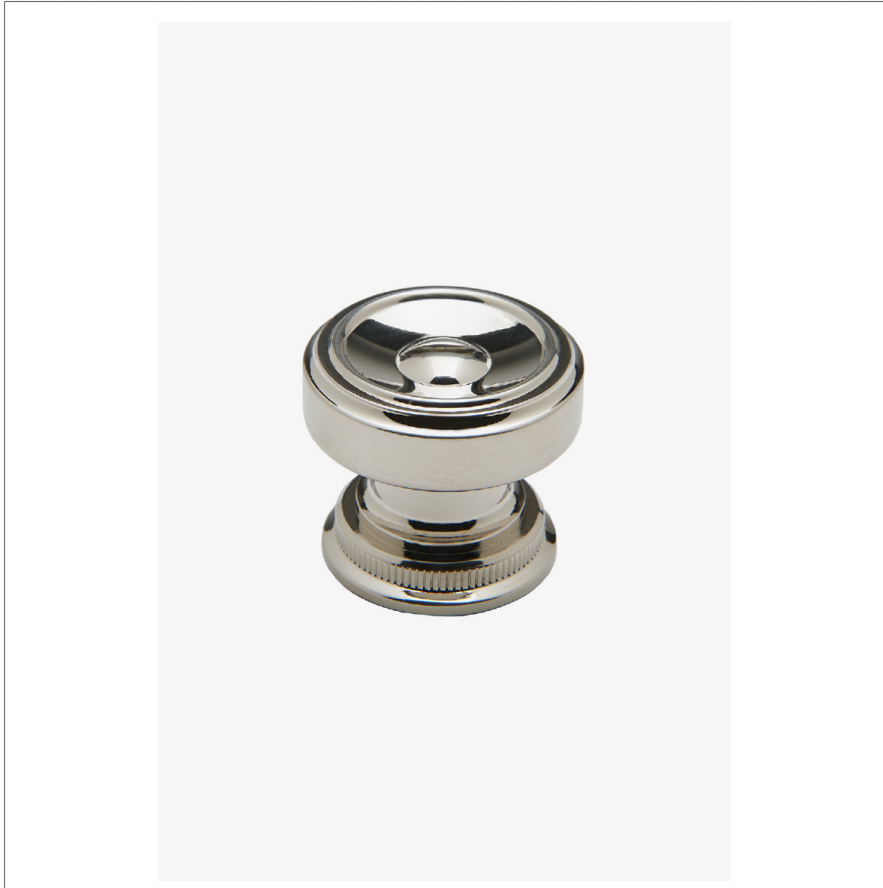


R.W. ATLAS

RWHW10

R.W. Atlas 1 1/4" Rosette Knob



SHOWN IN R.W. ATLAS 1 1/4" ROSETTE KNOB | RWHW10

TECHNICAL DETAILS

Hardware Primary Material: Brass
Hardware Shape: Knob
Primary Material: Brass
Suggested Application: All Applications

INSPIRATION

Powerful shapes, exquisite materials, and unique aesthetic details define R.W. Atlas. This groundbreaking collection pairs American ingenuity with European craftsmanship, delivering refined industrial-inspired character that fits seamlessly into any space.

CODES & STANDARDS

PRODUCT FEATURES

Solid Brass

Machined and hand-polished

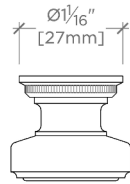
Made in Portugal

Includes 1 x M4 Pan Head Slot 1" Machine Screw and 1 x M4 Pan Head Slot 1 1/2" Machine Screw

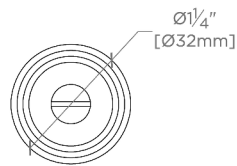
CERTIFICATIONS

Replacement Screws available
PRODUCT (NOTES)

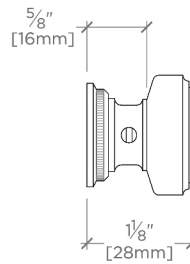
R.W. Atlas 1 1/4" Rosette Knob



TOP VIEW SCALE: 6"=1'-0"



FRONT VIEW SCALE: 6"=1'-0"



SIDE VIEW SCALE: 6"=1'-0"