

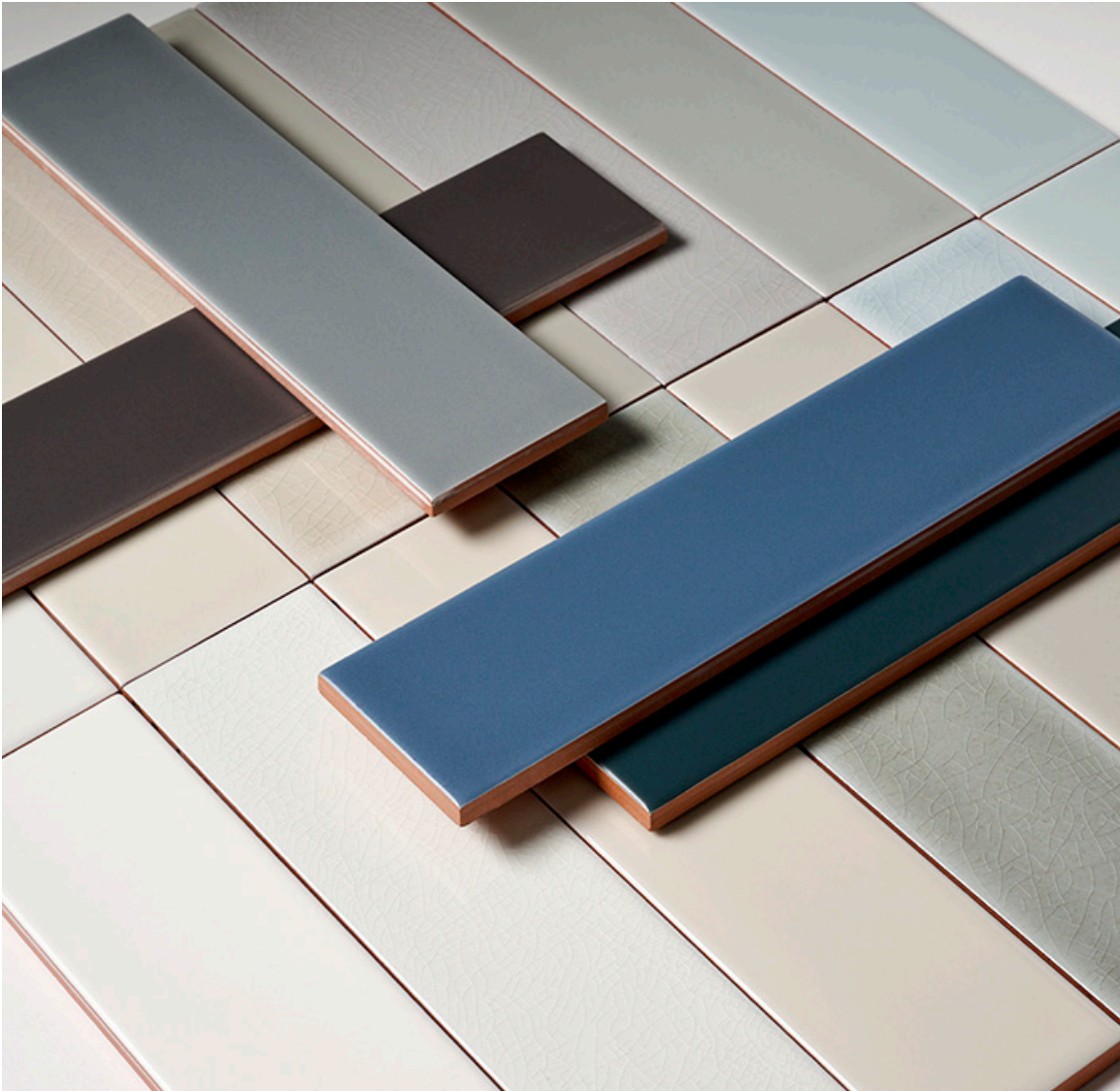


ESTB. 1978

WATERWORKS

---

## Gemma



Introducing Gemma, a new ceramic tile family with a transitional-to-modern feel. Uniquely, each shade in the collection's focused palette comes in multiple finishes, giving you the flexibility to use the same color in different textures for different rooms. Made in Italy in two sizes; the longer planks create a more modern-looking installation.



ESTB. 1978

# WATERWORKS

---

## Gemma

### FIELD TILE



3" X 6" \*  
GMF036



2 1/2" X 10 1/4" \*  
GMF210

### TRIM



MINI QUARTER ROUND  
3/8" X 8"  
GMQR01



GRANATO BASE  
6" X 12"  
GMBS01

\* Coordinating bullnose or glazed edge available



ESTB. 1978

# WATERWORKS

## Gemma

### PALETTE



Scallop Glossy Solid V3



Grotto Glossy Solid V3



Coin Glossy Solid V3



Harbor Glossy Solid V3



Scallop Glossy Crackle V3



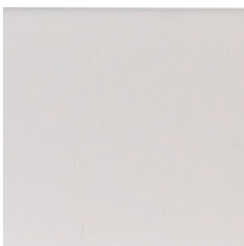
Grotto Glossy Crackle V3



Coin Glossy Crackle V3



Harbor Glossy Crackle V3



Scallop Matte Solid V3



Grotto Matte Solid V3



Coin Matte Solid V3



Harbor Matte Solid V3

\* See variation chart on page 5  
\*\* Note: Select colors available in select sizes.



ESTB. 1978

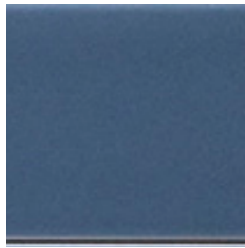
# WATERWORKS

## Gemma

### PALETTE



Robin's Egg Glossy Solid V3



Bluejean Glossy Solid V3



Chestnut Matte Solid V3



Robin's Egg Glossy Crackle V3



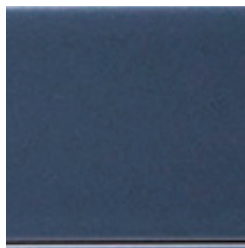
Bluejean Glossy Crackle V3



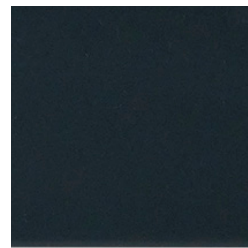
Iron Matte Solid V3



Robin's Egg Matte Solid V3



Bluejean Matte Solid V3



Armor Matte Solid V3

\* See variation chart on page 5  
\*\* Note: Select colors available in select sizes.



ESTB. 1978

# WATERWORKS

## Gemma

COLOR	SCALLOP	GROTTO	ROBIN'S EGG	COIN	HARBOR	BLUE JEAN	IRON	ARMOR	CHESTNUT
Finish*	C, S, M	C, S, M	C, S, M	C, S, M	C, S, M	C, S, M	M	M	M
Variation*	3	3	3	3	3	3	3	3	3
<b>FIELD</b>									
2 1/2 X 10 1/4	X	X	X	X	X	X	X	X	X
3 X 6	X	X	X						
<b>TRIM</b>									
Bullnose 3" x 6" Single (Long)	X	X	X						
Bullnose 3" x 6" Single (Short)	X	X	X						
Bullnose 3" x 6" Corner (Left)	X	X	X						
Bullnose 3" x 6" Corner (Right)	X	X	X						
Bullnose 2 1/2" x 10 1/4" Single (Long)	X								
Bullnose 2 1/2" x 10 1/4" Single (Short)	X								
Bullnose 2 1/2" x 10 1/4" Corner (Left)	X								
Bullnose 2 1/2" x 10 1/4" Corner (Right)	X								
Glazed Edge 2 1/2" x 10 1/4" Single (Long)				X	X	X	X	X	X
Glazed Edge 2 1/2" x 10 1/4" Single (Short)				X	X	X	X	X	X
Glazed Edge 2 1/2" x 10 1/4" Corner (Left)				X	X	X	X	X	X
Glazed Edge 2 1/2" x 10 1/4" Corner (Right)				X	X	X	X	X	X
Mini Quarter Round 3/8" x 8"	X	X	X	X	X	X	X	X	X
<b>BASE</b>									
Granato Base 6" x 12"	X	X	X	X	X	X	X	X	X

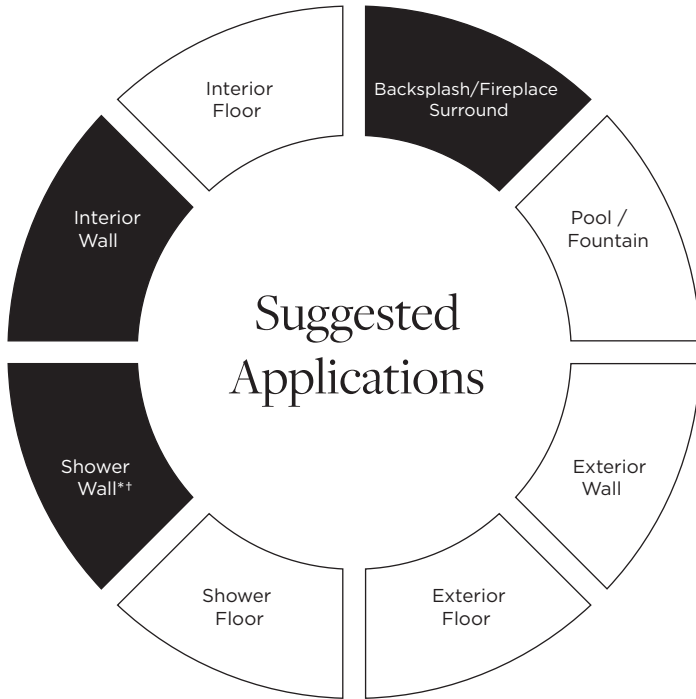
\*C=Crackle - S=Solid - M=Matte



ESTB. 1978

# WATERWORKS

## Gemma



● Recommended Use      ○ Not Recommended Use

**Variation Level**

V1	V2	V3	V4	V5

1. MINIMAL, IF ANY COLOR VARIATION
2. SLIGHT COLOR VARIATION CAN BE EXPECTED
3. A MEDIUM RANGE OF COLOR VARIATION IS TYPICAL; DARKER AND LIGHTER TONES ARE EVIDENT
4. CONSIDERABLE COLOR VARIATION IS TYPICAL; FROM DARKS TO LIGHTS AND SOME TONE CHANGES
5. EXTREME COLOR VARIATION CAN BE EXPECTED - THE RANGE IS OFTEN DIFFERING BUT COMPLEMENTARY

**PLEASE REFER TO COLLECTION TEARSHEET FOR VARIATION LEVEL BY COLOR.**

**SAMPLING IS RECOMMENDED TO UNDERSTAND VARIATION OF MATERIAL**

### Product Variation

Color, size and surface variation is an inherent characteristic of our handmade tile and should be expected. Refer to our color variation ranking for further details. Please inquire for additional information.

### Application Notes

\* All finishes suitable for use in wet environments if properly installed, sealed, and maintained. All finishes suitable for use in steam showers if properly installed, sealed and maintained.

† Suitable for tropical/subtropical climates ONLY if properly installed, sealed and maintained.

### Installation / Maintenance

- WATERWORKS ASSUMES NO RESPONSIBILITY FOR INSTALLATION
- Installation constitutes acceptance.
- Tile should be installed by a licensed and experienced tile setter.
- Refer to TCNA (Tile Council of North America) or ANSI standards for installation guidelines.
- All tile must be inspected PRIOR to installation.
- Dry lay tile prior to installation to allow for blending of color variation.
- Tile should be sealed PRIOR to grouting. Dark grout can stain crackle tile.
- Waterworks recommends a grouted test panel prior to installation to understand final appearance of grouted materials
- Re-seal tile and grout after installation and maintain regularly.

Thickness

\*Nominal: +/- 1/6"

**Suggested Grout Lines**

1/16" - 1/8"