

HENRY

HTH403

Henry Integrated Thermostatic and Two Way Diverter Trim with Coin Edge Cross Handles

TECHNICAL DETAILS

ADA Compliance: Yes
Fittings Hole Diameter: 2 1/2"
Integrated Diverter: Y
Number Of Holes: Two Hole
Primary Material: Brass



SHOWN IN HENRY INTEGRATED THERMOSTATIC AND TWO WAY DIVERTER TRIM WITH COIN EDGE CROSS HANDLES | HTH403

INSPIRATION

Influenced by the connection of industry and art Henry easily transitions between modern, traditional, utilitarian and classic settings.

CODES & STANDARDS

ASME A112.18.1/CSA B125.1, State of MA

PRODUCT FEATURES

Coin Edge Cross Handles

Allows bather to adjust temperature of all waterway outlets with a hot limit safety stop providing anti-scald protection

Stocked in Brass, Chrome, Nickel and Dark Nickel

Requires valve rough sold separately

CERTIFICATIONS

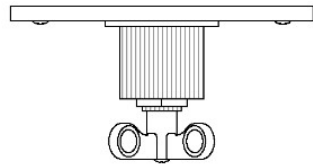


PRODUCT (NOTES)

HENRY

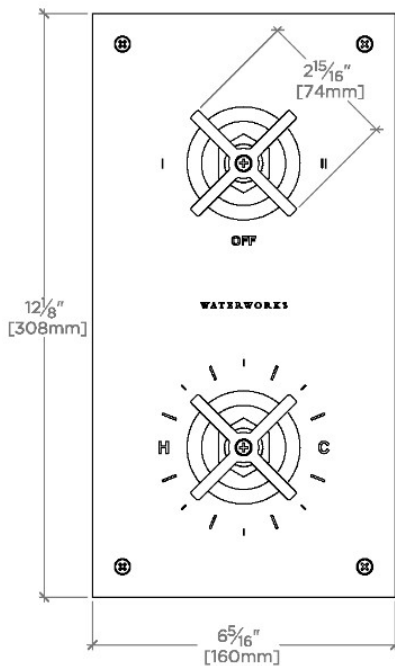
HTH403

Henry Integrated Thermostatic and Two Way Diverter Trim
with Coin Edge Cross Handles



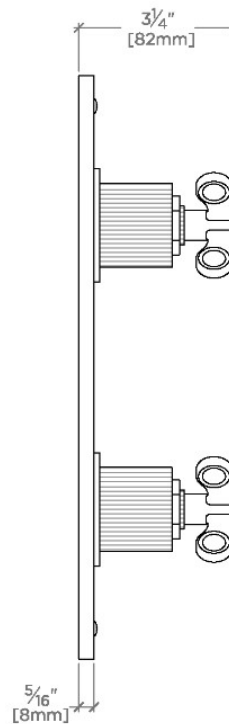
TOP VIEW

SCALE: 3"=1'-0"



FRONT VIEW

SCALE: 3"=1'-0"



SIDE VIEW

SCALE: 3"=1'-0"