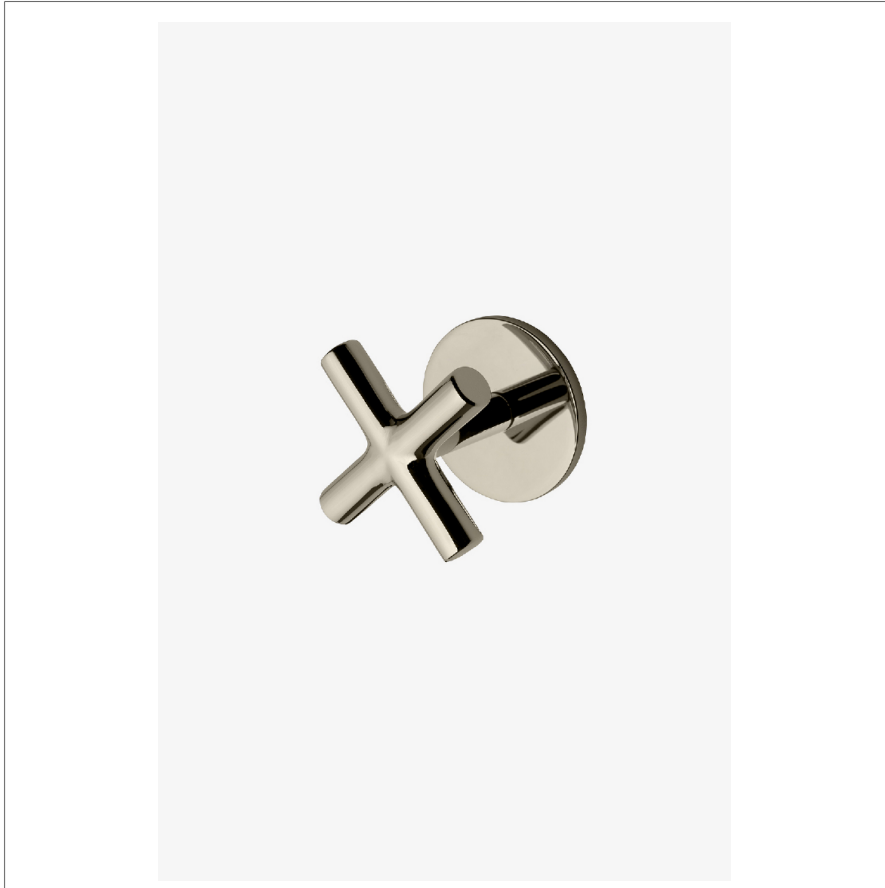


FLYTE

FLVC40

Flyte Volume Control with Cross Handle



SHOWN IN FLYTE VOLUME CONTROL WITH CROSS HANDLE | FLVC40

TECHNICAL DETAILS

ADA Compliance: Yes
 Depth/Width: 2 5/16"
 Escutcheon Primary Material: Brass
 Fittings Hole Diameter: 1 3/8"
 Height: 2 3/8"
 Integrated Diverter: N
 Integrated Spray: N
 Length: 2 3/8"
 Number Of Handles: One
 Pivot: N
 Primary Material: Brass
 Spout Swivel: N
 Spray Included In Unit: N
 Suggested Application: Bath

INSPIRATION

Pure Modernism. Like minimalist works of art, the elegant proportions of these light, fluid elements bring sculptural reference to a room.

CODES & STANDARDS

ASME A112.18.1/CSA B125.1, State of MA

PRODUCT FEATURES

Cross Handles

Used to Control Water Flow to a Single Waterway Outlet

Stocked in Chrome, Nickel, Brass and Matte Black

Requires rough valve, Sold separately: GUV18/GUVC19 or GUV16/GUVC17

CERTIFICATIONS



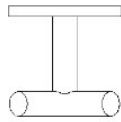
PRODUCT (NOTES)

Required 1/2" valve rough Hot -GUV18 or Cold -GUVC19, sold separately.

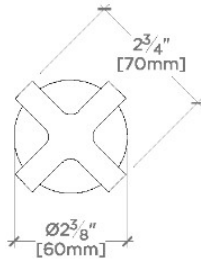
FLYTE

FLVC40

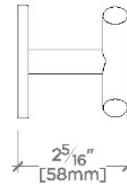
Flyte Volume Control with Cross Handle



TOP VIEW SCALE: 3"=1'-0"



FRONT VIEW SCALE: 3"=1'-0"



SIDE VIEW SCALE: 3"=1'-0"