



ESTB. 1978

WATERWORKS

---

## Cottage



### Traditional elegance

Handmade with rounded edges, this ceramic tile collection includes crackled glazes, textured patterns and architectural moldings that bring depth and dimension to the bath.



ESTB. 1978

# WATERWORKS

---

## Cottage

### FIELD TILE



3" X 6"  
CTF036



3" X 12"  
CTF312



6" X 6"  
CTF066



6" X 9" \*  
CTF069



6" X 18" \*\*  
CTF618

\* Available in Dover White, Canvas and Shale

\*\* 6x18" Available in Dover White, Canvas, Shale and with glazed edge options

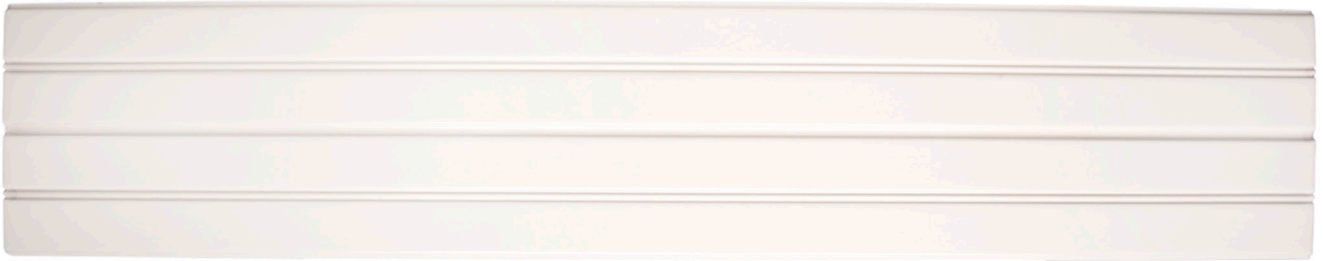


ESTB. 1978

# WATERWORKS

---

## Cottage



6" X 30" WAINSCOT PLANK†  
CTDFOW



1" X 2" STAGGERED MOSAIC†  
CTSM12

\* Available in Dover White, Canvas and Shale

\*\* 6x18" Available in Dover White, Canvas, Shale and with glazed edge options

† Available in Dover White only



ESTB. 1978

# WATERWORKS

## Cottage



\* Available in Dover White, Canvas and Shale

\*\* 6x18" Available in Dover White, Canvas, Shale and with glazed edge options

† Available in Dover White only

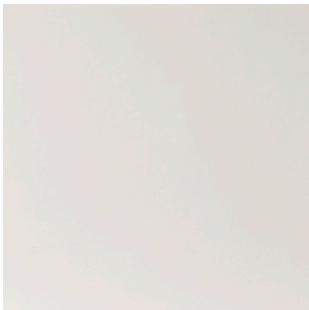


ESTB. 1978

# WATERWORKS

## Cottage

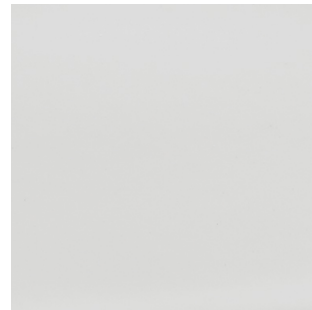
### PALETTE



DOVER WHITE GLOSSY V2



CANVAS GLOSSY CRACKLE V3



BLANCA GLOSSY V2



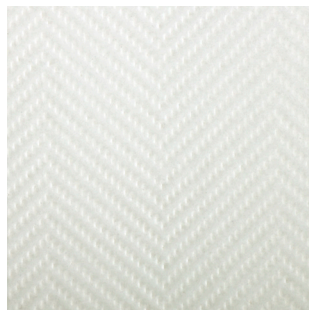
Overcast Glossy V3



Shale Glossy V3



Smog Glossy Crackle V3



Countil in Shale Glossy V3  
3" x 12" only CTDfC1

<sup>A</sup> See variation chart



ESTB. 1978

# WATERWORKS

	Blanca	Canvas	Dover	Overcast	Shale	Smog	Sample Available
Variation *	2	3	2	3	2	3	
Field							
1 3/4" x 7 3/8"							X
3x6	X	X	X	X	X	X	X
3x12	X	X	X	X	X	X	X
6x6		X	X		X		X
6x9		X	X		X		X
6x18		X	X		X		X
6x30 Wainscot Plank			X				X
Trim							
Bullnose 1 3/4" x 7 3/8" Single (Long)							
Bullnose 1 3/4" x 7 3/8" Single (Short)							
Bullnose 1 3/4" x 7 3/8" Single (Left)							
Bullnose 1 3/4" x 7 3/8" Single (Right)							
Bullnose 3" x 6" Single (Long)	X	X	X	X	X	X	
Bullnose 3" x 6" Single (Short)	X	X	X	X	X	X	
Bullnose 3" x 6" Corner (Left)	X	X	X	X	X	X	
Bullnose 3" x 6" Corner (Right)	X	X	X	X	X	X	
Bullnose 3" x 12" Single (Long)	X	X	X	X	X	X	
Bullnose 3" x 12" Single (Short)	X	X	X	X	X	X	
Bullnose 3" x 12" Corner (Left)	X	X	X	X	X	X	
Bullnose 3" x 12" Corner (Right)	X	X	X	X	X	X	
Bullnose 6" x 6" Single		X	X		X		
Bullnose 6" x 6" Corner		X	X		X		
Bullnose 6" x 9" Single (Long)		X	X		X		
Bullnose 6" x 9" Single (Short)		X	X		X		
Bullnose 6" x 9" Corner (Left)		X	X		X		
Bullnose 6" x 9" Corner (Right)		X	X		X		
6" x 18" Corner (Left) Edge Glazed		X	X		X		
6" x 18" Corner (Right) Edge Glazed		X	X		X		
Quarter Round 1" x 6"	X	X	X	X	X	X	X
Rails							
Normandy Rail 2" x 6"		X	X		X		X
Universal Rail 1 1/2" x 6"	X	X	X	X	X	X	X
Wainscot Rail 3" x 12" *			X				X
Bases							
Universal Base 6" x 6"	X	X	X	X	X	X	X
Wainscot Base 6" x 12" *			X				X
Liners							
Cove Liner 3/4" x 6"			X				X
Westminster Liner 1/2" x 6"			X				X
Mosaic							
1" x 2" Staggered Mosaic			X				X
1 3/4" Stacked							X

\*SEE COLOR VARIATION CHART

\* 4" SAMPLES AVAILABLE; FULL SIZE CHARGEABLE SAMPLES AVAILABLE FOR ORDER ON SALES ORDER

MAY 2025

VISIT A SHOWROOM OR WATERWORKS.COM | 800.899.6757 U.S. / 0207.384.4000 U.K.

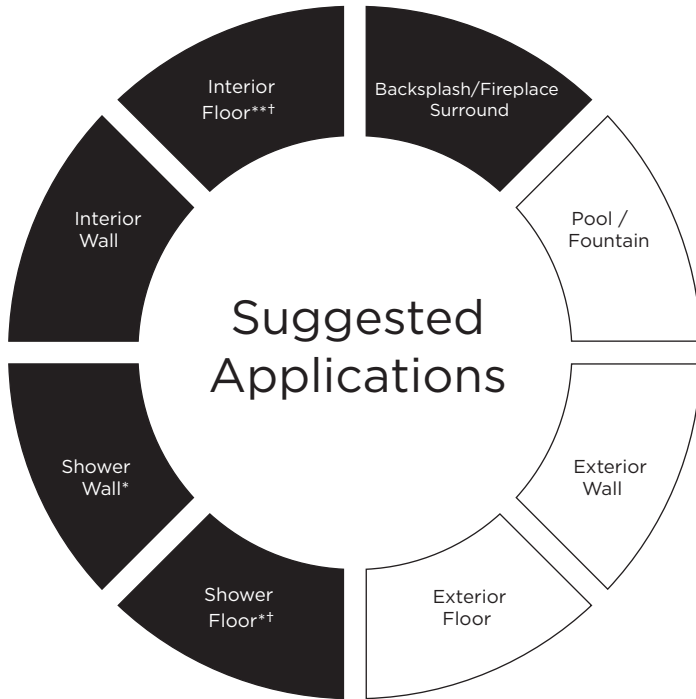
6 OF 7



ESTB. 1978

# WATERWORKS

## Cottage



● Recommended Use ○ Not Recommended Use

### Application Notes

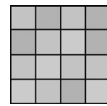
\* Suitable for use in wet environments, including steam showers, if properly installed, sealed, and maintained

\*\* Suitable for light traffic interior floors ONLY

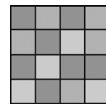
† Small format ONLY (Mosaics only)

### Variation Level

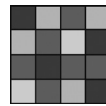
V1



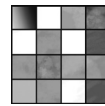
V2



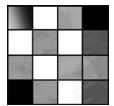
V3



V4



V5



1. MINIMAL, IF ANY COLOR VARIATION

2. SLIGHT COLOR VARIATION CAN BE EXPECTED

3. A MEDIUM RANGE OF COLOR VARIATION IS TYPICAL; DARKER AND LIGHTER TONES ARE EVIDENT

4. CONSIDERABLE COLOR VARIATION IS TYPICAL; FROM DARKS TO LIGHTS AND SOME TONE CHANGES

5. EXTREME COLOR VARIATION CAN BE EXPECTED - THE RANGE IS OFTEN DIFFERING BUT COMPLEMENTARY

### Thickness



\*Nominal: +/- 1/8"

### Suggested Grout Lines

1/8"

### Installation / Maintenance

- WATERWORKS ASSUMES NO RESPONSIBILITY FOR INSTALLATION
- Installation constitutes acceptance.
- Tile should be installed by a licensed and experienced tile setter.
- Refer to TCNA (Tile Council of North America) or ANSI standards for installation guidelines.
- All tile must be inspected PRIOR to installation.
- Dry lay tile prior to installation to allow for blending of color variation.
- Tile should be sealed PRIOR to grouting. Dark grout can stain crackle tiles.
- Waterworks recommends a grouted test panel prior to installation to understand final appearance of grouted material.
- Seal grout joints after installation and maintain regularly.