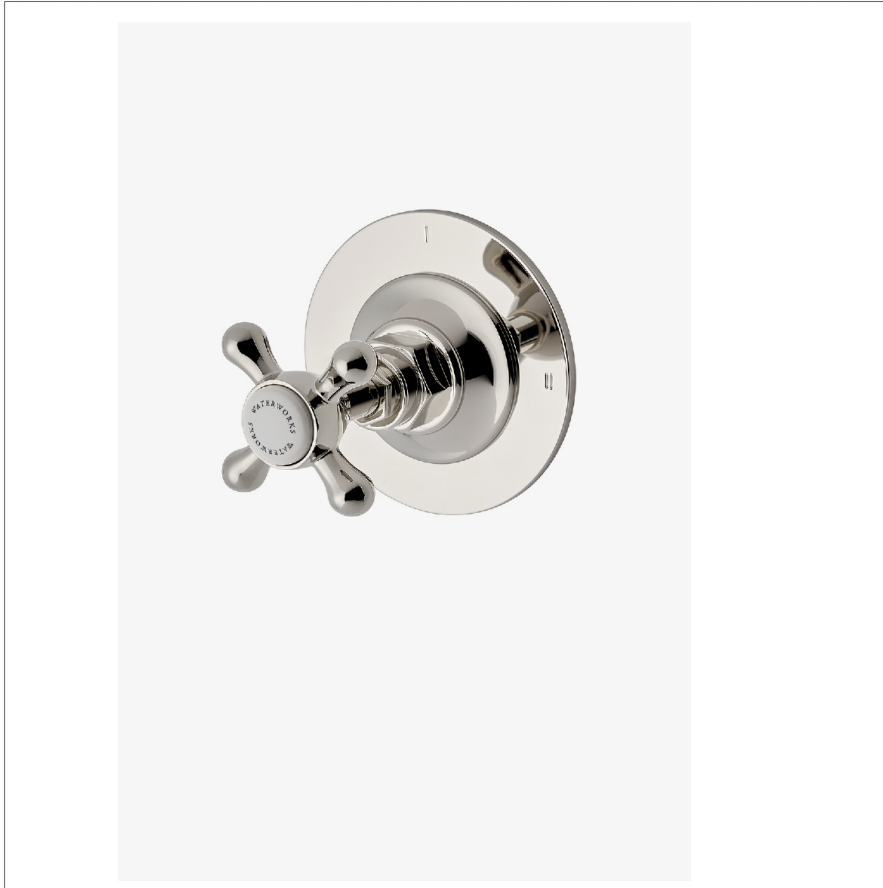


Highgate

HG2P01

Highgate Two Way Diverter Valve Trim for Pressure Balance
with Roman Numerals and Cross Handle



SHOWN IN HIGHGATE TWO WAY DIVERTER VALVE TRIM FOR PRESSURE BALANCE WITH ROMAN NUMERALS AND CROSS HANDLE
| HG2P01

TECHNICAL DETAILS

ADA Compliance: Yes
Fittings Hole Diameter: 51 mm
Handle Turn Angle: Quarter Turn
Number Of Holes: One Hole
Primary Material: Brass

INSPIRATION

Our take on old English style: simple, functional shapes, detailed with white porcelain indices and hexagonal accents for a timeless feel.

CODES & STANDARDS

HG2P01X, ASME A112.18.1/CSA B125.1, State of MA

PRODUCT FEATURES

Cross Handle

For Use With a Pressure Balance Shower System and Two Waterway Outlets

Features Roman Numerals Representing Outlet Position

Stocked in Chrome, Nickel, Brass

Requires valve rough sold separately

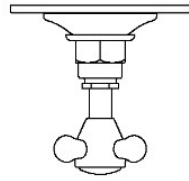
CERTIFICATIONS

PRODUCT (NOTES)

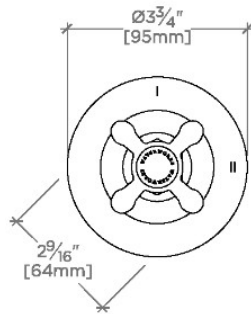
Highgate

HG2P01

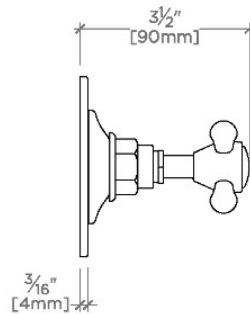
Highgate Two Way Diverter Valve Trim for Pressure Balance
with Roman Numerals and Cross Handle



TOP VIEW SCALE: 3"=1'-0"



FRONT VIEW SCALE: 3"=1'-0"



SIDE VIEW SCALE: 3"=1'-0"