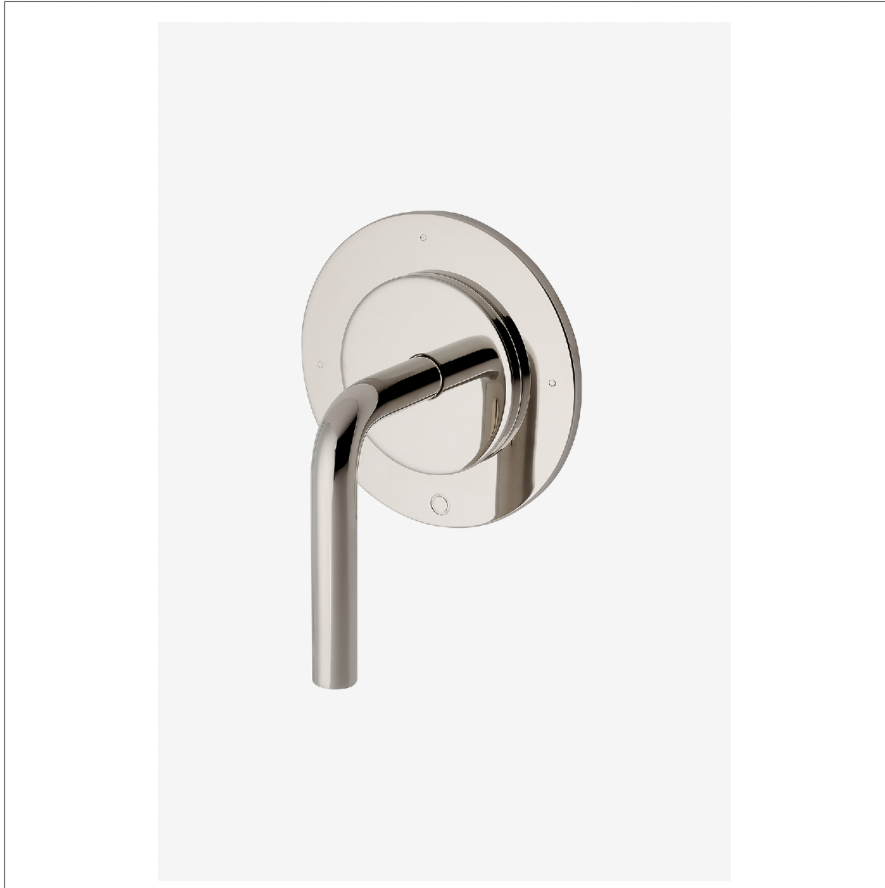


FLYTE

FL3T10

Flyte Three Way Diverter Valve Trim for Thermostatic with Modern Dots and Lever Handle



SHOWN IN FLYTE THREE WAY DIVERTER VALVE TRIM FOR THERMOSTATIC WITH MODERN DOTS AND LEVER HANDLE | FL3T10

TECHNICAL DETAILS

ADA Compliance: Yes
Fittings Hole Diameter: 2"
Handle Turn Angle: Full Turn
Number Of Holes: One Hole
Primary Material: Brass

INSPIRATION

Pure Modernism. Like minimalist works of art, the elegant proportions of these light, fluid elements bring sculptural reference to a room.

CODES & STANDARDS

FL3T10X, ASME A112.18.1/CSA B125.1

PRODUCT FEATURES

Lever Handle

For Use With a Thermostatic Shower System and Three Waterway Outlets

Features Modern Dots Representing Outlet Position

Stocked in Chrome, Nickel, Brass and Matte Black

Requires valve rough sold separately

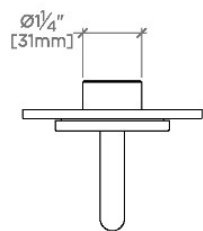
CERTIFICATIONS

PRODUCT (NOTES)

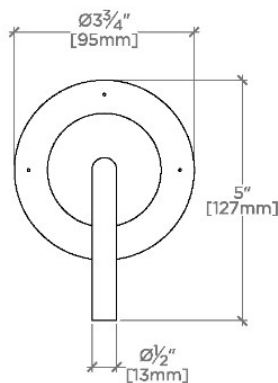
FLYTE

FL3T10

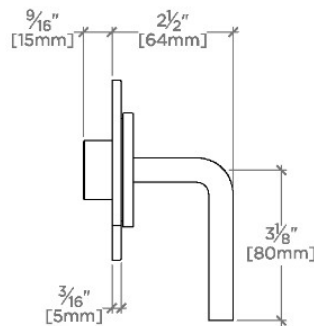
Flyte Three Way Diverter Valve Trim for Thermostatic with
Modern Dots and Lever Handle



TOP VIEW SCALE: 3"=1'-0"



FRONT VIEW SCALE: 3"=1'-0"



SIDE VIEW SCALE: 3"=1'-0"