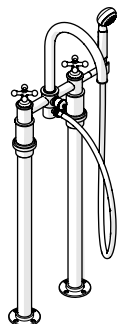


INSTALLATION GUIDELINES

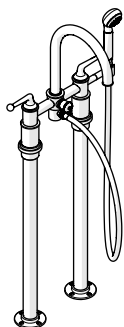
FLOOR MOUNTED EXPOSED TUB FILLER

DASH FLOOR MOUNTED EXPOSED TUB FILLER WITH METAL HANDSHOWER AND CROSS HANDLES



| |
|--------|
| STYLE |
| DSXT60 |

DASH FLOOR MOUNTED EXPOSED TUB FILLER WITH METAL HANDSHOWER AND LEVER HANDLES



| |
|--------|
| STYLE |
| DSXT70 |

IMPORTANT:

- To ensure this product is installed properly, you must read and follow these guidelines.
- The owner/user of this product must keep this information for future reference.
- This product must be installed by a professional licensed contractor and must be on-site prior to rough-in. This allows the installer to visualize the installation and verify the 8" [203mm] on-center inlet supply spread. The inlet supply spread on this product is **NOT** adjustable.

- Check the deck and tub measurements to assure the SPOUT projects far enough into the tub.
- Run 3/4" SUPPLY LINES for **maximum** flow and install accessible **hot** and **cold** service stop valves to facilitate servicing.
- Be sure your installation conforms to federal, state, and local codes.
 - Anti-scald protection is the responsibility of the installer and according to applicable codes.
 - A water temperature limiting device is the responsibility of the installer and must be in accordance with ASSE 1070.
 - In the State of Massachusetts, all installation must comply with the rules and regulations set forth within 248 CMR.
- Inspect this product to ensure you have all the parts required for proper installation. Product is **sold partially** assembled but shown fully disassembled for illustrative and service purposes only.
- Use only a strap wrench or protected/smooth-jaw wrench on any finished surface.
- The use of certain plumber's putty may stain stone or tile surfaces.
- If further assistance is required, please contact Product Support at 1-800-927-2120 Monday through Friday, 8am - 6pm EST.
- Refer to the separate Service Parts Documents for available replacement parts.

TECHNICAL DETAILS:

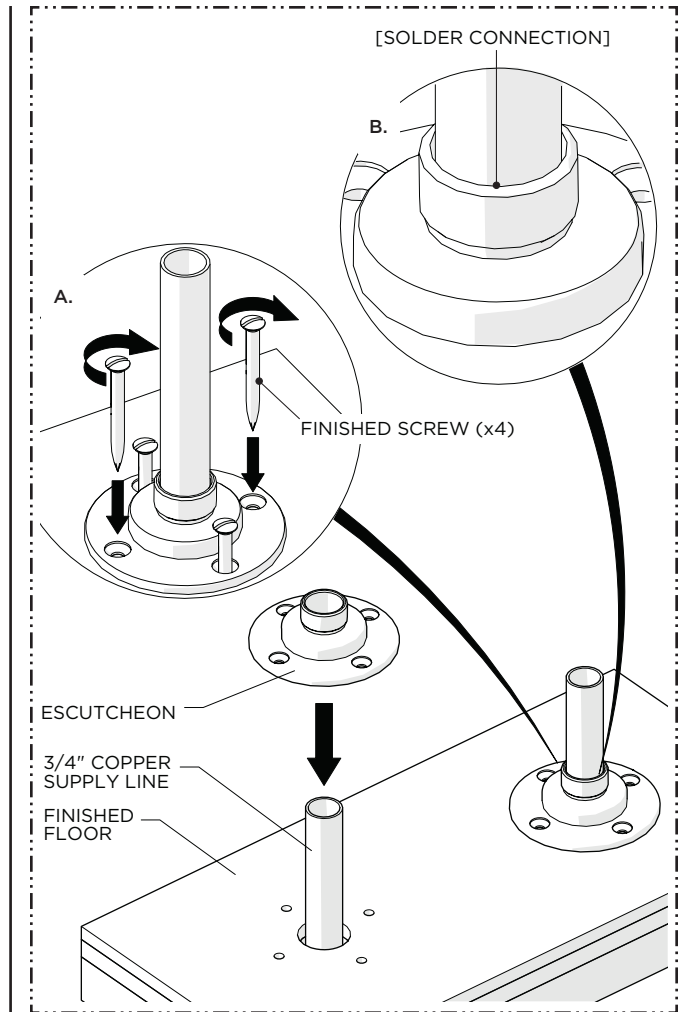
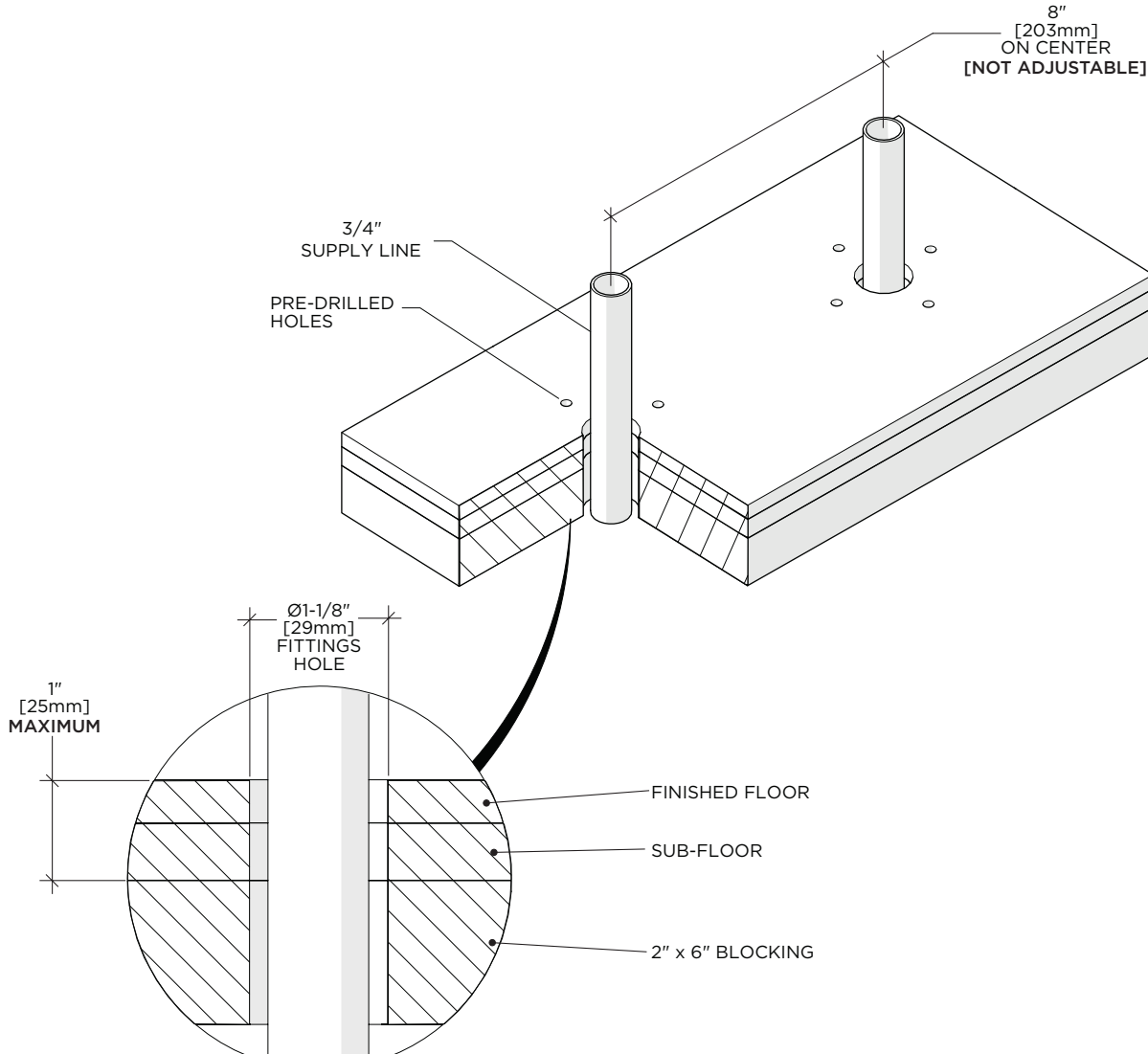
| DETAIL | SPECIFICATION |
|-------------------------------|--------------------------------|
| ADJUSTABLE VERSUS FIXED SPRAY | FIXED [HANDSHOWER - ONLY] |
| HANDLE TURN ANGLE | QUARTER TURN |
| HANDSHOWER HOSE LENGTH | 60" [1.5m] |
| HANDSHOWER PIVOT | YES |
| INLET CONNECTION | 3/4" COPPER SWEAT |
| INLET SUPPLY SPREAD | 8" [203mm] [NOT ADJUSTABLE] |
| INTEGRATED DIVERTER | YES |
| SPOUT REACH | 12-7/8" [327mm] |
| WATER PRESSURE RANGE | 20psi [1.5 bar] MINIMUM |
| | 85psi [6.0 bar] MAXIMUM |
| WATER PRESSURE RECOMMENDED | 45psi [3.0 bar] |

INSTALLATION GUIDELINES

FLOOR MOUNTED EXPOSED TUB FILLER

ROUGH-IN:

- Run well supported 3/4" **hot** and **cold** copper SUPPLY LINES for **maximum** water flow. The 3/4" SUPPLY LINES must be securely anchored/strapped below the sub-floor for proper support.
- Wood blocking should be no further than 1" from the finished floor for the MOUNTING SCREWS to create adequate support for the TUB FILLER.
- The inlet supply spread is 8" [203mm] on-center and is **NOT** adjustable.

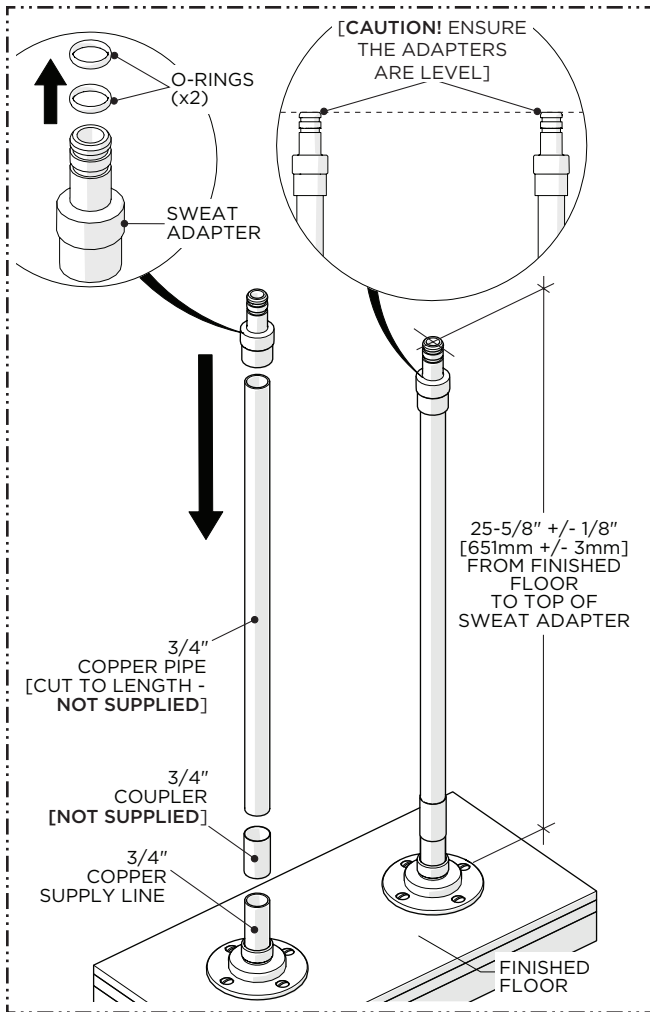


LEG INSTALLATION:

1. Slide the ESCUTCHEONS over the SUPPLY LINES in the desired orientation then
 - a. Secure each ESCUTCHEON using the FINISHED SCREWS provided and
 - b. Solder the SUPPLY LINES to the inner diameter of each ESCUTCHEON to ensure adequate stability.

INSTALLATION GUIDELINES

FLOOR MOUNTED EXPOSED TUB FILLER

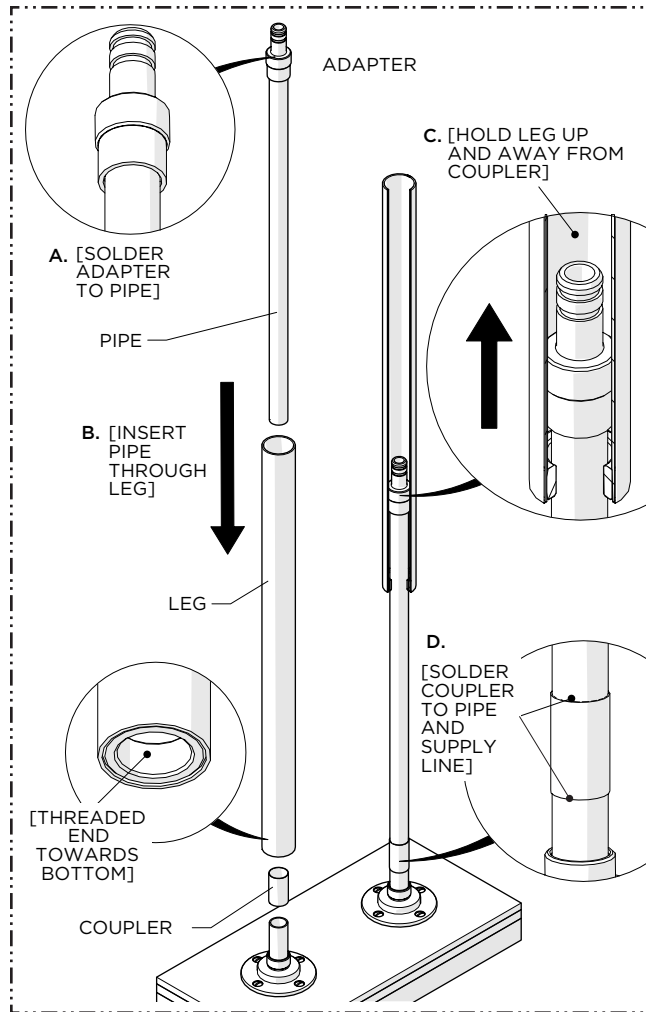


CAUTION! DRY-FIT ONLY: DO NOT SOLDER ANY FITTINGS AT THIS STAGE.

2. Extend the SUPPLY LINES using 3/4" COPPER PIPE and COUPLERS (**not supplied**) then remove the O-RINGS from the SWEAT ADAPTERS and dry-fit the ADAPTERS onto the SUPPLY LINES.

Ensure the ADAPTERS are level and at equal heights. The top of the ADAPTERS must be 25-5/8" [651mm] +/- 1/8" [3mm] above the finished floor.

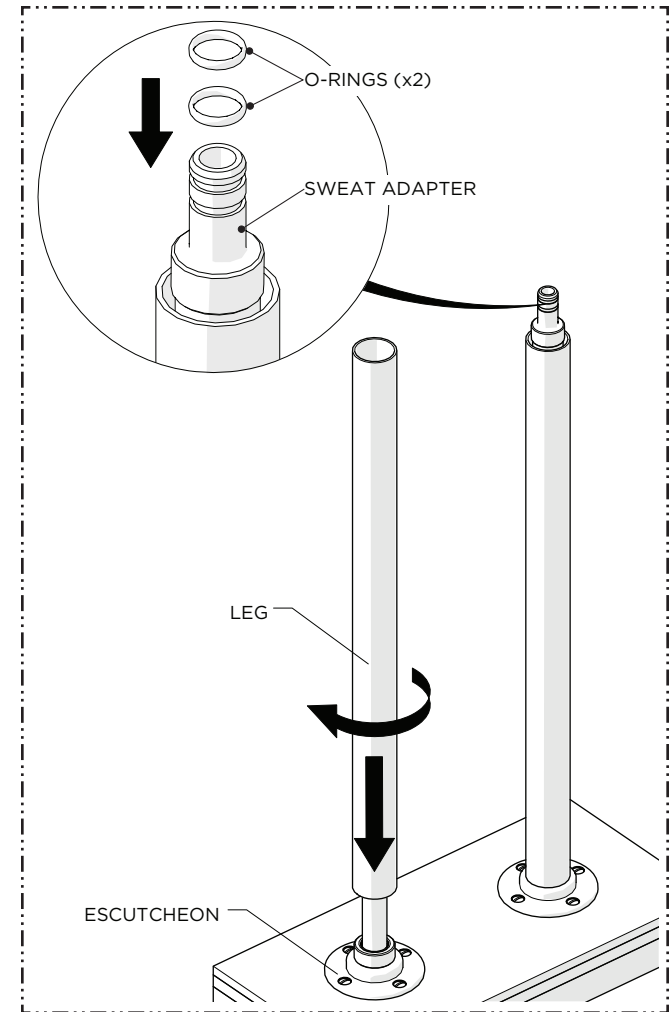
IMPORTANT: Ensure the PIPES are free of any burrs.



3. To install the ADAPTERS:

- A. Solder the inner diameter of an ADAPTER onto one end of each COPPER PIPE and let cool.
- B. Insert the PIPE into the top of the LEG until it passes through.
- C. With assistance, hold the LEG up and away from the COUPLER to prevent damaging the finish while soldering.
- D. Connect each COPPER PIPE to the SUPPLY LINE using a COUPLER.

CAUTION: Ensure the O-RINGS have been removed prior to soldering the ADAPTERS to prevent damaging them.

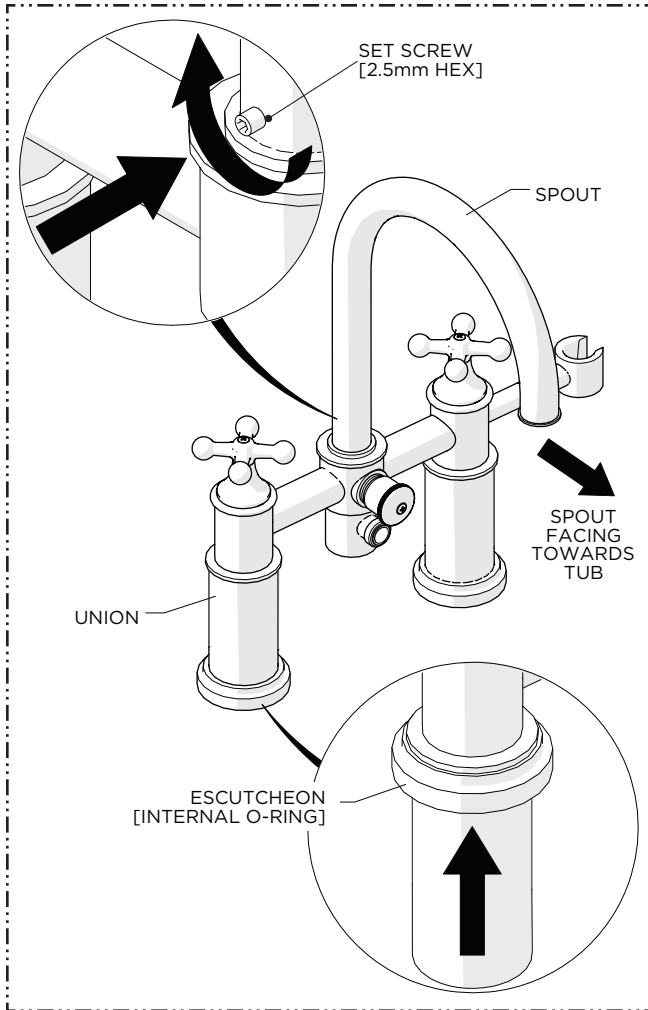


4. Thread and securely tighten the LEGS onto the ESCUTCHEONS then re-install the O-RINGS back onto the ADAPTERS.

CAUTION: Ensure the ADAPTERS have remained level and at equal heights. The top of the ADAPTERS must be 25- 5/8" [651mm] +/- 1/8" [3mm] above the finished floor.

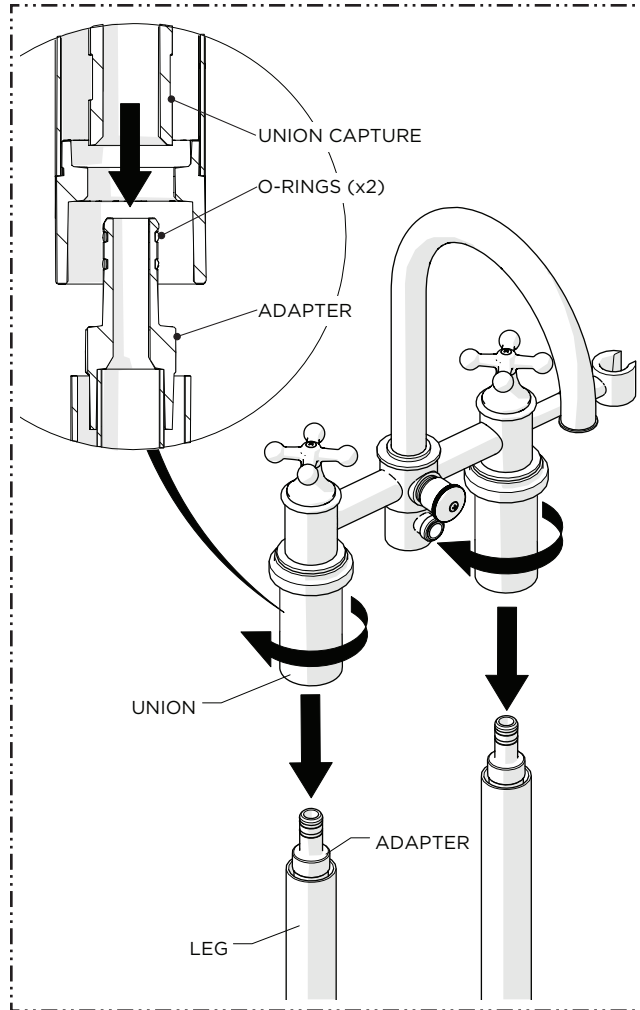
INSTALLATION GUIDELINES

FLOOR MOUNTED EXPOSED TUB FILLER

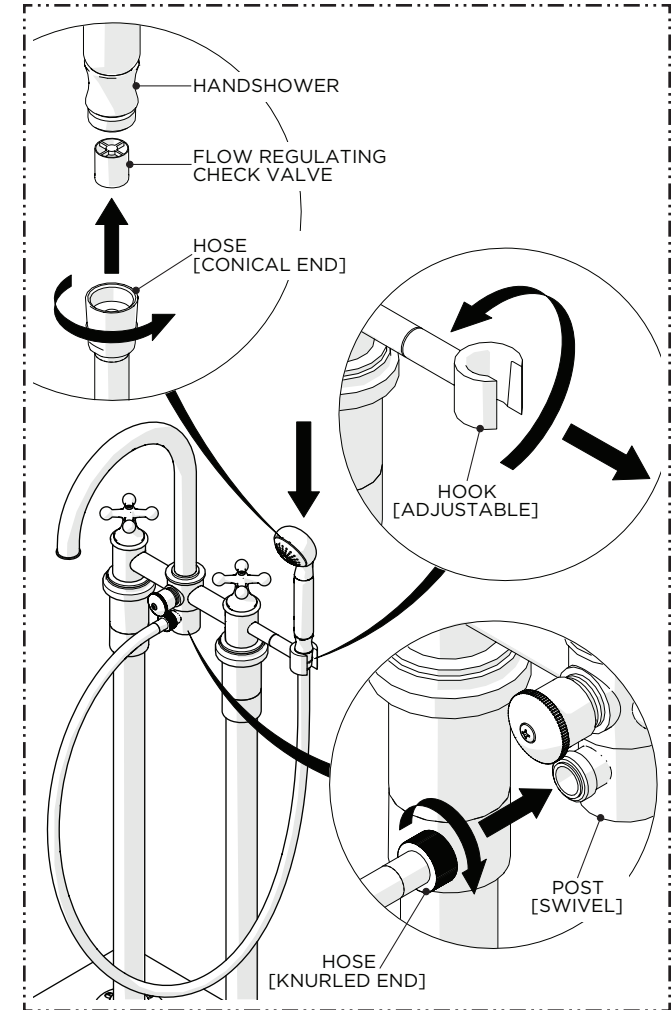


5. Align the SPOUT properly and securely tighten the SET SCREW at the base of the SPOUT then slide the ESCUTCHEONS up the UNIONS.

NOTE: The SPOUT is **NOT** intended to swivel. Ensure the SET SCREW is securely tightened.



6. Align the UNIONS over the LEGS and slide the UNION CAPTURES onto the ADAPTERS then thread and securely tighten the UNIONS onto ADAPTERS.



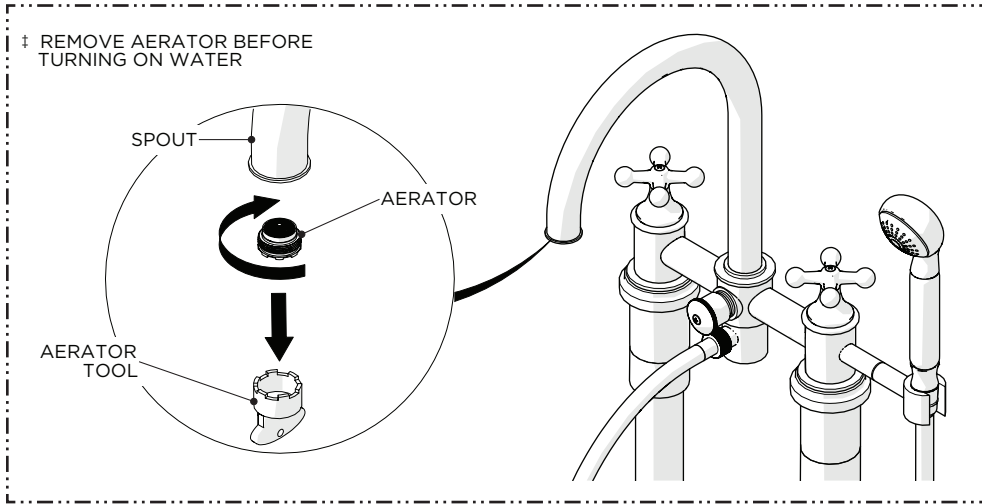
7. Thread and securely tighten the conical end of the HOSE to the HANDSHOWER and the knurled end to the POST at the base of the SPOUT then place the HANDSHOWER into the HOOK.

NOTE: The angle of the HOOK can be adjusted in 18° increments.

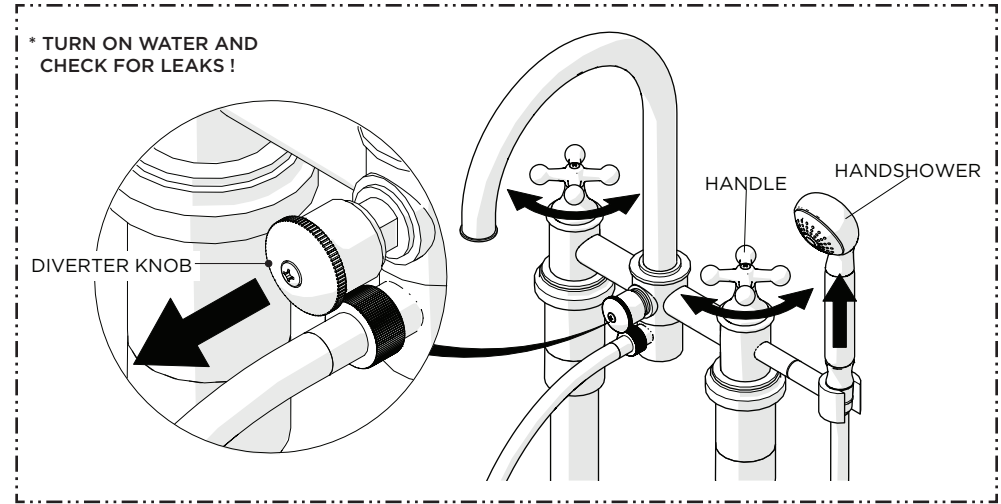
NOTE: A FLOW REGULATING CHECK VALVE is located inside the inlet of HANDSHOWER.

INSTALLATION GUIDELINES

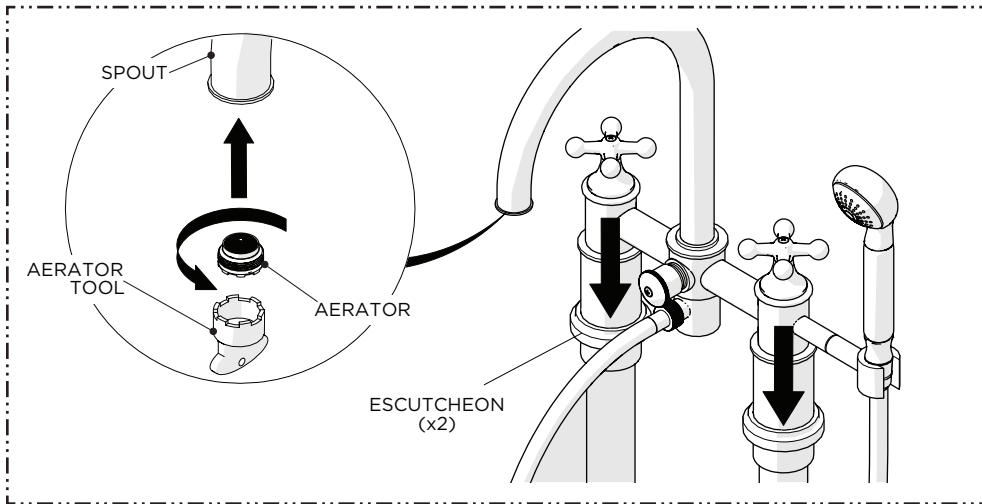
FLOOR MOUNTED EXPOSED TUB FILLER



8. Remove the AERATOR using the AERATOR TOOL provided BEFORE turning on the water and diverting water to the HANDSHOWER.



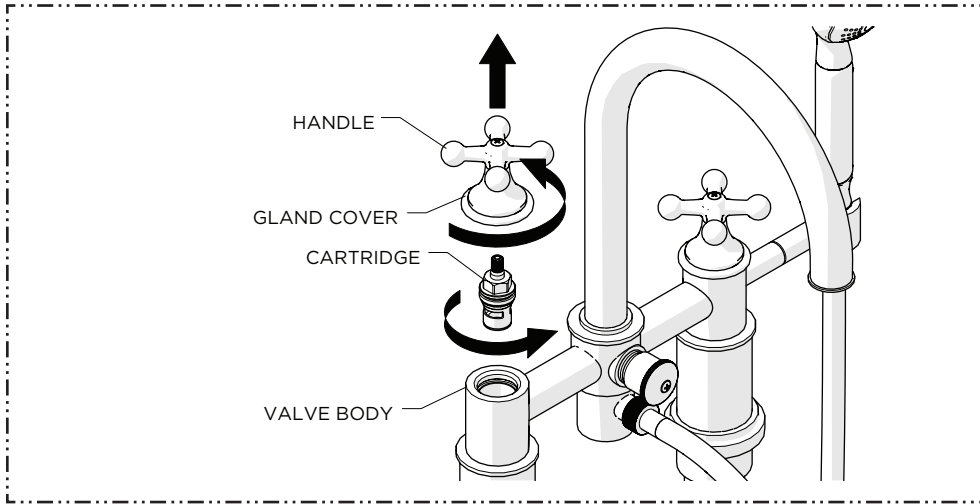
9. Turn on the water to flush out the SUPPLY LINES, operate the HANDLES and DIVERTER KNOB to ensure they function properly, and carefully inspect all connections for **leaks** then turn off the water.



10. Re-install the AERATOR then slide the ESCUTCHEON down the UNIONS.

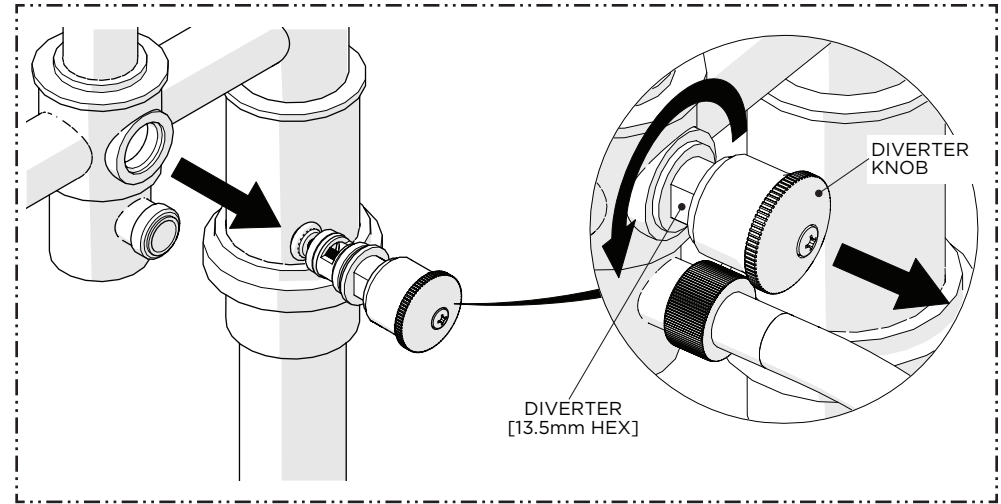
SERVICING GUIDELINES

FLOOR MOUNTED EXPOSED TUB FILLER



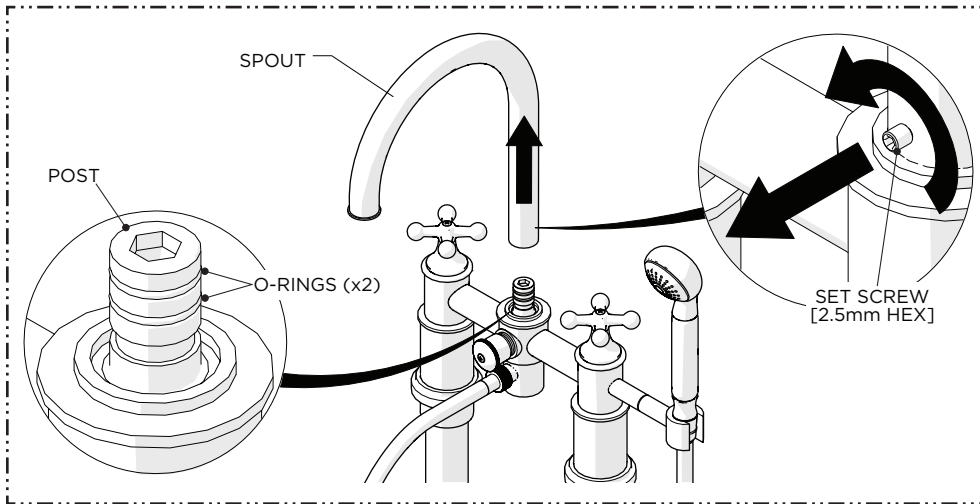
SERVICING THE CARTRIDGE:

1. Unthread the GLAND COVER and pull the HANDLE off to expose the CARTRIDGE then unthread and remove the CARTRIDGE using a 21/32" [17mm] shower valve socket wrench.



SERVICING THE DIVERTER:

1. Pull the DIVERTER KNOB to expose the DIVERTER NUT then unthread and remove the DIVERTER using a 13.5mm wrench.



SERVICING THE SPOUT:

1. Loosen but do NOT remove the SET SCREW at the base of the SPOUT then remove the SPOUT to expose the POST and external O-RINGS.