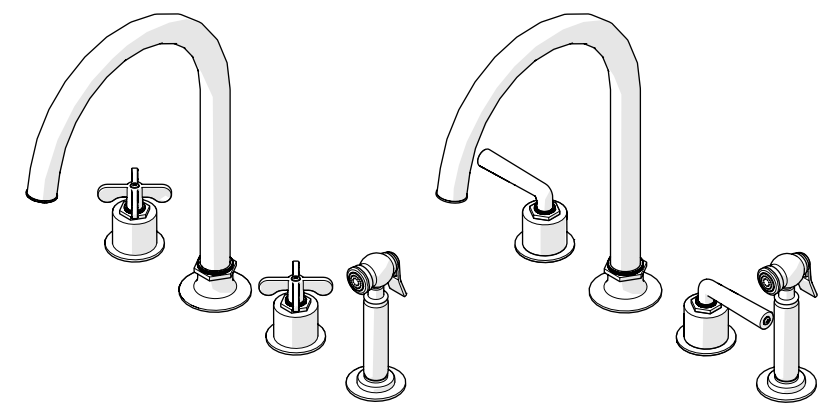


# INSTALLATION GUIDELINES

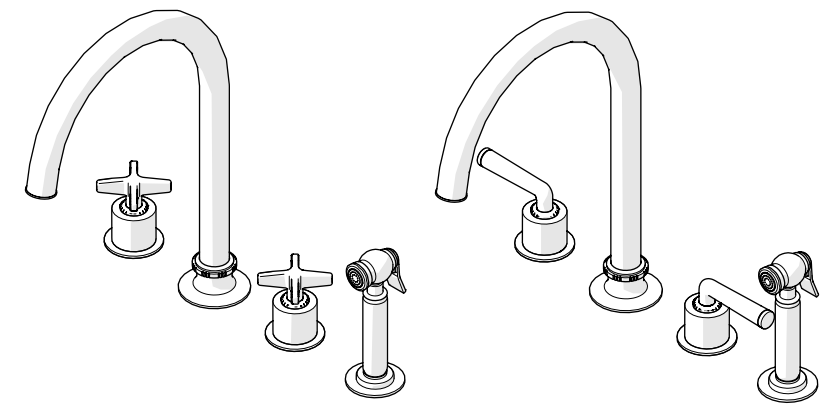
## GOOSENECK KITCHEN FAUCET

### HENRY GOOSENECK KITCHEN FAUCET WITH HANDLES AND SPRAY



| STYLES |        |
|--------|--------|
| HKM301 | HKM311 |

### HENRY CHRONOS GOOSENECK KITCHEN FAUCET WITH HANDLES AND SPRAY



| STYLES         |                |        |
|----------------|----------------|--------|
| CKM301 [SHOWN] | CKM311 [SHOWN] | CKM314 |

#### IMPORTANT:

- To ensure this product is installed properly, you must read and follow these guidelines.
- The owner/user of this product must keep this information for future reference.
- This product must be installed by a professional licensed contractor.
- Be sure your installation conforms to all federal, state, and local codes. In the State of Massachusetts, all installations must comply with the rules and regulations set forth within 248 CMR.
- Inspect this product to ensure you have all the parts required for proper installation.
- This Product is **sold partially** assembled but shown fully disassembled for illustrative and service purposes only.
- **CAUTION:**
  - Flushing the SUPPLY VALVES (**sold separately**) prior to installing the KITCHEN FAUCET is recommended. Flushing can prevent damage to the CARTRIDGES and other internal components.
- Use only a strap wrench or protected/smooth-jaw wrench on any finished surface.
- The use of certain plumber's putty may stain stone or tile surfaces.
- If further assistance is required, please contact Product Support at 1-800-927-2120 Monday through Friday, 8am – 6pm EST.
- Refer to the separate Service Parts Documents for available replacement parts.

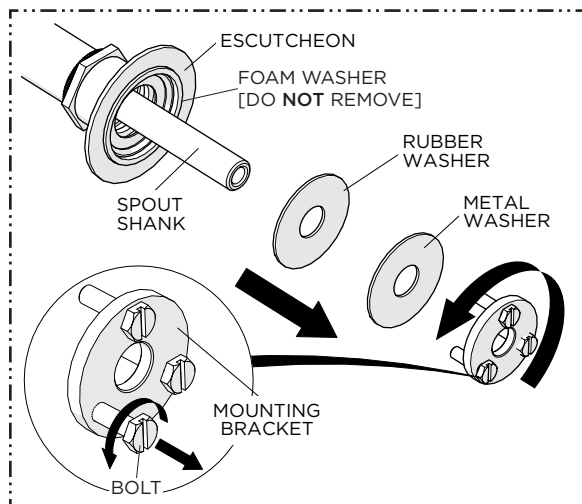
#### TECHNICAL DETAILS:

| DETAIL                     | SPECIFICATION  |
|----------------------------|--|
| DECK THICKNESS RANGE       | 3/8" [10mm] <b>MINIMUM</b><br>1-1/2" [38mm] <b>MAXIMUM</b> |
| FITTINGS HOLE DIAMETER     | Ø 1-3/8" [35mm]  |
| HANDLE SPREAD              | 8" [203mm] <b>MINIMUM</b><br>12" [305mm] <b>MAXIMUM</b>    |
| HANDLE TURN ANGLE          | QUARTER TURN   |
| INLET CONNECTION           | 1/2" MALE WITH SUPPLY NUT                                  |
| SPOUT REACH                | 9-3/4" [246mm]   |
| SPOUT SWIVEL               | YES  |
| SPRAY HOSE LENGTH          | 59" [1.5m]   |
| SPRAY INCLUDED IN UNIT     | YES  |
| WATER PRESSURE             | 85psi [6.0 bar] <b>MAXIMUM</b>                             |
|                            | 20psi [1.5 bar] <b>MINIMUM</b>                             |
| WATER PRESSURE RECOMMENDED | 45psi [3.0 bar]  |

# INSTALLATION GUIDELINES

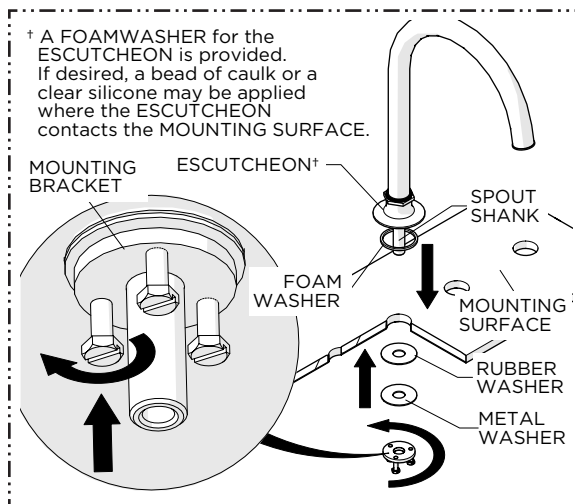
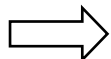
## GOOSENECK KITCHEN FAUCET

WATERWORKS



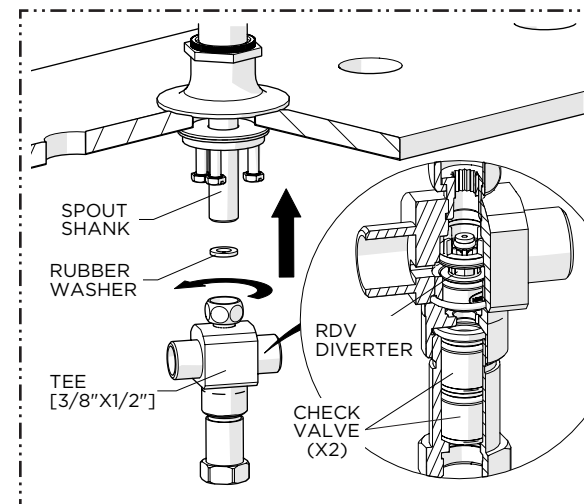
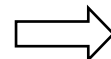
1. Unthread and remove the MOUNTING BRACKET, and WASHERS from the SPOUT SHANK then loosen the BOLTS on the BRACKET.

NOTE: Do **NOT** remove the FOAM WASHER beneath the ESCUTCHEON.



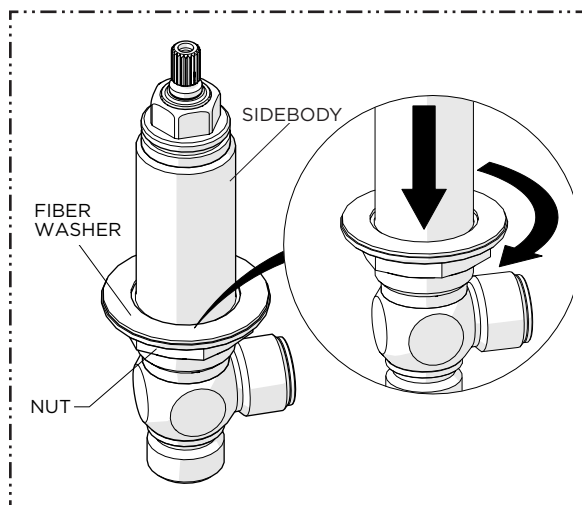
2. Insert the SPOUT SHANK through the hole on the MOUNTING SURFACE then re-install the WASHERS and MOUNTING BRACKET.

Hand-tighten the BRACKET then evenly thread and tighten the BOLTS until the SPOUT is secure.



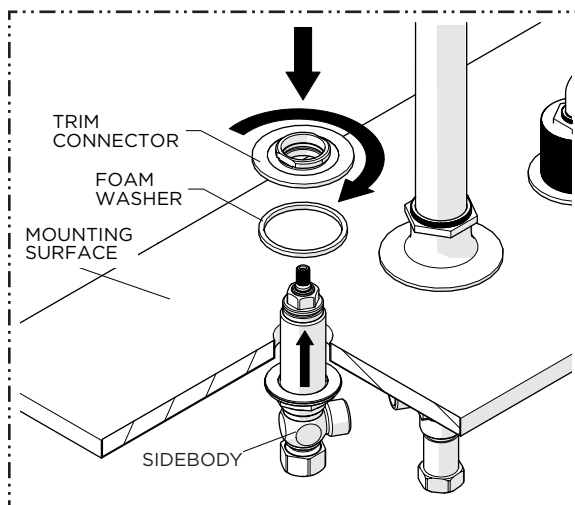
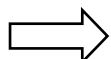
3. Using the RUBBER WASHER provided, thread and securely tighten the TEE onto the SPOUT SHANK.

NOTE: A DIVERTER and two CHECK VALVES are located inside the TEE.

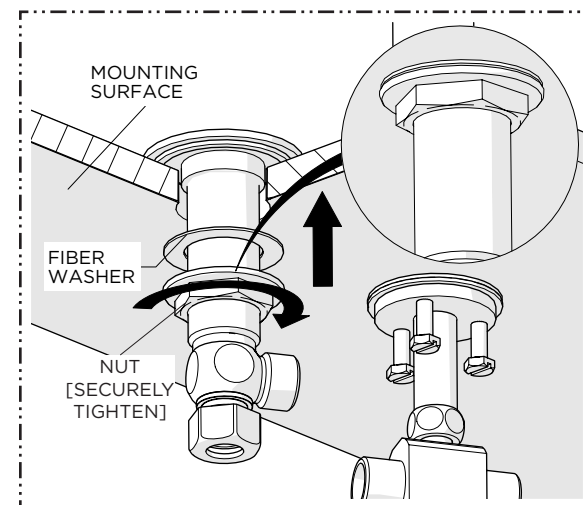
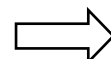


4. Fully thread the NUT down the SIDEBODY.

NOTE: Do **NOT** remove the LOWER DECK WASHER.



5. Insert the SIDEBODY into the hole on the MOUNTING SURFACE from below then, using the FOAM WASHER provided, thread the TRIM CONNECTOR back onto the SIDEBODY until snug.



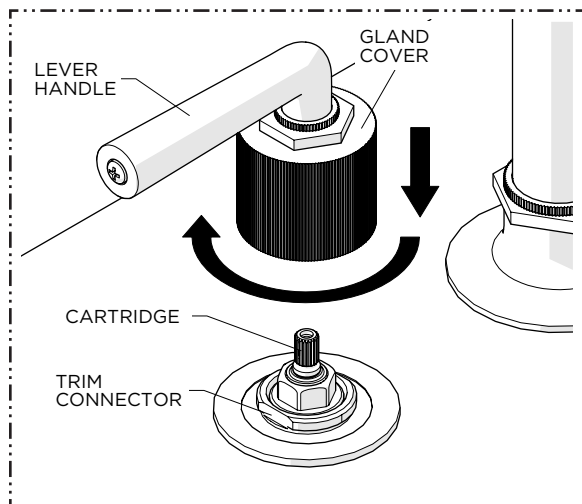
6. Ensure the SIDEBODY is positioned so the SUPPLY HOSE can be easily connected to the TEE then thread and securely tighten the NUT against the underside of the MOUNTING SURFACE.

NOTE: Repeat steps 4 - 6 to install the SECOND SIDEBODY.

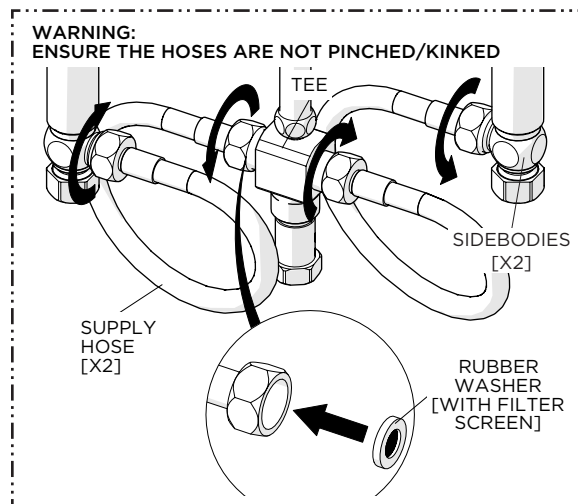
# INSTALLATION GUIDELINES

## GOOSENECK KITCHEN FAUCET

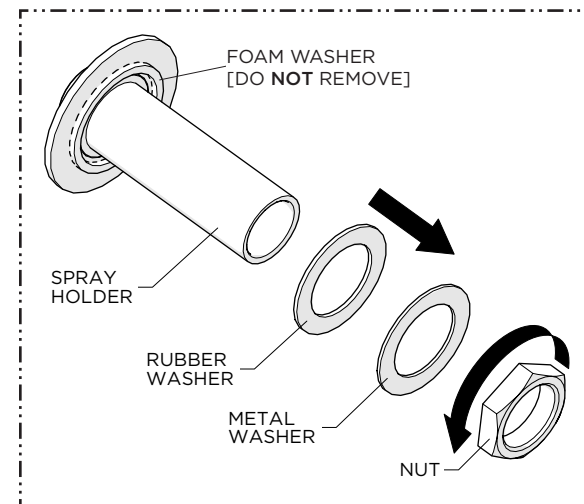
# WATERWORKS



7. With proper HANDLE orientation, place the HANDLE onto the CARTRIDGE and then thread the GLAND COVER to TRIM CONNECTOR until snug.

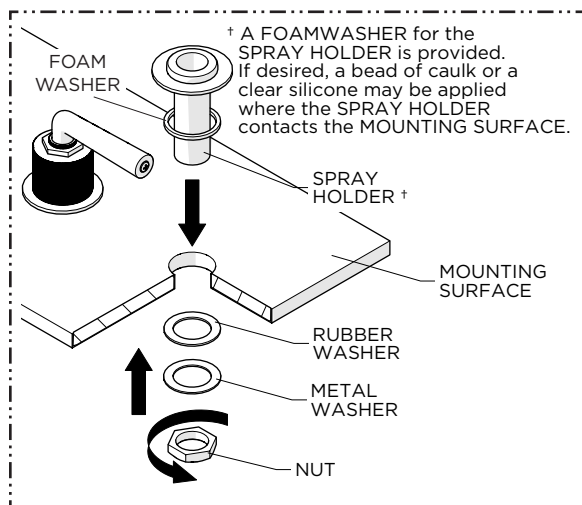


8. Connect the SIDEBODIES to the TEE using the SUPPLY HOSES and WASHERS provided then Securely tighten the HOSES and ensure they are not pinched/kinked.

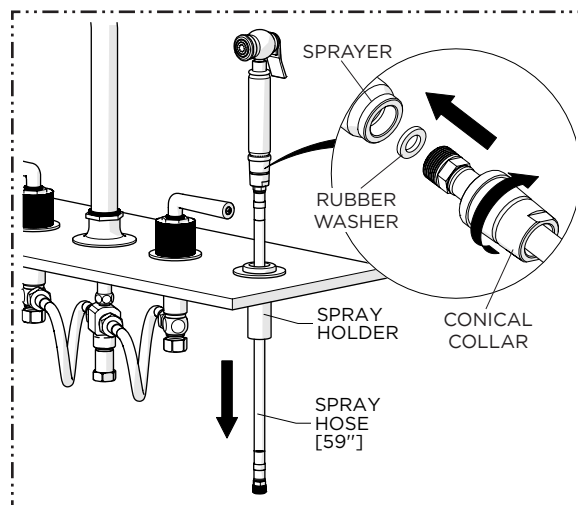


9. Remove the NUT, METAL WASHER, and RUBBER WASHER from the SPRAY HOLDER.

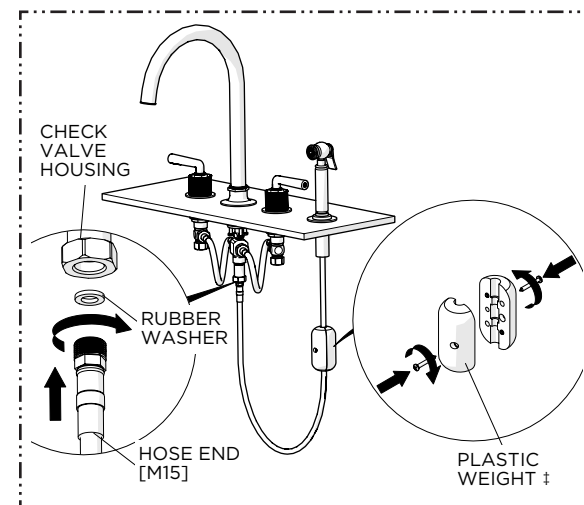
**NOTE:** Do **NOT** remove the FOAM WASHER beneath the SPRAY HOLDER.



10. Insert the SPRAY HOLDER through the hole on the MOUNTING SURFACE then re-install the WASHERS and securely tighten the NUT.



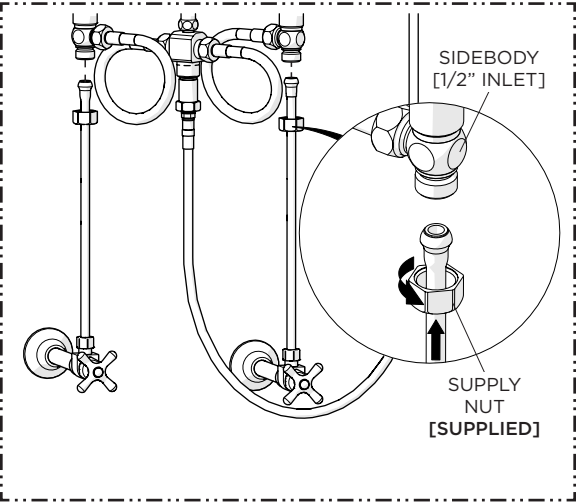
11. Remove the CONICAL COLLAR from the SPRAYER and slide the CONICAL COLLAR onto the HOSE. Using the RUBBER WASHER provided, thread one end of the SPRAY HOSE onto the SPRAYER, then slide the CONICAL COLLAR up and thread it securely to the SPRAYER.



12. Using the RUBBER WASHER provided, thread the SPRAY HOSE onto the CHECK VALVE HOUSING then attach the WEIGHT to a straight section of the HOSE that is opposite of the HOUSING/TEE and verify the SPRAYER sits properly in the HOLDER.

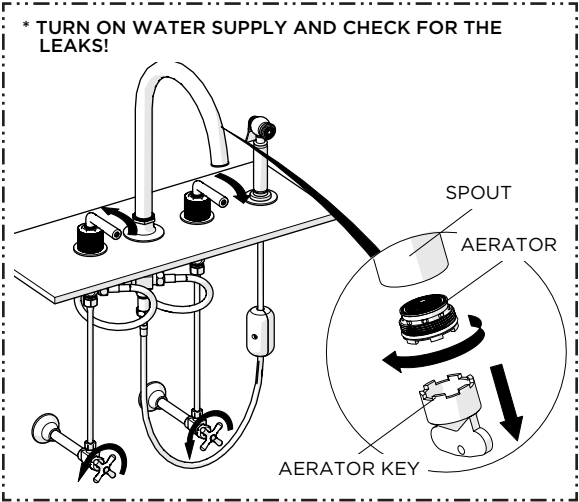
# INSTALLATION GUIDELINES

## GOOSENECK KITCHEN FAUCET

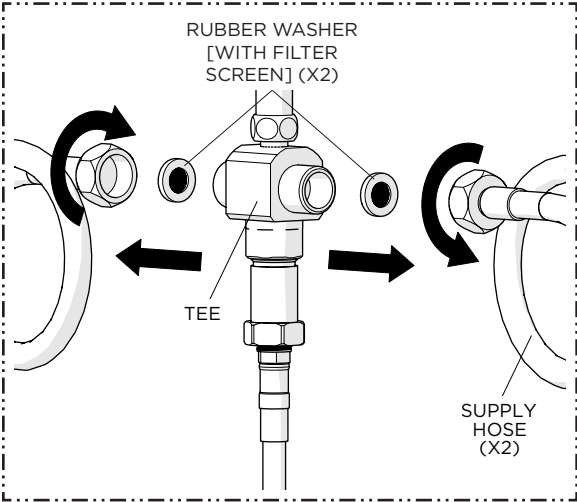


13. Make final SUPPLY VALVE (sold separately) connections.

**NOTE:** Make sure the SPRAY HOSE and WEIGHT are **NOT** obstructed and can move freely.

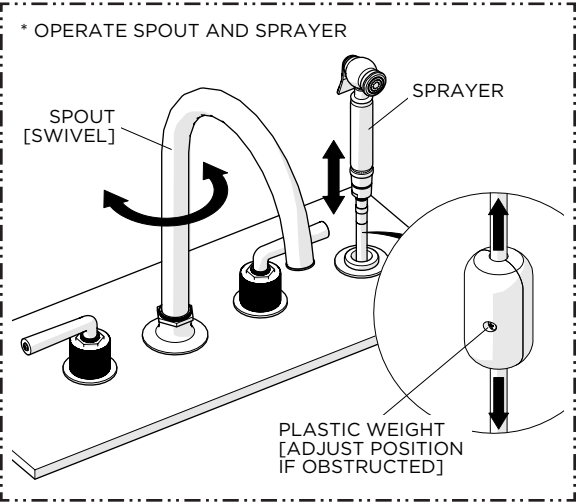


14. Unthread and remove the AERATOR then turn on the water supply and open the FAUCET to flush out any debris in the SUPPLY LINES prior to operating the SPRAYER. Inspect all connections for leaks.

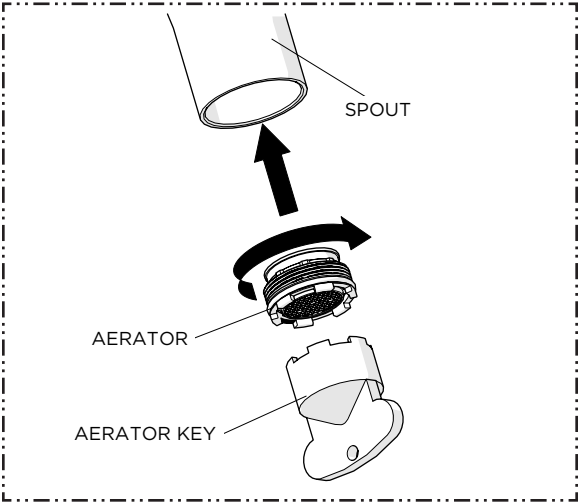


15. Turn off the FAUCET and unthread both the SUPPLY HOSES from the TEE to remove and clean the WASHER WITH FILTER SCREENS then reinstall the WASHERS and HOSES.

**CAUTION:** If FILTER SCREENS are removed or left out, debris may damage the DIVERTER.



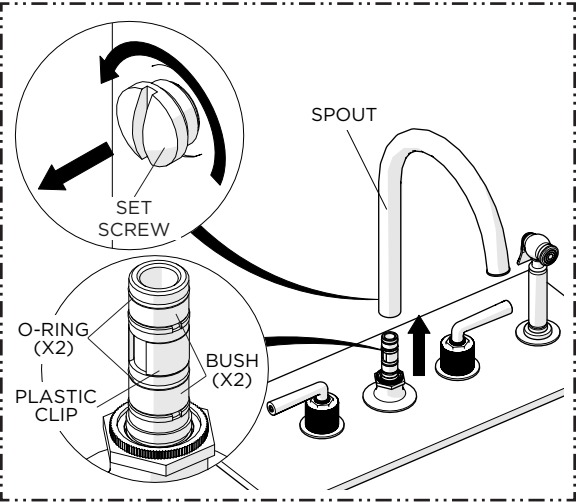
16. Pull out the SPRAYER and rotate the SPOUT to ensure they function properly and the WEIGHT can move freely beneath the cabinet.



17. Re-install the AERATOR.

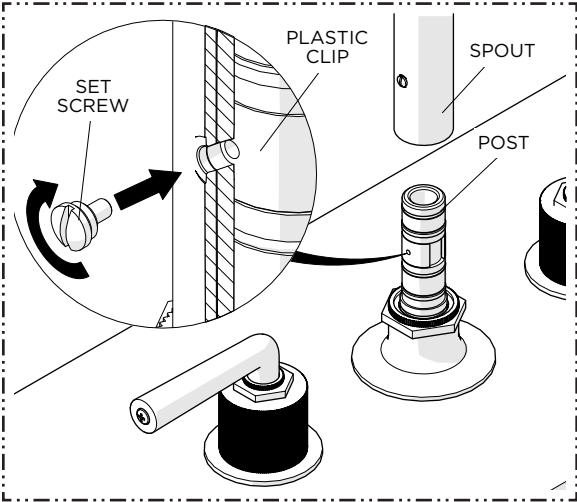
SERVICE GUIDELINES  
GOOSENECK KITCHEN FAUCET

WATERWORKS

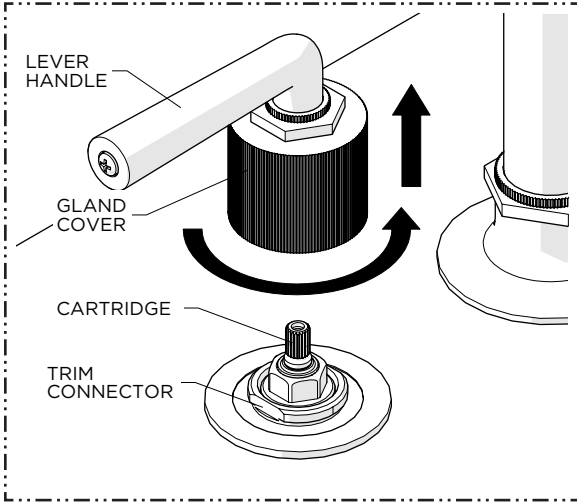


SERVICING THE SPOUT:

1. Unthread the SET SCREW located at the base of the SPOUT then pull the SPOUT up to expose the POST.

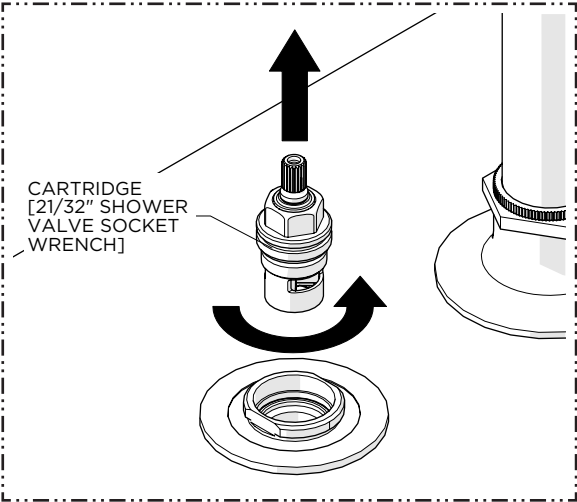


2. When replacing the SPOUT, the SET SCREW must properly align with the hole on the PLASTIC CLIP to securely hold the SPOUT in position.

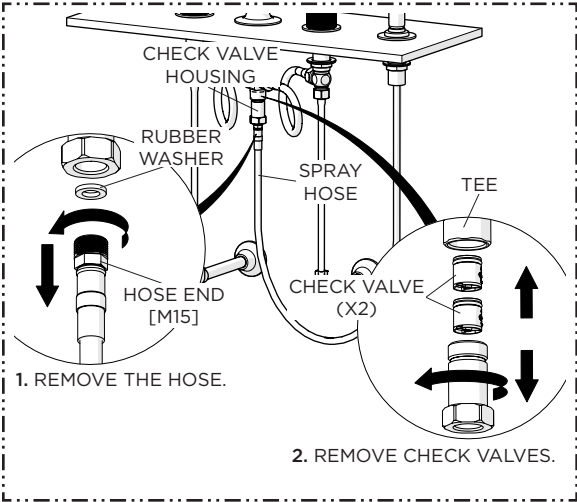


SERVICING THE CARTRIDGE:

1. Unthread the GLAND COVER from the TRIM CONNECTOR to expose the CARTRIDGE.

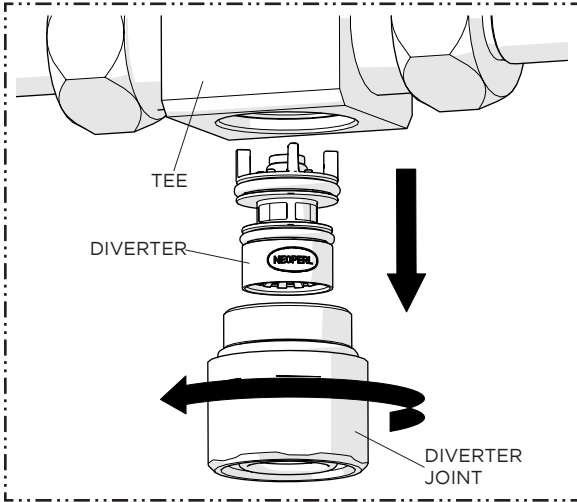


2. Unthread and remove the CARTRIDGE using a 21/32" [17mm] shower valve socket wrench.



SERVICING CHECK VALVE:

1. Remove the SPRAY HOSE from the CHECK VALVE HOUSING, then unthread the CHECK VALVE HOUSING from the TEE to access the CHECK VALVES.



SERVICING DIVERTER:

1. Unthread the DIVERTER JOINT to gain access to the DIVERTER.