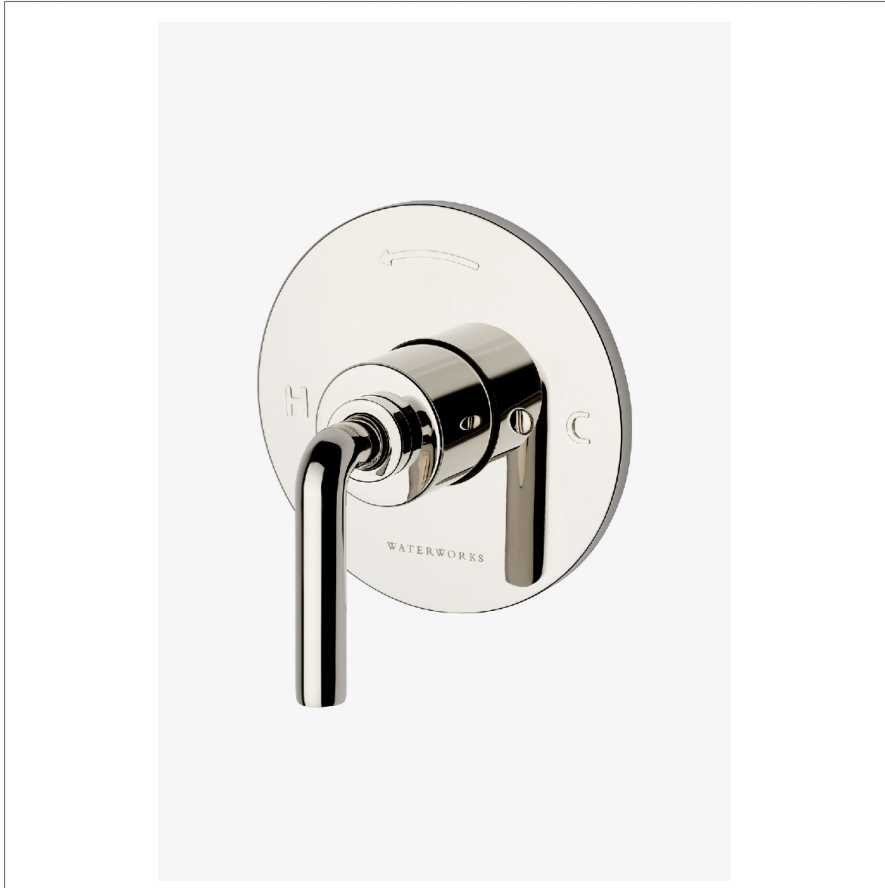


FLYTE

FLPB10

Flyte Pressure Balance Control Valve Trim with Lever Handle



SHOWN IN FLYTE PRESSURE BALANCE CONTROL VALVE TRIM WITH LEVER HANDLE | FLPB10

TECHNICAL DETAILS

ADA Compliance: Yes
 Depth/Width: 3 1/16"
 Fittings Hole Diameter: 3 1/2"
 Height: 5 7/8"
 Integrated Diverter: N
 Integrated Spray: N
 Length: 5 1/2"
 Number Of Handles: One
 Pivot: N
 Primary Material: Brass
 Spout Swivel: N
 Spray Included In Unit: N
 Suggested Application: Bath

INSPIRATION

Pure Modernism. Like minimalist works of art, the elegant proportions of these light, fluid elements bring sculptural reference to a room.

CODES & STANDARDS

ASME A112.18.1/CSA B125.1, State of MA

PRODUCT FEATURES

Lever Handle

Adjust the single handle control to switch water on and adjust temperature

Features anti-scald protection through an integrated high limit safety stop

Stocked in Chrome, Nickel, Brass and Matte Black

Requires rough valve, sold separately: GUPB81 (USA) or GU81PB (UK/International)

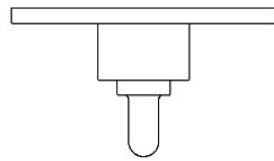
CERTIFICATIONS



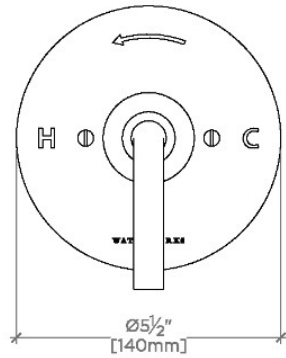
PRODUCT (NOTES)

Requires valve rough GUPB81, item 26-19129-09166 sold separately.

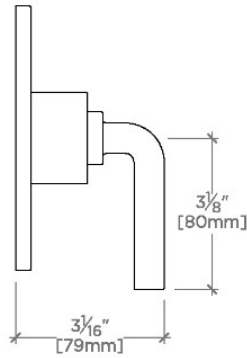
Flyte Pressure Balance Control Valve Trim with Lever Handle



TOP VIEW SCALE: 3"=1'-0"



FRONT VIEW SCALE: 3"=1'-0"



SIDE VIEW SCALE: 3"=1'-0"