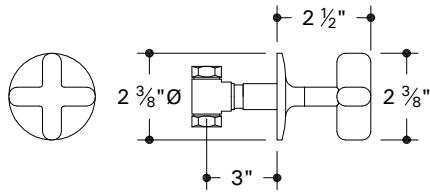


PTSV47 (trim) & GUSV16R (rough)



PTSV48 (trim) & GUSV16R/17R (rough)

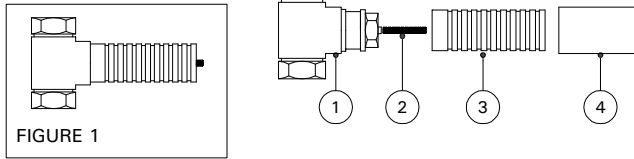
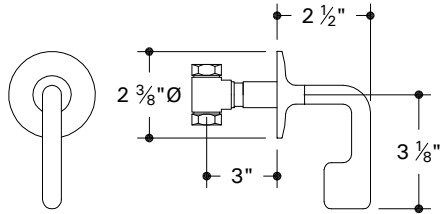


FIGURE 1

IMPORTANT

- To ensure this product is installed properly, you must read and follow these guidelines.
- The owner/user of the valve must keep this information for future reference.
- Valve body rough-in depth is 3" from the centerline of the inlets to the face of the finished wall. The valve must be installed according to the flow direction arrow marked on the side of the wall valve body.
- Be sure your installation conforms to local codes.
- Wall valves control on/off/volume and must be installed for each fitting that will have water flowing to it. If using a wall valve with our thermostatic valve, refer to the Installation Guidelines for the Thermostatic Valve which contains related installation information.
- This product must be installed by a professional contractor.

- Refer to the specification and assembly drawings attached. Shower trim and valves are sold partially assembled but shown fully disassembled for illustrative and service purposes only.

- This valve should be on-site prior to rough in and allows the installer to visualize the installation.

- Inspect this product to assure you have all parts required for proper installation.

- Use only a strap wrench or protected/smooth-jaw wrench on any finished surface.

ROUGH IN:

REQUIRED: Ideal valve body rough-in depth is 3" from the centerline of the inlets to the face of the finished wall.

1. Remove the tile shield (4) and unthread the threaded sleeve (3) from the valve body assembly (1,2).
2. If soldering any connections, remove the cartridge (2) to prevent damage to seals.
3. For each fitting that will have water flowing to it, install a wall valve according to the flow direction arrow marked on the side of the wall valve body.
4. Run 3/4" copper supply lines to the proper height of the valve inlets and be sure to secure all piping and fittings. Install the valve at a height and spread (if applicable) that is comfortable to the user.
5. Reinstall the cartridge and threaded sleeve making sure the tile shield is attached.
6. Turn on the supplies and check for leaks.

ATTACH THE TRIM:

7. Pull the tile shield (4) off the threaded sleeve (3).
8. Thread the handle trim connector onto the handle.
9. Thread the handle trim connector and handle onto the threaded trim sleeve (3).

These guidelines have been prepared for the professional contractor to aid in the installation of:
.25 WALL VALVE TRIM WITH CROSS HANDLE (PTSV47) & LEVER HANDLE (PTSV48)
 All dimensions are based on original specification and are subject to change and variation. Please consult your Design Associate for current specifications.

W A T E R W O R K S

10. Based on final rough-in depth, determine how much of the splined cartridge stem (2) and threaded sleeve (3) need to be cut off. See figure 1.

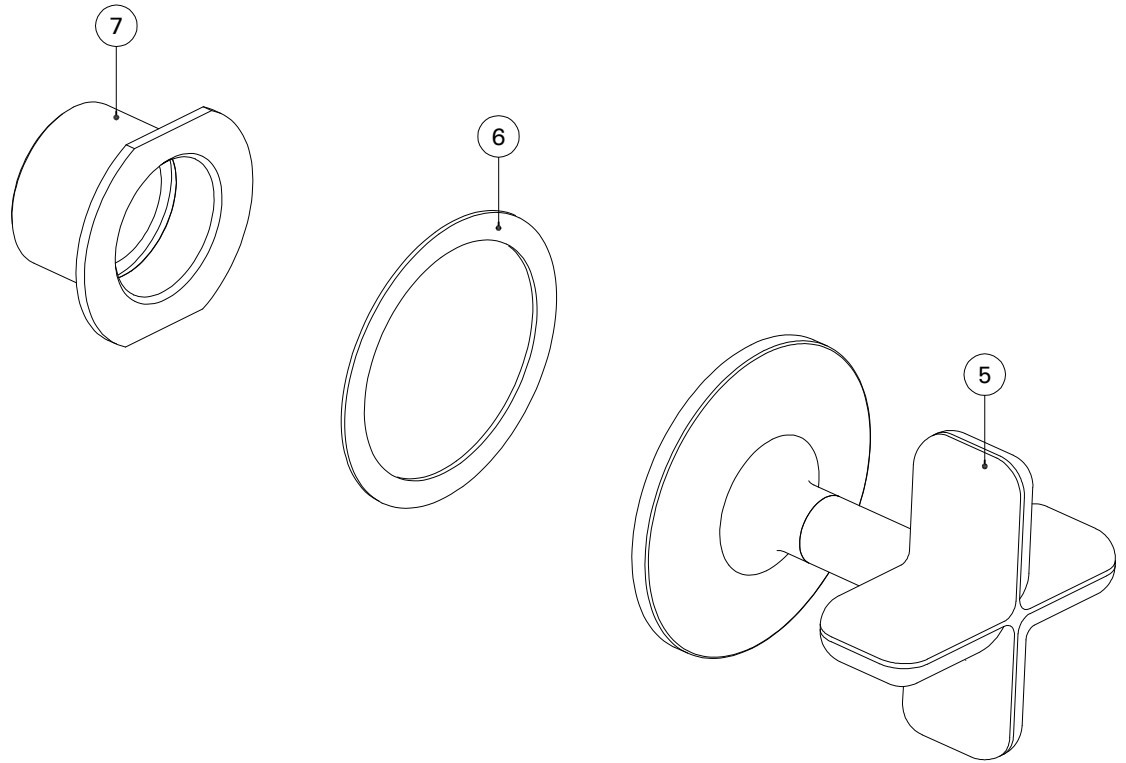
11. Thread on the handle/escutcheon assembly until it contacts the surface of the finished wall. Hand tight is adequate. If there are gaps between the escutcheon and the wall, adjust the length of the stem and/or sleeve.

12. Operate the wall valve to verify proper function.

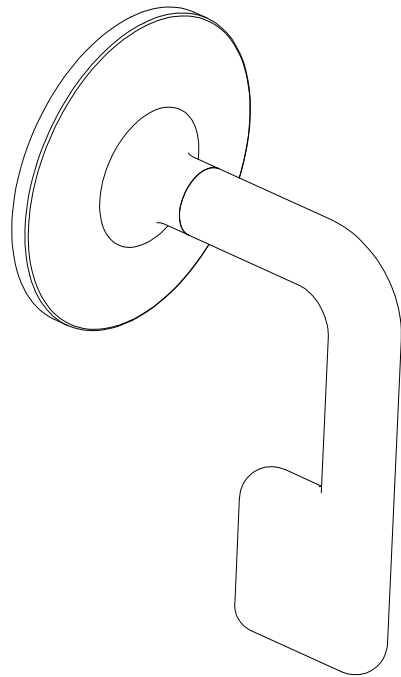
If further assistance is required, please contact Product Support at 1-800-927-2120 (8am-7pm EST)

These guidelines have been prepared for the professional contractor to aid in the installation of:
.25 WALL VALVE TRIM WITH CROSS HANDLE (PTSV47) & LEVER HANDLE (PTSV48)
All dimensions are based on original specification and are subject to change and variation. Please consult your Design Associate for current specifications.

W A T E R W O R K S



PTSV68



PARTS TABLE		
ITEM NO.	DESCRIPTION	QTY.
5	HANDLE	1
6	GASKET	1
7	HANDLE TRIM CONNECTOR	1

These guidelines have been prepared for the professional contractor to aid in the installation of:
.25 WALL VALVE TRIM WITH CROSS HANDLE (PTSV47) & LEVER HANDLE (PTSV48)
 All dimensions are based on original specification and are subject to change and variation. Please consult your Design Associate for current specifications.

W A T E R W O R K S