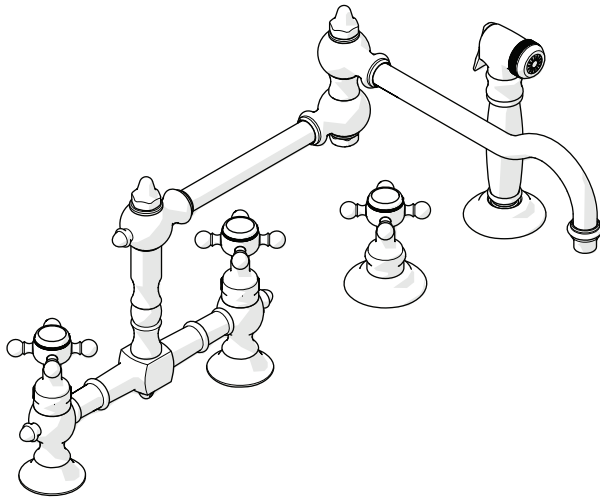
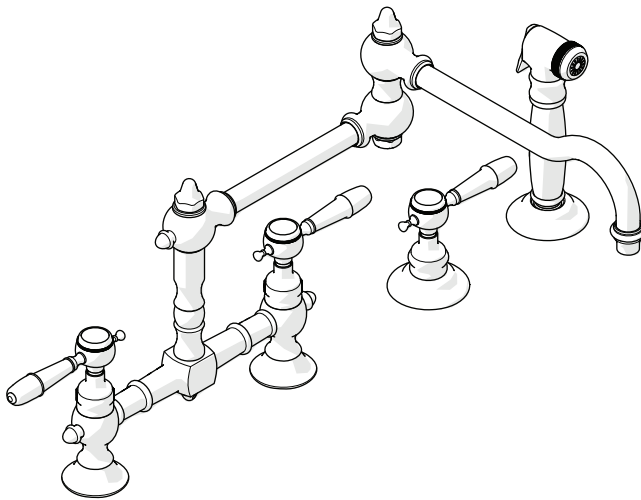


STYLE No. JUKM42
Cross Handles



STYLE No. JUKM43
Lever Handles



SPECIFICATIONS:

- Deck Thickness Maximum: 1-1/2" (38mm)
- Fittings Hole Diameter [Spout]: Ø1" (25mm)
- Fittings Hole Diameter [Valve, Spray]: 1-1/4" (32mm)
- Handle Spread [Spout, **NOT** adjustable]: 7-7/8" (200mm)
- Handle Turn Angle: Quarter Turn
- Inlet Connection Size & Type: 1/2" Male with Supply Nut
- Inlet Supply Spread [Spout, **NOT** adjustable]: 7-7/8" (200mm)
- Integrated Diverter: N
- Restricted Maximum Flow Rate: 2.2gpm (8.3liters/min)
- Spout Reach: 18-3/8" (467mm)
- Spout Swivel: Yes
- Spray Hose Length: 49" (1245mm)
- Water Pressure Minimum: 20 psi (1.4 Bar)
- Water Pressure Maximum: 80 psi (5.5 Bar)
- Water Pressure Recommended: 45 psi (3 Bar)

IMPORTANT:

- To ensure this product is installed properly, you must read and follow these guidelines.
- This product must be installed by a professional licensed contractor.
- The owner/user of this product must keep this information for future reference.
- Be sure your installation conforms to all federal, state, and local codes. In the State of Massachusetts, all installations must comply with the rules and regulations set forth within 248 CMR.
- Inspect the product to ensure you have all the parts required for proper installation.
- Use only a strap wrench or protected/smooth-jaw wrench on any finished surface.
- **DO NOT** use putty. Putty contains oil and can cause permanent discoloration on certain materials such as marble, granite and any porous surface.
- Refer to the specification and assembly drawings attached. Product is sold partially assembled but shown fully disassembled for illustrative and service purposes only.
- This product requires 4 holes on the mounting surface. The spout requires 2, 1" (25mm) diameter holes with a 7-7/8" (200mm) on-center spread. The spray and control valve require a 1-1/4" (32mm) diameter hole each. There is no required on-center spread for the control valve and spray.

SPOUT INSTALLATION:

1. Remove the SUPPLY NUTS, MOUNTING NUTS, METAL WASHERS and RUBBER WASHERS from the SPOUT. Do **NOT** remove the RUBBER WASHERS beneath the ESCUTCHEONS. See FIGURE -01.

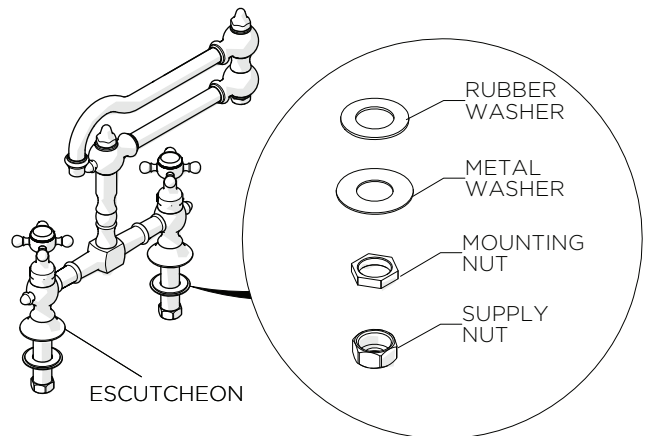


FIGURE - 01

These guidelines have been prepared for the professional contractor to aid in the installation of:
JULIA TWO HOLE BRIDGE ARTICULATED KITCHEN FAUCET WITH METAL CROSS HANDLES AND SPRAY (STYLE No. JUKM42), JULIA TWO HOLE BRIDGE ARTICULATED KITCHEN FAUCET WITH METAL LEVER HANDLE AND SPRAY (STYLE No. JUKM43).
 All dimensions are based on original specification and are subject to change and variation. Please consult your Design Associate for current specifications.

2. Insert the SHANKS through the 1" (25mm) diameter holes on the mounting surface. Make sure the RUBBER WASHERS are beneath the ESCUTCHEON.
3. Re-install the RUBBER WASHER, METAL WASHER and MOUNTING NUT on both SHANKS. Securely tighten the MOUNTING NUTS to secure the SPOUT to the mounting surface.

VALVE INSTALLATION:

➤ Refer to FIGURE - 02 for Steps 4 through 9.

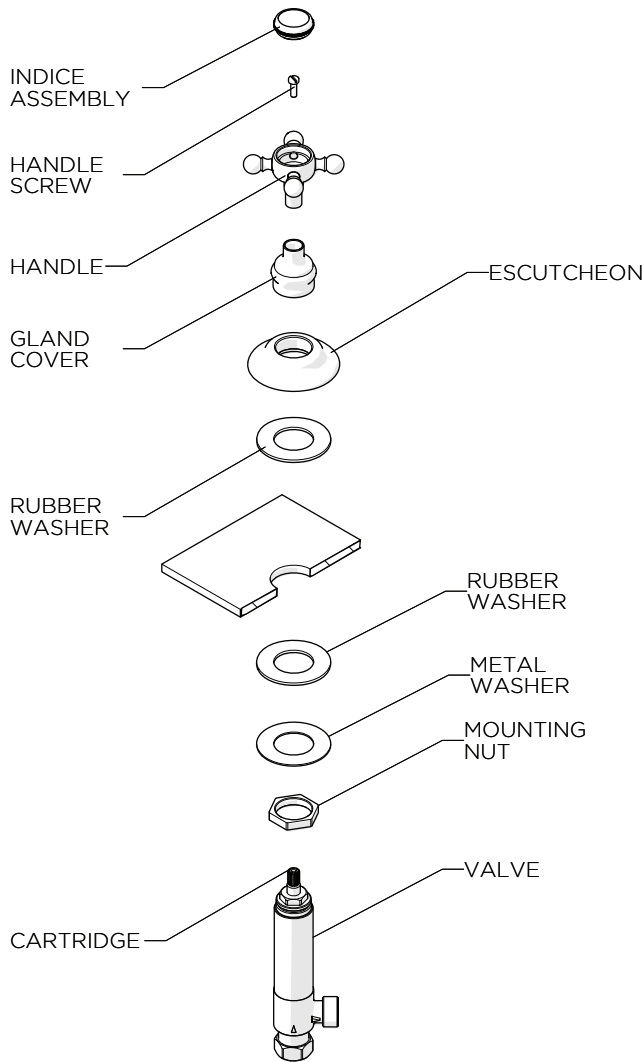


FIGURE - 02

4. Pull off the INDICE ASSEMBLY, unthread the HANDLE SCREW, pull off the HANDLE, unthread the GLAND COVER, unthread the ESCUTCHEON and remove the RUBBER WASHER beneath the ESCUTCHEON.
5. Insert the VALVE through the 1-1/4" (32mm) diameter hole on the mounting surface from underneath. Make sure the RUBBER WASHER, METAL WASHER and MOUNTING NUT are installed on the VALVE.

6. Thread the ESCUTCHEON back onto the VALVE making sure the RUBBER WASHER is beneath the ESCUTCHEON. Thread the ESCUTCHEON far enough down the VALVE to have a few threads from the VALVE exposed above the ESCUTCHEON.
7. Thread the GLAND COVER back onto the CARTRIDGE until it stops, then unthread the ESCUTCHEON until it contacts the GLAND COVER.
8. Unthread the MOUNTING NUT and securely tighten to secure the VALVE to the mounting surface.
9. Place the HANDLE back onto the CARTRIDGE and align accordingly then thread the HANDLE SCREW back into the CARTRIDGE. Securely tighten the HANDLE SCREW then insert the INDICE ASSEMBLY back into the HANDLE.

SPRAY INSTALLATION:

➤ Refer to FIGURE - 03 for Steps 10 through 12.

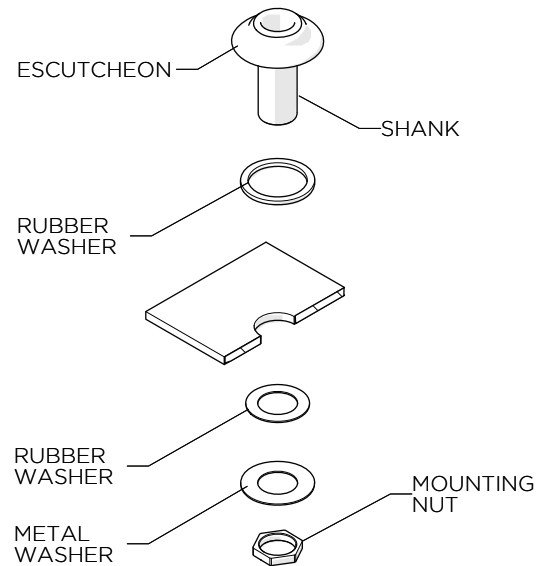


FIGURE - 03

10. Remove the MOUNTING NUT, METAL WASHER and RUBBER WASHER from the SHANK. Do **NOT** remove the RUBBER WASHER beneath the ESCUTCHEON.
11. Insert the SHANK through the 1-1/4" (32mm) diameter hole on the mounting surface then re-install the RUBBER WASHER, METAL WASHER and MOUNTING NUT. Make sure the RUBBER WASHER is beneath the ESCUTCHEON.
12. Securely tighten the MOUNTING NUT.
13. Connect the conical end of the HOSE to the SPRAY then insert the other end of the HOSE through the SHANK. Place the SPRAY into the SHANK.
14. Connect the HOSE to the VALVE using the ADAPTER and GASKETS provided.

These guidelines have been prepared for the professional contractor to aid in the installation of:
JULIA TWO HOLE BRIDGE ARTICULATED KITCHEN FAUCET WITH METAL CROSS HANDLES AND SPRAY
 (STYLE No. JUKM42), JULIA TWO HOLE BRIDGE ARTICULATED KITCHEN FAUCET WITH METAL LEVER
HANDLE AND SPRAY (STYLE No. JUKM43).
 All dimensions are based on original specification and are subject to change and variation.
 Please consult your Design Associate for current specifications.

FINISH AND INSPECT INSTALLATION:

15. Connect the SPOUT and VALVE to the water supplies using the SUPPLY NUTS provided.

NOTE: This product does not have an integrated diverter. Water cannot be diverted from the SPOUT to the SPRAY. The SPRAY requires its own water supply.

16. Unthread the AERATOR HOUSING and remove the AERATOR from the SPOUT, then open the inlet supplies and carefully turn both HANDLES on the SPOUT to flush out any debris in the supply lines.

17. Inspect all connections for leaks then re-install the AERATOR, making sure to include the O-RING.

18. Unthread the HOSE from the SPRAY, then open the inlet supply and carefully turn the HANDLE to flush out any debris in the supply line.

19. Inspect all connections for leaks then thread the HOSE back onto the SPRAY and place the SPRAY back into the SHANK.

SERVICING THE SHUT-OFF CARTRIDGE(S):

➤ Refer to FIGURE - 04 for Steps 1 through 2.

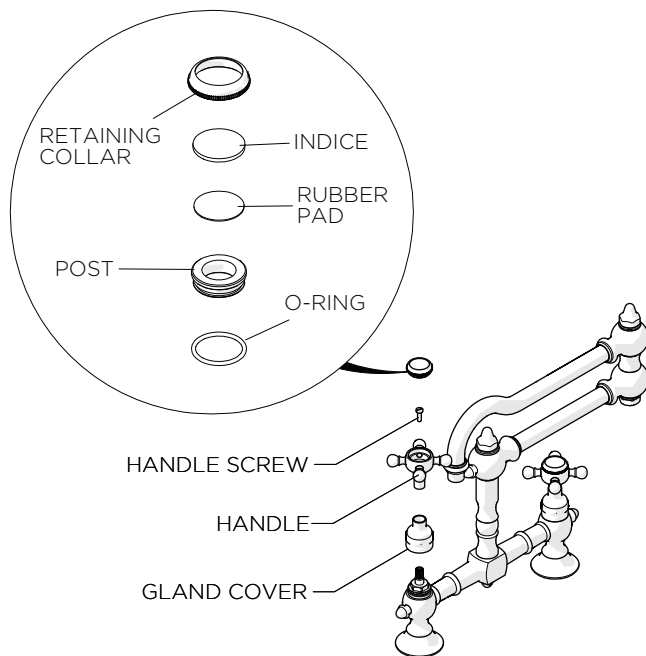


FIGURE - 04

1. Pull off the INDICE ASSEMBLY to expose the HANDLE SCREW. The INDICE ASSEMBLY will come off as one piece. It is held in place by an O-RING.

2. Unthread the HANDLE SCREW, pull off the HANDLE and unthread the GLAND COVER to expose the cartridge.

➤ If further assistance is required, please contact Product Support at 1-800-927-2120 Ext 2 Monday through Friday, 8am - 6pm EST.

* Putty contains oil and can cause permanent discoloration on certain materials such as marble, granite and any porous surface.

These guidelines have been prepared for the professional contractor to aid in the installation of:
JULIA TWO HOLE BRIDGE ARTICULATED KITCHEN FAUCET WITH METAL CROSS HANDLES AND SPRAY (STYLE No. JUKM42), JULIA TWO HOLE BRIDGE ARTICULATED KITCHEN FAUCET WITH METAL LEVER HANDLE AND SPRAY (STYLE No. JUKM43).
All dimensions are based on original specification and are subject to change and variation.
Please consult your Design Associate for current specifications.

W A T E R W O R K S