



ESTB. 1978

WATERWORKS

## Taurus2



### MEDITERRANEAN REFINEMENT

Extremely durable, these Italian porcelain tiles have a simple, relaxed beauty. In soft nuanced shades that attract light, they give any space a quiet gleam.



ESTB. 1978

# WATERWORKS

---

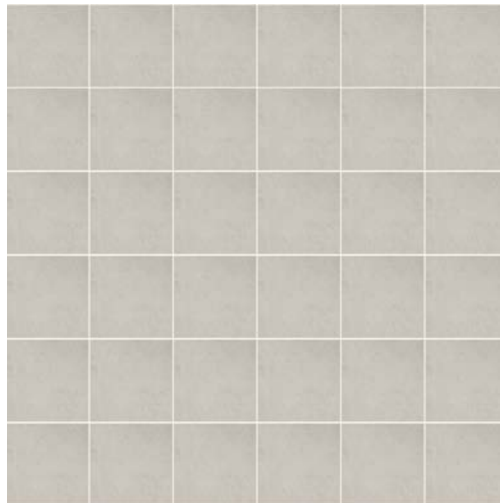
## Taurus2



11 3/4" x 23 1/2"  
Field Tile



23 1/2" x 23 1/2"  
Field Tile



1 7/8" Stacked Mosaic



ESTB. 1978

# WATERWORKS

---

## Taurus2

### PALETTE



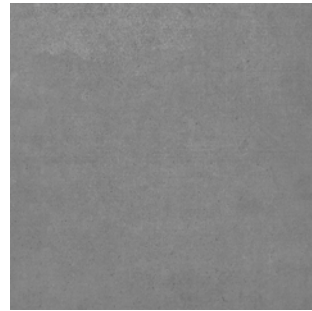
Putty Matte

V2



Gray Smoke Matte

V2



Ash Matte

V2

\* 29 unique 23 3/8" x 23 3/8" tiles and 58 unique 11 11/16" x 23 3/8" tiles to create a natural look.  
Tiles are randomly packed and cannot be hand selected.

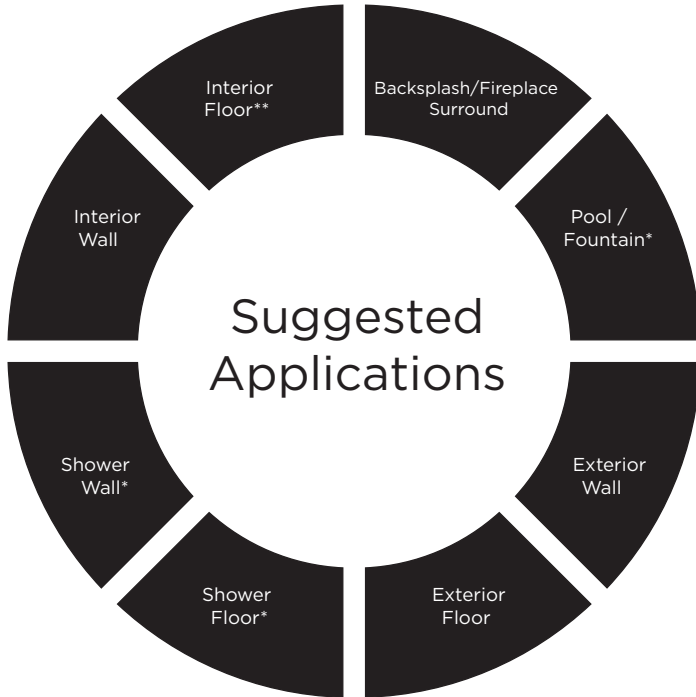
<sup>A</sup> See variation chart



ESTB. 1978

# WATERWORKS

## Taurus2



### Variation Level

V1	V2	V3	V4	V5

1. MINIMAL, IF ANY COLOR VARIATION
2. SLIGHT COLOR VARIATION CAN BE EXPECTED
3. A MEDIUM RANGE OF COLOR VARIATION IS TYPICAL; DARKER AND LIGHTER TONES ARE EVIDENT
4. CONSIDERABLE COLOR VARIATION IS TYPICAL; FROM DARKS TO LIGHTS AND SOME TONE CHANGES
5. EXTREME COLOR VARIATION CAN BE EXPECTED - THE RANGE IS OFTEN DIFFERING BUT COMPLEMENTARY

● Recommended Use      ○ Not Recommended Use

### Application Notes

- \* Suitable for use in wet environments, including steam showers, if properly installed, sealed, and maintained
- \*\* For commercial applications, please inquire.

### Thickness

$3/8''^*$

\*Nominal:  $\pm 1/8''$

### Suggested Grout Lines

$1/16'' - 1/8''$

### Installation / Maintenance

- WATERWORKS ASSUMES NO RESPONSIBILITY FOR INSTALLATION
- Installation constitutes acceptance.
- Tile should be installed by a licensed and experienced tile setter.
- Refer to TCNA (Tile Council of North America) or ANSI standards for installation guidelines.
- All tile must be inspected PRIOR to installation.
- Dry lay tile prior to installation to allow for blending of color variation.
- Waterworks recommends a grouted test panel prior to installation to understand final appearance of grouted material.
- Seal grout after installation and maintain regularly.