

## SIMONA

SALT02

Simona Wall Mounted Single Sconce with Triple Murano Glass Diffusers



SHOWN IN SIMONA WALL MOUNTED SINGLE SCONCE WITH TRIPLE MURANO GLASS DIFFUSERS | SALT02

### TECHNICAL DETAILS

Ambient Task: Ambient  
 Depth/Width: 5 1/4"  
 Height: 18 1/2"  
 Installation Type: Wall Mounted  
 Interior Exterior Application: Interior Only  
 Length: 8 3/4"  
 Light Direction: Omnidirectional from wall surface  
 Orientation: Vertical or Horizontal  
 Primary Material: Brass/Murano Glass  
 Safety Warnings: Do not exceed max wattage.  
 Shade Finish: Clear  
 Shade Material: Glass  
 Shade Shape: Rectangular  
 Voltage: 120  
 Wet/Dry: Damp or Dry

### INSPIRATION

Our Simona collection is handmade in Italy from strikingly thick slabs of gleaming Murano glass, each rich in naturally occurring undulations and surface movement for dramatic visual impact. Each fixture is generously scaled to provide both soft illumination and sculptural presence.

### CODES & STANDARDS

### PRODUCT FEATURES

- Proprietary design
- Available in Brass or Nickel with Murano Glass Diffusers
- Handcrafted in Italy
- Dimmable integrated LED fixture - 50,000 hours of life
- Variation is to be expected from light to light

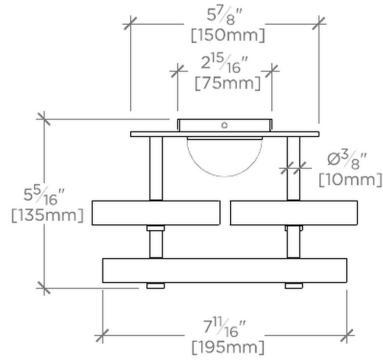
### CERTIFICATIONS

### PRODUCT (NOTES)

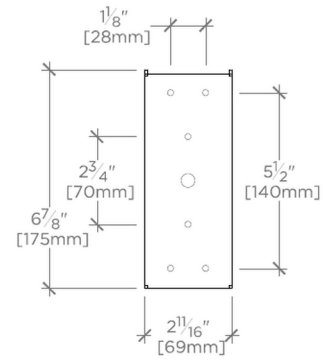
## SIMONA

Simona Wall Mounted Single Sconce with Triple Murano Glass Diffusers

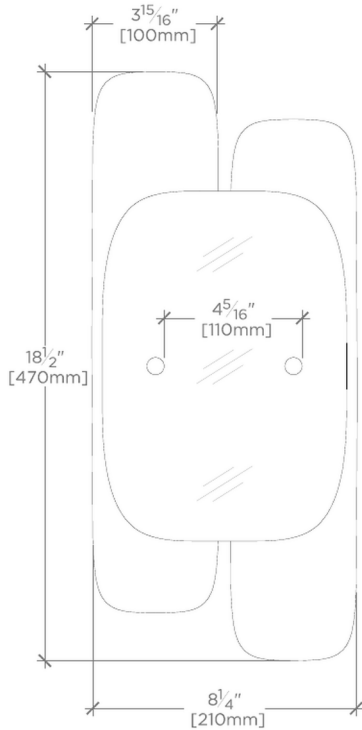
SALT02



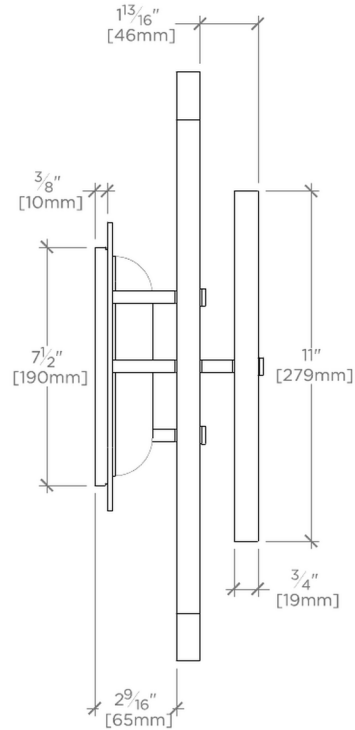
TOP VIEW SCALE: 2"=1'-0"



MOUNTING PLATE SCALE: 2"=1'-0"



FRONT VIEW SCALE: 2"=1'-0"



SIDE VIEW SCALE: 2"=1'-0"