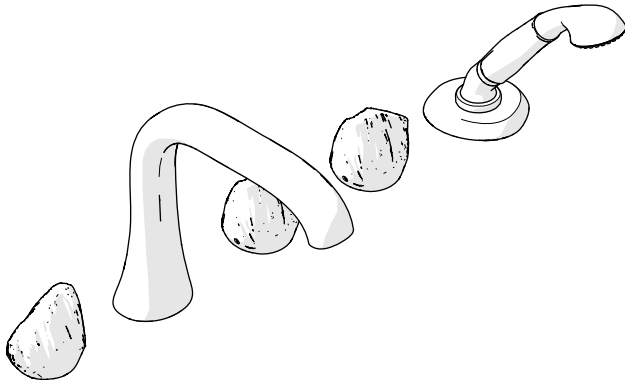
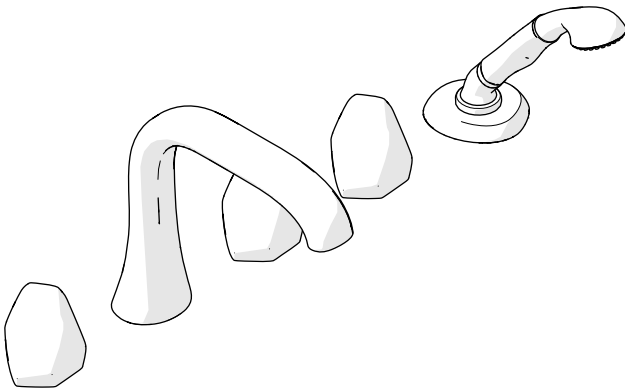


STYLE No. ISTF01[†]
With Handshower and Metal Petra Handles



STYLE No. ISTF05[†]
With Handshower and Metal Petra Handles



SPECIFICATIONS:

Deck Thickness Maximum: 2" [51mm]
Handle Spread Maximum: 12" [305mm]
Handle Spread Minimum: 10" [254mm]
Handshower Hose Length: 79" [2m]
Fittings Hole Diameter (Handshower): Ø1-3/8" [35mm]
Fittings Hole Diameter (Spout and Handles): Ø1-1/4" [32mm]
Inlet Connection: 1/2" Female NPT[†]
Integrated Diverter: No
Restricted Maximum Flow Rate: 2.5gpm [9.5L/min]
Spout Reach: 8-3/16" [208mm]
Spout Swivel: N
Water Pressure Maximum: 85psi [6.0 bar]
Water Pressure Minimum: 20psi [1.5 bar]
Water Pressure Recommended: 45psi [3.0 bar]

[†] UK Style No. **IS01TF** and **IS05TF** are supplied with 2 **BSP** adapters, assembly required.

IMPORTANT:

- To ensure this product is installed properly, you must read and follow these guidelines.
- The owner/user of this product must keep this information for future reference.

- Product should be on-site prior to rough-in. This allows the installer to visualize the installation and verify and center spread.
- This product must be installed by a professional licensed contractor.
- Be sure your installation conforms to federal, state, and local codes. Anti-scald protection is the responsibility of the installer and according to applicable codes. In the State of Massachusetts, all installations must comply with the rules and regulations set forth within 248 CMR.
- Refer to the specification and assembly drawings attached. Product is sold partially assembled but shown fully disassembled for illustrative and service purposes only.
- Check tub deck and tub measurements to assure the spout projects far enough into the tub.
- Inspect this product to ensure you have all the parts required for proper installation.
- Use only a strap wrench or protected/smooth-jaw wrench on any finished surface.
- For proper installation, the deck surface should be installed prior to mounting this product.
- The use of certain plumber's putty may stain stone or tile surfaces.
- **An access panel is required for future servicing.**
- Install accessible hot and cold service stop valves to facilitate servicing.
- Run 3/4" supply lines for maximum flow.

SPOUT INSTALLATION:

- See Figure -01 for Steps 1 - 4.
1. Using a 14mm HEX KEY, remove the 3/4" NPT ADAPTER and its RUBBER WASHER then remove the mounting NUT and WASHERS from the SPOUT.
 2. Insert that SPOUT through the hole on the mounting surface making sure the RUBBER WASHER is underneath the SPOUT.
 3. Re-install the RUBBER WASHER, PLASTIC WASHER, METAL WASHER and NUT as shown. Securely tighten the NUT using a 23mm wrench.
 4. Thread the 3/4" NPT ADAPTER back onto the spout making to include the RUBBER WASHER. Securely tighten the ADAPTER using a 14mm HEX KEY.

These guidelines have been prepared for the professional contractor to aid in the installation of:
ISLA DECK MOUNTED HIGH PROFILE CONCEALED TUB FILLER WITH HANDSHOWER AND METAL PETRA HANDLES (STYLE No. ISTF01/IS01TF) AND ISLA DECK MOUNTED HIGH PROFILE CONCEALED TUB FILLER WITH HANDSHOWER AND METAL GEODE HANDLES (STYLE No. ISTF05/IS05TF).
All dimensions are based on original specification and are subject to change and variation.
Please consult your Design Associate for current specifications.

W A T E R W O R K S

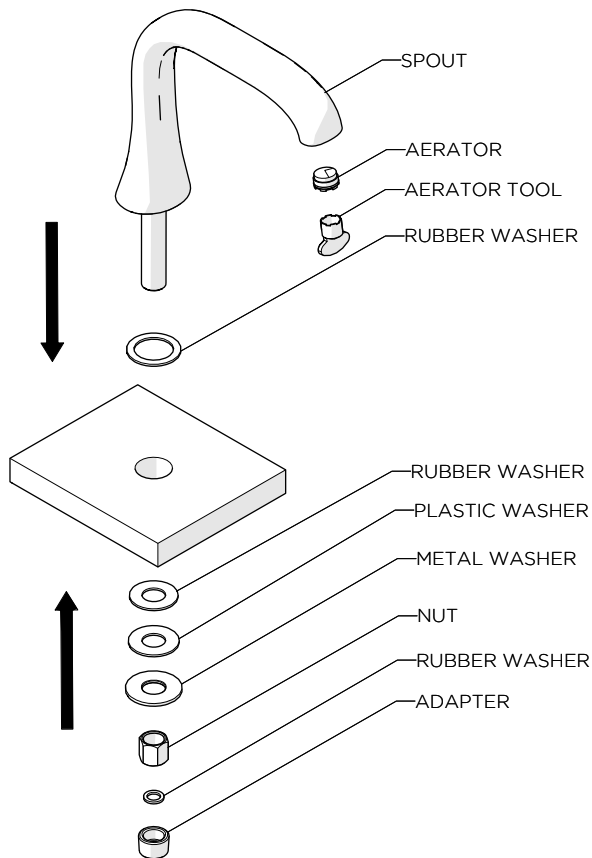


FIGURE - 01

HOT AND COLD HANDLE INSTALLATION:

- See Figure - 02 for Steps 5 - 17.
- **NOTE:** Each VALVE BODY is identified with either a RED for hot or BLUE for cold marking.
- 5. Loosen the SET SCREW on the HANDLE using a 2.5mm hex key and remove the HANDLE.
- 6. Loosen the SCREW inside the HANDLE STEM to remove the ALIGNMENT COLLAR and STEM together.
- 7. Unthread and remove the TRIM CONNECTOR.
- 8. Thread the NUT all the way down the VALVE BODY then slide the WASHERS and PLASTIC SPACER down.
- 9. Insert the VALVE BODY into the hole on the mounting surface from beneath and then thread the TRIM CONNECTOR onto the VALVE BODY until it is fully seated. Make sure the RUBBER GASKET is beneath the TRIM CONNECTOR
- 10. Thread and securely tighten the NUT using a 30mm wrench.
- 11. Place the HANDLE STEM onto the CARTRIDGE STEM making sure the O-RING is securely attached to the STEM.

- 12. Thread and securely tighten the SCREW making sure to use the LOCK WASHER.
- 13. Ensure the ALIGNMENT COLLAR is securely attached to the HANDLE STEM.
- 14. **NOTE:** If the COLLAR is loose, loosen the SET SCREW using a 2.5 hex key, fully thread the COLLAR onto the STEM then securely tighten the SET SCREW.
- 15. Turn the COLLAR to ensure the VALVE BODY is off.
- Turn the HOT VALVE BODY clockwise to close and the COLD VALVE BODY counter-clockwise to close.
- 16. Place the HANDLE over the ALIGNMENT COLLAR in the desired orientation and securely tighten the SET SCREW using a 2.5mm hex key.
- 17. Repeat Steps 5 - 16 to install the second HANDLE.

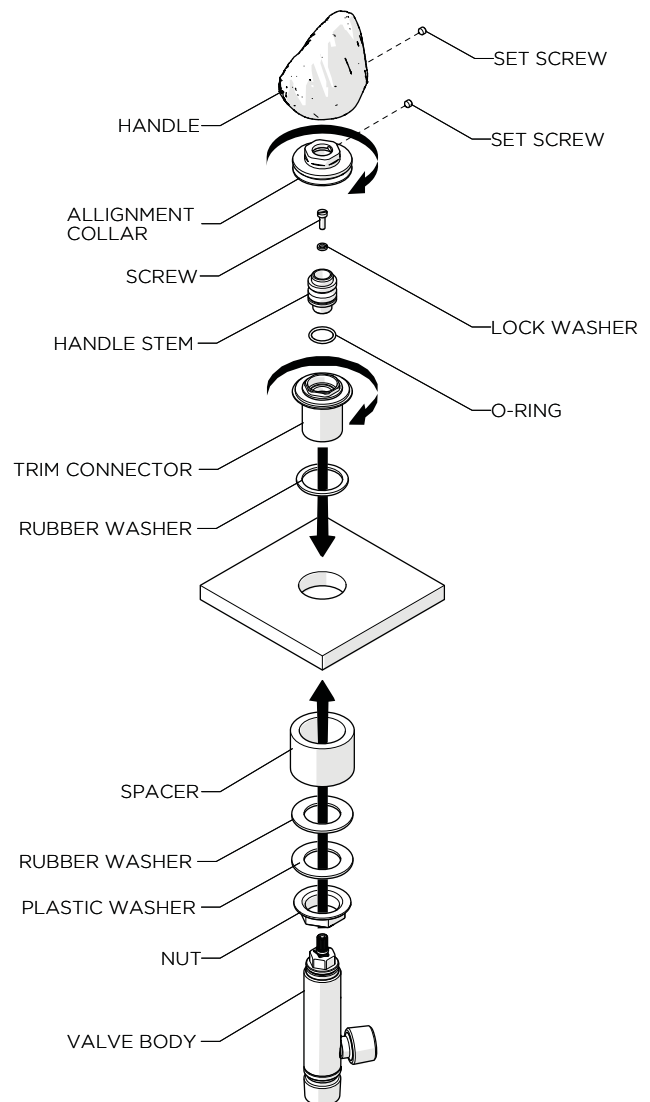


FIGURE - 02

These guidelines have been prepared for the professional contractor to aid in the installation of:
ISLA DECK MOUNTED HIGH PROFILE CONCEALED TUB FILLER WITH HANDSHOWER AND METAL PETRA HANDLES
(STYLE No. ISTF01/ISO1TF) AND ISLA DECK MOUNTED HIGH PROFILE CONCEALED TUB FILLER WITH HANDSHOWER
AND METAL GEODE HANDLES (STYLE No. ISTF05/ISO5TF).
All dimensions are based on original specification and are subject to change and variation.
Please consult your Design Associate for current specifications.

W A T E R W O R K S

DIVERTER HANDLE INSTALLATION:

- See Figure - 03 for Steps 16 - 24.

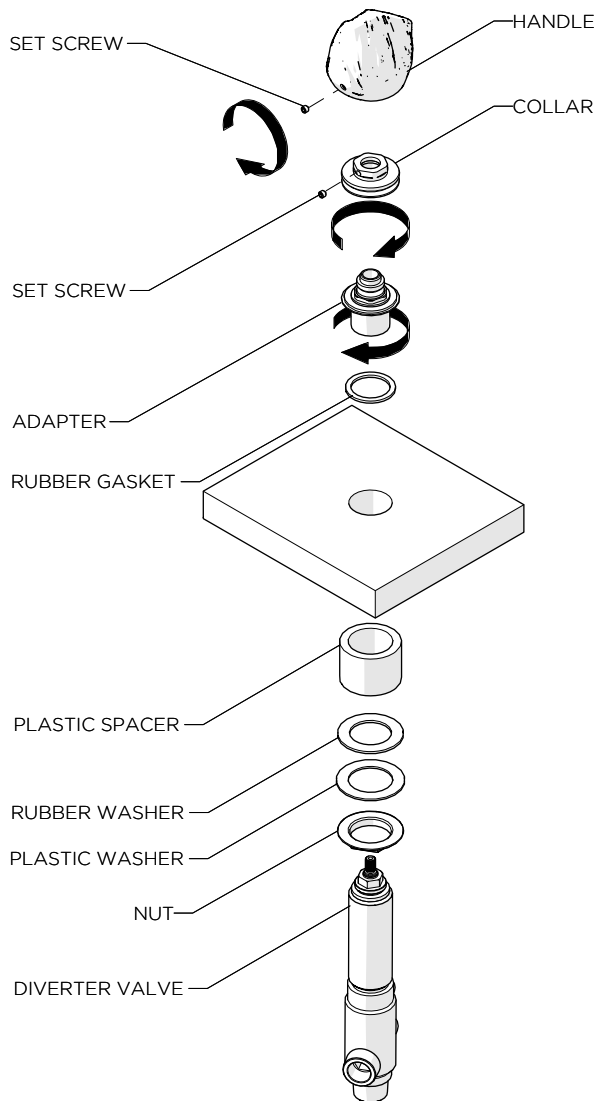


FIGURE - 03

18. Loosen the SET SCREW on the HANDLE using a 2.5mm HEX KEY and remove the HANDLE.
19. Loosen the SET SCREW on the COLLAR using a 2.5mm HEX KEY then unthread and remove the COLLAR.
20. Unthread and remove the ADAPTER.
21. Fully thread the NUT down the VALVE BODY and slide the WASHERS and PLASTIC SPACER down.
22. Insert the VALVE BODY into the mounting hole from beneath the mounting surface then thread the ADAPTER onto the VALVE BODY from above until fully seated. Make sure the RUBBER GASKET is beneath the ADAPTER.

23. Thread and securely tighten the NUT using a 36mm wrench.
24. Thread the COLLAR onto the ADAPTER until fully seated and securely tighten the SET SCREW using a 2.5mm HEX KEY.
25. Turn the COLLAR counter-clockwise to ensure the VALVE is turned to the SPOUT outlet position.
 - NOTE: To diverter water from the SPOUT to the HANDSHOWER, turn the VALVE clockwise.
26. Place the HANDLE over the COLLAR in the desired orientation and securely tighten the SET SCREW using a 2.5mm HEX KEY.

HANDSHOWER INSTALLATION:

- See Figure - 04 and 05 for Steps 25 - 32.

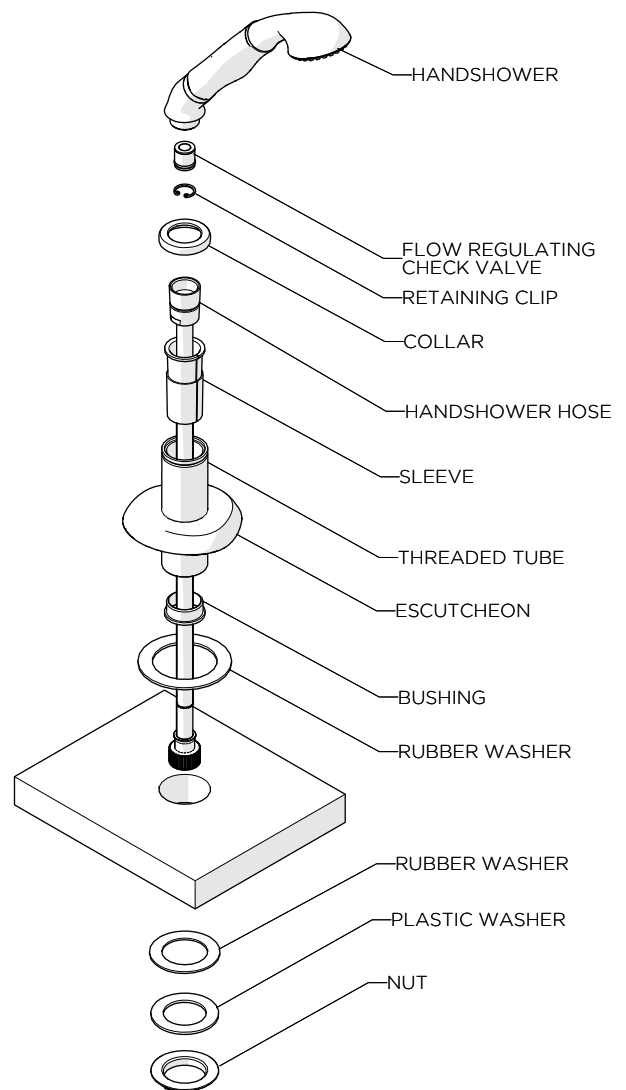


FIGURE - 04

These guidelines have been prepared for the professional contractor to aid in the installation of:
ISLA DECK MOUNTED HIGH PROFILE CONCEALED TUB FILLER WITH HANDSHOWER AND METAL PETRA HANDLES
(STYLE No. ISTF01/ISO1TF) AND ISLA DECK MOUNTED HIGH PROFILE CONCEALED TUB FILLER WITH HANDSHOWER
AND METAL GEODE HANDLES (STYLE No. ISTF05/ISO5TF).
All dimensions are based on original specification and are subject to change and variation.
Please consult your Design Associate for current specifications.

W A T E R W O R K S

27. Remove the mounting NUT and WASHERS from the THREADED TUBE and unthread the ESCUTCHEON to exposed 1/4" of threads.
28. Unthread the COLLAR and remove the SLEEVE.
29. Insert the THREADED TUBE through the mounting surface making sure the RUBBER WASHER is beneath the ESCUTCHEON.
30. Re-attach the WASHERS and NUT to the THREADED TUBE.
31. Slide the COLLAR over the conical end of the HOSE and insert the HOSE into the SLEEVE.
32. Pass the knurled end of HOSE through the THREADED TUBE until the SLEEVE is fully seated inside the TUBE then thread the COLLAR back onto the TUB.
33. Thread the ESCUTCHEON up until it touches the COLLAR then fully tighten the NUT to secure the assembly to the mounting surface.
34. Connect the conical end of the HOSE to the HANDSHOWER.

➤ NOTE: A FLOW REGULATING CHECK VALVE is located in the inlet of the HANDSHOWER.

HOSE CONNECTIONS:

35. The DIVERter VALVE has 2 INLET ports, 1 SPOUT OUTLET port and 1 HANDSHOWER OUTLET port as shown in Figure - 05 below.

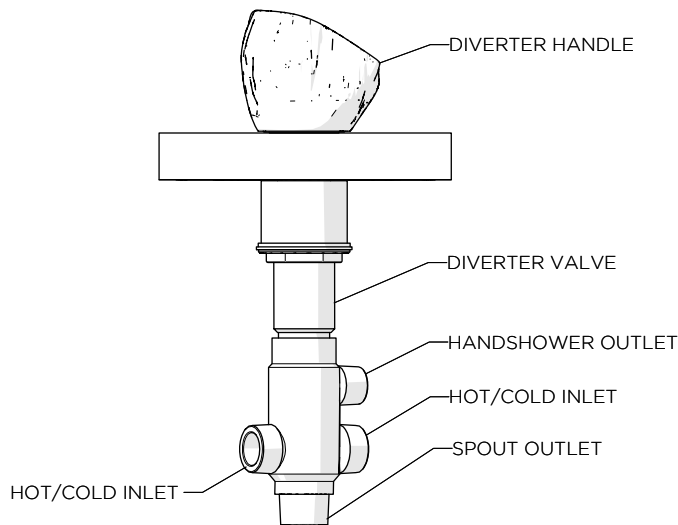


FIGURE - 05

➤ See Figure -06 for Steps 34 - 37.

36. Connect a HOSE to both INLET ports on the DIVERter VALVE then connect 1 HOSE to the HOT VALVE BODY and the other to the COLD VALVE BODY.

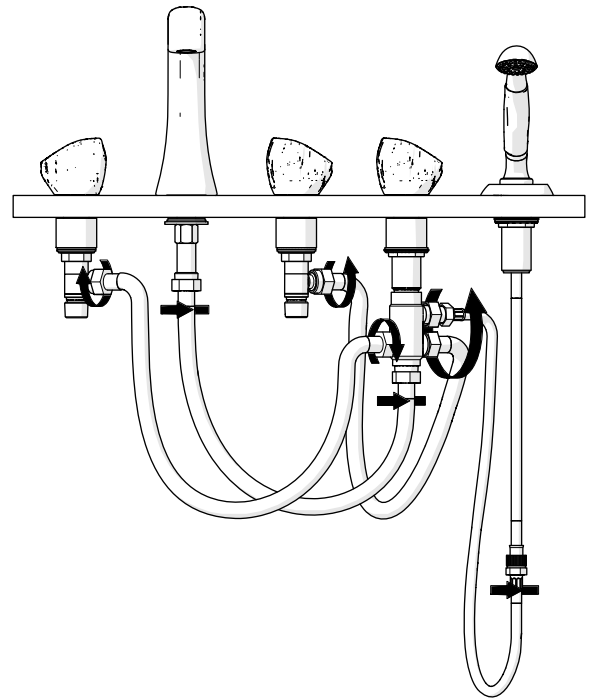


FIGURE - 06

37. Connect a HOSE to the SPOUT OUTLET on the bottom of the DIVERter VALVE then connect the HOSE to the SPOUT.
38. Connect the HANDSHOWER HOSE to the 23 1/2" EXTENSION HOSE provided then connect the EXTENSION HOSE to the HANDSHOWER OUTLET on the DIVERter VALVE.
39. Make sure the HOSES are not pinched/kinked and securely tighten all connections.

INSPECT AND FINISH THE INSTALLATION:

40. Connect the VALVE BODIES to the water supply lines.
41. Remove the AERATOR using the tool provided then turn on the HOT and COLD valves to flush out any debris in the supply lines before diverting to the HANDSHOWER.
42. Carefully inspect all connections for leaks and make sure all HANDLES are operating properly before enclosing the unit.
43. Re-install the aerator.
- If further assistance is required, please contact Product Support at 1-800-927-2120 (8am-6pm EST).
- Refer to the separate Service Parts Documents for available replacement parts.

These guidelines have been prepared for the professional contractor to aid in the installation of:
ISLA DECK MOUNTED HIGH PROFILE CONCEALED TUB FILLER WITH HANDSHOWER AND METAL PETRA HANDLES
(STYLE No. ISTF01/ISO1TF) AND ISLA DECK MOUNTED HIGH PROFILE CONCEALED TUB FILLER WITH HANDSHOWER
AND METAL GEODE HANDLES (STYLE No. ISTF05/ISO5TF).
All dimensions are based on original specification and are subject to change and variation.
Please consult your Design Associate for current specifications.

W A T E R W O R K S