

Emile

EEBT01

Emile 67" x 27" x 27 1/2" Freestanding Oval Cast Iron Bathtub



SHOWN IN EMILE 67" X 27" X 27 1/2" FREESTANDING OVAL CAST IRON BATHTUB | EEBT01

TECHNICAL DETAILS

ADA Compliance: No  
Adjustable Levelers Feet: Y  
Bathing Type: Bathing and Soaking  
Depth To Overflow: 319 mm  
Depth/Width: 686 mm  
Drain Hole Diameter: 52 mm  
Drain Style: Center Drain  
Height: 686 mm  
Installation Type: Freestanding  
Item Weight Filled: 413.675904 kg  
Length: 1710 mm  
Overflow Hole Diameter: 51 mm  
Overflow Opening: Yes  
Single Or Double Ended: Double Ended

INSPIRATION

Made with graceful vintage-inspired lines and sheathed in brass, this classic cast-iron bathtub lends a room a stunning focal point. Precise artistry and 5 days of hand-polishing enhance the old-world feel; left unfinished, the brass will take on a warm, lush patina.

CODES & STANDARDS

PRODUCT FEATURES

- Solid Brass wrapped cast iron tub
- Constructed of the finest cast iron with pure white enamel interior
- Available with optional slip resistant bottom, a built-in safety feature
- Waste and Overflow (UNWO76) sold separately
- Tub ships with protective wax coating on brass exterior

CERTIFICATIONS

Dimensions of fixtures are nominal. Measure your actual  
PRODUCT (NOTES)  
Installation of this product in a wet environment such as outdoors, steam rooms, or within showering stalls voids all Warranty.

Emile

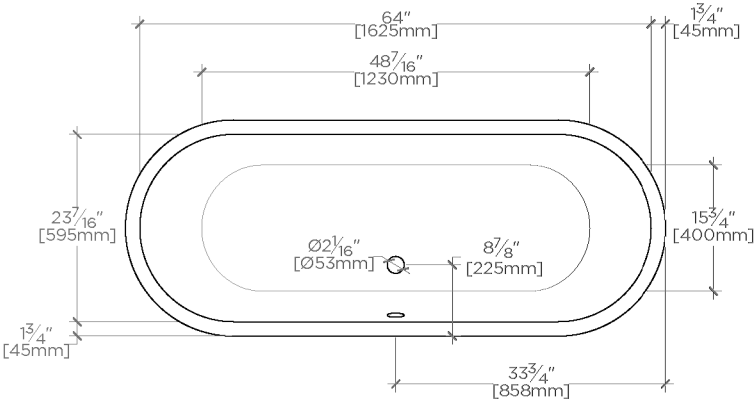
EEBT01

Emile 67" x 27" x 27 1/2" Freestanding Oval Cast Iron  
Bathtub

RECOMMENDED WASTE & OVERFLOW STYLE #:

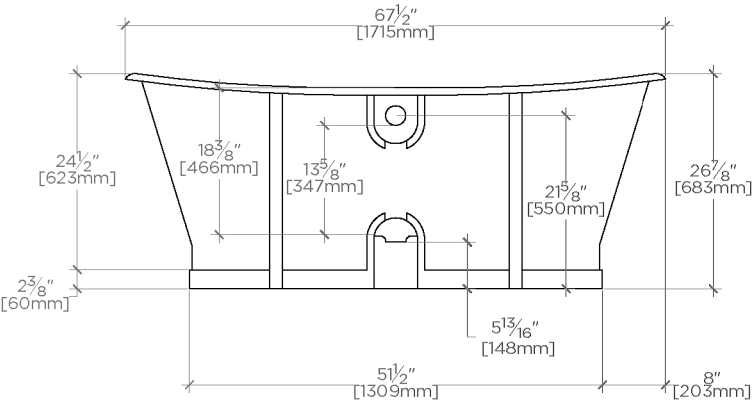
UNWO76 - UNIVERSAL DRAIN PLUG WASTE AND OVERFLOW DRAIN

Dimensional Tolerance	
> $7\frac{7}{8}"$ [200mm]	± 0.8%
< $7\frac{7}{8}"$ [200mm]	± 1.8%



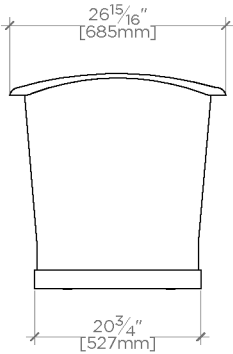
TOP VIEW

SCALE: 1/2"=1'-0"



SIDE VIEW

SCALE: 1/2"=1'-0"



END VIEW

SCALE: 1/2"=1'-0"