

## CARLO

CACP16

Carlo Deck Mounted Marble Lavatory Sink 30" x 22 3/4" x 6"  
with 30" x 8" x 3/4" Backsplash and Rounded Rectangular  
Pedestal 15" x 9" x 27"



SHOWN IN CARLO DECK MOUNTED MARBLE LAVATORY SINK 30" X 22 3/4" X 6" WITH 30" X 8" X 3/4" BACKSPLASH AND  
ROUNDED RECTANGULAR PEDESTAL 15" X 9" X 27" | CACP16

### TECHNICAL DETAILS

Depth To Overflow: 2.67"  
Drain Hole Depth: 1 7/8"  
Drain Hole Diameter: 1 3/4"  
Drain Style: Center Drain  
Fittings Hole Diameter: 1 3/8"  
Overflow Opening: Yes

### INSPIRATION

Carlo creates a nuanced transitional statement through material and movement. Its recessed deck appears to roll into the basin, creating a ribbon of stone that highlights the material's substantial thickness and weight. Radius corners and a waterfall backsplash complete the sculptural effect.

### CODES & STANDARDS

### PRODUCT FEATURES

Designed by and exclusive to Waterworks

Sourced and made in Italy

Carved from a solid block of stone. Packaged item weight: 416 lbs

Comes pre-cut for deck-mounted faucet and handles

Features an integrated overflow

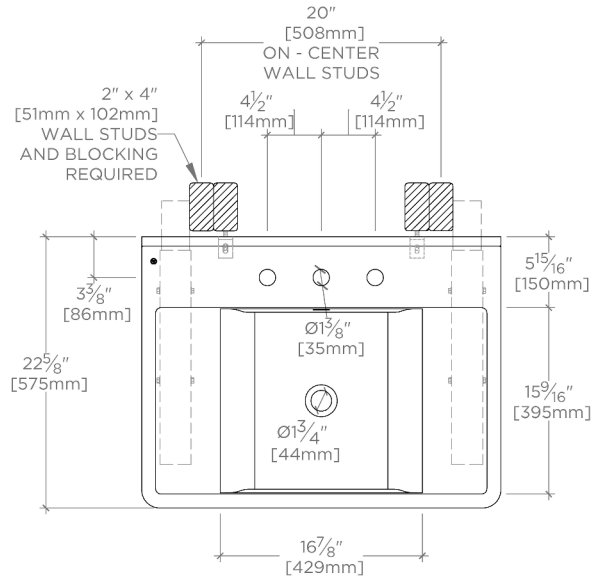
### CERTIFICATIONS

### PRODUCT (NOTES)

## CARLO

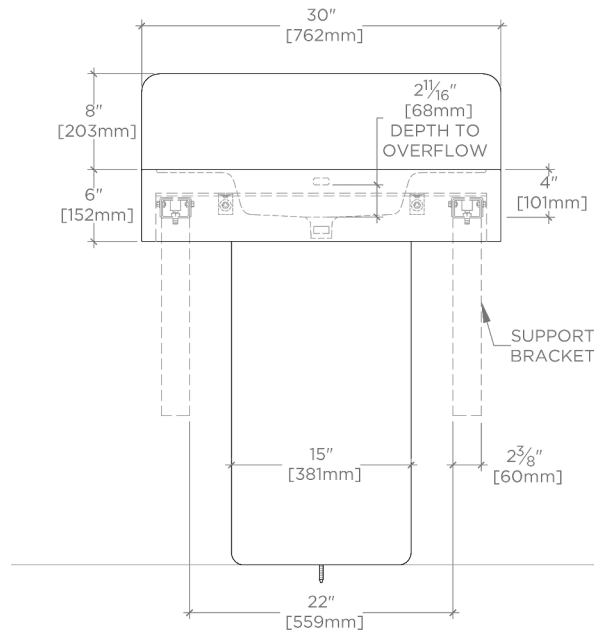
## CACP16

Carlo Deck Mounted Marble Lavatory Sink 30" x 22 3/4" x 6"  
with 30" x 8" x 3/4" Backsplash and Rounded Rectangular  
Pedestal 15" x 9" x 27"



TOP VIEW

SCALE: 3/4"=1'-0"



FRONT VIEW

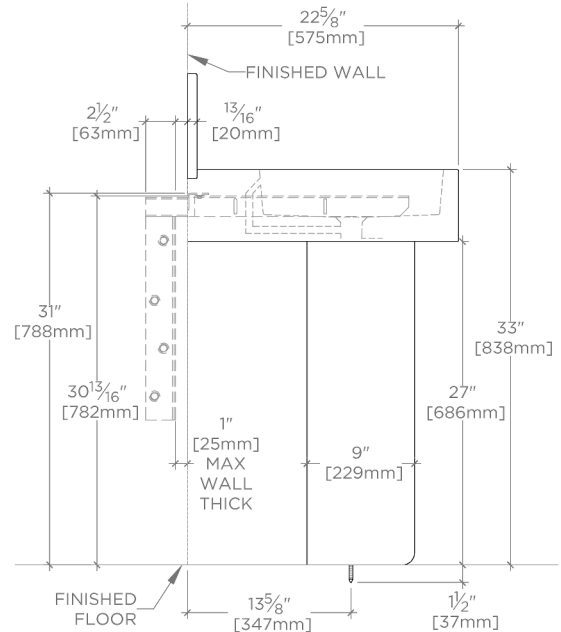
SCALE: 3/4"=1'-0"

REQUIRED MOUNTING HARDWARE (SOLD SEPARATELY)

STYLE: 106803

DESCRIPTION: UNIVERSAL PAIR (L/R) 22" STAINLESS STEEL  
ADJUSTABLE CONCEALED SUPPORT BRACKETS, WALL  
SUPPORT BRACKETS AND HARDWARE FOR WALL MOUNTED  
STONE SINK.

NOTE: THE SINK WILL BE SUPPORTED BY THE BRACKETS  
AND NOT THE PEDESTAL. ENSURE THE SINK IS NOT RESTING  
ON THE PEDESTAL TO AVOID DAMAGE.



SIDE VIEW

SCALE: 3/4"=1'-0"